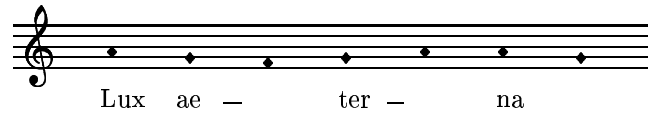


7. COMMUNIO

del Requiem a 4 voces (1583)

Transcripción: Felipe Pedrell

TOMÁS LUIS DE VICTORIA



Cantus

Altus

Tenor

Bassus

lu — ce — at e — is, Do —

lu — ce — at e — is, lu — ce — at e — is, Do —

lu — ce — at e — is, Do —

lu — ce — at e — is, lu — ce — at e — is, Do —

7

mi — ne. Cum San — ctis tu — is in

mi — ne. Cum San — ctis tu — is, cum San — ctis tu —

mi — ne. Cum San — ctis tu — is cum San — ctis tu — is in

mi — ne. Cum San — ctis tu — is, cum San — ctis tu — is, cum San — ctis tu —

13

ae — ter — num: qui — a pi — us es.

— is in ae — ter — num: qui — a pi — us es.

ae — ter — num: qui — a pi — us es.

— is in ae — ter — num: qui — a pi — us es.

Re-qui - em ae - ter - nam do - na e - is Do - mi - ne:

Cantus
et lux per - pe - tu - a lu - ce - at e -

Altus
et lux per - pe - tu - a lu - ce - at e - is, lu - ce - at e -

Tenor
8 et lux per - pe - tu - a lu - ce - at e - is, lu - ce - at

Bassus
et lux per - pe - tu - a lu - ce - at e - is, lu - ce - at e -

7
is: cum San - ctis tu - is in

is: cum San - ctis tu - is, cum San - ctis tu -

8 e - is: cum San - ctis tu - is, cum San - ctis tu - is in

- is: cum San - ctis tu - is, cum San - ctis tu - is, cum San - ctis tu -

13
ae - ter - num: qui - a pi - us es.

-is in ae - ter - num: qui - a pi - us es.

8 ae - ter - num: qui - a pi - us es.

-is in ae - ter - num: qui - a pi - us es.