

## Concerto à 4 Violini No. 1

## Violino 1

Georg Philipp Telemann (1681–1767)

TWV 40:201

Largo

4

13

20

27

32

37

*tr.*

**Allegro**

Musical score for Violino 1, Allegro section, measures 1-42. The score is written in treble clef with a key signature of one sharp (F#) and a common time signature (C). The tempo is marked 'Allegro'. The music consists of ten staves of notation. The first staff (measures 1-5) begins with a half note G4, followed by quarter notes A4, B4, and C5. The second staff (measures 6-9) continues with quarter notes D5, E5, F#5, and G5. The third staff (measures 10-13) features a series of eighth notes: G4, A4, B4, C5, D5, E5, F#5, G5. The fourth staff (measures 14-17) continues with quarter notes G4, A4, B4, and C5. The fifth staff (measures 18-21) features a series of eighth notes: D5, E5, F#5, G5, A5, B5, C6, D6. The sixth staff (measures 22-25) continues with quarter notes D5, E5, F#5, and G5. The seventh staff (measures 26-29) features a series of eighth notes: A5, B5, C6, D6, E6, F#6, G6, A6. The eighth staff (measures 30-33) continues with quarter notes A5, B5, C6, and D6. The ninth staff (measures 34-37) features a series of eighth notes: E6, F#6, G6, A6, B6, C7, D7, E7. The tenth staff (measures 38-41) continues with quarter notes E6, F#6, G6, and A6. The eleventh staff (measures 42-45) features a series of eighth notes: B6, C7, D7, E7, F#7, G7, A7, B7.

**Adagio**

Musical score for Violino 1, Adagio section, measures 46-50. The score is written in treble clef with a key signature of one sharp (F#) and a common time signature (C). The tempo is marked 'Adagio'. The music consists of one staff of notation. The first staff (measures 46-50) begins with a half note G4, followed by quarter notes A4, B4, and C5. The second staff (measures 51-55) continues with quarter notes D5, E5, F#5, and G5. The third staff (measures 56-60) features a series of eighth notes: A5, B5, C6, D6, E6, F#6, G6, A6. The fourth staff (measures 61-65) continues with quarter notes A5, B5, C6, and D6. The fifth staff (measures 66-70) features a series of eighth notes: E6, F#6, G6, A6, B6, C7, D7, E7. The sixth staff (measures 71-75) continues with quarter notes E6, F#6, G6, and A6. The seventh staff (measures 76-80) features a series of eighth notes: B6, C7, D7, E7, F#7, G7, A7, B7.

## Vivace

10

20

29

38

53

64

75

85

94

103

111

*p* *f*

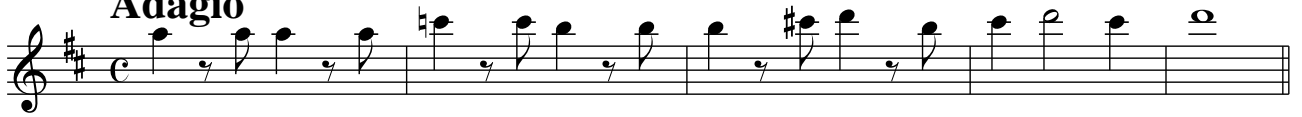
4 3 2

# Concerto à 4 Violini No. 2

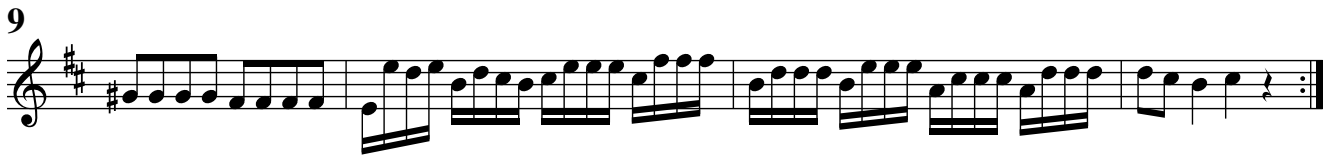
Georg Philipp Telemann (1681–1767)  
TWV 40:202

## Violino 1

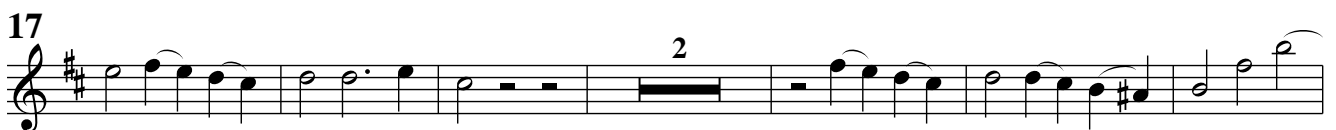
**Adagio**



**Allegro**



**Grave**



**Allegro**

4

8

12

15

18

21

25

28

32

35

39

## Concerto à 4 Violini No. 3

## Violino 1

Georg Philipp Telemann (1681–1767)  
TWV 40:203

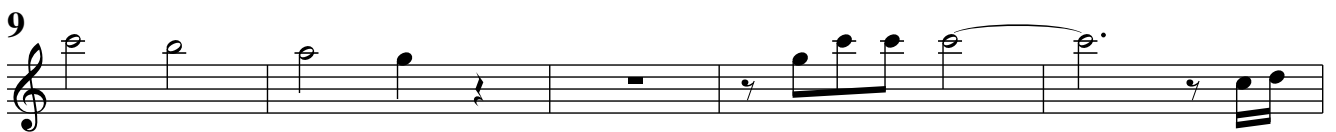
## Grave

Musical score for Violino 1, Grave section. The score is written in treble clef with a common time signature (C). It consists of three staves of music. The first staff begins with a treble clef and a common time signature. The second staff starts at measure 6. The third staff starts at measure 11 and includes dynamic markings: *p*, *pp*, and *ppp*.

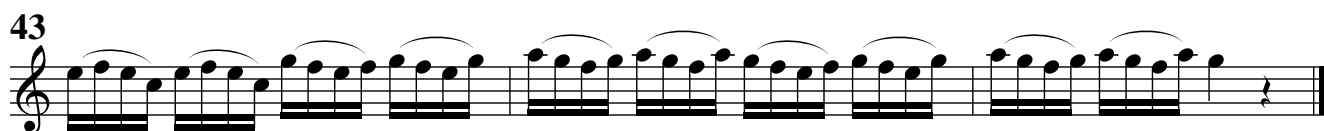
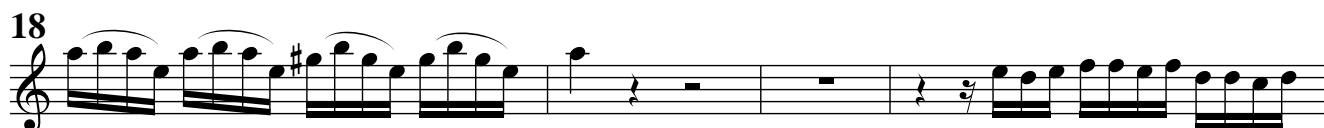
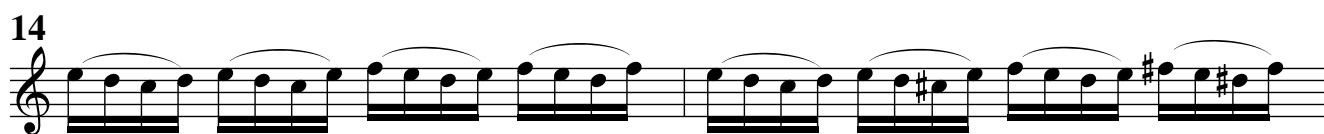
## Allegro

Musical score for Violino 1, Allegro section. The score is written in treble clef with a common time signature (C). It consists of six staves of music. The first staff begins with a treble clef and a common time signature. The second staff starts at measure 4. The third staff starts at measure 7. The fourth staff starts at measure 10. The fifth staff starts at measure 13. The music is characterized by rapid sixteenth-note patterns.



**Largo e staccato****Allegro**





# Concerto à 4 Violini No. 4

Georg Philipp Telemann (1681–1767)

TWV 40:204

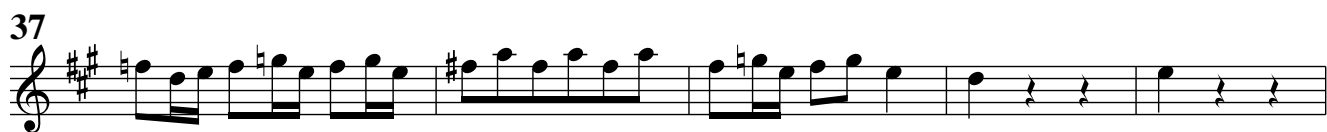
## Violino 1

### Grave

Musical score for Violino 1, Grave section. The score is written in treble clef, key signature of two sharps (F# and C#), and common time (C). It consists of four staves of music. The first staff begins with a treble clef, two sharps, and common time. The music is characterized by slow, sustained chords and intervals. The second staff starts at measure 8, the third at measure 15, and the fourth at measure 21. The piece concludes with a final chord in the fourth staff.

### Allegro

Musical score for Violino 1, Allegro section. The score is written in treble clef, key signature of two sharps (F# and C#), and 3/4 time. It consists of five staves of music. The first staff begins with a treble clef, two sharps, and 3/4 time. The music is characterized by a fast, rhythmic melody with eighth and sixteenth notes. The second staff starts at measure 7, the third at measure 13, the fourth at measure 19, and the fifth at measure 26. The piece concludes with a final chord in the fifth staff.



**Adagio**

Musical score for the Adagio section, measures 1 through 7. The music is in treble clef, key of D major (two sharps), and common time (C). Measure 1 starts with a whole rest, followed by a dotted quarter note G4, an eighth note A4, and a quarter note B4. Measures 2-7 continue with a melodic line of eighth and quarter notes, ending with a quarter rest in measure 7.

**Spirituoso**

Musical score for the Spiruoso section, measures 8 through 13. The music is in treble clef, key of D major (two sharps), and common time (C). Measure 8 begins with a forte (*f*) dynamic and features a complex rhythmic pattern of eighth and sixteenth notes. Measures 9-10 show dynamic fluctuations between *p* and *f*. Measure 11 features a *f* dynamic with a sixteenth-note triplet. Measure 12 has a *p* dynamic. Measure 13 concludes with a *f* dynamic and a quarter rest.

Violino 1 musical score, page 13, measures 16-49. The score is written in treble clef with a key signature of two sharps (F# and C#). The music features a variety of rhythmic patterns, including eighth and sixteenth notes, and rests. Dynamic markings are indicated by *p* (piano) and *f* (forte). The piece concludes with a double bar line at measure 49.

Measures 16-19: *p* *f* *p* *f*

Measures 20-22: *p* *f*

Measures 23-24: *p*

Measures 25-27: *f* *p* *p*

Measures 28-30: *f*

Measures 31-34: *p* *f*

Measures 35-39: *p* *f* *p* *f*

Measures 40-43: *p* *f* *p* *f*

Measures 44-48: *p* *f* *p* *f*

Measures 49: *p* *f*