

Confitebor a 2. Voci, Con Stru.

Contra Basso.

Andantino.

Handwritten musical score for 'Confitebor a 2. Voci, Con Stru.' featuring a Contrabass part. The score consists of 13 staves of music in G major, 3/4 time, marked 'Andantino'. The music is written in a single system with a key signature of one sharp (F#) and a common time signature (C). The notation includes various note values (quarter, eighth, and sixteenth notes), rests, and dynamic markings such as 'p' (piano) and 'f' (forte). The piece concludes with a double bar line and the word 'Fine' written in a decorative, cursive style.

Largo E_b f ^{*no*}

Andantino E_b $\frac{3}{4}$ ^{*no*}

Handwritten musical notation on a single staff. It begins with a treble clef and a common time signature. The melody consists of eighth and sixteenth notes. There are handwritten annotations above the staff: "for" with an upward-pointing arrow, and "b" with a flat symbol.

Handwritten musical notation on a single staff. It begins with a treble clef and a common time signature. The melody consists of eighth and sixteenth notes. There is a handwritten annotation "p^o" at the beginning and a "b" with a flat symbol later in the staff.

Handwritten musical notation on a single staff. It begins with a treble clef and a common time signature. The melody consists of eighth and sixteenth notes with some slurs.

Handwritten musical notation on a single staff. It begins with a treble clef and a common time signature. The melody consists of eighth and sixteenth notes. There is a handwritten annotation "1" above the staff.

Handwritten musical notation on a single staff. It begins with a treble clef and a common time signature. The melody consists of eighth and sixteenth notes. There is a handwritten annotation "for" above the staff.

Handwritten musical notation on a single staff. It begins with a treble clef and a common time signature. The melody consists of eighth and sixteenth notes. There is a handwritten annotation "2." above the staff.

Handwritten musical notation on a single staff. It begins with a treble clef and a common time signature. The melody consists of eighth and sixteenth notes, ending with a double bar line and some scribbles.

Handwritten musical notation on a single staff. It begins with a treble clef and a common time signature. The melody consists of quarter notes. The word "Adagio" is written at the beginning.

Handwritten musical notation on a single staff. It begins with a treble clef and a common time signature. The melody consists of quarter notes.

Handwritten musical notation on a single staff. It begins with a treble clef and a common time signature. The melody consists of quarter notes. There is a handwritten annotation "b" with a flat symbol above the first note.

Handwritten musical notation on a single staff. It begins with a treble clef and a common time signature. The melody consists of quarter notes. There is a handwritten annotation "1" above the staff.

Handwritten musical notation on a single staff. It begins with a treble clef and a common time signature. The melody consists of quarter notes. The staff ends with some scribbles.

Andantino || E_b 2/4 ¹³ | | | | | | | |

E_b | | | | | | | |

E_b | | | | | | | |

E_b | | | | | | | |

E_b | | | | | | | |

E_b | | | | | | | |

Gloria
Largo || E_b ^{stan} | | | | | | | |

E_b | | | | | | | |

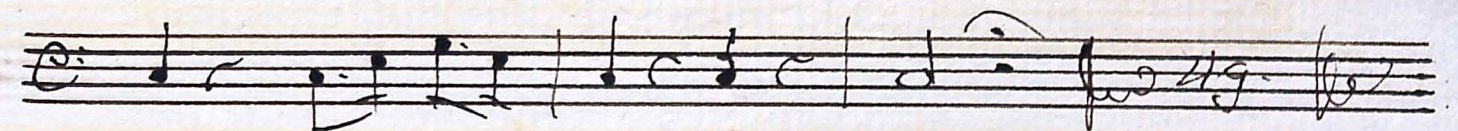
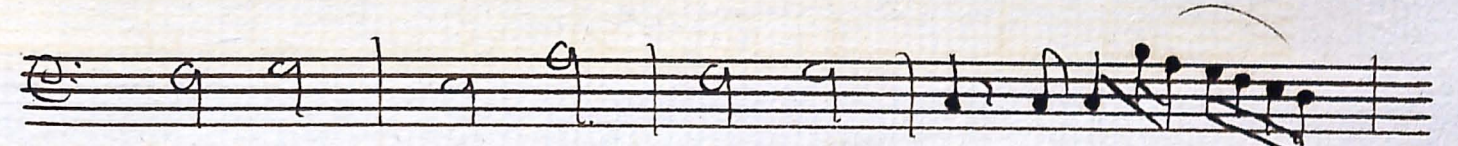
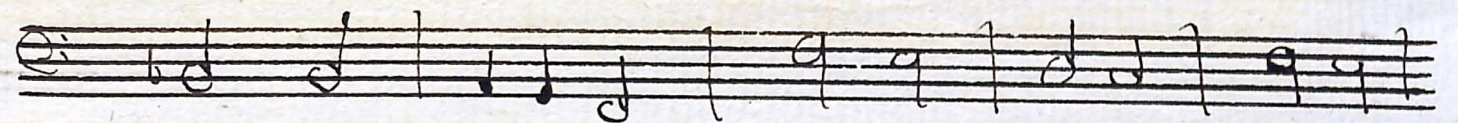
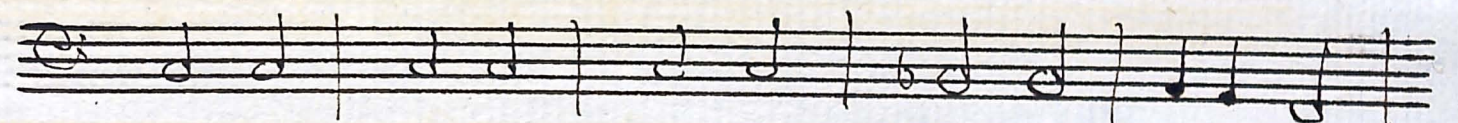
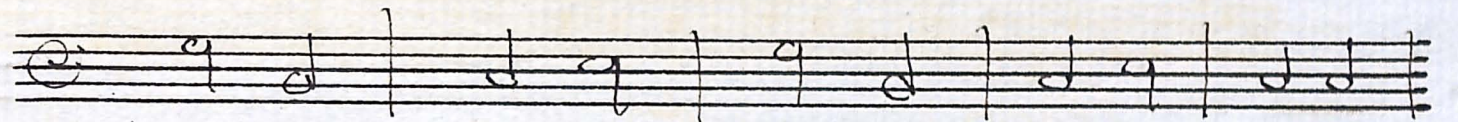
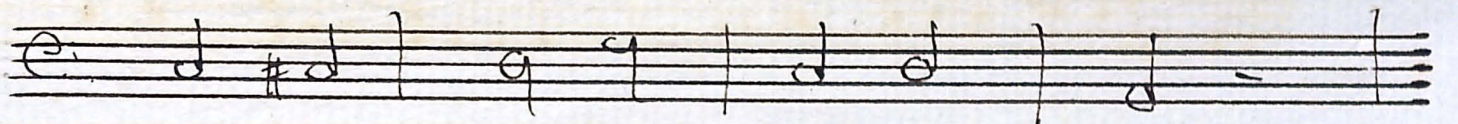
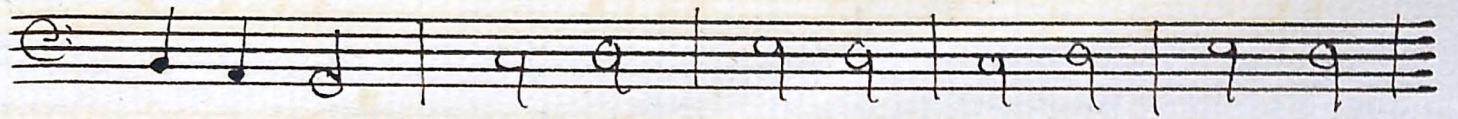
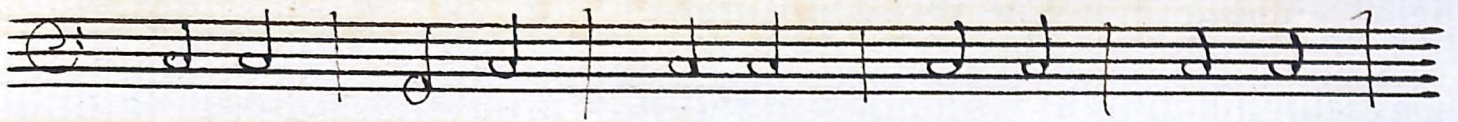
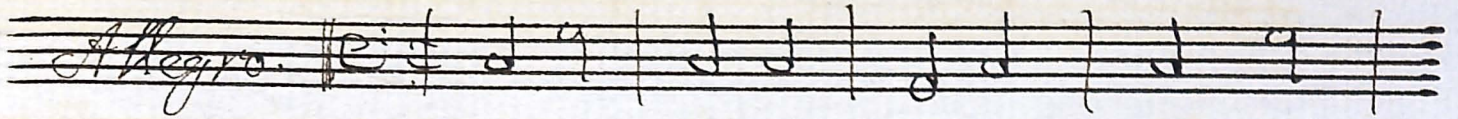
E_b | | | | | | | |

E_b | | | | | | | |

E_b | | | | | | | |

E_b | | | | | | | |

Sicut erat.



Sanctus Deus