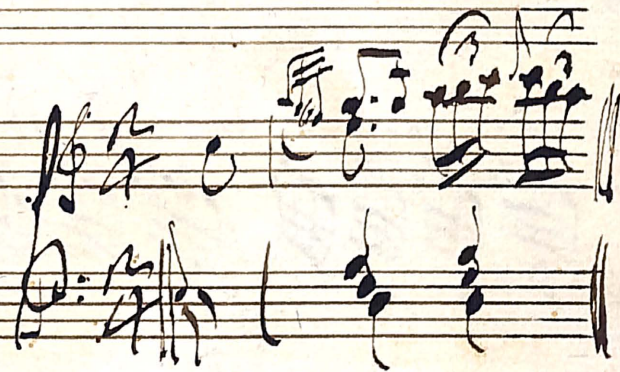


Sonata

Per Cimbalo

Del Sig.^{re} Gaspero Borjio



Andante

This image shows a handwritten musical score for guitar, consisting of six systems of two staves each. The tempo is marked as *Andante*. The notation is dense and includes various musical symbols such as notes, rests, and dynamic markings. The first system begins with a treble clef and a common time signature. The subsequent systems continue the piece with complex rhythmic patterns and melodic lines. The handwriting is fluid and characteristic of a composer's draft.

This image shows a page of handwritten musical notation, likely a score for a multi-instrument ensemble. The page is filled with several systems of staves, each containing multiple lines of music. The notation is dense and complex, featuring a variety of note values, rests, and articulation marks. The handwriting is in black ink on aged, slightly yellowed paper. There are several instances of the number '55' written in the left margin, possibly indicating measure numbers or section markers. The overall appearance is that of a working draft or a composer's sketch.

Handwritten musical notation on two staves. The top staff features a complex melodic line with many sixteenth and thirty-second notes, including some beamed triplets. The bottom staff provides a harmonic accompaniment with chords and moving lines.

Handwritten musical notation on two staves. The top staff continues the melodic development with various rhythmic patterns and rests. The bottom staff shows a steady accompaniment with frequent chord changes.

Handwritten musical notation on two staves. The top staff has a more active melodic line with many slurs and ties. The bottom staff continues the accompaniment with consistent rhythmic patterns.

Handwritten musical notation on two staves. The top staff features a series of rhythmic patterns, possibly representing a specific texture or instrument. The bottom staff has a more melodic line with some rests.

Handwritten musical notation on two staves. The top staff continues the rhythmic patterns from the previous system. The bottom staff has a melodic line with some rests and ties.

A handwritten musical score consisting of ten staves. The notation is dense and complex, featuring a variety of rhythmic patterns and melodic lines. The first staff shows a melodic line with eighth and sixteenth notes. The second staff contains a more rhythmic line with many beamed notes. The third and fourth staves are filled with intricate, fast-moving passages, likely for a keyboard instrument. The fifth and sixth staves continue with similar complex textures. The seventh and eighth staves show a mix of melodic and rhythmic elements. The ninth and tenth staves conclude the piece with a final cadence, indicated by a double bar line and repeat signs.

Minuè

A handwritten musical score for a piece titled "Minuè". The score is written on ten staves, organized into five systems of two staves each. The notation is in a cursive, handwritten style. The first staff begins with a treble clef and a 3/4 time signature. The music consists of a variety of notes, including quarter, eighth, and sixteenth notes, as well as rests and dynamic markings. The piece concludes with a double bar line and a repeat sign on the final staff.

A handwritten musical score consisting of ten staves. The notation is dense and complex, featuring a variety of rhythmic values, including eighth and sixteenth notes, and rests. The music is written in a style that suggests a historical or experimental context, possibly a form of early modern lute tablature or a similar system. The staves are connected by a continuous line on the left side. The paper shows signs of age, with some yellowing and minor stains. The overall appearance is that of a working draft or a composer's sketch.