

Schraner No: II.  
2. Fach 4. b. Lage.

No: 1. Solo.

co Violino e  
Basso.

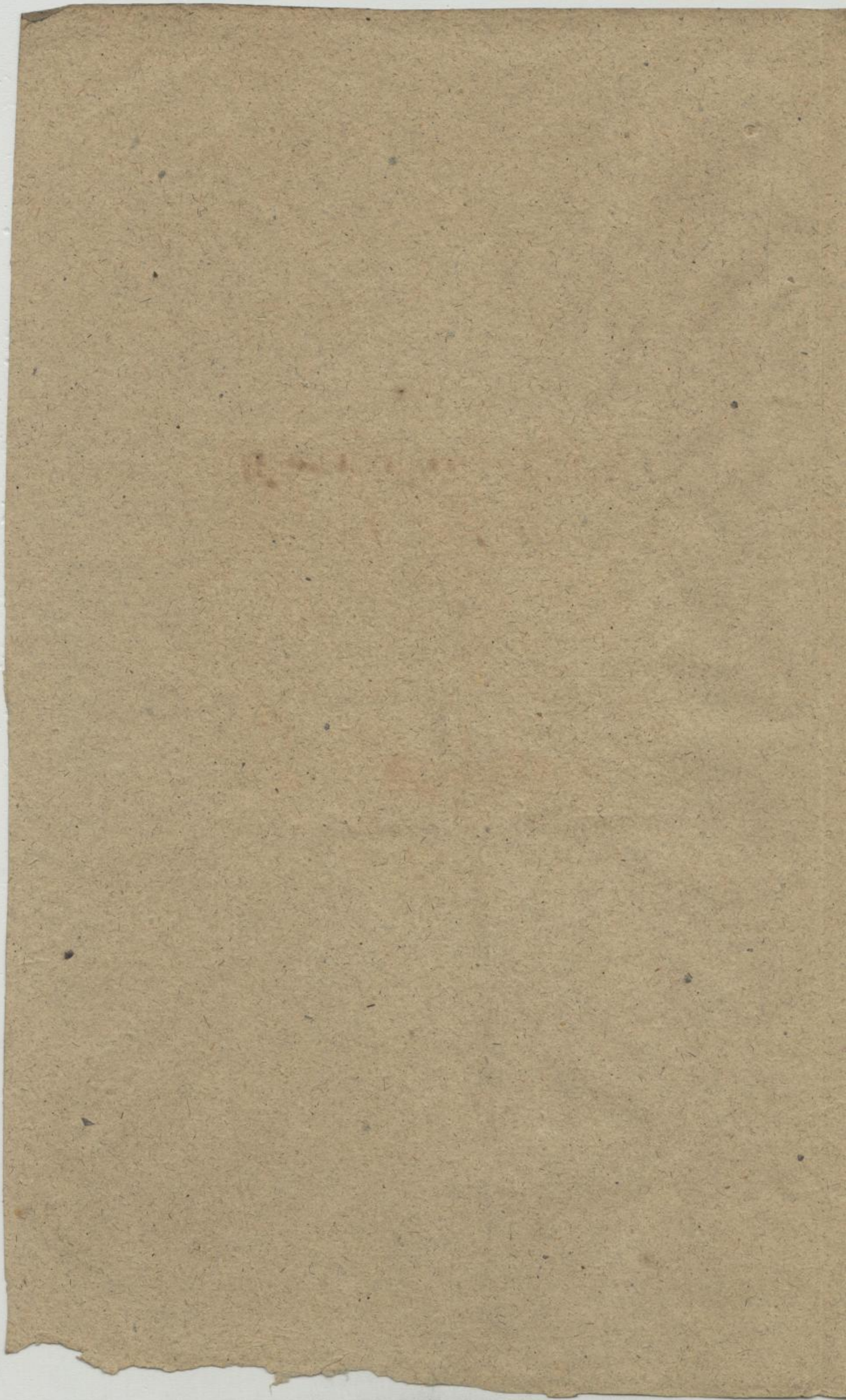
del Sig: Bernardi.



Musica	
2432	
R	1

















Sonata del Bernardi

*Largo*

The image shows a page of handwritten musical notation. It consists of approximately 14 systems of staves. Each system typically contains two staves, likely for a piano and a violin or flute. The notation is in a cursive hand, characteristic of the 18th or 19th century. The word "Largo" is written in the first system. The music includes various note values, rests, and clefs. The paper is aged and shows some staining and wear.

Siehe Landesbibl.

Mus. 2432-R-1

(1-2)

1



*Affettuoso*

Handwritten musical score on aged paper, featuring multiple staves of music with various notes, rests, and ornaments. The tempo marking "Affettuoso" is written in the first staff. The notation includes treble and bass clefs, a common time signature, and various rhythmic values such as eighth and sixteenth notes, often beamed together. There are also some decorative flourishes and slurs throughout the piece.



A page of handwritten musical notation on aged, yellowed paper. The score consists of ten systems of staves. The first system has four staves. The second system has two staves. The third system has two staves. The fourth system has two staves. The fifth system has two staves. The sixth system has two staves. The seventh system has two staves. The eighth system has two staves. The ninth system has two staves. The tenth system has two staves. The notation includes various note values, rests, and bar lines. There are some stains and foxing on the paper.

Largo

2 3



A page of handwritten musical notation on aged, yellowed paper. The score consists of 14 staves of music, arranged in pairs. The notation is in a historical style, featuring various note values, rests, and clefs. The first staff begins with a treble clef and a 6/8 time signature. The second staff has a different clef and a 3/4 time signature. The notation includes many beamed notes, suggesting a rhythmic melody. The paper shows signs of age, with some staining and wear at the edges.