

Villancico A duo A la Limpia Concepción

de Nra Señora
de Nra Señora

Suspendanse las voces

Por el Sr. M. D. Manuel de Sumara.

Año de 1715

Reconstrucción Paleográfica por: Agustín Esteban Monroy
Archivero Eco.

Alto *1^{to}* a duo

Suspendance las voces suspen dance las voces suspendanse / sus pondance las voces sus pen can

se sus pen dance se sus pen sus pen dance

se sus pen dance las voces brillar Lucir arder al oir al oir brillar lucir arder el mas di-

2 *Dimu instan te* gel cielo llegra a se r sus pen dance sus pen en

en en dance sus pen dance las no ta sus pen en

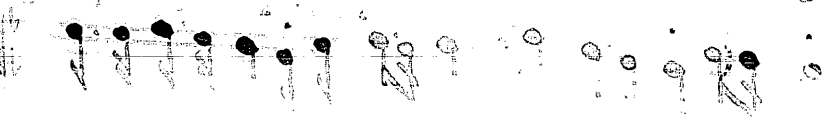
en dance al oir fu oir brillar ar der al oir lucir brillat lucir arder

This image shows a page of handwritten musical notation on aged, yellowed paper. The top staff contains a single line of music with various note values, including quarter and eighth notes, and rests. The notation is written in black ink. Below the first staff, there are several more staves, but they are mostly blank or contain very faint, illegible markings. The paper has a textured, slightly mottled appearance, and the edges are slightly irregular. The entire page is set against a dark, almost black background.



Callem las voces y el at-
 di quem proter bos hize
 lo niegan q' pudo Dio
 Señal Madre y Madre de Dio
 Señal Dios puro y tomar Car
 Luego siendo pura Dio

ma. Captiva, se lleve a ver
 que bien pudo suceder
 si tal Justicia conseder
 si luego en Dios p'vos caler
 de imaculada muger
 poderosa y sabe hazer



Andante sostenuto

Suscepit nos in brachiis suis

This image shows a page of handwritten musical notation on aged, yellowed paper. The score consists of ten staves of music. The first staff begins with the tempo marking "Andante sostenuto". The second staff contains the Latin lyrics "Suscepit nos in brachiis suis" written in a cursive hand. The music is written in a single system across the ten staves, with various note values, rests, and bar lines. The paper shows signs of wear, including creases and some staining, particularly along the right edge.