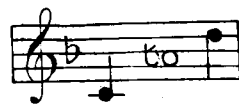
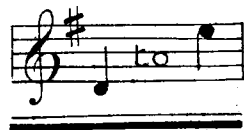


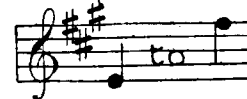
N^o. 1 IN F



N^o. 2 IN G



N^o. 3 IN A



SUNG BY
MR. JOHN COATES.

LINDEN LEA

A Dorset Song

THE WORDS BY

W. BARNES

The Music by

R. VAUGHAN WILLIAMS.

PRICE 2/- NET

BOOSEY & CO., LTD.

295, REGENT STREET, LONDON, W.

AND

STEINWAY HALL, 111-113, WEST 57TH STREET, NEW YORK.

THE PUBLIC PERFORMANCE OF ANY PARODIED VERSION OF THIS COMPOSITION IS STRICTLY PROHIBITED.

COPYRIGHT 1912 BY BOOSEY & CO.

R. Vaughan Williams

LINDEN LEA.

(A DORSET FOLK SONG.)

(ORIGINAL.)

Within the woodlands, flow'ry gladed,
By the oak trees' mossy moot,
The shining grass blades, timber shaded,
Now do quiver under foot;
And birds do whistle overhead,
And water's bubbling in its bed;
And there for me, the apple tree
Do lean down low in Linden Lea.

When leaves, that lately were a-springing,
Now do fade within the copse,
And painted birds do hush their singing,
Up upon the timber tops;
And brown leaved fruit's a-turning red,
In cloudless sunshine overhead,
With fruit for me, the apple tree
Do lean down low in Linden Lea.

Let other folk make money faster,
In the air of dark-room'd towns;
I don't dread a peevish master,
Though no man may heed my frowns.
I be free to go abroad,
Or take again my homeward road,
To where, for me, the apple tree
Do lean down low in Linden Lea.

'Ithin the woodlands, flow'ry glæded,
By the woak trees' mossy moot,
The sheenen grass blæades, timber shæaded,
Now do quiver under voot;
An' birds do whissle auverhead,
An' water's bubblen in its bed;
An' there vor me, the apple tree
Do lean down low in Linden Lea.

When leaves that lætely were a-springen,
Now do fade 'ithin the copse,
An' painted birds do hush their zingen,
Up upon the timber tops;
An' brown leaved fruit's a-turning red,
In cloudless zunsheen auverhead,
Wi' fruit vor me, the apple tree
Do lean down low in Linden Lea.

Let other vo'k meäke money vaster,
In the air o' dark-room'd towns;
I dont dread a peevish meäster,
Though noo man may heed my frowns.
I be free to go abrode,
Or take ageän my hwomeward road,
To where, vor me, the apple tree
Do lean down low in Linden Lea.

W. BARNES.

Linden Lea.

A DORSET SONG.

Words by
W. BARNES.Music by
R. VAUGHAN WILLIAMS.

Andante con moto.

VOICE. *mp*

PIANO. *mp* *rit.*

With - in the
(Original) 'Ith - in the

wood - lands, flow'r - y glad - ed, By the oak trees' moss - y moot; The shin - ing
wood - lands, flow'r - y glæad - ed, By the woak trees' moss - y moot, The sheen - en

grass blades, tim - ber sha - ded, Now do qui - ver un - der foot; And birds do
grass blæades, tim - ber shæad - ed, Now do qui - ver un - der voot; An' birds do

mf *mp*

whis - tle o - ver - head, And wa - ter's bub - bling in its bed; And there for
whis - sle au - ver - head, An' wa - ter's bub - blen in its bed; An' there vor

me, The ap - ple tree Do lean down low in Lin - den Lea.
me, The ap - ple tree Do lean down low in Lin - den Lea.

colla voce mp

mf

When leaves, that late - ly were a -
When leaves, that læate - ly were a -

rit.

-spring - ing, Now do fade with - in the copse, And paint - ed birds do hush their
spring - en, Now do fade 'ith - in the copse, An' paint - ed birds do hush their

sing - ing, Up up - on the tim - ber tops; And brown leaved fruit's a - turn - ing
zing - en, Up up - on the tim - ber tops; An' brown leaved fruit's a - turn - ing

red, In cloud - less sun - shine o - ver - head, With fruit for me, the ap - ple
red, In cloud - less sun - sheen au - ver - head, Wi' fruit vor me, the ap - ple

tree Do lean down low in Lin - den Lea.
tree Do lean down low in Lin - den Lea.

colla voce. *mp*

Animato. *f*

Let o - ther folk make mo - ney fas - ter; In the
Let o - ther vok meüke mo - ney vas - ter, In the

rit. *f*

mf

air of dark-room'd towns; I don't dread a peev-ish mas-ter, Though no
air o' dark-room'd towns; I don't dread a peev-ish meis-ter; Though noo

risoluto *pp poco rall.*

man may heed my frowns. I be free to go a-broad, Or take a-
man may heed my frowns. I be free to go a-brode, Or take a-

f risoluto *pp colla voce*

a tempo *p*

-gain my home-ward road, To where, for me, The ap-ple tree Do lean down
-geän my hwome-ward road, To where, vor me, The ap-ple tree Do lean down

a tempo

rall.

low in Lin - den Lea.....
low in Lin - den Lea.....

colla voce *pp*

BOOSEY & CO.'S New and Standard Songs and Ballads.

PRICE TWO SHILLINGS EACH NET.

The Compass of the first Key only is given: from this the Compass of the other Keys can be readily found.

Song	Compass of 1st Key	Sung by	Song	Compass of 1st Key	Sung by	Song	Compass of 1st Key	Sung by
STEPHEN ADAMS ROSES, A, B, C, D, E, F, G, H, I, J, K, L, M, N, O, P, Q, R, S, T, U, V, W, X, Y, Z, AA, AB, AC, AD, AE, AF, AG, AH, AI, AJ, AK, AL, AM, AN, AO, AP, AQ, AR, AS, AT, AU, AV, AW, AX, AY, AZ, BA, BB, BC, BD, BE, BF, BG, BH, BI, BJ, BK, BL, BM, BN, BO, BP, BQ, BR, BS, BT, BU, BV, BW, BX, BY, BZ, CA, CB, CC, CD, CE, CF, CG, CH, CI, CJ, CK, CL, CM, CN, CO, CP, CQ, CR, CS, CT, CU, CV, CW, CX, CY, CZ, DA, DB, DC, DD, DE, DF, DG, DH, DI, DJ, DK, DL, DM, DN, DO, DP, DQ, DR, DS, DT, DU, DV, DW, DX, DY, DZ, EA, EB, EC, ED, EE, EF, EG, EH, EI, EJ, EK, EL, EM, EN, EO, EP, EQ, ER, ES, ET, EU, EV, EW, EX, EY, EZ, FA, FB, FC, FD, FE, FF, FG, FH, FI, FJ, FK, FL, FM, FN, FO, FP, FQ, FR, FS, FT, FU, FV, FW, FX, FY, FZ, GA, GB, GC, GD, GE, GF, GH, GI, GJ, GK, GL, GM, GN, GO, GP, GQ, GR, GS, GT, GU, GV, GW, GX, GY, GZ, HA, HB, HC, HD, HE, HF, HG, HH, HI, HJ, HK, HL, HM, HN, HO, HP, HQ, HR, HS, HT, HU, HV, HW, HX, HY, HZ, IA, IB, IC, ID, IE, IF, IG, IH, II, IJ, IK, IL, IM, IN, IO, IP, IQ, IR, IS, IT, IU, IV, IW, IX, IY, IZ, JA, JB, JC, JD, JE, JF, JG, JH, JI, JJ, JK, JL, JM, JN, JO, JP, JQ, JR, JS, JT, JU, JV, JW, JX, JY, JZ, KA, KB, KC, KD, KE, KF, KG, KH, KI, KJ, KK, KL, KM, KN, KO, KP, KQ, KR, KS, KT, KU, KV, KW, KX, KY, KZ, LA, LB, LC, LD, LE, LF, LG, LH, LI, LJ, LK, LL, LM, LN, LO, LP, LQ, LR, LS, LT, LU, LV, LW, LX, LY, LZ, MA, MB, MC, MD, ME, MF, MG, MH, MI, MJ, MK, ML, MM, MN, MO, MP, MQ, MR, MS, MT, MU, MV, MW, MX, MY, MZ, NA, NB, NC, ND, NE, NF, NG, NH, NI, NJ, NK, NL, NM, NN, NO, NP, NQ, NR, NS, NT, NU, NV, NW, NX, NY, NZ, OA, OB, OC, OD, OE, OF, OG, OH, OI, OJ, OK, OL, OM, ON, OO, OP, OQ, OR, OS, OT, OU, OV, OW, OX, OY, OZ, PA, PB, PC, PD, PE, PF, PG, PH, PI, PJ, PK, PL, PM, PN, PO, PP, PQ, PR, PS, PT, PU, PV, PW, PX, PY, PZ, QA, QB, QC, QD, QE, QF, QG, QH, QI, QJ, QK, QL, QM, QN, QO, QP, QQ, QR, QS, QT, QU, QV, QW, QX, QY, QZ, RA, RB, RC, RD, RE, RF, RG, RH, RI, RJ, RK, RL, RM, RN, RO, RP, RQ, RR, RS, RT, RU, RV, RW, RX, RY, RZ, SA, SB, SC, SD, SE, SF, SG, SH, SI, SJ, SK, SL, SM, SN, SO, SP, SQ, SR, SS, ST, SU, SV, SW, SX, SY, SZ, TA, TB, TC, TD, TE, TF, TG, TH, TI, TJ, TK, TL, TM, TN, TO, TP, TQ, TR, TS, TT, TU, TV, TW, TX, TY, TZ, UA, UB, UC, UD, UE, UF, UG, UH, UI, UJ, UK, UL, UM, UN, UO, UP, UQ, UR, US, UT, UY, UZ, VA, VB, VC, VD, VE, VF, VG, VH, VI, VJ, VK, VL, VM, VN, VO, VP, VQ, VR, VS, VT, VU, VV, VW, VX, VY, VZ, WA, WB, WC, WD, WE, WF, WG, WH, WI, WJ, WK, WL, WM, WN, WO, WP, WQ, WR, WS, WT, WU, WV, WW, WX, WY, WZ, XA, XB, XC, XD, XE, XF, XG, XH, XI, XJ, XK, XL, XM, XN, XO, XP, XQ, XR, XS, XT, XU, XV, XW, XX, XY, XZ, YA, YB, YC, YD, YE, YF, YG, YH, YI, YJ, YK, YL, YM, YN, YO, YP, YQ, YR, YS, YT, YU, YV, YW, YX, YZ, ZA, ZB, ZC, ZD, ZE, ZF, ZG, ZH, ZI, ZJ, ZK, ZL, ZM, ZN, ZO, ZP, ZQ, ZR, ZS, ZT, ZU, ZV, ZW, ZX, ZY, ZZ, AA, AB, AC, AD, AE, AF, AG, AH, AI, AJ, AK, AL, AM, AN, AO, AP, AQ, AR, AS, AT, AU, AV, AW, AX, AY, AZ, BA, BB, BC, BD, BE, BF, BG, BH, BI, BJ, BK, BL, BM, BN, BO, BP, BQ, BR, BS, BT, BU, BV, BW, BX, BY, BZ, CA, CB, CC, CD, CE, CF, CG, CH, CI, CJ, CK, CL, CM, CN, CO, CP, CQ, CR, CS, CT, CU, CV, CW, CX, CY, CZ, DA, DB, DC, DD, DE, DF, DG, DH, DI, DJ, DK, DL, DM, DN, DO, DP, DQ, DR, DS, DT, DU, DV, DW, DX, DY, DZ, EA, EB, EC, ED, EE, EF, EG, EH, EI, EJ, EK, EL, EM, EN, EO, EP, EQ, ER, ES, ET, EU, EV, EW, EX, EY, EZ, FA, FB, FC, FD, FE, FF, FG, FH, FI, FJ, FK, FL, FM, FN, FO, FP, FQ, FR, FS, FT, FU, FV, FW, FX, FY, FZ, GA, GB, GC, GD, GE, GF, GH, GI, GJ, GK, GL, GM, GN, GO, GP, GQ, GR, GS, GT, GU, GV, GW, GX, GY, GZ, HA, HB, HC, HD, HE, HF, HG, HH, HI, HJ, HK, HL, HM, HN, HO, HP, HQ, HR, HS, HT, HU, HV, HW, HX, HY, HZ, IA, IB, IC, ID, IE, IF, IG, IH, II, IJ, IK, IL, IM, IN, IO, IP, IQ, IR, IS, IT, IU, IV, IW, IX, IY, IZ, JA, JB, JC, JD, JE, JF, JG, JH, JI, JJ, JK, JL, JM, JN, JO, JP, JQ, JR, JS, JT, JU, JV, JW, JX, JY, JZ, KA, KB, KC, KD, KE, KF, KG, KH, KI, KJ, KK, KL, KM, KN, KO, KP, KQ, KR, KS, KT, KU, KV, KW, KX, KY, KZ, LA, LB, LC, LD, LE, LF, LG, LH, LI, LJ, LK, LL, LM, LN, LO, LP, LQ, LR, LS, LT, LU, LV, LW, LX, LY, LZ, MA, MB, MC, MD, ME, MF, MG, MH, MI, MJ, MK, ML, MM, MN, MO, MP, MQ, MR, MS, MT, MU, MV, MW, MX, MY, MZ, NA, NB, NC, ND, NE, NF, NG, NH, NI, NJ, NK, NL, NM, NN, NO, NP, NQ, NR, NS, NT, NU, NV, NW, NX, NY, NZ, OA, OB, OC, OD, OE, OF, OG, OH, OI, OJ, OK, OL, OM, ON, OO, OP, OQ, OR, OS, OT, OU, OV, OW, OX, OY, OZ, PA, PB, PC, PD, PE, PF, PG, PH, PI, PJ, PK, PL, PM, PN, PO, PP, PQ, PR, PS, PT, PU, PV, PW, PX, PY, PZ, QA, QB, QC, QD, QE, QF, QG, QH, QI, QJ, QK, QL, QM, QN, QO, QP, QQ, QR, QS, QT, QU, QV, QW, QX, QY, QZ, RA, RB, RC, RD, RE, RF, RG, RH, RI, RJ, RK, RL, RM, RN, RO, RP, RQ, RR, RS, RT, RU, RV, RW, RX, RY, RZ, SA, SB, SC, SD, SE, SF, SG, SH, SI, SJ, SK, SL, SM, SN, SO, SP, SQ, SR, SS, ST, SU, SV, SW, SX, SY, SZ, TA, TB, TC, TD, TE, TF, TG, TH, TI, TJ, TK, TL, TM, TN, TO, TP, TQ, TR, TS, TT, TU, TV, TW, TX, TY, TZ, UA, UB, UC, UD, UE, UF, UG, UH, UI, UJ, UK, UL, UM, UN, UO, UP, UQ, UR, US, UT, UY, UZ, VA, VB, VC, VD, VE, VF, VG, VH, VI, VJ, VK, VL, VM, VN, VO, VP, VQ, VR, VS, VT, VU, VV, VW, VX, VY, VZ, WA, WB, WC, WD, WE, WF, WG, WH, WI, WJ, WK, WL, WM, WN, WO, WP, WQ, WR, WS, WT, WU, WV, WW, WX, WY, WZ, XA, XB, XC, XD, XE, XF, XG, XH, XI, XJ, XK, XL, XM, XN, XO, XP, XQ, XR, XS, XT, XU, XV, XW, XX, XY, XZ, YA, YB, YC, YD, YE, YF, YG, YH, YI, YJ, YK, YL, YM, YN, YO, YP, YQ, YR, YS, YT, YU, YV, YW, YX, YZ, ZA, ZB, ZC, ZD, ZE, ZF, ZG, ZH, ZI, ZJ, ZK, ZL, ZM, ZN, ZO, ZP, ZQ, ZR, ZS, ZT, ZU, ZV, ZW, ZX, ZY, ZZ								

The public performance of any parodied versions of the above songs, etc., is strictly prohibited.