

Schlagzeug

# Die Puppenfee

## Vorspiel

Josef Bayer  
1852 - 1913

**Allegro** 17 **Moderato** kleine Cinellen

25

33 1. 35 2. 2 3/4

37 **Moderato** **Walzer** 30 1. 2 69 2. 2

71 8 rit. 30 2/4

111 **Allegro** 18

## No. 1 -10

1 **Allegro** **TACET**

10 6/8

1 **Allegro**  $q = 100$  8 No. 11 Harlekin 15 1. 24 2. 2/4

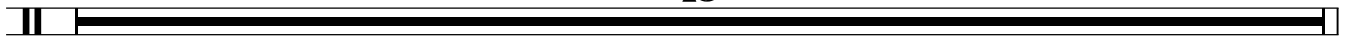
25 **Allegretto**  $q = 92$  15 **più mosso** 7 1. 2. 48

2  
Schlagzeug

Schlagzeug

49 Allegretto q = 92

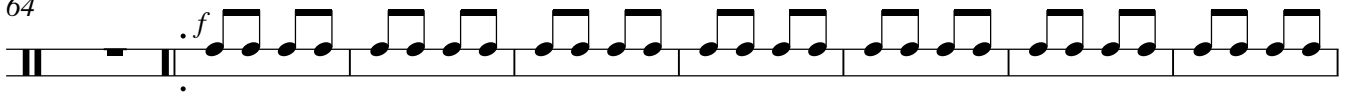
15



Agitato q = 88

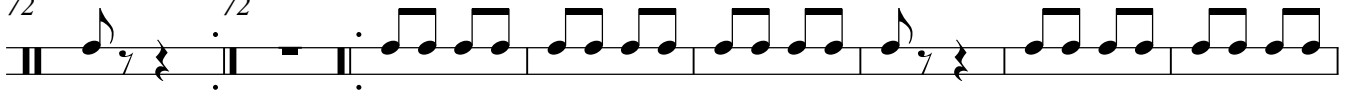
kleine Cinellen

64



72

1. 2. 72

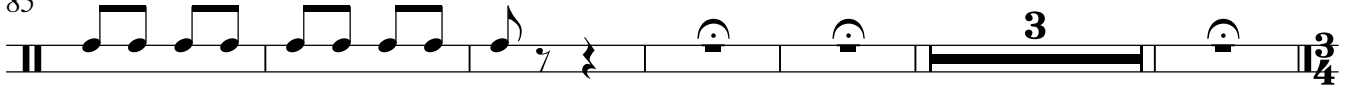


79

1. 2. 80



85

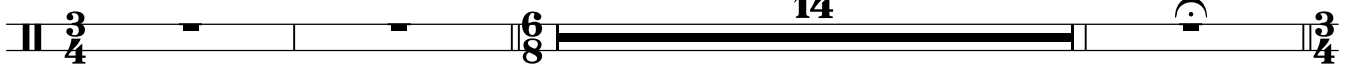


No. 12

1 [Tempo ad lib.]

Moderato q. = 54

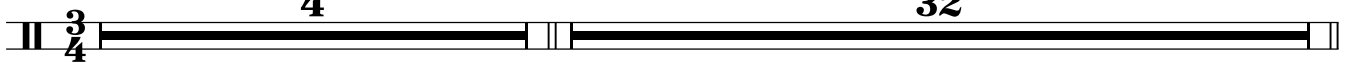
rit. . . . .



18 Tempo di Valse

4

32



54

30



No. 13

1 Allegro

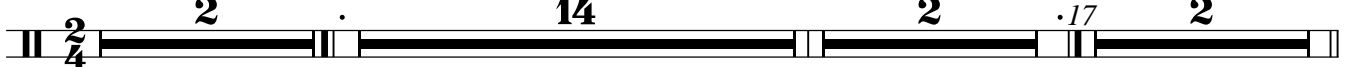
2

14

1. 2

2

2. 17 2



19

36

Moderato

4



1 **Andante**  
Tamtam.

Musical notation for No. 14. The first staff is marked with a double bar line, a common time signature 'C', and a dynamic marking 'p'. It contains seven measures of music, each with a half note followed by a square tamtam symbol. The second staff is marked with a double bar line and the number '8' below it. It contains five measures of music, each with a half note followed by a square tamtam symbol. The final measure of the second staff is a thick black bar with the number '6' above it, followed by a double bar line and a 3/4 time signature.

No. 15 - Fine

1 [Andante]

Musical notation for No. 15 - Fine. The first staff is marked with a double bar line and a 3/4 time signature. It contains a thick black bar with the number '2' above it, followed by a double bar line and a dot above it. This is followed by another thick black bar with the number '32' above it, ending with a double bar line and a 3/4 time signature.

1

Musical notation for TACET. The first staff is marked with a double bar line and a 3/4 time signature. It contains a thick black bar with the word 'TACET' written above it, ending with a double bar line.