

# BOURRÉE in G (GWV 856)

Score (01':00") *for Trumpet & Organ*

Christoph Graupner (1683 - 1760)  
Arr. Michel Rondeau

*Allegro moderato* ♩ = 100

Trumpet in C

Organ

Detailed description: This system contains the first four measures of the piece. The Trumpet in C part (top staff) begins with a quarter rest, followed by a quarter note G4, an eighth note A4, a quarter note B4, a quarter note G4, a quarter note F#4, a quarter note E4, a quarter note D4, and a quarter rest. The Organ part (bottom two staves) features a rhythmic accompaniment of eighth notes in the bass clef and chords in the treble clef. The key signature is one sharp (F#) and the time signature is common time (C).

C Tpt.

Org.

Detailed description: This system contains measures 5 through 8. The C Trumpet part (top staff) starts with a measure rest, followed by quarter notes G4, A4, B4, G4, F#4, E4, and D4, ending with a quarter rest. The Organ part (bottom two staves) continues the accompaniment with eighth notes in the bass and chords in the treble. Measure 8 ends with a double bar line and repeat dots.

C Tpt.

Org.

Detailed description: This system contains measures 9 through 12. The C Trumpet part (top staff) starts with a measure rest, followed by quarter notes G4, A4, B4, G4, F#4, E4, and D4, ending with a quarter rest. The Organ part (bottom two staves) continues the accompaniment with eighth notes in the bass and chords in the treble. Measure 12 ends with a double bar line and repeat dots.

BOURRÉE in G (GWV 856) - Graupner - Score

C Tpt.

Org.

13

C Tpt.

Org.

17

C Tpt.

Org.

21

# BOURRÉE in G (GWV 856)

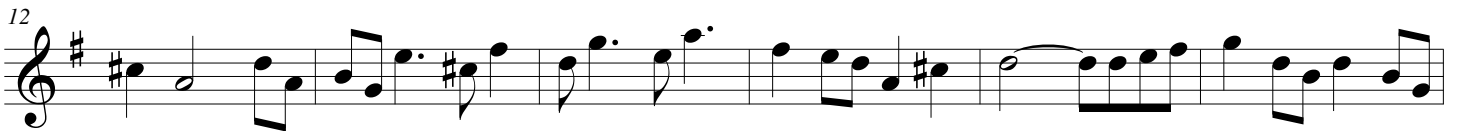
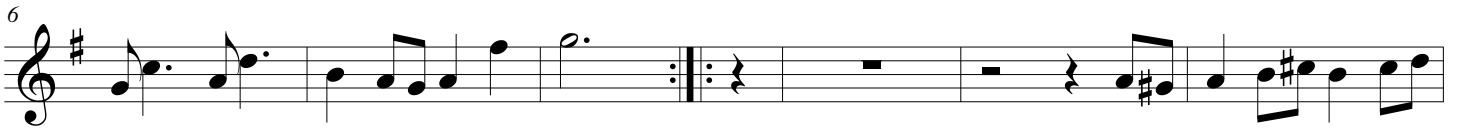
*for Trumpet & Organ*

## C Trumpet

Christoph Graupner (1683 - 1760)

Arr. Michel Rondeau

Allegro moderato  $\text{♩} = 100$



# BOURRÉE in G (GWV 856)

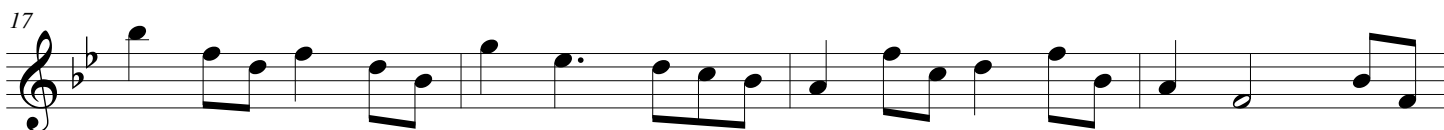
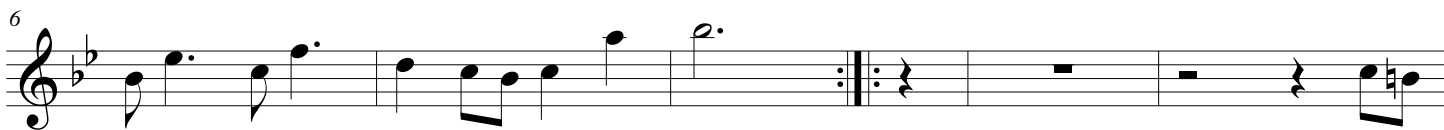
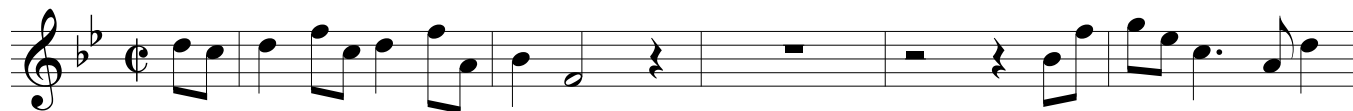
*for Trumpet & Organ*

## A Trumpet

Christoph Graupner (1683 - 1760)

Arr. Michel Rondeau

Allegro moderato  $\text{♩} = 100$





## BOURRÉE in G (GWV 856) - Graupner - Score

C Tpt.

13

Org.

Detailed description: This system covers measures 13 to 16. The C Tpt. part (top staff) begins with a treble clef, a key signature of one sharp (F#), and a common time signature. It features a melodic line with eighth and quarter notes, including a dotted quarter note and a half note. The Organ part (bottom two staves) consists of a right-hand part with chords and a left-hand part with a simple bass line. Measure 16 ends with a fermata over a whole note chord.

C Tpt.

17

Org.

Detailed description: This system covers measures 17 to 20. The C Tpt. part continues with a melodic line of eighth and quarter notes. The Organ part features a right-hand part with chords and a left-hand part with a simple bass line. Measure 20 ends with a fermata over a whole note chord.

C Tpt.

21

Org.

Detailed description: This system covers measures 21 to 24. The C Tpt. part continues with a melodic line of eighth and quarter notes. The Organ part features a right-hand part with chords and a left-hand part with a simple bass line. Measure 24 ends with a fermata over a whole note chord, followed by a double bar line and repeat dots.