

Handwritten musical notation on a single staff, starting with the tempo marking *All^o* and the word *Justo* above the staff.

Handwritten musical notation on a single staff, featuring dynamic markings *p*, *f*, and *f*.

Handwritten musical notation on a single staff, featuring dynamic markings *p* and *f*, and the word *for* above the staff.

Handwritten musical notation on a single staff, featuring dynamic markings *p*, *f*, and *f*.

Handwritten musical notation on a single staff, featuring dynamic markings *f* and *f*.

Handwritten musical notation on a single staff.

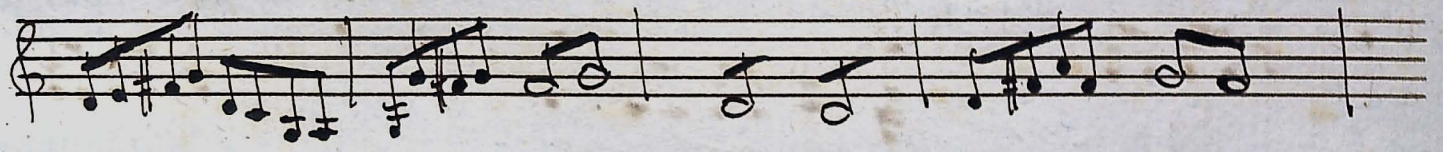
Handwritten musical notation on a single staff.

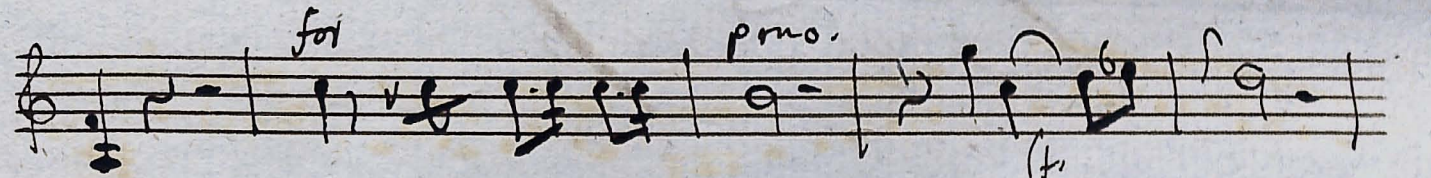
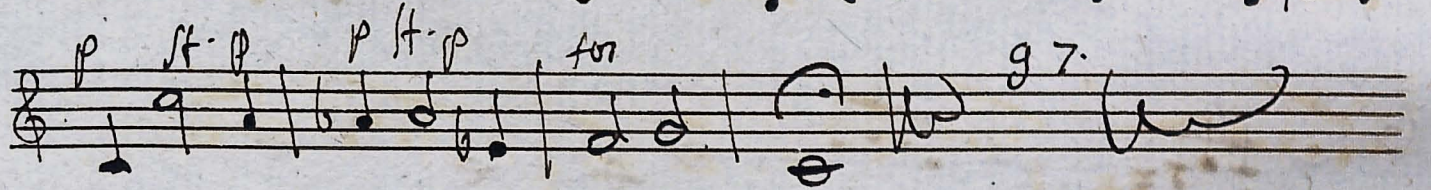
Handwritten musical notation on a single staff, starting with the tempo marking *all^o molto* and dynamic marking *f*.

Handwritten musical notation on a single staff, featuring dynamic marking *f*.

Handwritten musical notation on a single staff.

Volbi





Volbi

Handwritten musical notation on three staves. The first staff begins with a treble clef and contains a series of eighth and sixteenth notes. The second staff continues the melodic line with similar rhythmic patterns. The third staff concludes the piece with a final note and a fermata-like flourish.

Say Deo

