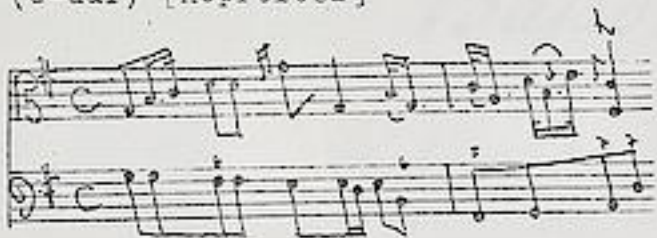


Graun, Johann Gottlieb (1702/03-1771)

BRD DS Mus.ms 359

TRJO à due Viole di Gamba [e Basso continuo] di Graun/  
(G-dur) [Kopftitel]



Adagio C G-dur - Alle-  
gro 2/4 G-dur - Alle-  
gro 3/8 G-dur.

Ms. ca.1750.

37 x 24,5 cm.

2 St.:vla di gamba 1,vla di gamba 2 mit bc. je 2 Bl.

Alte Sign.: Mus.4708.

Themat.Kat.Breitkopf II 1762: 2 Violinen,Bass.

*Wendt Nr. 62*

## Darmstädter Orchestral-Quellen/Darmstadt/Provinzen

1. Mus. ms. 1237: *Viola da gamba-Konzerte* — Maß (Wille 116), S. (1) Christian Ludwig Hesse, (2) Berlin? (Dank!), Wz. (1) o. Wz. bzw. unbekannt, (2) großes gekürztes Monogramm FR.
2. Mus. ms. 356: *Viola da gamba-Konzert D-Dur* (Wille 77), S. Christian Ludwig Hesse, Wz. (1) gekürzter Doppelpfad mit Kleeblattstängel auf dem Hügel, Hertschild mit Z belegt, (2) Unbestimmt.
3. Mus. ms. 355: *Viola da gamba-Konzert A-Dur* (Wille 57), S. Christian Ludwig Hesse, Wz. (1) gekürzter Doppelpfad mit Kleeblattstängel auf dem Hügel, Hertschild mit Z belegt, (2) gekürztes Wappen (V.a. da gamba).
4. Mus. ms. 354: *Viola da gamba-Konzert A-Dur* (Wille Nr. 99), S. Christian Ludwig Hesse, Wz. Buchst. darunter GRM.
5. in Mus. ms. 376: *Clarinete in C-Dur, Part. u. Bk., S. 7*, Wz. gekürzter Doppelpfad, Hertschild mit Z belegt.
6. in Mus. ms. 367: *Adriano in B-Dur, Part.*, S. (1) Holstein, (2) Schüler von Holstein, o. Wz.
7. Mus. ms. 377: *Clarinete in C-Dur, Part.*, S. C. E. Gross VI (siehe Wille), Wz. gekürzter Doppelpfad mit Kleeblattstängel auf dem Hügel, Hertschild mit Z belegt.
8. in Mus. ms. 349: *Danzboote, Part.*, S. (H) F. G. Sebe, (2) F. E. Holstein, Wz.: gekürzter Doppelpfad mit Kleeblattstängel auf dem Hügel, Hertschild mit Z belegt.
9. in Mus. ms. 349: *Danzboote*, Stimmen der Oboen, S. (1) 7, (2) 7, Wz. Minus B, kariv.
10. Mus. ms. 375: *Claro Fabricio, Part.*, S. J. A. Hesse VI (siehe Wille), Textschiff Dsc. von F. E. Holstein, gekürzter Doppelpfad mit Kleeblattstängel auf dem Hügel, Hertschild mit Z belegt.
11. in Mus. ms. 385: *Clarinete in C-Dur, Part. u. Ave.*, S. 7, Wz. gekürzter Doppelpfad mit Kleeblattstängel auf dem Hügel, Hertschild mit Z belegt.
12. in Mus. ms. 374: *Clarinete, Part.*, S. (1) Holstein, (2) Schüler von Holstein, Wz. ZITAV im Kreis.
13. in Mus. ms. 374: *Clarinete, Stimmen der Klarinetten*, S. wie 9., Wz. gekürzter Doppelpfad mit Kleeblattstängel auf dem Hügel, Hertschild mit Z belegt.
14. in Mus. ms. 383: *Z. / Danzboote*, Part., S. F. E. Holstein, o. Wz.
15. in Mus. ms. 390: *Clarinete in C-Dur, Part.*, S. 7, Wz. gekürzter Doppelpfad mit Kleeblattstängel auf dem Hügel, Hertschild mit Z belegt.
16. Mus. ms. 3606 III: *Ouvertüre G-Dur* (Menzick 6 20), Stimmen, S. (1) Christian Ludwig Hesse, (2) Berlin?, (3) 7, Wz. gekürzter Doppelpfad mit Kleeblattstängel auf dem Hügel, Hertschild mit Z belegt.
17. Mus. ms. 1235: *Quartett g-Moll, Stimmen*, S. Christian Ludwig Hesse, Wz. gekürzter Doppelpfad mit Kleeblattstängel auf dem Hügel, Hertschild mit Z belegt.
18. Mus. ms. 3634 I: *Sinfonie C-Dur* (Menzick 6 3), Stimmen, S. 7, Wz. gekürzter Doppelpfad mit Kleeblattstängel auf dem Hügel, Hertschild mit Z belegt.
19. Mus. ms. 36319: *Sinfonie D-Dur* (Menzick 6 41), Stimmen, S. 7, Wz. gekürzter Doppelpfad mit Kleeblattstängel auf dem Hügel, Hertschild mit Z belegt.
20. Mus. ms. 36321 II: *Sinfonie D-Dur* (Menzick 6 40), Stimmen (außer D.), S. (1) 7, (2) Christian Ludwig Hesse, Wz.: (1) Wappen mit Brunnengurgel, (2) gekürzter Doppelpfad mit Kleeblattstängel auf dem Hügel, Hertschild mit Z belegt.
21. Mus. ms. 36327 III: *Sinfonie E-Dur* (Menzick 6 76), Stimmen, S. (1) Christian Ludwig Hesse, (2) F. A. Hesse I (siehe Wille), Wz. gekürzter Doppelpfad mit Kleeblattstängel auf dem Hügel, Hertschild mit Z belegt.
22. Mus. ms. 36350: *Sinfonie F-Dur* (Menzick 6 59), Stimmen, S. J. A. Hesse I (siehe Wille), Wz. gekürzter Doppelpfad mit Kleeblattstängel auf dem Hügel, Hertschild mit Z belegt.
23. Mus. ms. 3637: *Sinfonie G-Dur* (Menzick 6 16), Stimmen, S. Christian Ludwig Hesse, Wz. gekürzter Doppelpfad mit Kleeblattstängel auf dem Hügel, Hertschild mit Z belegt.
24. Mus. ms. 36370: *Sinfonie G-Dur* (Menzick 6 16), Stimmen, S. (1) 7, (2) Christian Ludwig Hesse (St. 1, 2), Wz. gekürzter Doppelpfad mit Kleeblattstängel auf dem Hügel, Hertschild mit Z belegt.
25. Mus. ms. 36351: *Trio A-Dur* (Wend 10), Stimmen, S. Christian Ludwig Hesse, o. Wz.
26. Mus. ms. 358: *Trio G-Dur* (Wend 61), Stimmen, S. Christian Ludwig Hesse, o. Wz.

Musikalisches  
 Institut  
 Technische Universität Darmstadt



Mus 359

4708

Landes-Bibliothek

Mus.

359

Bd.

Darmstadt

~~4708~~

Mus 359

TRIO

a

Viola di Gamba I,  
\_\_\_\_\_ II,

e

Basso. #

fol (4) u





Ms 354

4

The image shows a page of handwritten musical notation on aged, yellowed paper. The page contains 12 horizontal staves, each consisting of five lines. The notation is written in dark ink and appears to be a form of early musical notation, possibly using dots and short horizontal strokes to represent notes and rests. The paper is heavily stained with foxing and has several small holes, particularly near the bottom right corner. The handwriting is somewhat faint and difficult to decipher.



Viola di Gamba 1.

Adagio

Handwritten musical score for Viola di Gamba 1, Adagio section. The score consists of ten staves of music. The key signature is one sharp (F#) and the time signature is 3/4. The music features a variety of rhythmic patterns, including eighth and sixteenth notes, and rests. Dynamic markings include *piano* and *forte*. There are also some performance instructions like *arco* and *tr* (trills). The paper shows signs of age and wear.

Allegro

Handwritten musical score for Viola di Gamba 1, Allegro section. The score consists of five staves of music. The key signature is one sharp (F#) and the time signature is 3/4. The music is more rhythmic and energetic than the Adagio section, featuring many sixteenth and thirty-second notes. Dynamic markings include *forte* and *piano*. There are also some performance instructions like *tr* (trills). The paper shows signs of age and wear.



2. *for.* *piano* *forte*

*piano* *forte* *tu*

4. *tu* *tu*

*piano* *forte* *tu*

2. *tu* *tu* *tu*

*pian.* *forte* *forte* *tu*

*pian.* *forte* *pianiss.* *tu*

*forte* *tu* *Volti*



*Allegro*

Handwritten musical score on aged paper, featuring 14 staves of music. The tempo is marked *Allegro*. The score includes various musical notations such as notes, rests, and dynamic markings like *forte* and *piano*. It also features numerical markings (4, 5) and the word *A fine* at the end.





TRIO à deux Viole di Gambe

di Graun

Mus 4708

Mus 359

Viola di Gamba 2.

The image shows a page of handwritten musical notation for the Viola di Gamba 2 part of a Trio à deux Viole di Gambe by Johann Sebastian Bach. The score is written on aged, yellowed paper and consists of several systems of staves. Each system typically includes a single staff for the instrument and a grand staff (treble and bass clefs) for the keyboard accompaniment. The notation is dense, featuring many sixteenth and thirty-second notes, often beamed together. Performance markings such as *piano*, *forte*, *pp.*, and *ff.* are interspersed throughout the piece. Fingering numbers (1-4) are written above or below notes. The piece concludes with a double bar line and a fermata. The page number '5' is visible in the top right corner.



6  
*Allegro*

This page contains a handwritten musical score for piano, consisting of several systems of staves. The music is written in a treble and bass clef with a key signature of one sharp (F#). The tempo is marked 'Allegro'. The score includes various musical notations such as notes, rests, and dynamic markings like 'piano' and 'forte'. There are also some numerical annotations above the notes, possibly indicating fingerings or specific rhythmic values. The paper is aged and shows some wear and tear.



8.  
Allegro

Handwritten musical notation for the first system, featuring a treble clef and a bass clef with a brace. The music includes various note values and rests.

Handwritten musical notation for the second system, including a treble clef and a bass clef with a brace. The notation is dense with notes and rests.

Handwritten musical notation for the third system, including a treble clef and a bass clef with a brace. Dynamic markings like "pia. pp." and "forte" are visible.

Handwritten musical notation for the fourth system, including a treble clef and a bass clef with a brace. The notation continues with complex rhythmic patterns.

Handwritten musical notation for the fifth system, including a treble clef and a bass clef with a brace. The notation is highly detailed with many notes.

Handwritten musical notation for the sixth system, including a treble clef and a bass clef with a brace. Dynamic markings "piano" and "forte" are present.

Handwritten musical notation for the seventh system, including a treble clef and a bass clef with a brace. The notation concludes with a large flourish.



Handwritten musical notation for the first system, featuring a treble and bass staff with complex rhythmic patterns and accidentals.

Handwritten musical notation for the second system, including dynamic markings like "piano" and various fingerings.

Handwritten musical notation for the third system, marked with "Forle" and "7#", showing intricate melodic lines.

Handwritten musical notation for the fourth system, featuring "piano" dynamics and trill-like markings.

Handwritten musical notation for the fifth system, with "piano" markings and complex rhythmic structures.

Handwritten musical notation for the sixth system, including "Forle", "pianiss.", and "Folte" markings, ending with a double bar line.

Two empty musical staves at the bottom of the page.