

Christoph Graupner

Kantate

*Wer nicht zur Tür hinein
geht*

(GWV 1140/43)

Solo Bass

2 Violini, Viola
Violoncello/Violone
Basso continuo

herausgegeben von
Werner Jaksch

Wer nicht zur Tür hinein gehet

Dictum

Christoph Graupner

Violoncello/Violone



6



9



Recitativo



9



Aria



9



16



24



31



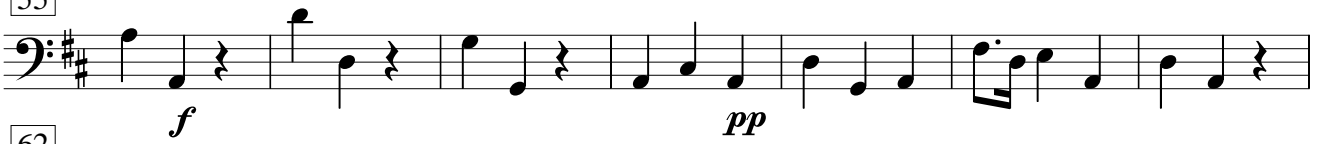
40



47



55



62



69



76



83



89



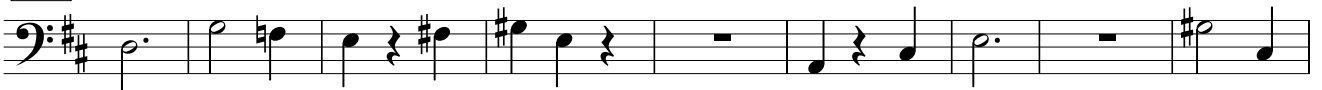
95



101



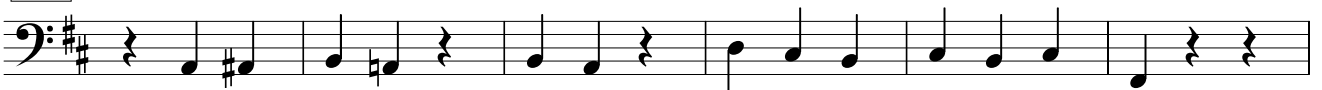
108



117



127



133



141



da capo

Recitativo



7



13



19



25



Aria



3



5



7



9



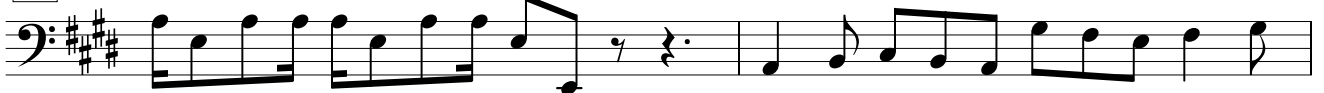
12



14



16



18

Musical staff 18, bass clef, key signature of three sharps (F#, C#, G#). The staff contains a series of eighth and quarter notes, ending with a fermata and a dynamic marking of *f*.

20

Musical staff 20, bass clef, key signature of three sharps. The staff contains a continuous stream of eighth notes.

22

Musical staff 22, bass clef, key signature of three sharps. The staff contains eighth notes and a half note with a fermata.

25

Musical staff 25, bass clef, key signature of three sharps. The staff contains quarter notes and eighth notes with rests.

28

Musical staff 28, bass clef, key signature of three sharps. The staff contains quarter notes and eighth notes with rests.

30

Musical staff 30, bass clef, key signature of three sharps. The staff contains eighth notes and quarter notes, with vertical bar lines above the staff.

33

Musical staff 33, bass clef, key signature of three sharps. The staff contains eighth notes and quarter notes, with vertical bar lines above the staff.

da capo

Choral

Musical staff for the Choral section, bass clef, key signature of three sharps, common time (C). The staff begins with a repeat sign and contains eighth notes, with dynamic markings of *f* and *p*.

4

Musical staff 4, bass clef, key signature of three sharps. The staff contains eighth notes with rests, with dynamic markings of *f* and *p*.

7

Musical staff 7, bass clef, key signature of three sharps. The staff contains eighth notes with rests, with dynamic markings of *f* and *p*.

10

Musical staff 10, bass clef, key signature of three sharps. The staff contains eighth notes with rests, with dynamic markings of *f* and *p*.

13

Musical staff 13, bass clef, key signature of three sharps. The staff contains eighth notes with rests, ending with a fermata, with a dynamic marking of *f*.