

I. Horn

IOLANTHE

Overture

A. Sullivan

in Andante

First staff of music with measures 1-18, 18-36, 36-46, 46-48, and a section labeled "Clarinet Cadenza." with a measure of 1. Includes rehearsal marks A, B, and C.

Second staff of music with measures 1-9, 9-15, 15-16, 16-17, 17-18, and 18-19. Includes rehearsal mark D and the tempo marking "rit." with a fermata over measure 17.

Third staff of music with measures 19-22, 22-23, 23-24, 24-25, 25-26, 26-27, and 27-28. Includes the tempo marking "Allegro gioioso" and rehearsal marks E, F, and G.

Fourth staff of music with measures 28-35, 35-36, 36-37, 37-38, 38-39, 39-40, 40-41, 41-42, 42-43, 43-44, 44-45, 45-46, 46-47, and 47-48. Includes rehearsal marks H, J, and K.

Fifth staff of music with measures 48-57, 57-61, 61-62, 62-63, 63-64, 64-65, 65-66, 66-67, 67-68, 68-69, 69-70, 70-71, 71-72, 72-73, 73-74, 74-75, 75-76, 76-77, 77-78, 78-79, 79-80, 80-81, 81-82, 82-83, 83-84, 84-85, 85-86, 86-87, 87-88, 88-89, 89-90, 90-91, 91-92, 92-93, 93-94, 94-95, 95-96, 96-97, 97-98, 98-99, 99-100. Includes rehearsal marks L, M, and N.

Sixth staff of music with measures 100-104, 104-108, 108-112, 112-116, 116-120, 120-124, 124-128, 128-132, 132-136, 136-140, 140-144, 144-148, 148-152, 152-156, 156-160, 160-164, 164-168, 168-172, 172-176, 176-180, 180-184, 184-188, 188-192, 192-196, 196-200. Includes a bracketed group of 4 measures.

Seventh staff of music with measures 200-204, 204-208, 208-212, 212-216, 216-220, 220-224, 224-228, 228-232, 232-236, 236-240, 240-244, 244-248, 248-252, 252-256, 256-260, 260-264, 264-268, 268-272, 272-276, 276-280, 280-284, 284-288, 288-292, 292-296, 296-300. Includes a bracketed group of 4 measures.

Eighth staff of music with measures 300-304, 304-308, 308-312, 312-316, 316-320, 320-324, 324-328, 328-332, 332-336, 336-340, 340-344, 344-348, 348-352, 352-356, 356-360, 360-364, 364-368, 368-372, 372-376, 376-380, 380-384, 384-388, 388-392, 392-396, 396-400. Includes rehearsal mark O and a series of numbered notes 2. through 8.

Ninth staff of music with measures 400-416, 416-432, and 432-448. Includes rehearsal marks P and Q.

I. Horn

- 2 -

Handwritten musical score for I. Horn, page 2. The score consists of 12 staves of music. The first staff is marked with a circled 'S'. The second staff has a circled '4' above a four-measure phrase. The third staff has a circled 'T' above a measure. The fourth staff is marked 'Clar.' and has a circled 'V' above a measure. The fifth staff has a circled 'W' above a measure. The sixth staff has a circled 'X' above a measure. The seventh staff has a circled '4' above a four-measure phrase. The eighth staff has a circled '4' above a four-measure phrase. The ninth staff has a circled '4' above a four-measure phrase. The tenth staff has a circled 'Y' above the text 'U istesso tempo'. The eleventh staff has a circled 'Z' above a measure. The twelfth staff has the word 'animato' written below it.

animato

I. Horn

- 3 -

Musical score for I. Horn, measures 1-10. The score consists of five staves. The first staff begins with a dynamic marking of *pp* and a first ending bracket over the first two measures. The second staff includes the instruction *Più vivo* and contains six measures of a sixteenth-note triplet. The third staff contains two measures of a sixteenth-note triplet. The fourth and fifth staves contain rhythmic patterns, including eighth and sixteenth notes, and a double bar line.

N° 1 Opening Chorus.

Allegretto

Musical score for the Opening Chorus, measures 1-8. The score consists of four staves. The first staff is marked *pp* and contains eight measures of a sixteenth-note triplet. The second staff contains eight measures of a sixteenth-note triplet. The third staff is marked *Solo* and contains four measures, including a triplet. The fourth staff is marked *Solo* and contains four measures, including a triplet and a boxed letter 'A' above a measure.

I. Horn

- 4 -

Handwritten musical score for I. Horn, page 4. The score consists of ten staves of music in 4/4 time. It features various musical notations including notes, rests, and dynamic markings such as 'p', 'mp', and 'A'. Section markers B, C, D, E, F, and G are placed above the staves. A sequence of ten numbered measures (1-10) is indicated below the eighth staff.

N° 2

Invocation

Andante

Musical notation for the first line of the Invocation, including measures 12, 13, 14, and 18. Above the staff are boxed letters A, B, C, and D. Above measure 14 is the name 'Jolanthe' and above measure 18 is 'Oboe'.

Musical notation for the second line of the Invocation, starting with the instruction 'pardonid, pardoned' and 'Maggiore'. The music includes various notes, rests, and dynamic markings such as 'f' and 'pp'.

N° 3

Entrance of Strophon

Musical notation for the beginning of the Entrance of Strophon, showing a treble clef, a key signature of one sharp, and a measure with a '20' marking.

N° 4 Exit of Fairies (Solo Queen)

Allegretto *in 2* **A** *in 4*

Musical score for Exit of Fairies (Solo Queen). It consists of four staves of music. The first staff is marked 'Allegretto in 2' and contains a boxed section 'A' marked 'in 4'. The music features a mix of eighth and sixteenth notes with rests. The second and third staves continue the melodic line. The fourth staff concludes with a double bar line and a 'pp' (pianissimo) dynamic marking.

N° 4 a Entrance of Phyllis

Musical score for Entrance of Phyllis. It consists of a single staff with a treble clef and a key signature of two flats. The staff contains a long horizontal line with the number '29' written above it, indicating a specific measure or rehearsal mark.

N° 5 Duet

Andante non troppo *Encore second verse*

**A** **B** **C**

Musical score for Duet. It consists of four staves of music. The first staff is marked 'Andante non troppo' and 'Encore second verse'. It begins with a treble clef and a 3/4 time signature. The second staff contains boxed sections 'A', 'B', and 'C'. The third staff shows first and second endings for section 'A'. The fourth staff concludes with a double bar line.

I HORN

>

# No 6 - Entrance + Horn of Peers

*Allargo*  
*Moderato*

DRUMS

TRUMPET

Handwritten musical score for I Horn, No 6 - Entrance + Horn of Peers. The score consists of 11 staves of music. It begins with a double bar line and a 'DRUMS' marking. The tempo markings 'Allargo' and 'Moderato' are written on the first staff. The music is in a key with one flat (B-flat major or D minor) and a 2/4 time signature. The score includes various rhythmic values such as quarter, eighth, and sixteenth notes, as well as rests. There are four boxed section markers labeled 'A', 'B', 'C', and 'D' placed above the staves. A dynamic marking 'f' is present in the sixth staff. The notation is handwritten and includes some corrections and slurs.

I HORN

8

ENCORE

**E**

**E**

**G**

**H**

**J**

2 3 4 5 6



creo

K

Handwritten musical score consisting of ten staves. The first staff begins with a treble clef and a key signature of one flat. The word "creo" is written above the first few notes. A box containing the letter "K" is placed above the eighth measure. The second staff continues the melody with a treble clef. The third staff features a treble clef and a series of notes with stems pointing downwards. The fourth staff has a treble clef and notes with stems pointing downwards. The fifth staff starts with a box containing the letter "L" and continues with notes and stems pointing downwards. The sixth staff has a treble clef and notes with stems pointing downwards. The seventh staff has a treble clef and contains three measures with slurs and the numbers 2, 3, and 4 written above them. The eighth staff has a treble clef and contains a double bar line followed by the text "Encore - 5th Bar after" and a box containing the letter "F". The bottom three staves are empty.

Three empty musical staves at the bottom of the page.

I. Horn

- 10 -

~~No. 1~~  
All<sup>o</sup> vivace

Entrance of Lord Chancellor

FAG

A musical staff with a treble clef and a key signature of one flat. A fermata is placed over the staff, with the number '20' written below it, indicating a 20-measure rest.

~~No. 2~~

Song

All<sup>o</sup> vivace

A musical staff with a treble clef and a key signature of one flat. It begins with a 4-measure rest, followed by a quarter note, a quarter note with a fermata, and a quarter note. The staff continues with a series of rhythmic patterns: eighth notes, quarter notes, and eighth notes, ending with a double bar line.

Violins

Solo

A

B

A musical staff with a treble clef and a key signature of one flat. It features a solo section with a fermata over a quarter note. Two measures are marked with boxes labeled 'A' and 'B'. The staff continues with rhythmic patterns of eighth and quarter notes.

3 Verses / last verse

A musical staff with a treble clef and a key signature of one flat. It contains the first verse of the song, consisting of a sequence of eighth and quarter notes, ending with a double bar line.

A musical staff with a treble clef and a key signature of one flat. It contains the second and third verses of the song, consisting of rhythmic patterns of eighth and quarter notes, ending with a double bar line.

I. Horn

- 11 -

N<sup>o</sup> 8 TRIO and CHORUS of PEERS

Allegretto grazioso

A A la Barcarolle

14 2 6 10

1. 2. 1. 2.

1. 2. 3. 4.

19 10

rall. . . . 2 3 5 14

1. 2. 1. 2.

rall. 1. 2. 3. 4. 5.

6. 19

N<sup>o</sup> 9 Recit. Phyllis

moderato

9

Nº 10 Chorus of Peers & Song

Andante

Musical score for N° 10, Chorus of Peers & Song, Andante. The score consists of five staves. The first staff begins with a boxed letter 'A' and contains a first ending bracket. Above the staff are markings '2.', '3.', and '4.'. The second staff includes the instruction 'cresc.' and a boxed letter 'B'. The third staff has first and second ending brackets labeled '1.' and '2.'. The fourth staff contains the instruction 'segue'. The fifth staff is empty.

Nº 11 Phyllis Lords and Chorus

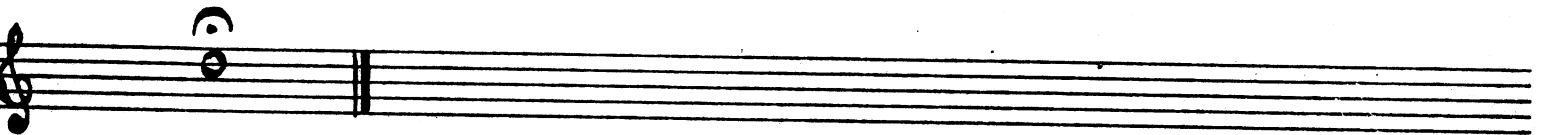
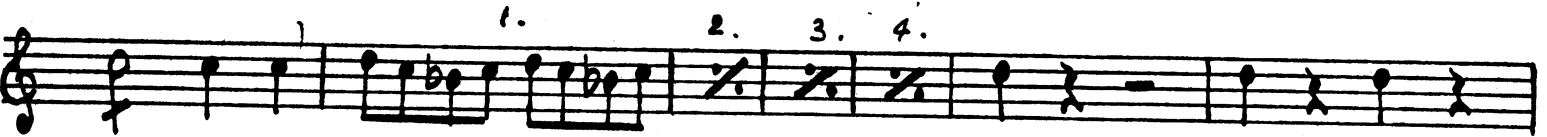
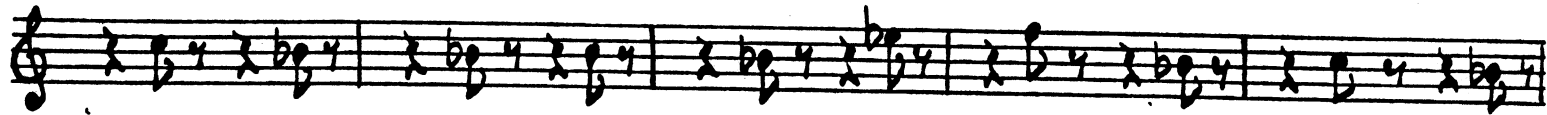
Moderato

Allegro

Musical score for N° 11, Phyllis Lords and Chorus. The score consists of seven staves. The first staff is marked 'Moderato' and contains boxed letters 'C', 'D', 'E', and 'F'. The second staff contains boxed letters 'G' and 'H'. The third staff is marked 'Allegro'. The fourth staff contains boxed letters 'I' and 'J'. The fifth staff has first and second ending brackets labeled '1.' through '8.'. The sixth staff contains boxed letters 'K' and 'L'. The seventh staff ends with the instruction 'ff'.

I. Horn

- 13 -



No 12

Song Lord Chancellor

Allegro comodo

ENCORE

Solo

2 4 verses

16

Last time

Encore beginning last verse

# No 13. Finale - Act I

*Moderato* 11 **A** 10 **B**

*Allegro agitato*

*Primo* *rit* **C** 6 **D** 10 **E** 12

*Andante espress* **F** 3 **G** 5 **H** 16 **I** 15

*pp* *Allegro* **J** 6 **K** 4 **L** 10

*Allegretto* **M** 1

*Allegro in brio* **N** 8

*f*

I HORN

-15-

Handwritten musical score for I Horn, page 15. The score consists of 12 staves of music. The first staff begins with a boxed letter 'N' and includes the tempo marking 'a tempo'. The second staff contains a boxed letter 'Q'. The third staff features a 'Piu Vivo' marking. The fourth staff has boxed letters 'R', 'S', 'T', and 'U'. The fifth staff includes a 'dim' marking and a boxed letter 'W'. The sixth staff is marked 'Allegro Vivace'. The seventh staff contains boxed letters 'X', 'Y', and 'Z'. The eighth staff has a boxed letter 'A'. The ninth staff has a boxed letter 'B'. The tenth staff has a boxed letter 'C'. The eleventh staff has a boxed letter 'D'. The twelfth staff has a boxed letter 'E'. The score includes various musical notations such as notes, rests, and dynamic markings.

I HORN  
- 16 -

5 6 7 8 C

Handwritten musical notation for the first system, consisting of two staves. The first staff contains a sequence of notes with fingerings 5, 6, 7, and 8. Above the fifth measure, there is a circled letter 'C'. The second staff contains a sequence of notes with slurs and a double bar line.

D E F 13 G 13

H I *Allegro un troppo* (K2)

Handwritten musical notation for the second system, consisting of two staves. The first staff contains boxed letters D, E, F, G, and 13. The second staff contains boxed letters H and I, followed by the tempo marking 'Allegro un troppo' and a circled 'K2'.

K *SIM*

Handwritten musical notation for the third system, consisting of two staves. The first staff contains a boxed letter 'K' and the tempo marking 'Allegro un troppo'. The second staff contains a sequence of notes with slurs and a double bar line.

*Recit'*

*Allegro molto*

Handwritten musical notation for the fourth system, consisting of two staves. The first staff contains the tempo marking 'Allegro molto' and a sequence of notes with slurs. The second staff contains a sequence of notes with slurs and a double bar line.

*Allegro marziale*

Handwritten musical notation for the fifth system, consisting of two staves. The first staff contains the tempo marking 'Allegro marziale' and a sequence of notes with slurs. The second staff contains a sequence of notes with slurs and a double bar line.

L

Handwritten musical notation for the sixth system, consisting of two staves. The first staff contains a boxed letter 'L' and a sequence of notes with slurs. The second staff contains a sequence of notes with slurs and a double bar line.



I HORN

- 17 -

M O N P Q R S U V

Handwritten musical notation for the first part of the piece, consisting of two staves of music. The notation includes various note values, rests, and dynamic markings.

Act. Two

No 1

Song (Sentry)

Andante

Musical staff 1 for "Song (Sentry)", starting with a treble clef and a 4-measure rest.

Musical staff 2 for "Song (Sentry)", continuing the melody with a treble clef.

Musical staff 3 for "Song (Sentry)", featuring a treble clef, a boxed 'A' above the first measure, and numbered measures 1 through 7.

Musical staff 4 for "Song (Sentry)", featuring a bass clef, a "Solo" marking, and a measure numbered 8.

Musical staff 5 for "Song (Sentry)", featuring a treble clef, a boxed 'B' above the final measure, and a measure numbered 16.

Musical staff 6 for "Song (Sentry)", featuring a treble clef, a boxed 'C' above the first measure, and the word "ENCORE" written above the staff.

Musical staff 7 for "Song (Sentry)", featuring a treble clef and concluding the piece.

N<sup>o</sup> 2 Chorus of Fairies & Peers

Allegro

1. 2. 3. 4. 5. 6. 7.

8. 9. 10. 11. 12

1. 2. 3. 4. 5. 6.

1. 2. 3.

N<sup>o</sup> 3 Song Solo & Chorus

Maestoso

1. 2. 3.

N<sup>o</sup> 4 Duet

Musical notation for N° 4 Duet. It consists of a single staff with a treble clef and a 2/4 time signature. The notation includes a first ending bracket labeled '2', a repeat sign, a second ending bracket labeled '3 4', and a final ending bracket labeled '9'.

N<sup>o</sup> 5 Song (Queen - Chorus)

Andante

Musical notation for N° 5 Song (Queen - Chorus). It consists of four staves with a treble clef and a 3/4 time signature. The tempo is marked 'Andante'. The notation includes a first ending bracket labeled '1', a repeat sign, and four measures of music with first and second endings labeled '1.' and '2.', '3.' and '4.'. The first ending is marked with a piano dynamic 'p'. The second ending is marked with a forte dynamic 'f'. The notation also includes a final ending bracket labeled '12' and a final ending bracket labeled '5'.

N<sup>o</sup> 6<sup>19</sup> Quartet

Musical notation for N° 6<sup>19</sup> Quartet. It consists of a single staff with a treble clef and a common time signature 'C'. The notation includes a first ending bracket labeled '4 6'.

I. Horn  
- 21 -

20

N<sup>o</sup> 7 Recit. and Song

Allegro

Recit

A

B

Allegro ma non troppo

C

Musical staff with measures 1-16. Rehearsal marks A (measures 1-10), B (measures 11-13), and C (measures 14-16). Time signature changes from 4/8 to 3/8.

Musical staff with measures 17-21. Rehearsal marks D (measures 17-18), E (measures 19-20), F (measures 21-22), and G (measures 23-25). Time signature is 3/8.

get some repose in the form of a doze, dream you are crossin

Musical staff with measures 26-30. Rehearsal marks H (measures 26-27), J (measures 28-29), K (measures 30-31), and L (measures 32-33). Time signature is 3/8.

ENCORE

He and the crew are on

Musical staff with measures 34-38. Rehearsal marks M (measures 34-35) and N (measures 36-38). Time signature is 3/8.

Musical staff with measures 39-44. Rehearsal mark O (measures 40-44). Time signature is 3/8.

Musical staff with measures 45-50. Rehearsal marks Q (measures 46-50) and R (measures 51-54). Time signature is 3/8.

Musical staff with measures 55-59. Rehearsal mark S (measures 55-59). Time signature is 3/8.

But the..

Musical staff with measures 60-64. Time signature is 3/8.

Musical staff with measures 65-73. Time signature is 3/8.

Musical staff with measures 74-78. Time signature is 3/8.

# No 8. Trio

Tempo da Vela

Handwritten musical notation for the first section. The top staff contains a melodic line in treble clef with a key signature of one sharp (F#) and a common time signature. The bottom staff contains the title "No 9 - Duet".

Handwritten musical notation for the second section. The top staff is titled "Allegro Grazioso" and features a melodic line in treble clef with a key signature of one sharp and a 6/8 time signature. The bottom staff contains a bass line with notes and rests, and includes boxed chord symbols A, B, C, and D.

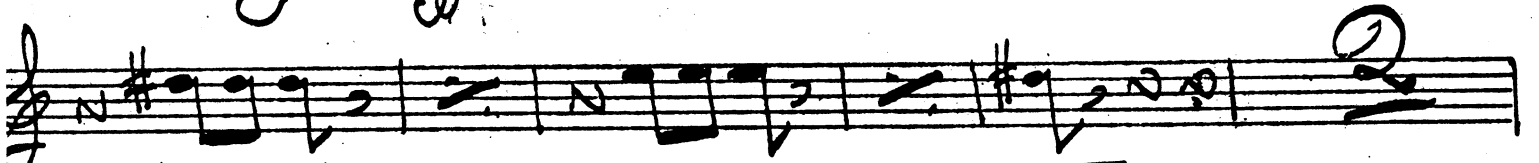
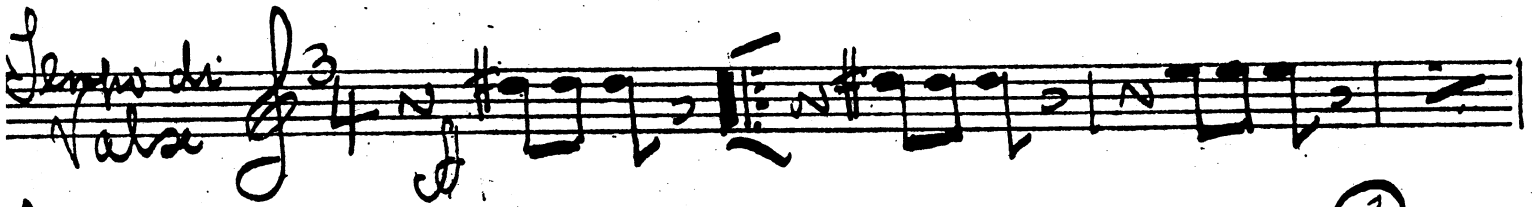
Handwritten musical notation for the third section, consisting of a single staff with the title "No 10 - Recit + Ballad - Tact".

Handwritten musical notation for the fourth section, consisting of a single staff with the title "No 11 - Ensemble".

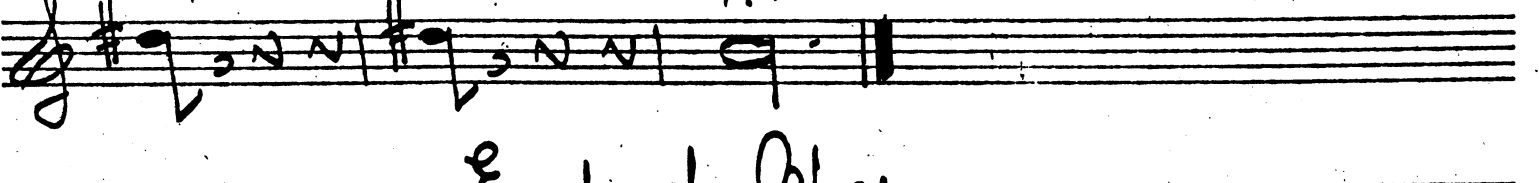
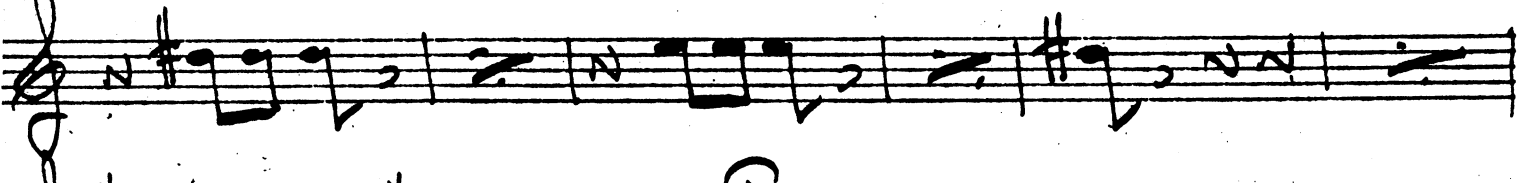
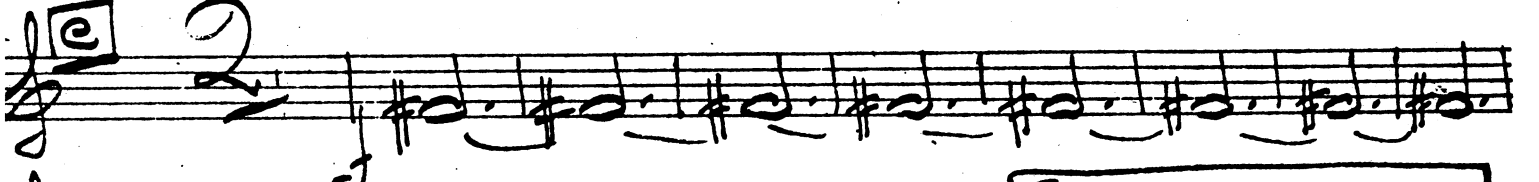
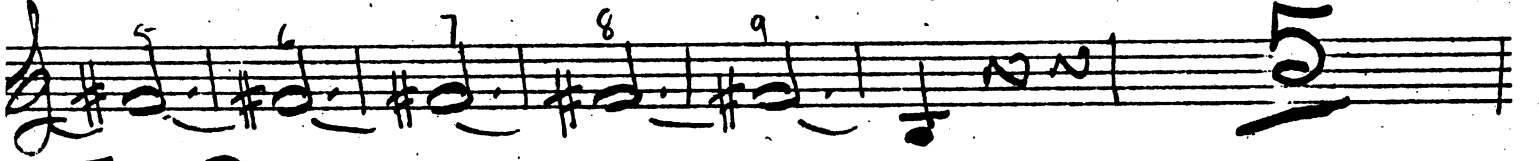
Handwritten musical notation for the fifth section. The top staff is titled "Recit" and features a melodic line in treble clef with a key signature of one sharp and a 3/2 time signature. The bottom staff contains a bass line with notes and rests, and includes boxed chord symbols A, B, C, D, E, F, G, and H. The tempo marking "Andante moderato" is written above the staff.

# No 12. Finale I

*Tempo di Valse*



VOICE



End of Opera