

H. M. S. PINAFORE

DRUMS

Arthur SULLIVAN

OVERTURE

Allegro Timp. Eb

Solo tr

G.C. & Cym.

Musical staff for Bass Drum (Bass D. Only). The staff is in bass clef with a 2/4 time signature. It begins with a dynamic marking of *p* (piano) and a *cresc* (crescendo) marking. The music consists of a series of eighth notes and quarter notes. A *f* (forte) dynamic marking is present. The staff concludes with a *f* dynamic marking and the instruction *Bass D. Only*.

Musical staff for Bass Drum (Bass D. Only). The staff is in bass clef with a 2/4 time signature. It continues the rhythmic pattern of eighth and quarter notes.

Musical staff for Bass Drum (Bass D. Only). The staff is in bass clef with a 2/4 time signature. It includes a measure rest for 16 measures.

Musical staff for Bass Drum (Bass D. Only). The staff is in bass clef with a 2/4 time signature. It continues the rhythmic pattern of eighth and quarter notes.

Musical staff for Bass Drum (Bass D. Only). The staff is in bass clef with a 2/4 time signature. It continues the rhythmic pattern of eighth and quarter notes.

Musical staff for Bass Drum (Bass D. Only). The staff is in bass clef with a 2/4 time signature. It includes a measure rest for 7 measures.

Andante

20

A

Cassa & Cymb.

All: Vivace
18

Musical staff for Cassa & Cymbal. The staff is in bass clef with a 2/4 time signature. It begins with a measure rest for 20 measures, followed by a key signature change to one flat (Bb) and a time signature change to 3/4. The music consists of eighth notes and quarter notes. It concludes with a measure rest for 18 measures.

Triangle

1

2

3

4

5

6

7

8

Musical staff for Triangle. The staff is in treble clef with a 2/4 time signature. It consists of eighth notes and quarter notes, numbered 1 through 8.

B

Triangle

1

2

3

4

5

6

7

Musical staff for Triangle. The staff is in treble clef with a 2/4 time signature. It consists of eighth notes and quarter notes, numbered 1 through 7.

2

Cassa & Cym.

1

4

5

Musical staff for Cassa & Cymbal. The staff is in bass clef with a 2/4 time signature. It consists of eighth notes and quarter notes, numbered 1 through 5.

~~Drum~~

1 2 3 4 5 6 7

5 Triangle 1 2 3 4 5

6 7 8 9 1 2

3 4 5 6 7 8

C

Cassa & Cym. 1 2 1

1 2 3

1

1 3 1

rall

Nº 1 OPENING CHORUS

Timpani in C & G
 All^{to} Pesante
 Solo

1 2

3 4 5 6 7 8

A 14 **B** 14 **C** 2

tr *p* *f* *tr* *tr*

D 22 **E** *tr* *p* *cresc* *f*

2 3 4 5 6 7 8 1

1 2

ff *Change to E & A*

N^{os} 2-2^A & 3 TACET
N^o 4 RECIT SONG & CHORUS

WARNING: Honest sailor shudder
 CUE: Scaman deserves. Aye - Aye -

Allegretto *Recit*

In A & E *f* *My*

0 2

gallant crew good morning You do us proud Sir

Encore 2^d Verse

ff *2^d Verse*

32

For the Captain of the Pi - na - fore.

1^o 2^o

Change to C & G

N^{os} 4^A & 5 TACET

Drums

N°6 CHORUS

WARNING: Retire my daughter

CUE: My own thoughtful father

Andantino.

Timpani
in C & G

Bass Drum

12

N° 7 *All^{mo}*

A

9

Timp.

1 2 3 4 5 6

7 B 8 2 Triangle p

C 16 D 9 E 2 1 p

2 3 4 5 6 7 F 8 p

1 2 G 14 p p Segue

N° 8

Moderato

3 Segue

Now give three cheers I'll lead the way

Solo Side Drum p mf

Vivace ad lib. voce 12 II 14 J 19

Segue

Song 5 Verses. N° 9 SONG & CHORUS

Triangle 1 2 3 4 5 6 7

ENCORE 10

Coda Side Drum SOLO

N° 9^A-10 & 11 TACET segue.

N° 12 FINALE F

All^o Moderato

Timpani E^c & B^c 1 Recit 5 a tempo

Can I survive No no! its not to be ex - pected

All^o con brlo

8 [A] 13 *tr* [B]

Timpani p f

2 1

[B] *tr* 2

1 1 [C] 15 [D] 7 Recit 11

All^o Vivace

31 [E] 24

Oh joy, Oh rapture unforeseen f

Drums

F 2 C 13 **G** 12 5 **H** 13 **Moderato**

For-bear, nor carry out the scheme you've

planned! **All^o** 4 C **All^o con brio**

f G.C. & Cymb.

J

1 2 3 4 5 6 7 8

K

L

Vivace 15 **M** 11 **N**

O

rall

End of 1st Act.

ACT II
ENTR'ACTE

Tempo Mod^{to}

N° 13 TACET
N° 14 DECT

WARNING: I understand

CUE: Be prepared

Encore sym & 2nd Verse

N° 15 SONG-TACET
N° 16 TRIO

WARNING: Live one another

CUE: His rival's cause

Encore one Verse

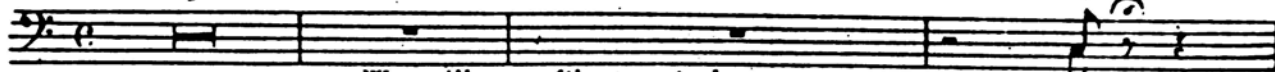
N° 17 TACET

8 **Drums**
N°18 CHORUS

WARNING: Short dialogue
CUE: Failed - Foiled - Foiled.

Moderato
7

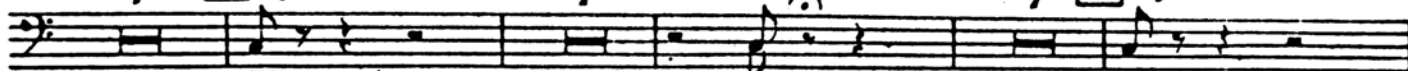
G C. & Cymb.



We will softly steal a way

7 **A** Cymb.

7 **B** Cymb.



pp

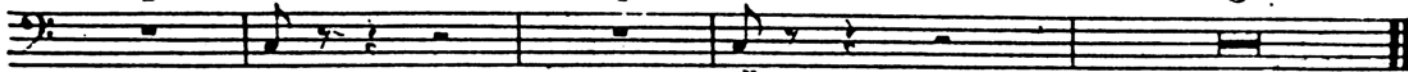
f

pp

1

1

5



p

p

Attacca

N°19 SCENA

In D & A

All^o con Spirito



Violine

ff

1:3

C

D

Encore

Tacet III

Sir Joseph



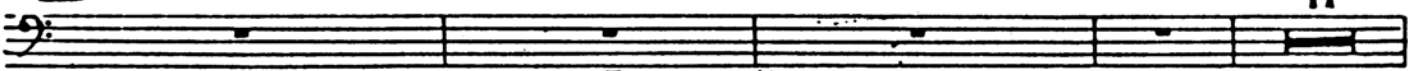
f

Change
to F & C

For i'll

L

II

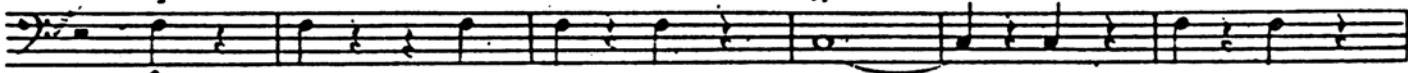


teach you all ere. long To re - frain from language strong

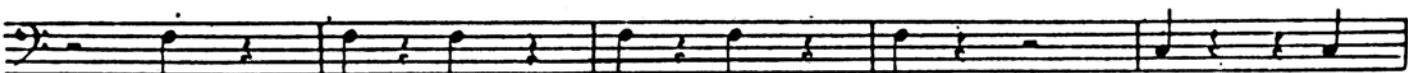
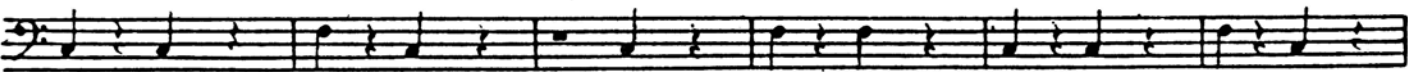
M

Timpani F & C

tr



f



tr

N° 20 OCTETT & CHORUS

WARNING: Seize him

CUE: Take him there at once

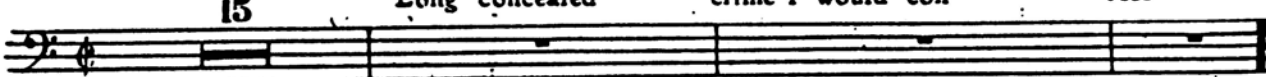
Allegretto Moderato

In C & G  Farewell my own :38

Tutti  Farewell my own *Solo tr* *pp* *f*

Brass 2  *tr* *pp* *Segue*


N° 20 1/2

15 Long concealed crime I would con - - fess 


Segue

N° 21 LEGEND

Timpani in E

 *tr* *pp* *f* *p*

24 Chorus  *tr* *p*

 *p*

N° 22 FINALE IF

WARNING: Oh, bliss! Oh, rapture

CUE: Same day united.

Timpani F & C

Musical staff for Timpani F & C. It features a bass clef and a 2/4 time signature. The staff contains several measures with notes and rests. Above the staff, the numbers 25, 28, 4, and a circled 4 are written. Below the staff, the instruction "Then give three cheers" is written.

G.C. & Cymb.

Musical staff for G.C. & Cymb. It features a bass clef and a 2/4 time signature. The staff contains several measures with notes and rests. Above the staff, the numbers 2, 16, 1, 2, 3, and 4 are written. Below the staff, the instruction *p* is written.

Musical staff for G.C. & Cymb. It features a bass clef and a 2/4 time signature. The staff contains several measures with notes and rests. Above the staff, the numbers 5, 6, 7, 8, and 4 are written.

Vivace

Musical staff for Timpani. It features a bass clef and a 2/4 time signature. The staff contains several measures with notes and rests. Above the staff, the numbers 2, 8, and 5 are written. Below the staff, the instruction *stringendo molto* is written.

tr

Musical staff for Timpani. It features a bass clef and a 2/4 time signature. The staff contains several measures with notes and rests. Above the staff, the instruction *tr* is written.

Musical staff for Timpani. It features a bass clef and a 2/4 time signature. The staff contains several measures with notes and rests.

Musical staff for Timpani. It features a bass clef and a 2/4 time signature. The staff contains several measures with notes and rests.

tr

Musical staff for Timpani. It features a bass clef and a 2/4 time signature. The staff contains several measures with notes and rests. Above the staff, the instruction *tr* is written.

END OF OPERA