

# Trois Noë

*faciles et progressifs*

pour

*deux Violoncelles*

Composés par

**BERN. BREUHER.**

Op. 9. Liv. II

Prix 3 Frs 50 C<sup>s</sup>

137

*Bonn chez M. Simrock ?*

Propriété de l'éditeur.

2979.

2977.

## TROIS DUOS par B. BREUER.

Bon chez N. Simrock.

## DUO I.

Allegro  
moderato.Violoncello 2<sup>de</sup>

*p*  
*mf*  
*cresc* *p* *cresc*  
*f*  
*f* *mol*  
*f*  
*f* *p*  
*cresc* *f*  
*deces* *p*

Violoncello 2<sup>do</sup> musical score, page 5. The score consists of 12 staves of music in bass clef with a key signature of two flats. It includes various dynamics such as *f*, *p*, *mf*, *cresc.*, *decres.*, and *p dol*, along with performance markings like accents and slurs.

2.077.

*Larghetto.*

*Allegretto.*

2977.

Violoncello 2<sup>do</sup> musical score page 5. The score is written in bass clef with a key signature of two flats (B-flat and E-flat) and a 3/4 time signature. It consists of 13 staves of music. The dynamics range from *p* (piano) to *f* (forte), with markings for *cresc.* (crescendo), *mf* (mezzo-forte), and *decresc.* (decrescendo). The music features various rhythmic patterns, including eighth and sixteenth notes, and rests. There are several first endings marked with a '1' and a plus sign. The score concludes with a double bar line and a repeat sign.

9.077.

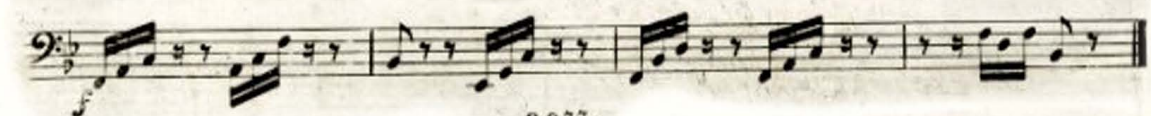
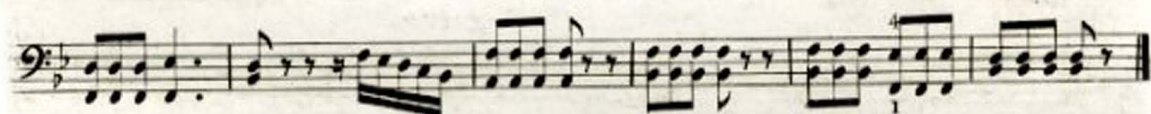


This page of a musical score for Violoncello 2<sup>do</sup> contains 11 staves of music. The notation includes various rhythmic patterns, dynamic markings, and articulation symbols. The key signature is one flat (B-flat), and the time signature is 2/4. The score features a variety of textures, including rapid sixteenth-note passages and sustained chords. Dynamic markings include *pp*, *crca*, *pf*, *f*, *p*, and *pp*. Articulation symbols such as accents (>) and slurs are used throughout. The piece concludes with a final chord marked *pp* and a fermata.

2977.

Tema  
con  
Variazioni.

Andante.





## Adagio.

Var. 5. *fp* *mf* *cresc.*

Tempo 1<sup>mo</sup>.

Var. 6. *mf* *p*

## Allegretto.

*cresc.* *f* *fp* *ritard.* *f* *p* *tempo.* *calando* *fp* *f* *tempo.*



This page of a musical score for the second cello part contains ten systems of music. Each system consists of a bass clef staff and a higher staff, likely for the first cello. The music is written in a key with two sharps (F# and C#) and a 2/4 time signature. The score includes various dynamic markings such as *mf*, *f*, *p*, and *ff*, as well as performance instructions like *crec.* (crescendo) and *tr.* (trill). The notation features a variety of rhythmic patterns, including sixteenth and thirty-second notes, and rests. The page concludes with a double bar line and the number 2077.

2077.

Andante  
sostenuto.

Musical score for Violoncello 2<sup>do</sup>, Andante sostenuto. The score consists of 11 staves. The first staff is in bass clef with a 6/8 time signature. The tempo is marked "Andante sostenuto." The dynamics range from *p* (piano) to *f* (forte). The score includes various musical notations such as slurs, accents, and fingerings. The first staff ends with a double bar line. The second staff begins with a *cresc.* marking. The third staff has a *f* dynamic. The fourth staff has a *cresc.* marking. The fifth staff has a *p* dynamic. The sixth staff has a *cresc.* marking. The seventh staff has a *p* dynamic. The eighth staff has a *cresc.* marking. The ninth staff has a *p* dynamic. The tenth staff has a *cresc.* marking. The eleventh staff has a *p* dynamic.

Allegro ma  
non troppo.

Musical score for Violoncello 2<sup>do</sup>, Allegro ma non troppo. The score consists of 4 staves. The first staff is in bass clef with a 2/4 time signature. The tempo is marked "Allegro ma non troppo." The dynamics range from *p* (piano) to *f* (forte). The score includes various musical notations such as slurs, accents, and fingerings. The first staff ends with a double bar line. The second staff begins with a *cresc.* marking. The third staff has a *f* dynamic. The fourth staff has a *p* dynamic.

