

EL SEÑOR JOAQUÍN

Balada y Alborada

ARCHIVO DE MÚSICA
OSCAR PEÑA

Viola.

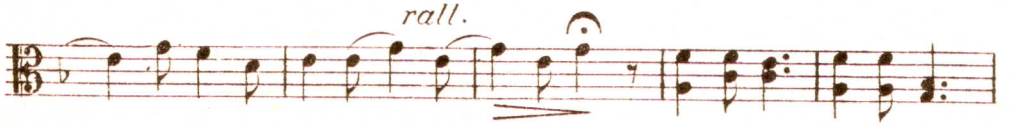
M. F. CABALLERO.

Andante lento.

The musical score for Viola is written in bass clef with a key signature of two flats (B-flat and E-flat) and a 6/8 time signature. It begins with a dynamic marking of *f* (forte) and a hairpin crescendo leading to a *p* (piano) dynamic. The tempo is marked 'Andante lento'. The score consists of nine staves of music. The first staff contains the initial melodic line with slurs and accents. The second staff continues the melody. The third staff includes fingerings 1 through 7 and rests. The fourth staff continues the melody with slurs. The fifth staff continues the melody. The sixth staff includes dynamic markings *rall.* (ritardando), *rall.* (ritardando), and *a tempo* (return to tempo), along with a *p* dynamic. The seventh staff includes a *pp* (pianissimo) dynamic and a *mf* (mezzo-forte) dynamic. The eighth staff includes a *rall.* marking and ends with a double bar line and a 2/4 time signature. The final staff is marked 'Allegretto' and begins with a *p* dynamic.



Andante lento. (1º tpo.)



pp

Solo.
V. S.

Viola.

The musical score for Viola consists of 18 measures. The first six measures are in treble clef with a key signature of one flat (B-flat). The first measure is marked *mf*. The first six measures feature a melodic line with various rhythmic patterns, including eighth and sixteenth notes, and some slurs. The seventh measure is marked *f*. The last three measures of this section are marked *animando e cresc.*. The final three measures (measures 15-18) are in bass clef with a key signature of one flat. They are marked *Andante lento.* and include dynamic markings *f* and *ff*. The final measure is marked *rall.* and features a deceleration hairpin.