

Johann Wilhelm Furchheim

c. 1635–1682

Suite à 5

Düben collection IMHS 3:12

Arranged for recorders and basso continuo

by

Annette Mondrup & Christian Mondrup

Treble 1

©2001 Annette Mondrup (annette-mondrup@mail.tele.dk), Christian Mondrup (scancm@biobase.dk)
Johan Tufvesson (tuben@lysator.liu.se)

Typeset with M-Tx, Non-commercial copying welcome

Johann Wilhelm Furchheim (c. 1635–1682)

Præludium

Musical score for Præludium in C major, Treble clef, common time. The piece consists of 13 measures. The first line contains measures 1-6, the second line measures 7-12, and the third line measure 13.

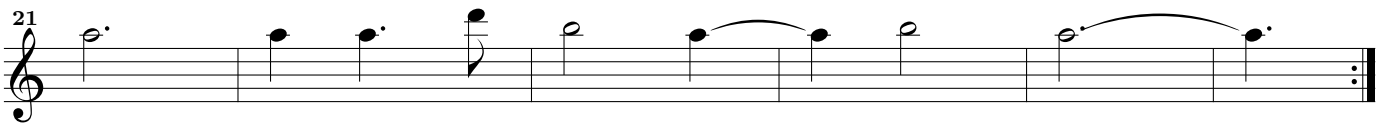
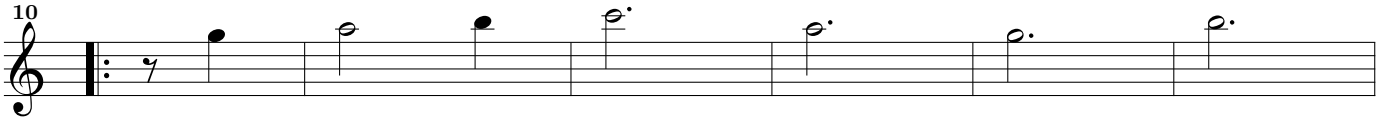
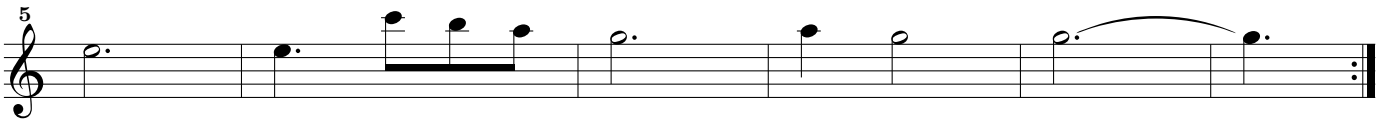
Alemande

Musical score for Alemande in C major, Treble clef, common time. The piece consists of 14 measures. The first line contains measures 1-3, the second line measures 4-6, the third line measures 7-10, the fourth line measures 11-13, and the fifth line measure 14.

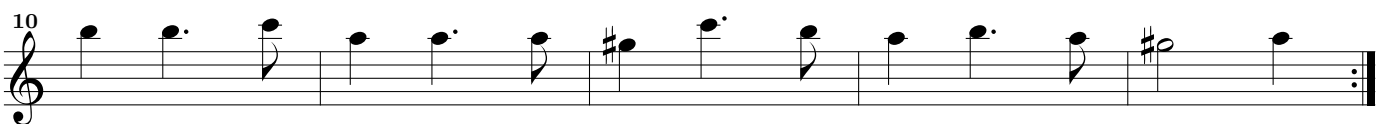
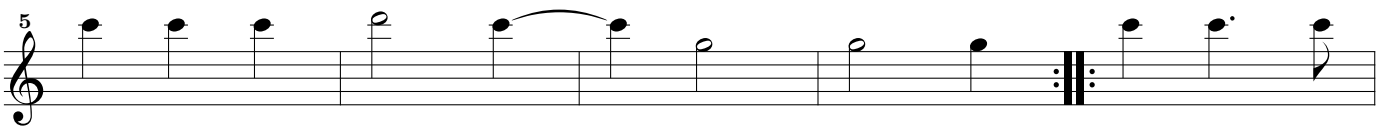
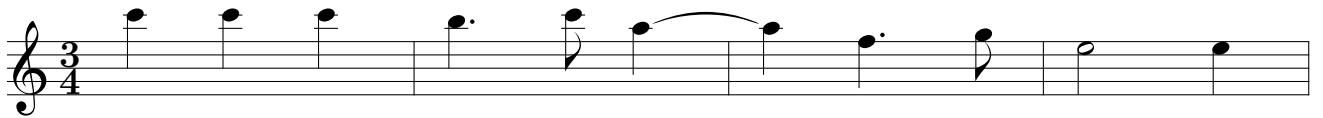
Courant

Treble

3



Saraband



Gigue

