

HARMONIA
INSTRUMENTALIS

Duobus Violin. & Fagotto

Cum Basso continuo

ELABORATA ET CONCINNATA:

REVERENDISSIMO DOMINO,

D. IOANNI

MELCHIORI,

EPISCOPO DOMITIOPOLITANO, EMI-
NENTISSIMI ET REVERENDISSIMI PRINCIPIS

Herbipolensis in Pontificalibus & Spiritualibus Vicario

Generali, SS. Theol. Doct. Nec non Eccl. Colleg.

in Novo Monasterio Decano

2

PHILIPPO FRIDERICO BUCHNERO

In Aula Moguntinâ & Herbipolensi Capella

Magistro

Chori Cathed. DEDICATA. Ecclesia Argenti.



OPVS - QVINTVM.

VIOLIN: II.

H E R B I P O L I

Sumptibus Authoris

&

Typis Sylvestri Galsner.

REVERENDISSIME DOMINE, DOMINE GRATIOSE.



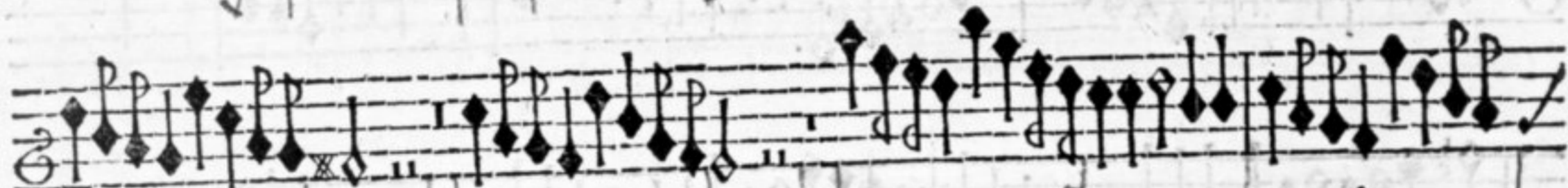
*I*nstrumentalis hæc Harmonia [qualis qualis] sic multis placuit scripta, ut impressam crederem paucis displicituram. Verùm & usus docuit, & temporis ratio suavit, ut patronum illi quærerem, ubi vix quidquam in publico tutum est, cui tutor deest quem alij in publico vereantur. Non alterius tamen, quàm tuam REVERENDISSIME DOMINE, si liceat, libet huic Harmonia tutelam implorare. Nec aliter licet: sic enim & Musicam divino cultui aptatam amore foves, & indigno mihi hucusque faves, ut nisi ingratus audire velim, alteri præterquam tibi offerre non ausim. Quod itaque dum facio, hoc unum obsecro, sic Harmonicum hoc opus in tua admittas, ut me, immerentem licet, ex tuis non dimittas. Sic ex animo voveo. Herbipoli Calend. Maij, Anno M. DC. LXIV.

Reverendis. & Gratiolæ Dominationi Tuæ

Devotissimus

Philippus Fridericus Buchnerus.

Sonata I.



is
n.
o-
ft,
e-
li-
er
ni-
e
oc
ni-

rus.

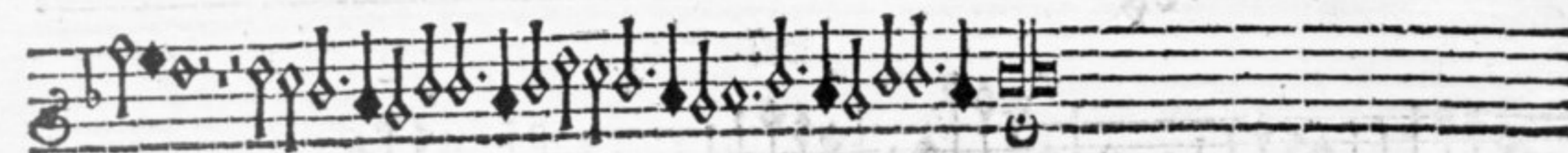
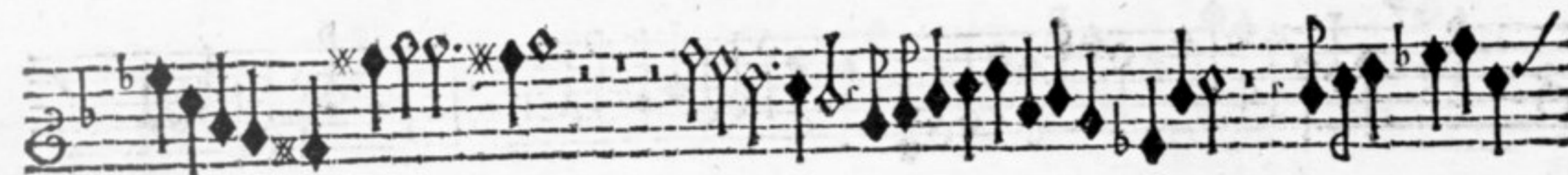
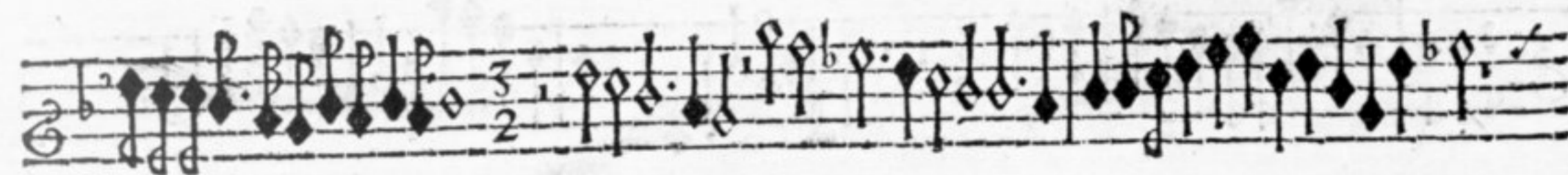
Sonata II.

This page contains a handwritten musical score for a piece titled "Sonata II." The score is written on ten staves, each beginning with a treble clef and a key signature of one flat (F major or D minor). The time signature is 3/2. The notation includes various note values, rests, and dynamic markings such as *ppp*, *p*, and *f*. There are also articulation marks like accents and slurs. The music is dense and appears to be a single melodic line. The final staff ends with a double bar line and a repeat sign. The bottom of the page shows several empty staves.

Sonata III.

A handwritten musical score for a piece titled "Sonata III." The score is written on ten staves of music, each in treble clef and 3/2 time. The notation includes various rhythmic values such as eighth and sixteenth notes, rests, and dynamic markings like "p" (piano) and "pp" (pianissimo). There are also some markings that look like "x" or "u" on the notes. The music is arranged in a single melodic line. The first staff begins with a 3/2 time signature. The piece concludes with a double bar line and a repeat sign. At the bottom of the page, there is a small marking "A 2".

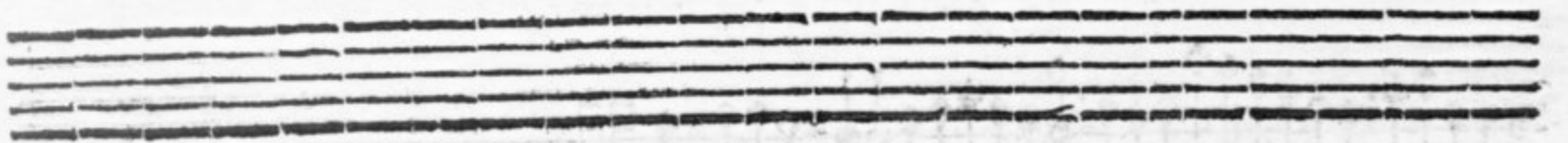
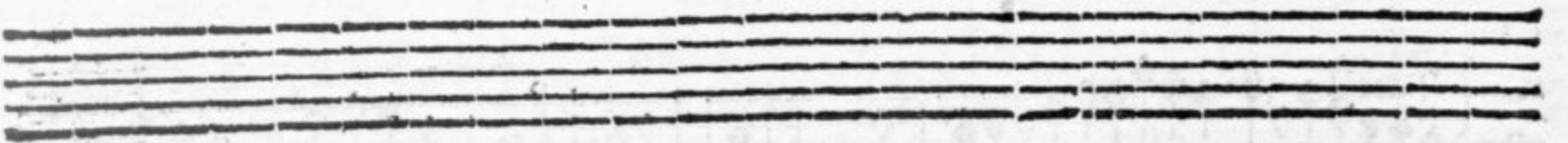
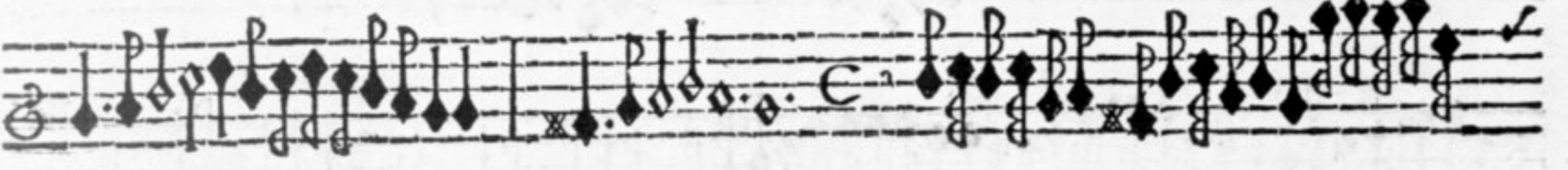
Sonata I V.



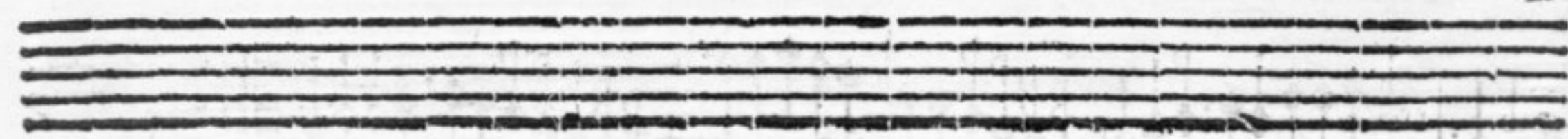
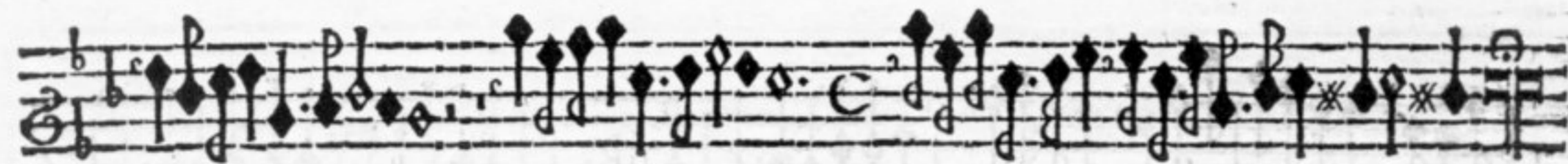
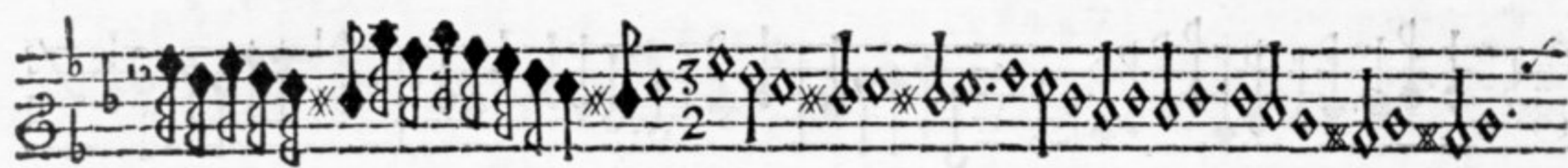
I Sonata V.



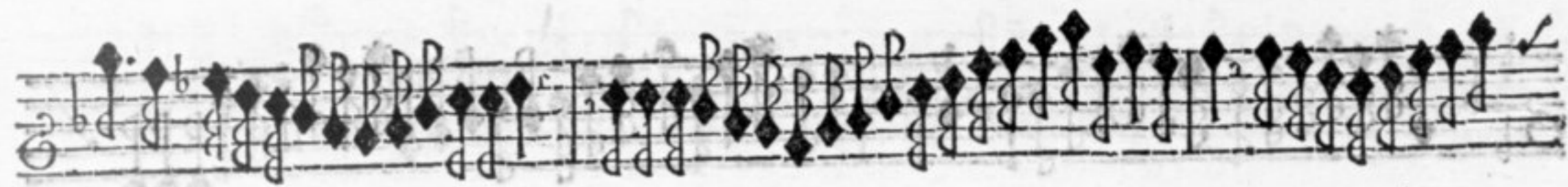
Sonata VI.



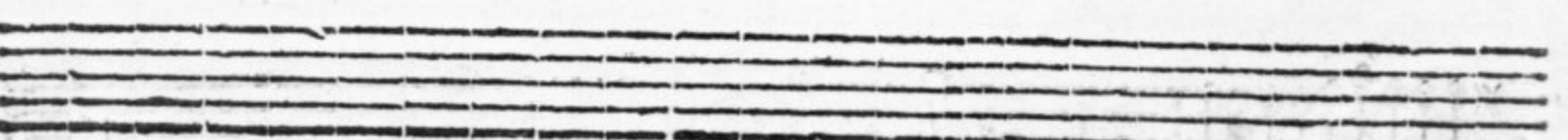
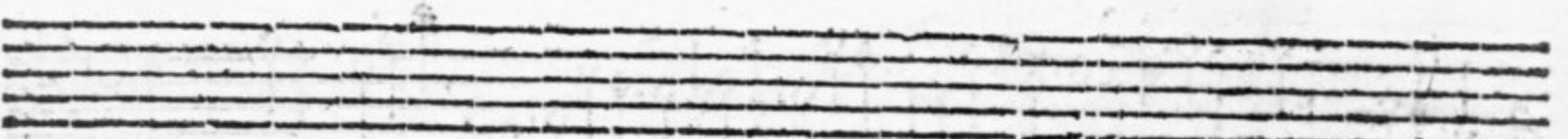
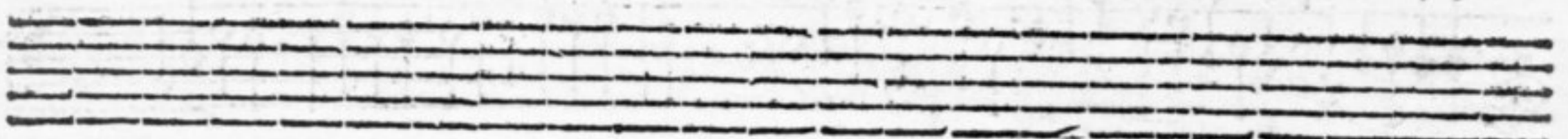
Sonata VII.



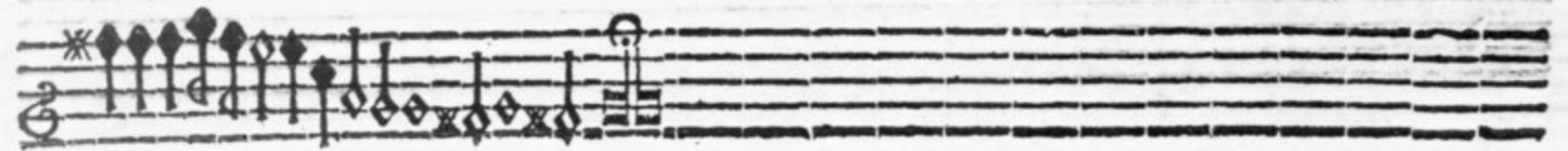
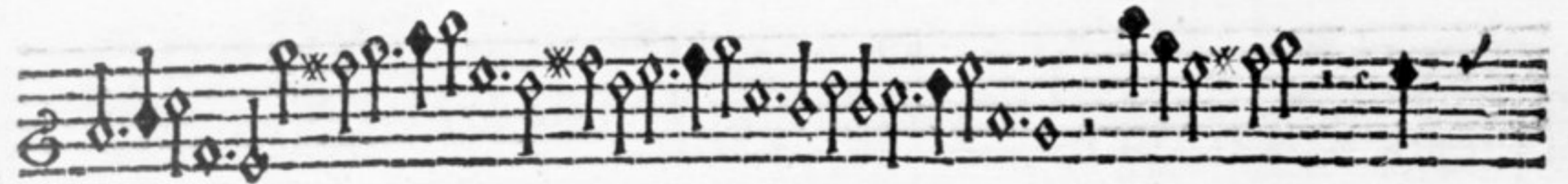
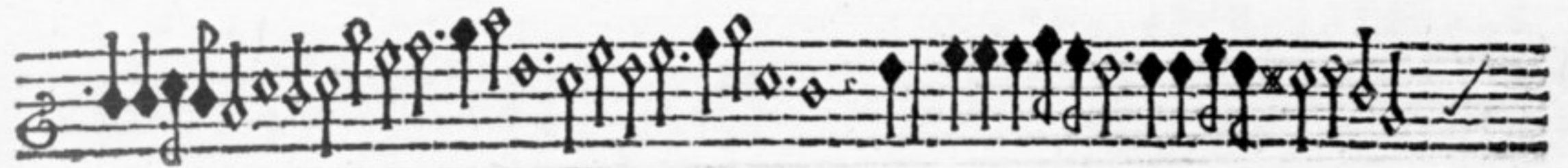
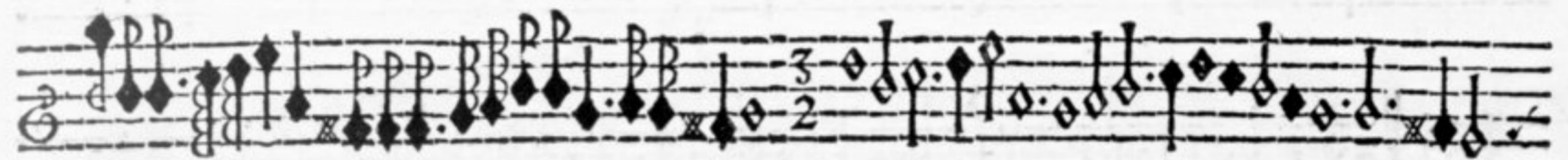
Sonata VIII.



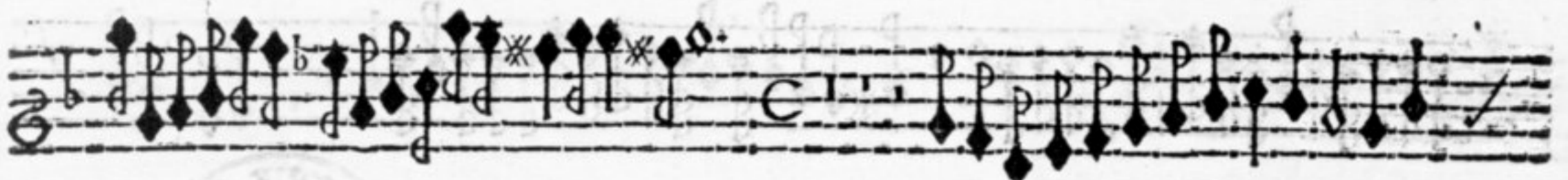
Sonata IX.



Sonata X.



Sonata XI.



Sonata XII.

