

Stamitz, Johann (1717-1757)

BRD DS Mus.ms 1029/8a

Sinfonia/à/2.Violini/Viola/et/Basso/del Sig<sup>ro</sup> Steinmetz/  
[Incipit]/ (Es-dur)

Ms. ca.1750.

34 x 22 cm.

5 St.:vl 1,2,vla,b,vlne. 1,1,1,2,1 Bl.

Incipit im Titel von der Hand Graupners.

Incipit vgl.Mus.ms 1029/8.

Nicht im Themat.Kat.DTB.

*del Sigro Steinmetz*

Landes-Bibliothek  
**Mus. Ms.**  
**1029**  
Bd. 8a  
Darmstadt

Mus 1029 Nr 8a

4

fol (6)

8a.

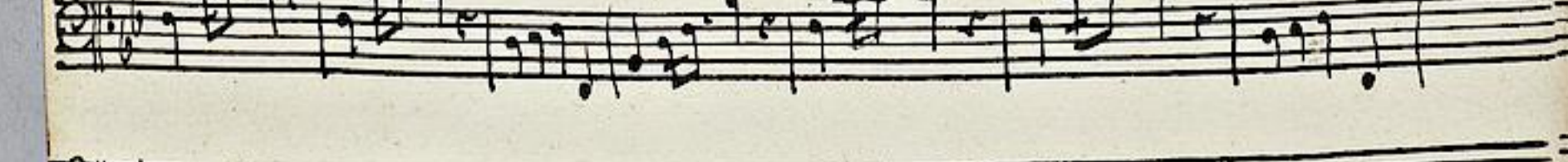
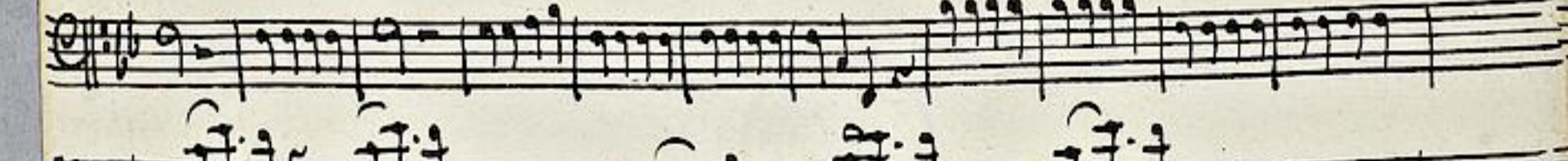
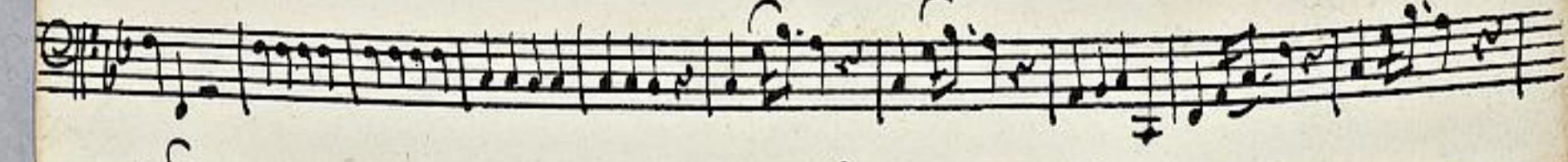
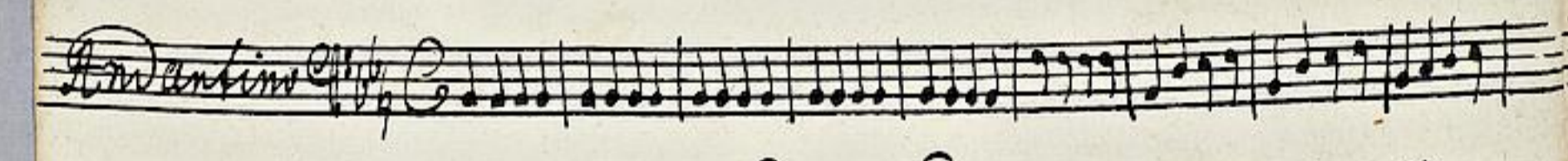
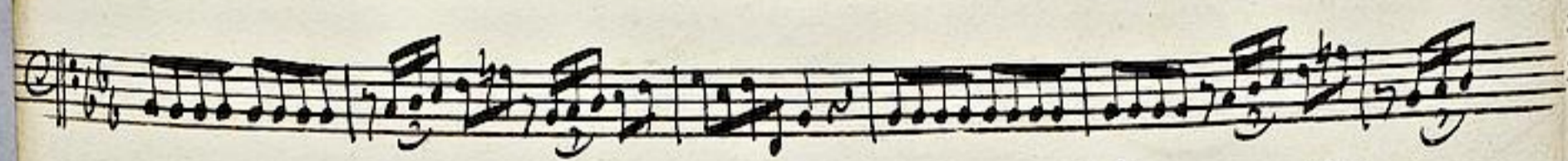
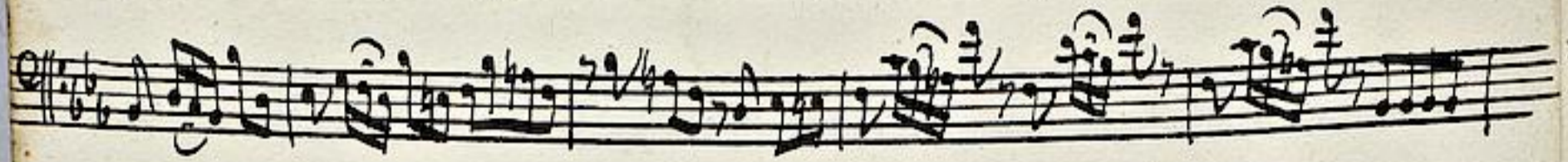
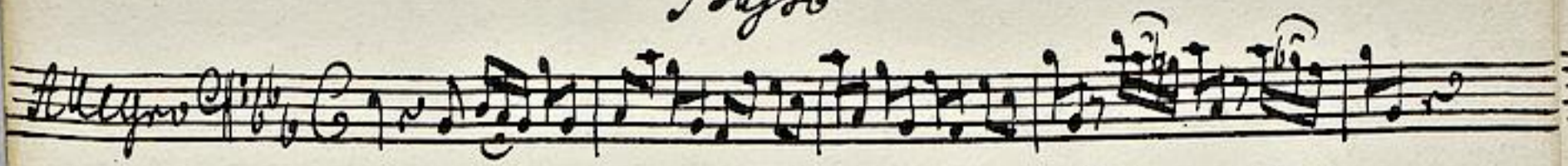
Sinfonia  
à  
2. Violini  
Viola  
et  
Basso  
e Violone

del Signore Steinmetz

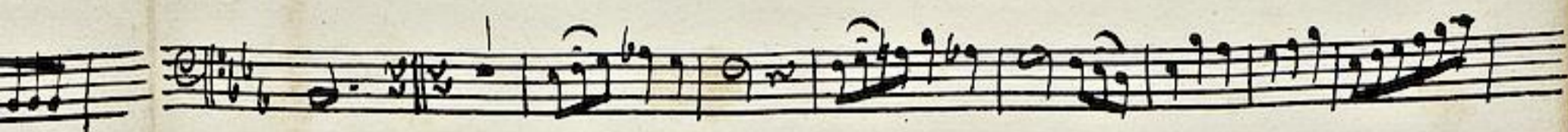


24.

Basso




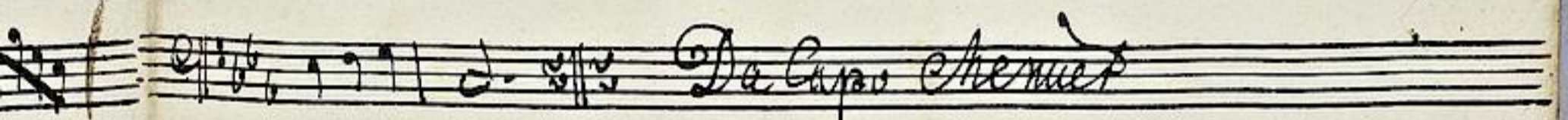
*Menuet* 

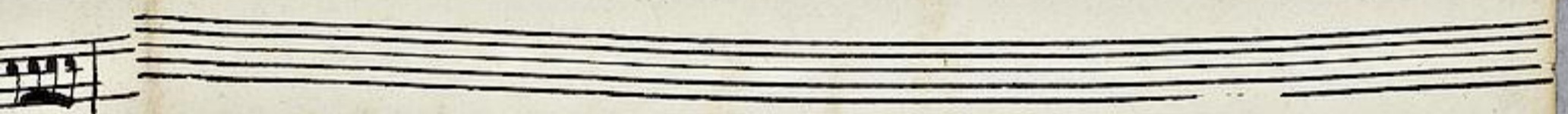


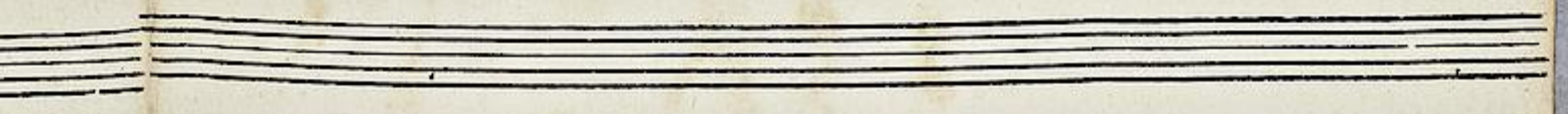


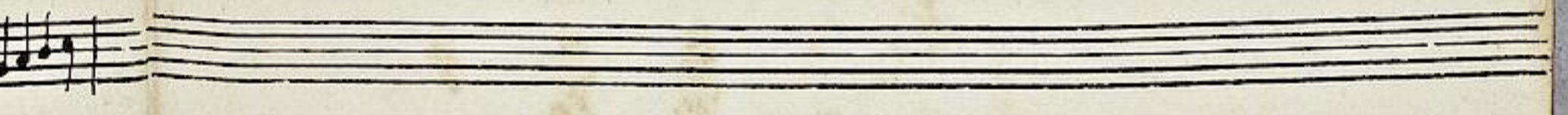
*Trio* 



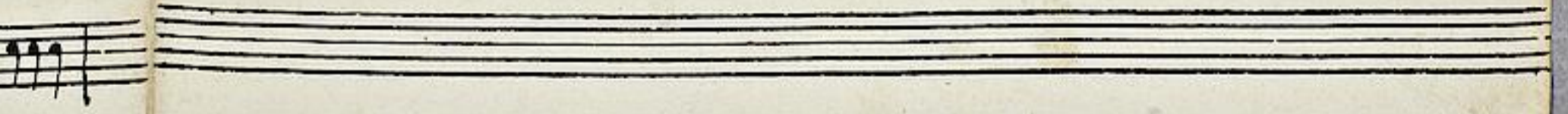
 *Da Capo Menuet*

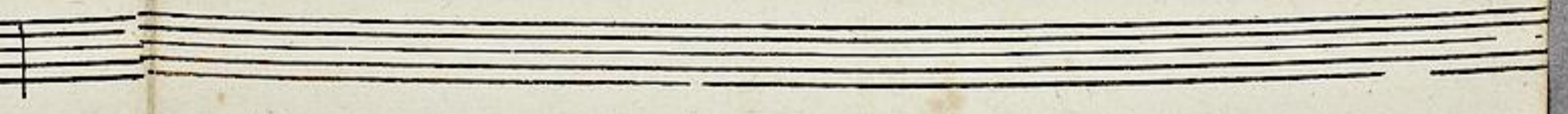




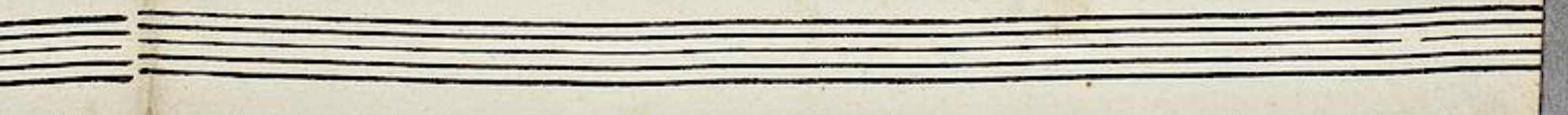












1029/8a

Violino I<sup>mo</sup>

1

Allegro

Handwritten musical score for Violino I, first page. The score consists of 11 staves of music in G major, 2/4 time. The tempo is marked 'Allegro'. The music features a melodic line with various ornaments and a rhythmic accompaniment. Dynamics include 'p.' (piano) and 'f.' (forte). The score ends with a double bar line and repeat dots.



*Andantino*

*Menuet*

*Trio*

*Menuet Da Capo*

The image shows a page of handwritten musical notation on aged paper. It contains four distinct sections of music, each starting with a section title. The first section, 'Andantino', consists of seven staves of music. The second section, 'Menuet', consists of three staves. The third section, 'Trio', consists of one staff. The fourth section, 'Menuet Da Capo', consists of one staff. The notation includes treble clefs, a key signature of one flat (B-flat), and a 4/4 time signature. The handwriting is in dark ink and appears to be from the 18th or 19th century.

1029/8a

Violino 2<sup>o</sup>

2

Handwritten musical score for Violino 2<sup>o</sup>. The score is written on 14 staves. The first staff begins with the tempo marking "Allegro" and the time signature "C". The key signature is two flats (B-flat and E-flat). The music consists of a single melodic line with various rhythmic patterns, including eighth and sixteenth notes, and rests. There are several dynamic markings "p." (piano) throughout the piece. The notation is in a clear, legible hand.



*Andantino*

*Allegretto*

*Fresco*

*Allegretto Balcan*





1029/8a

Alto viola

3

Allegro

Andantino



*Cheruel* ||  $\text{b}^{\flat}\text{b}^{\flat}$   $\frac{3}{4}$

*Trio* ||  $\text{b}^{\flat}\text{b}^{\flat}$   $\frac{3}{4}$

*Cheruel Balays*

*Allegro.*

1029/8a

*Violone.*

6

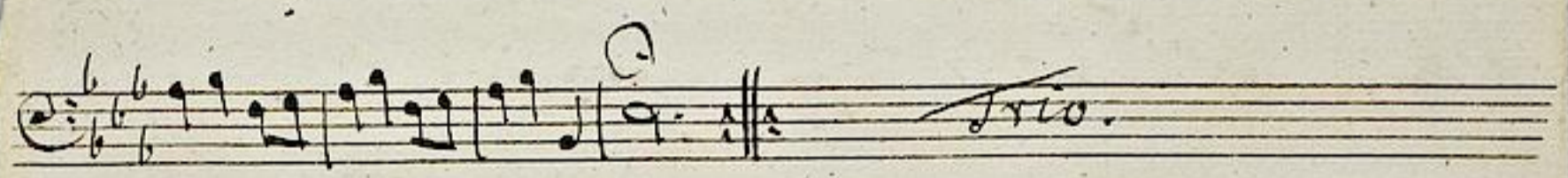
*Andantio.*

*Volti.*




*Menuet.* 





*Trio.* 



*Menuet*  
*Da Capo*  