

No 63.

[Sinfonia, A.]

Sinfonia in A^{ma} - 34.
a 3. voci.

Violino 1 ^o	_____	n. 11.
Violino 2 ^o	_____	n. 1.
Basso	_____	n. 11.

~~di Andrea Fani~~

di Andrea Fani.

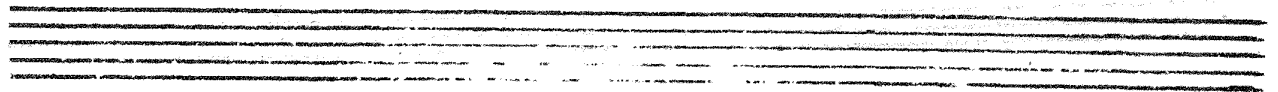
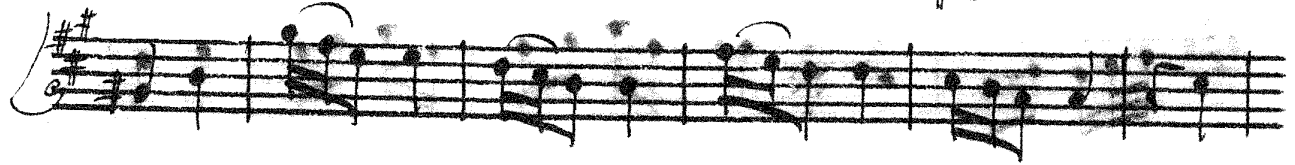
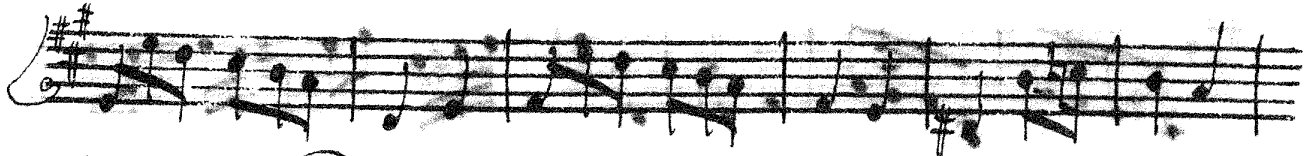
Sinfonie

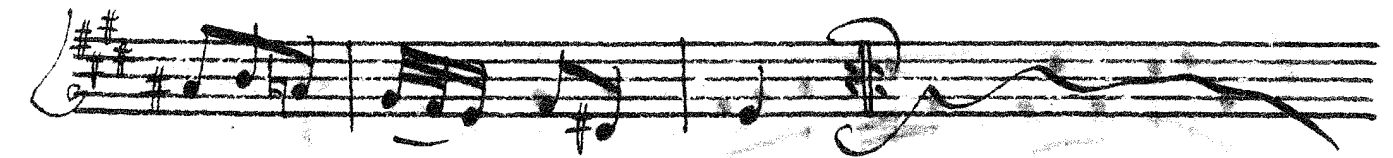
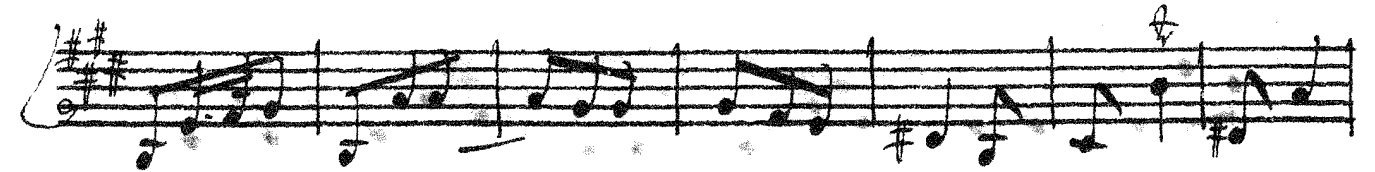
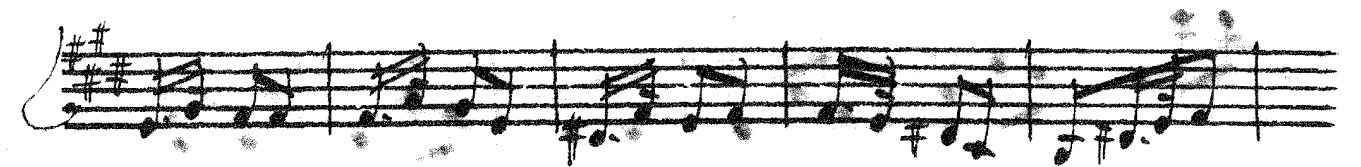
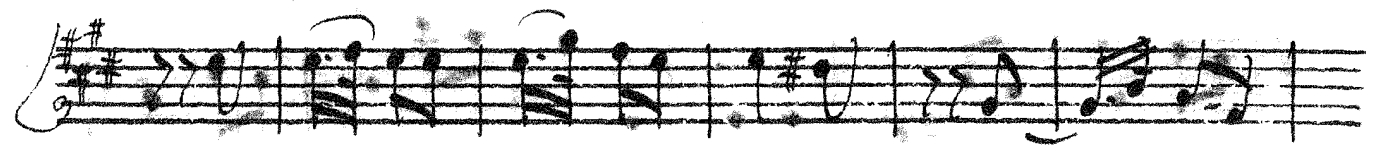
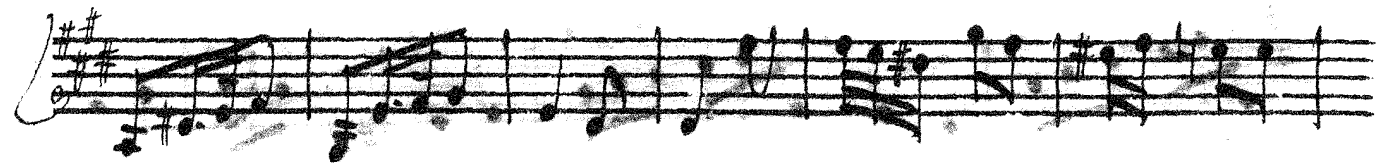
Violino Primo

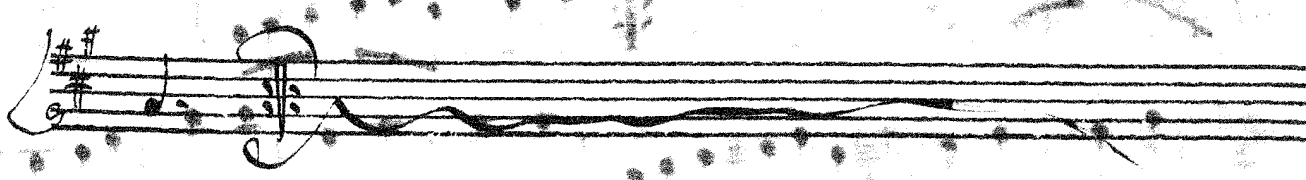
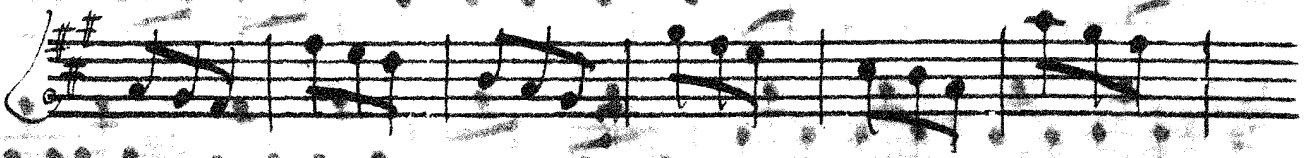
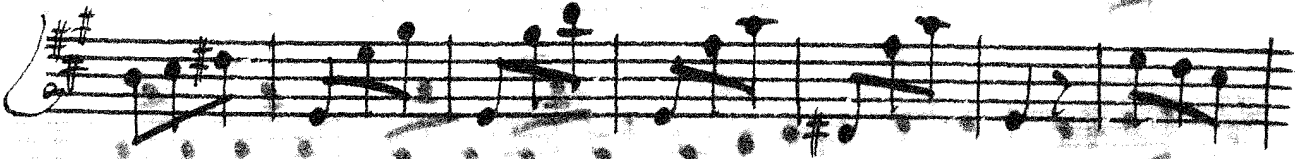
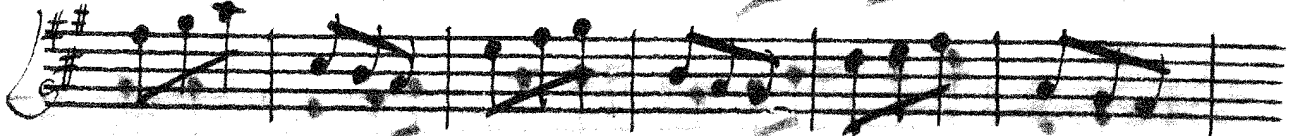
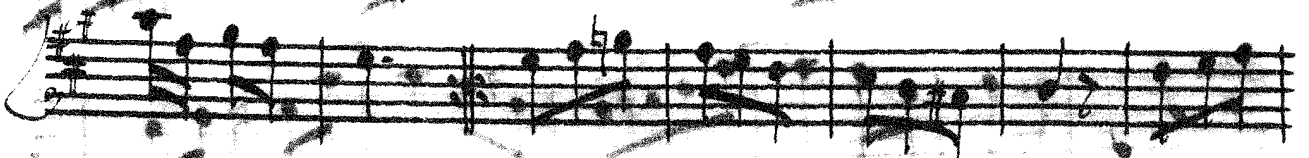
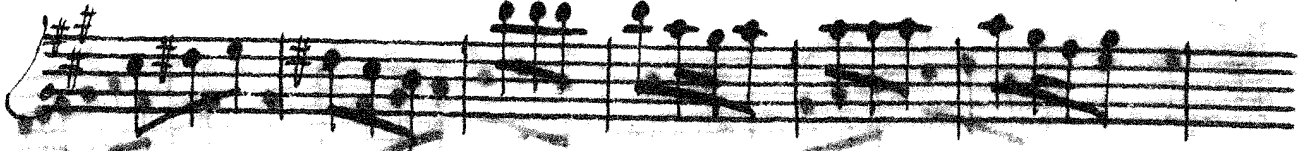
Zani, A. Op. 2
L'Espresso, A. 7

The image displays a handwritten musical score for the first violin part of a symphony. The score is written on 12 staves, each beginning with a treble clef, a key signature of one sharp (F#), and a 3/4 time signature. The notation includes various rhythmic values such as eighth and sixteenth notes, as well as rests. Slurs and phrasing marks are used throughout to indicate musical phrases. The handwriting is fluid and characteristic of a composer's draft. The paper shows signs of age, with some foxing and staining, particularly in the lower half of the page.







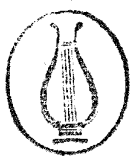


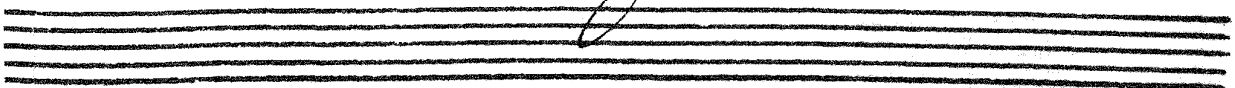
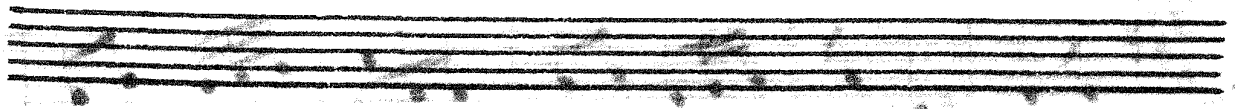
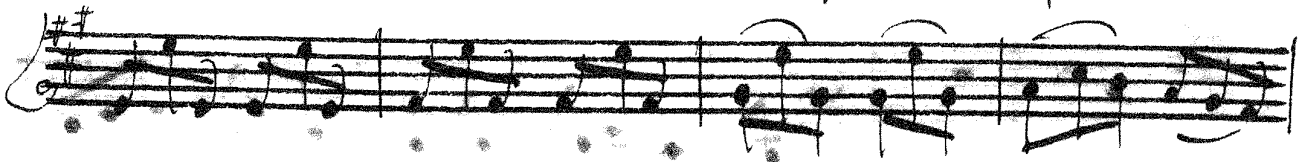
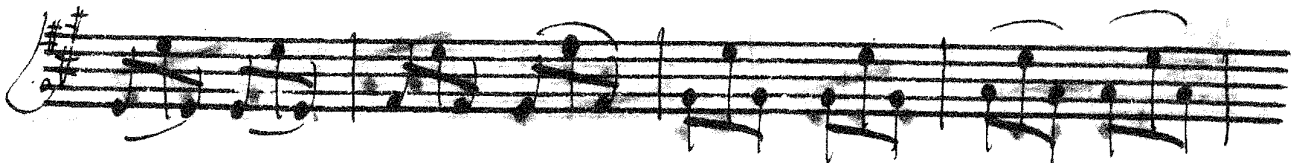
Sinfonie

Violino Secondo

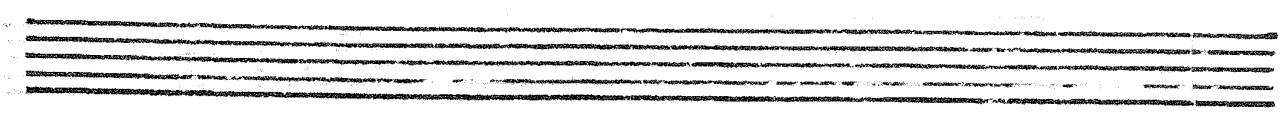
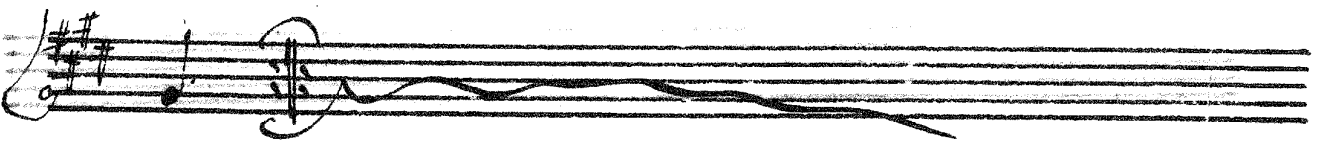
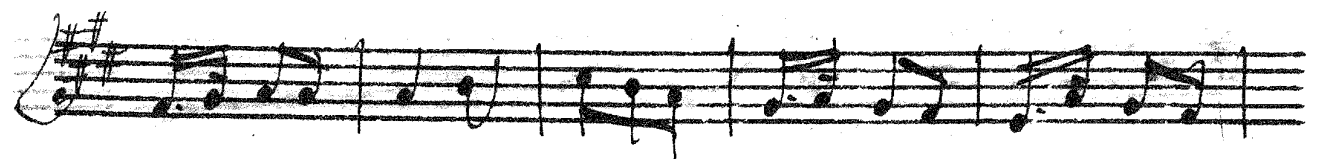
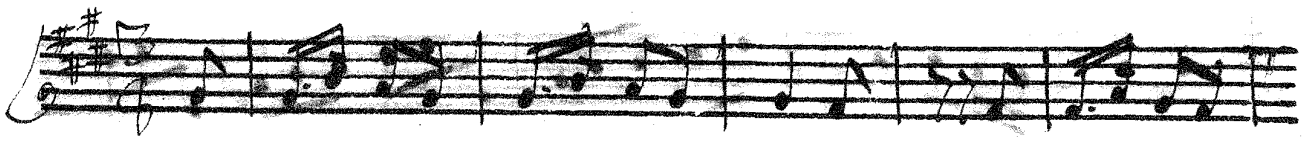
Op. 12
L. 1
Sinfonia

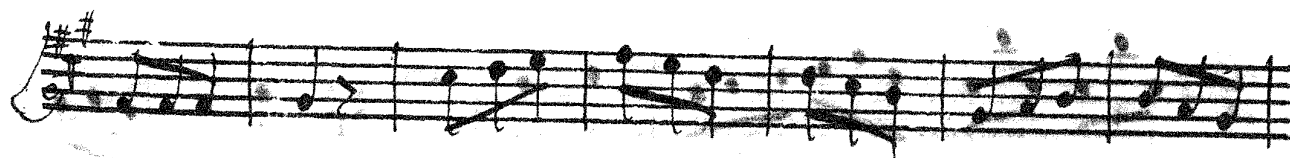
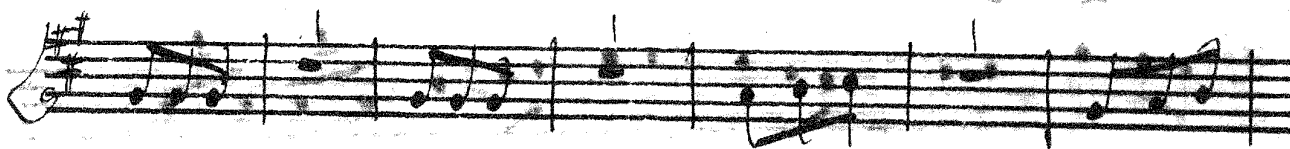
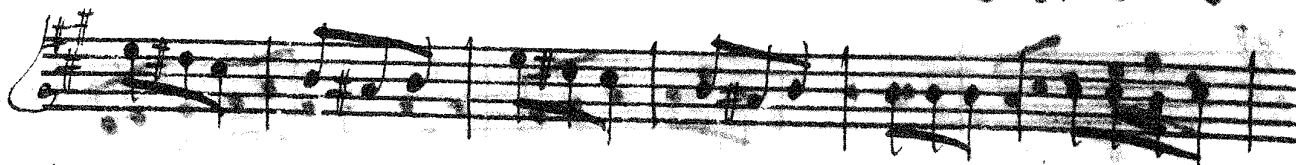
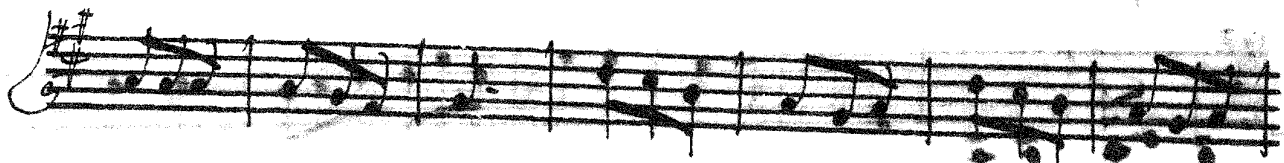
The image displays a handwritten musical score for the second violin part of a symphony. The score is written on 12 staves, each beginning with a treble clef, a key signature of two sharps (F# and C#), and a 3/4 time signature. The notation includes various rhythmic values such as eighth and sixteenth notes, as well as rests and slurs. The handwriting is fluid and characteristic of a composer's draft. The music appears to be in a classical style, with a focus on melodic lines and harmonic support.





Allegretto

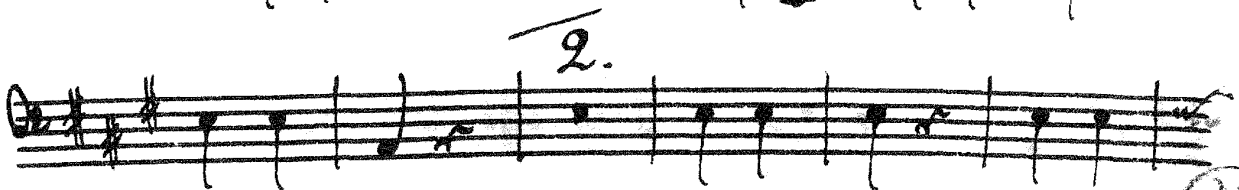
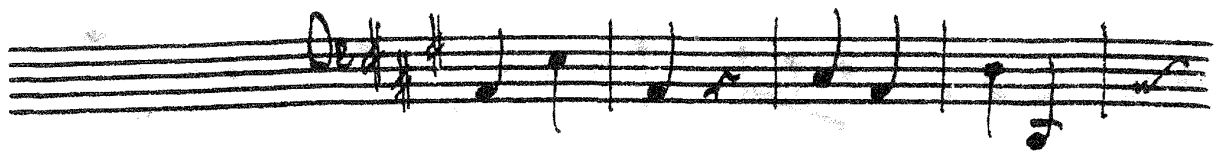
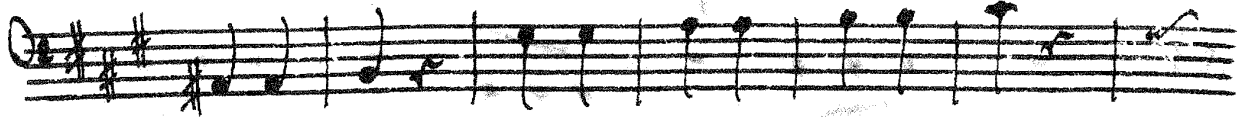


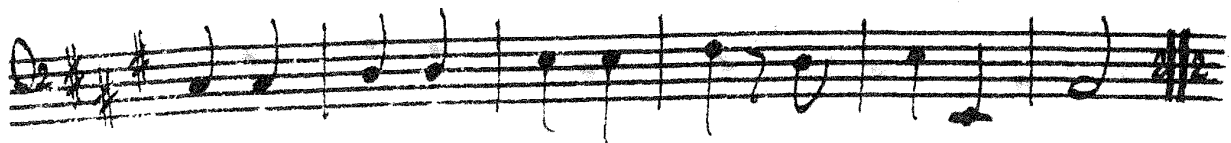
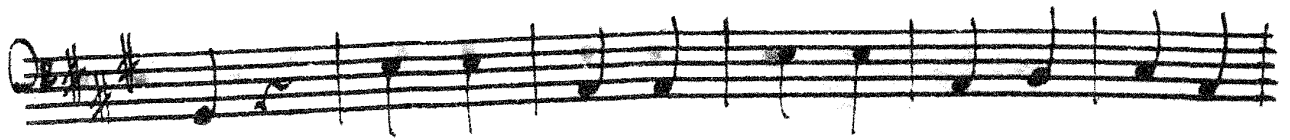


Sinfonia.

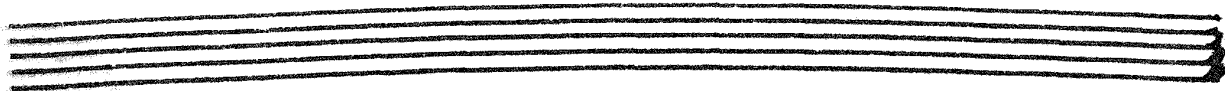
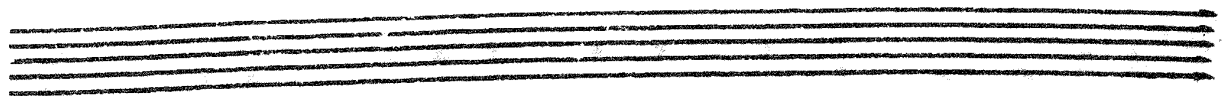
Basso.

Zani, A. Op. 10
[Sinfonia, N.]





Si Solci



Largo *Orchestra* 3/8

