

14 Hl.

136.



209

Enc. 11'

CONCERTO.

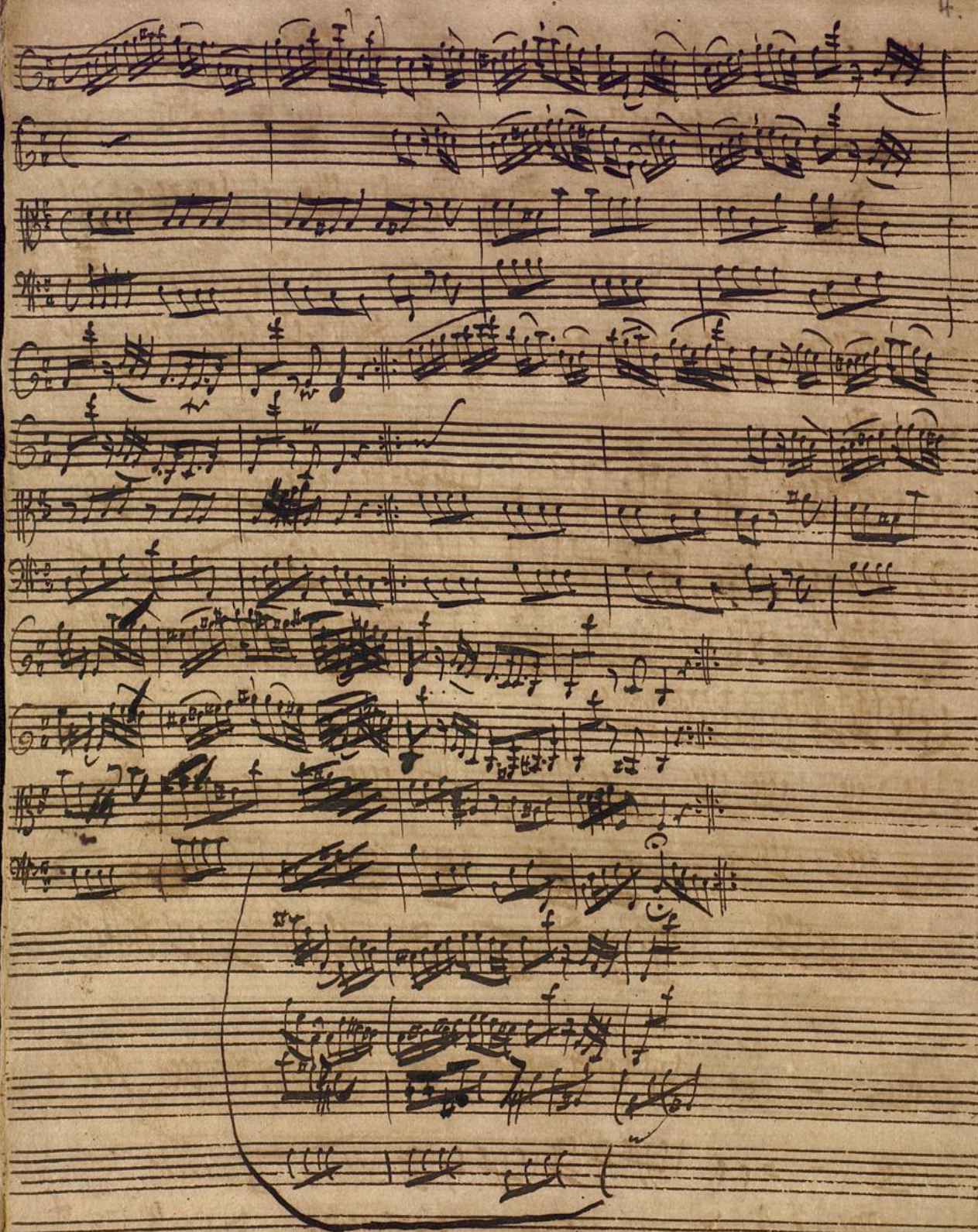
Molter



Handwritten musical score for "Parini" by G. C. The score is written on 15 staves. The first staff is labeled "G. C." and "Parini". The music is in G major and 3/4 time. The score includes various musical notations such as notes, rests, and dynamic markings. A circular library stamp is visible in the top left corner.

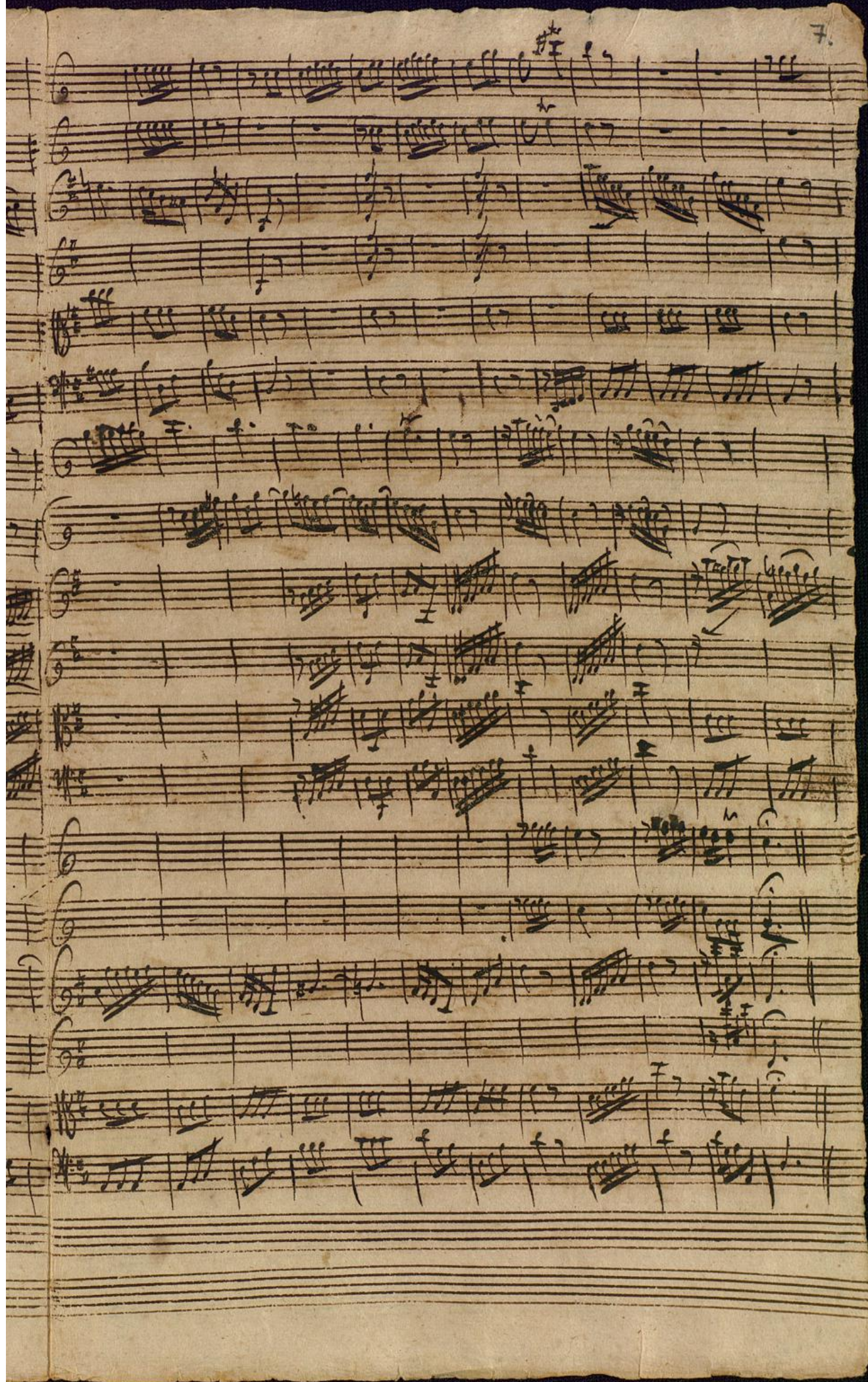


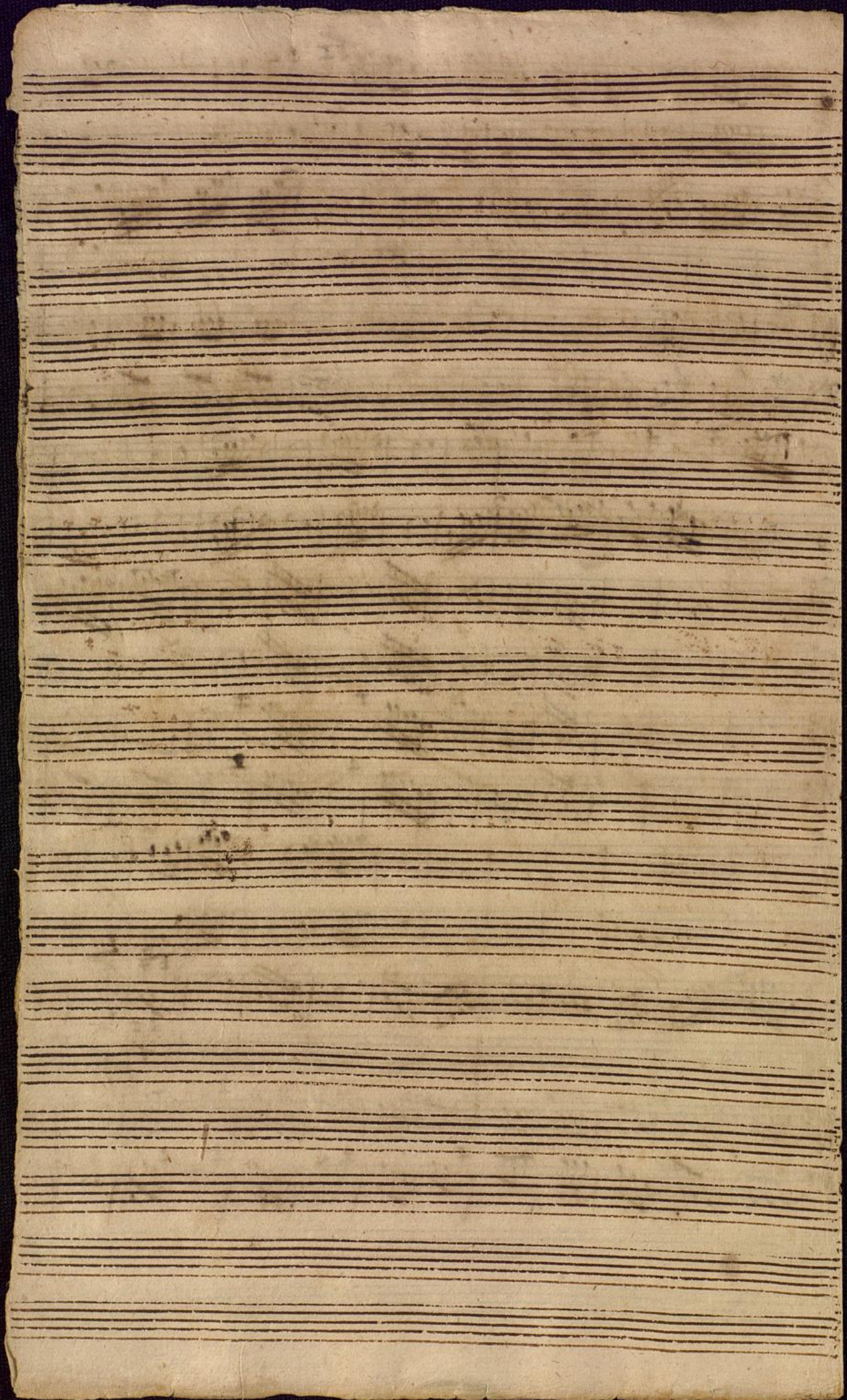






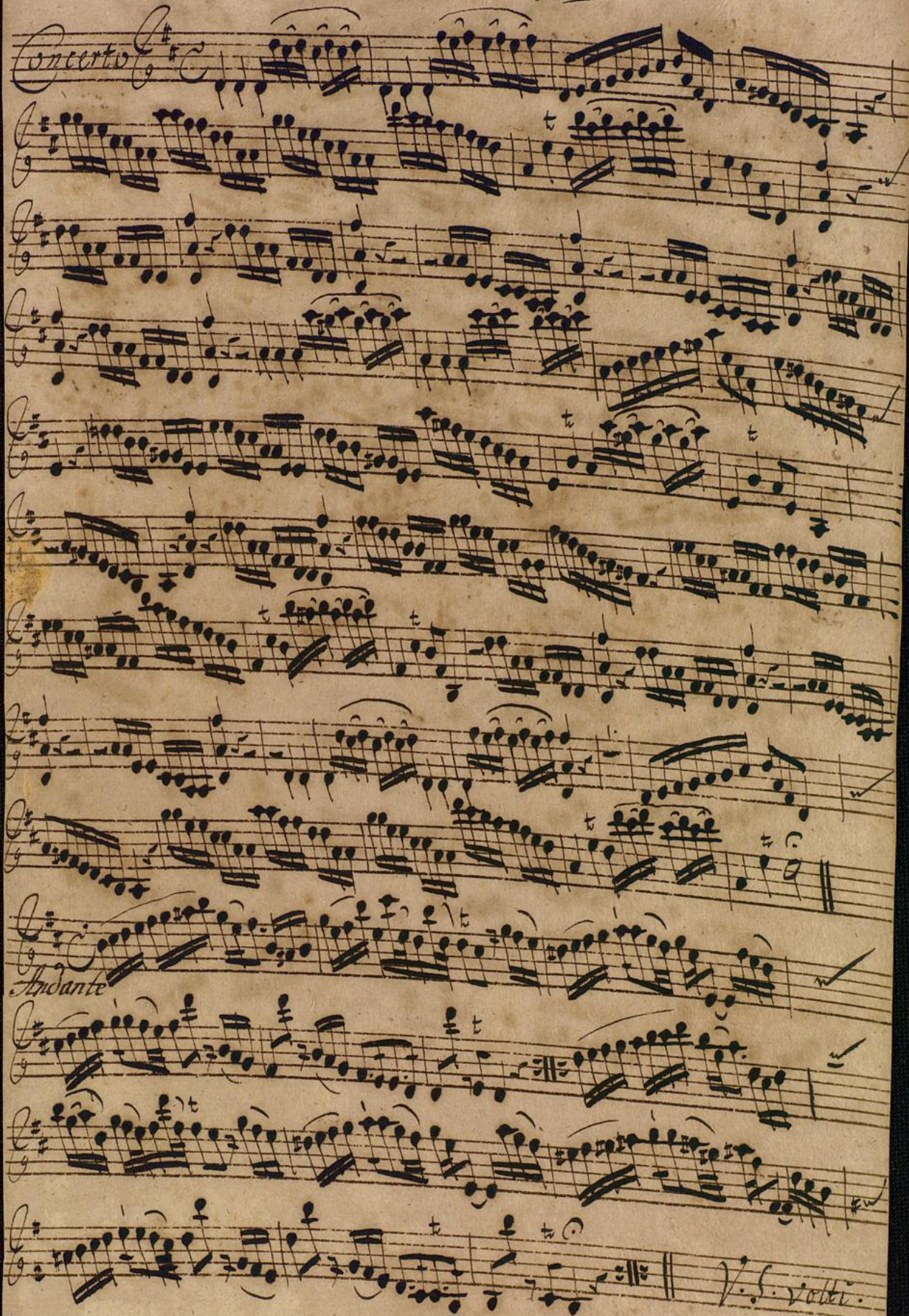


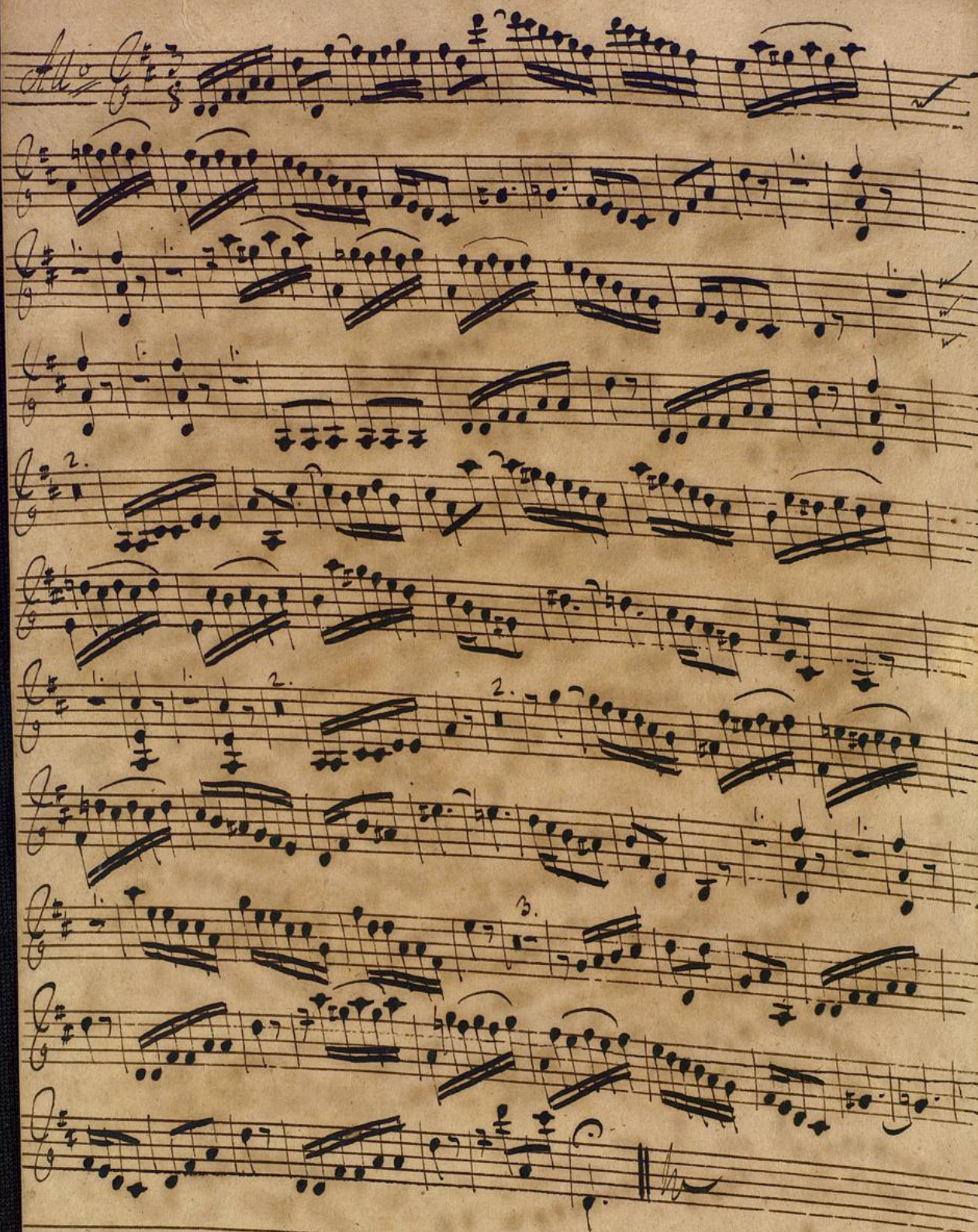




Violino I^{mo}

Concerto





Violino 2^{do}

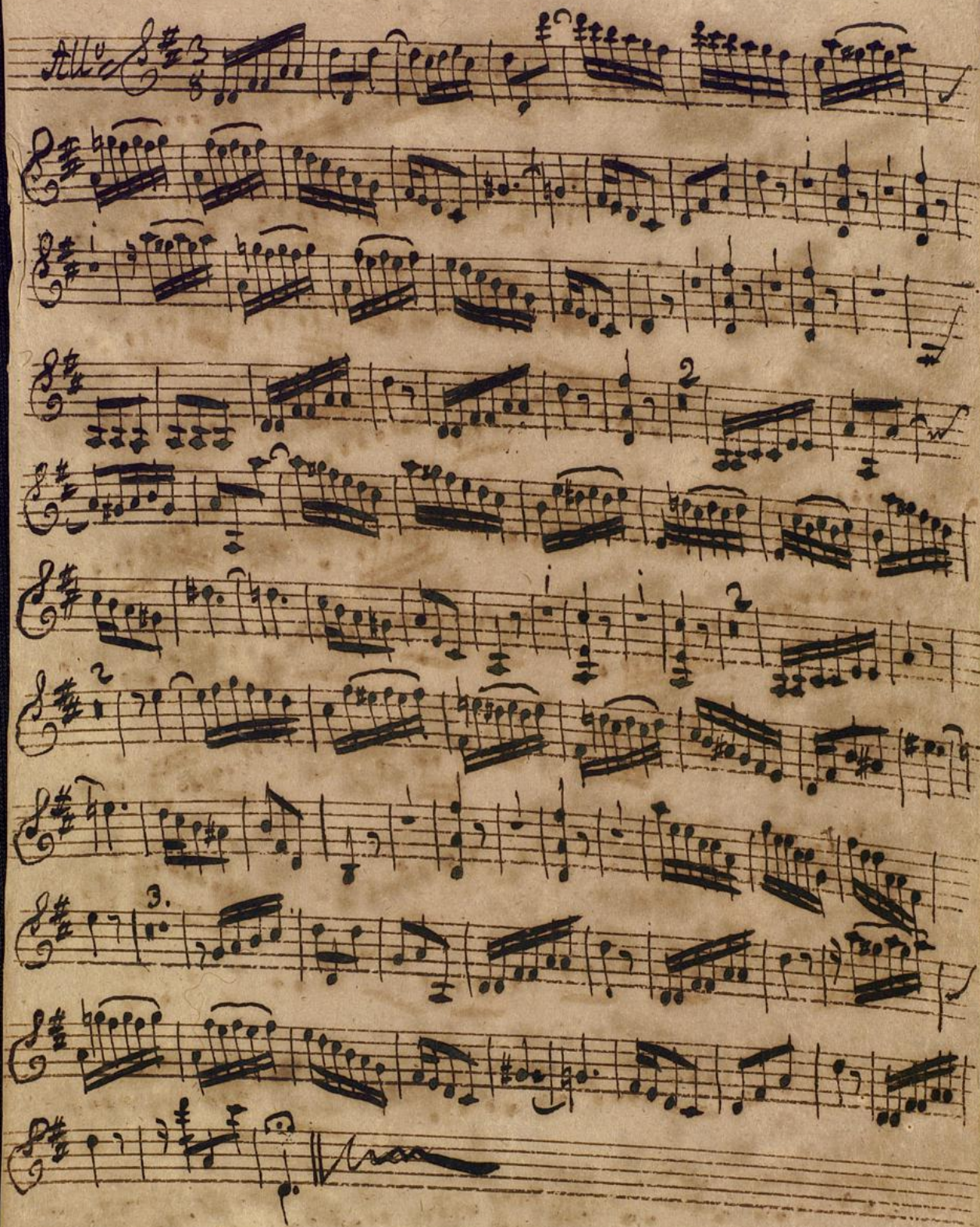
Concerto
All^o

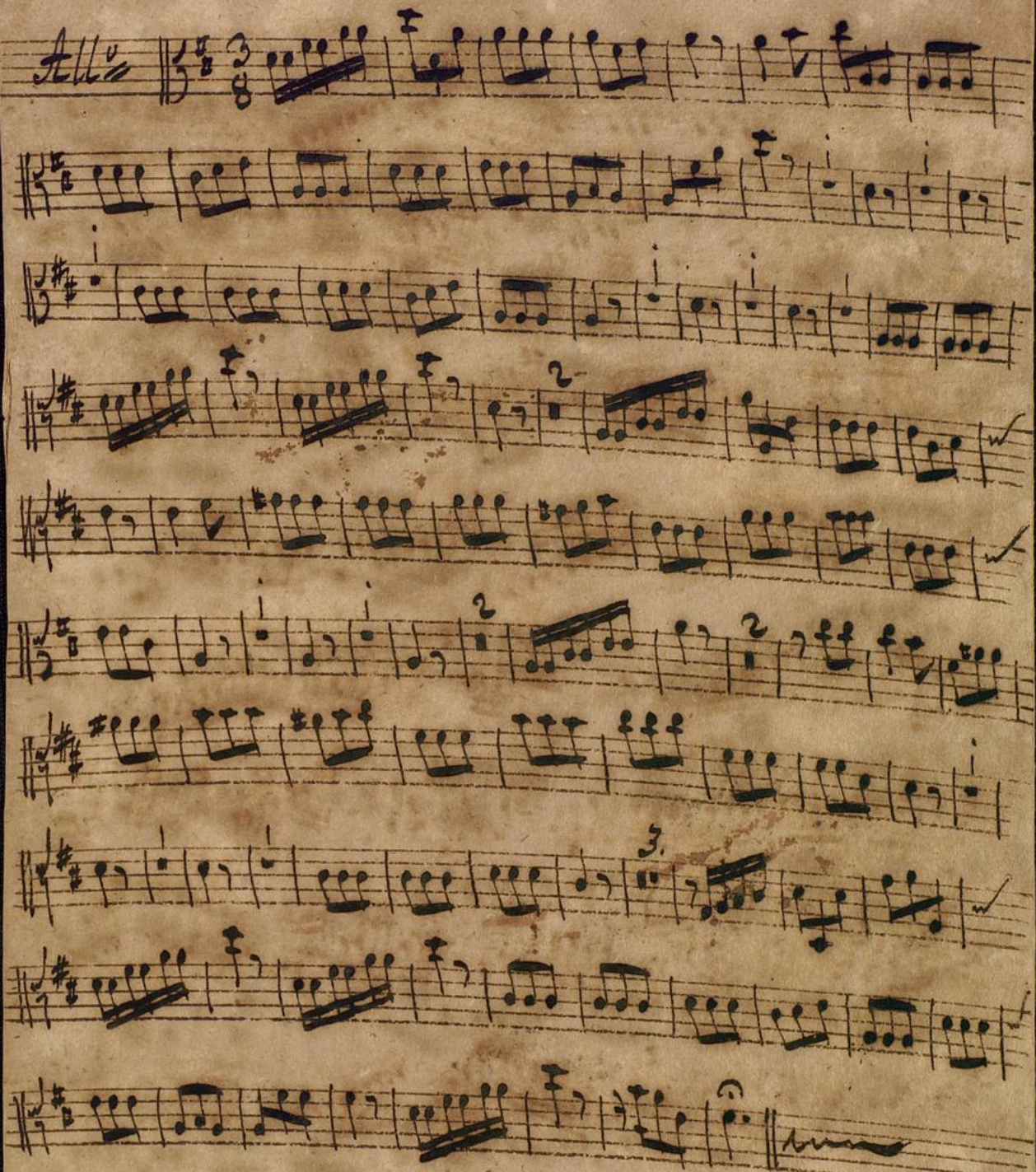


Andante



V. S. rochi





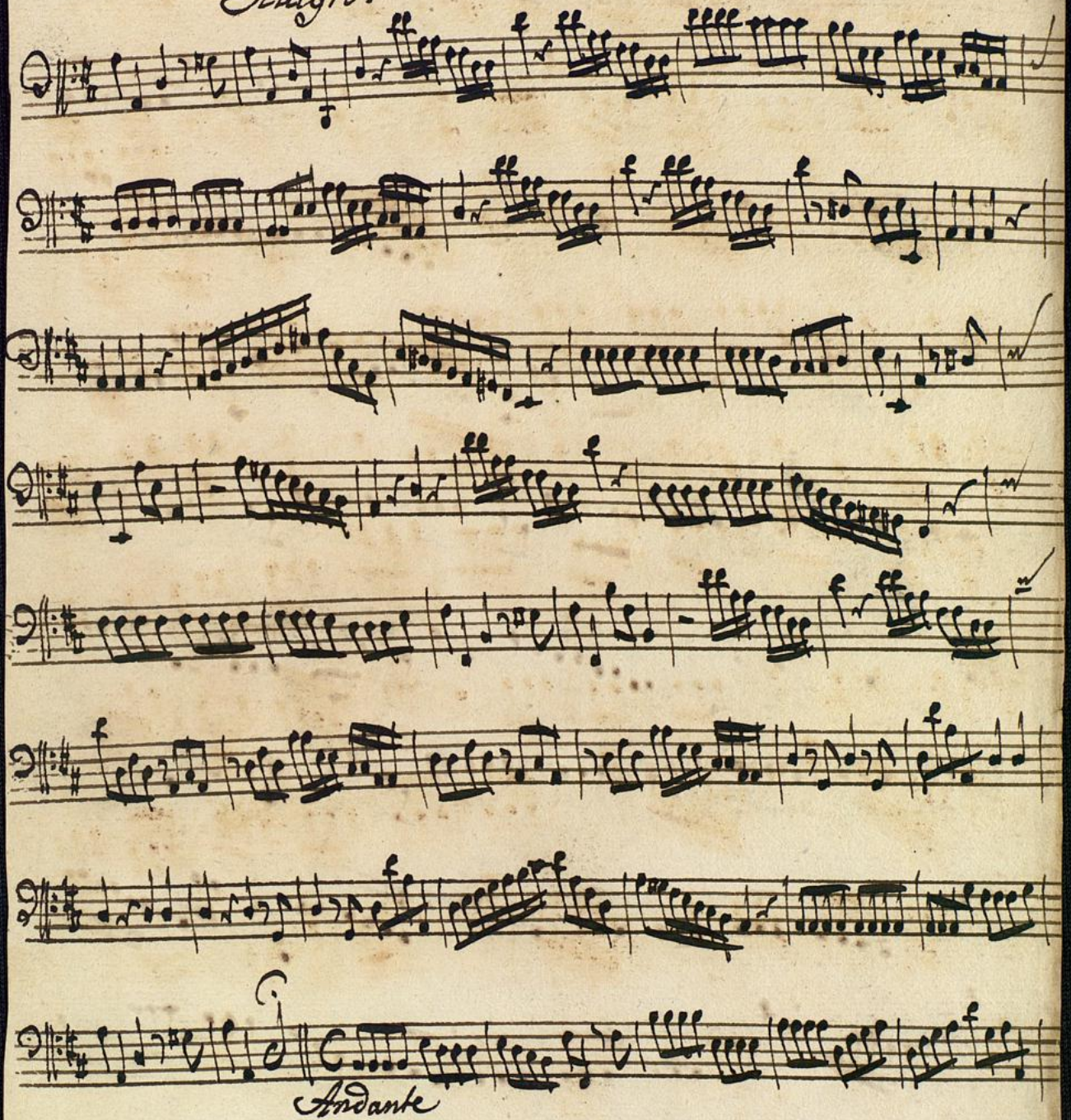
Concerto

Cembalo

Handwritten musical score for Cembalo, featuring multiple staves of music with various time signatures (e.g., 3/4, 6/8, 4/4) and dynamic markings (e.g., *Andante*, *Allegro*). The notation includes notes, rests, and fingerings, with some sections marked with numbers like 6, 7, 8, 9, 10, 11, 12, 13, 14, 15, 16, 17, 18, 19, 20, 21, 22, 23, 24, 25, 26, 27, 28, 29, 30, 31, 32, 33, 34, 35, 36, 37, 38, 39, 40, 41, 42, 43, 44, 45, 46, 47, 48, 49, 50, 51, 52, 53, 54, 55, 56, 57, 58, 59, 60, 61, 62, 63, 64, 65, 66, 67, 68, 69, 70, 71, 72, 73, 74, 75, 76, 77, 78, 79, 80, 81, 82, 83, 84, 85, 86, 87, 88, 89, 90, 91, 92, 93, 94, 95, 96, 97, 98, 99, 100.

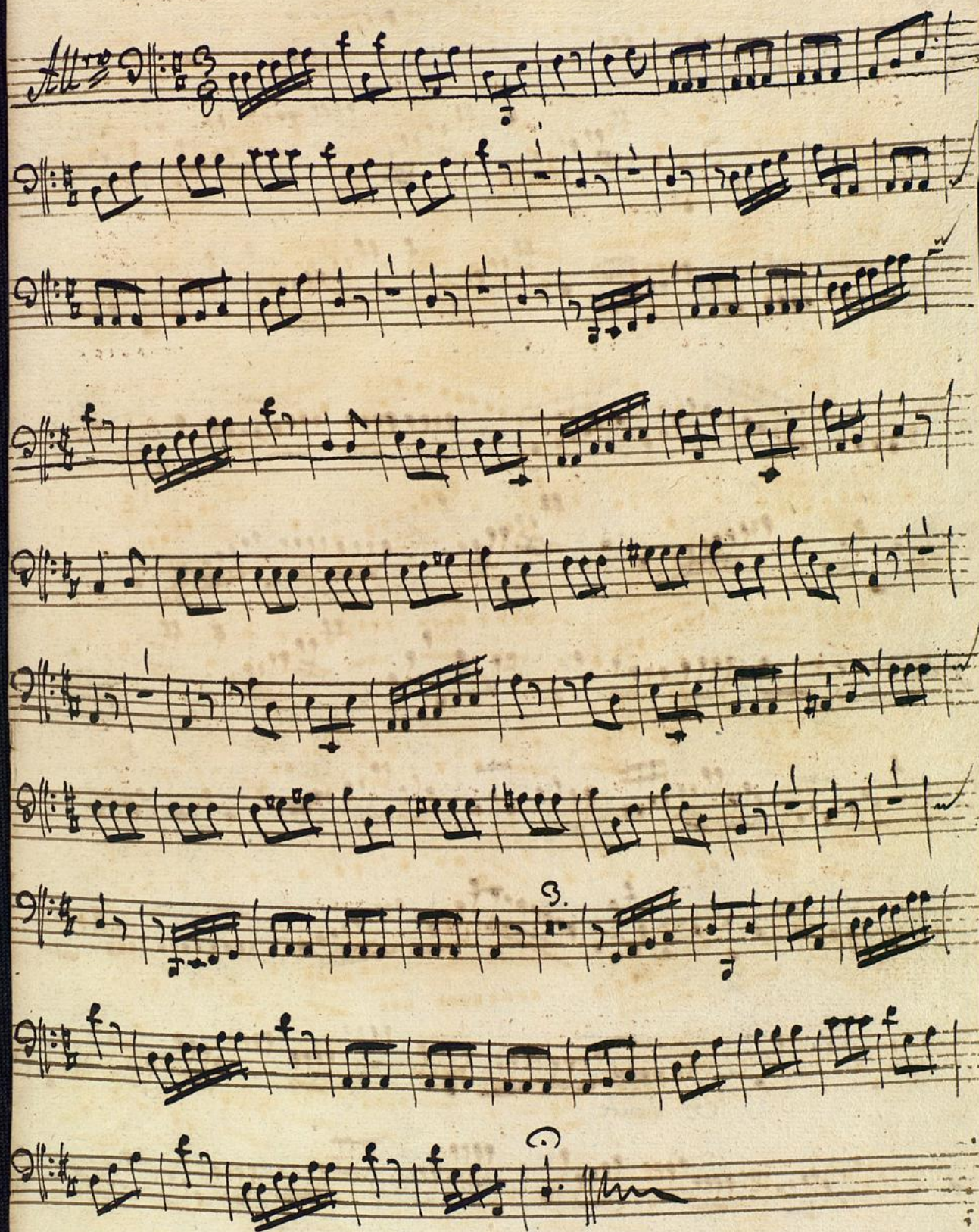
Barfon

Concerto *Allegro.*



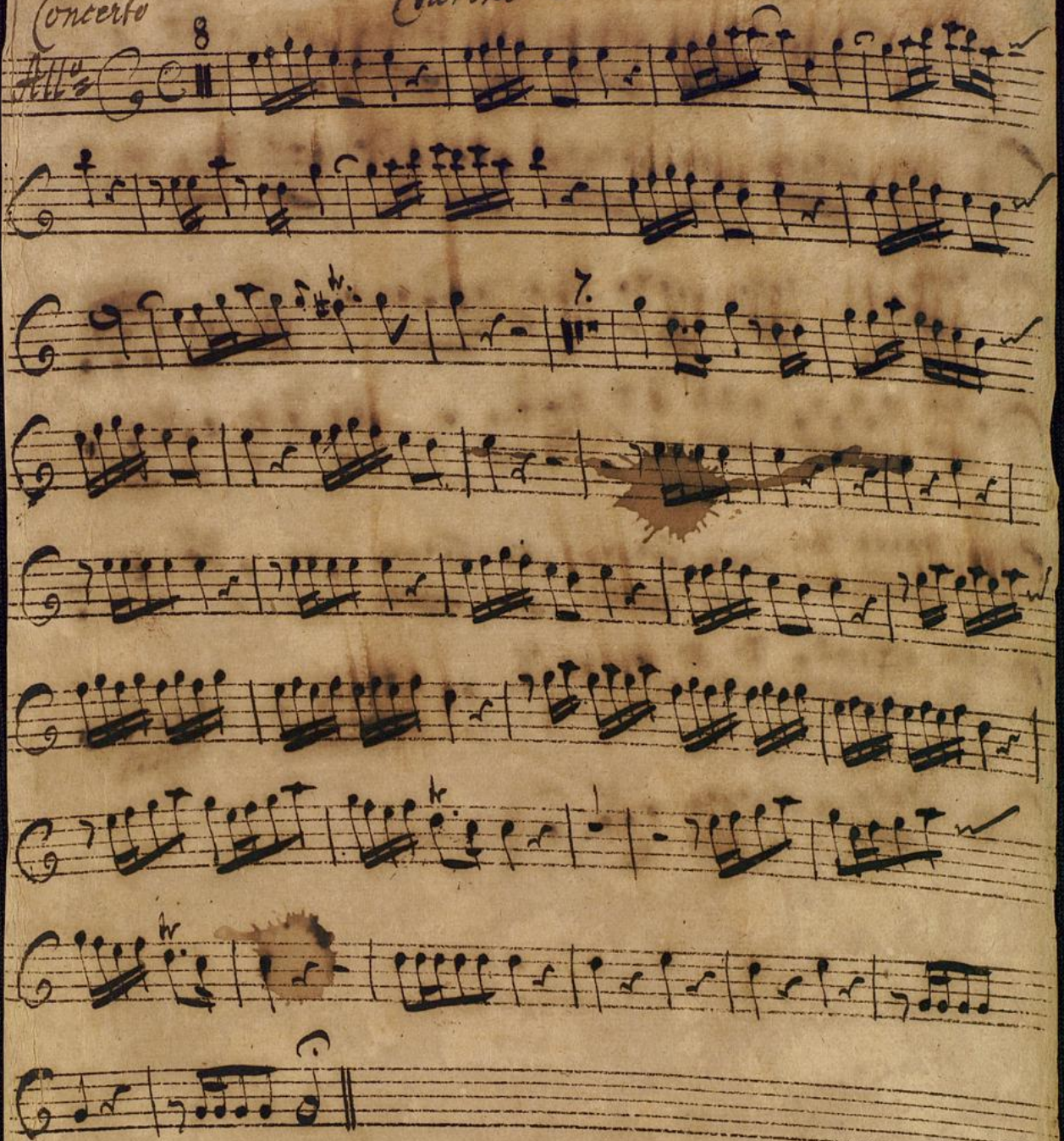
Andante





Concerto

Carino 1^o mov



Andante tacet //

V. S. volti

15.



Concerto

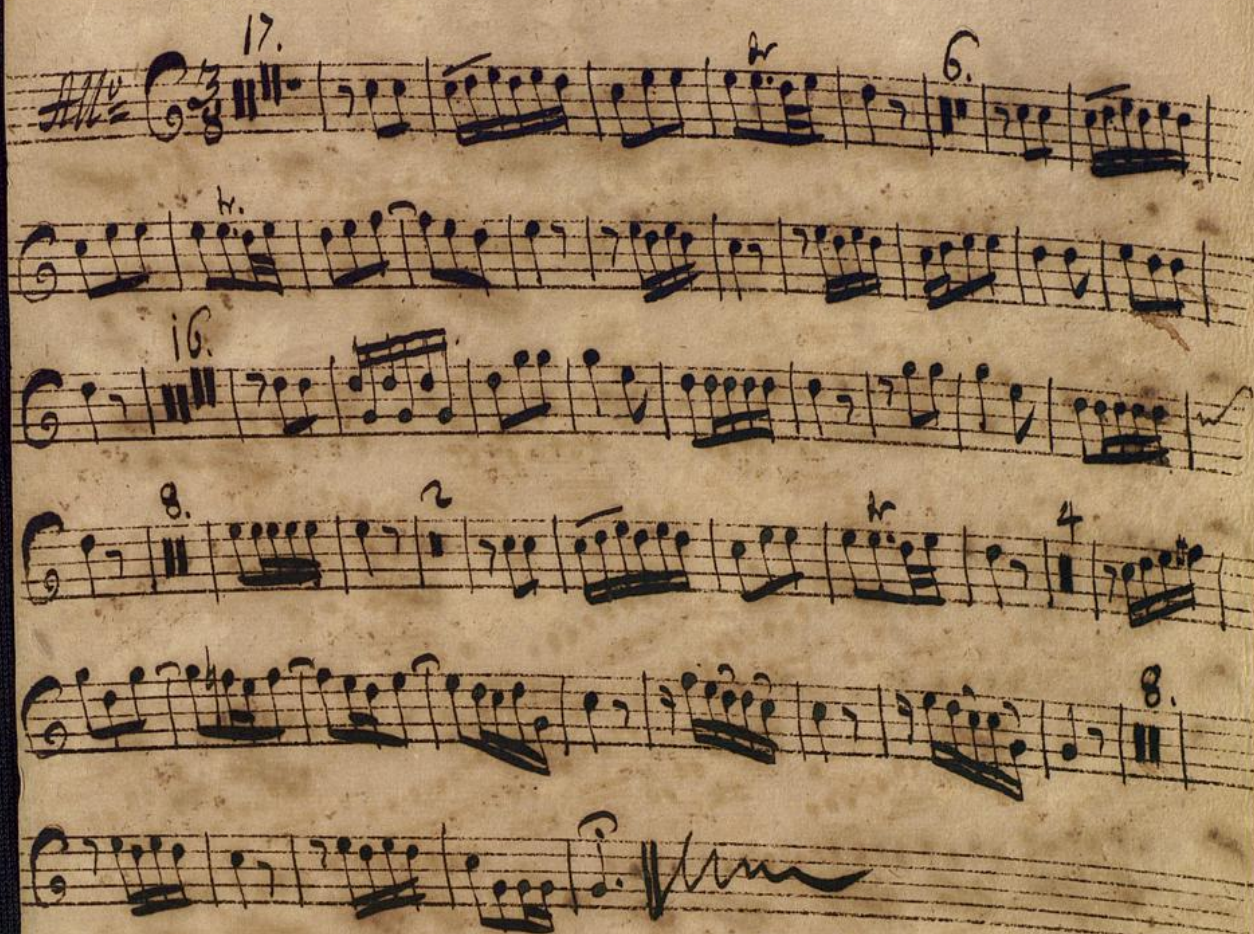
Curino 2^{do}

8

Handwritten musical score for Concerto Curino 2do, measures 1-10. The score is written on ten staves in G-clef, 6/8 time. The first staff begins with a treble clef, a key signature of one sharp (F#), and a common time signature (C). The music consists of eighth and sixteenth notes, with some rests. The eighth measure is marked with a '7' above it. The piece ends with a double bar line and repeat dots.

Andante tacet //

V. S. volti



Musik Hs. 309

Violino primo.

Dubl.

Concerto, 






























Andante.









V. S. velli.

Allegro 8 $\frac{3}{8}$



