

Schranex No: II.

9. Fach 34. Lage.

Sinfonia

co. V. ^{oni} Viola e Basso. 4. St.

del Sig. Fasch.



Musica	
2423	
N	21

Sächs.
Landes-
bibl.

1

URFILM 49/1976 Nr. 838

Sächsische Landesbibliothek in Dresden

§3/85 Nr. 95 = 13

Handschrift Nr. Ms 2423-N-21

Dieser Band wurde 1996 durch Bestrahlung sterilisiert. Verfärbungen stellen keine Gefahr dar.

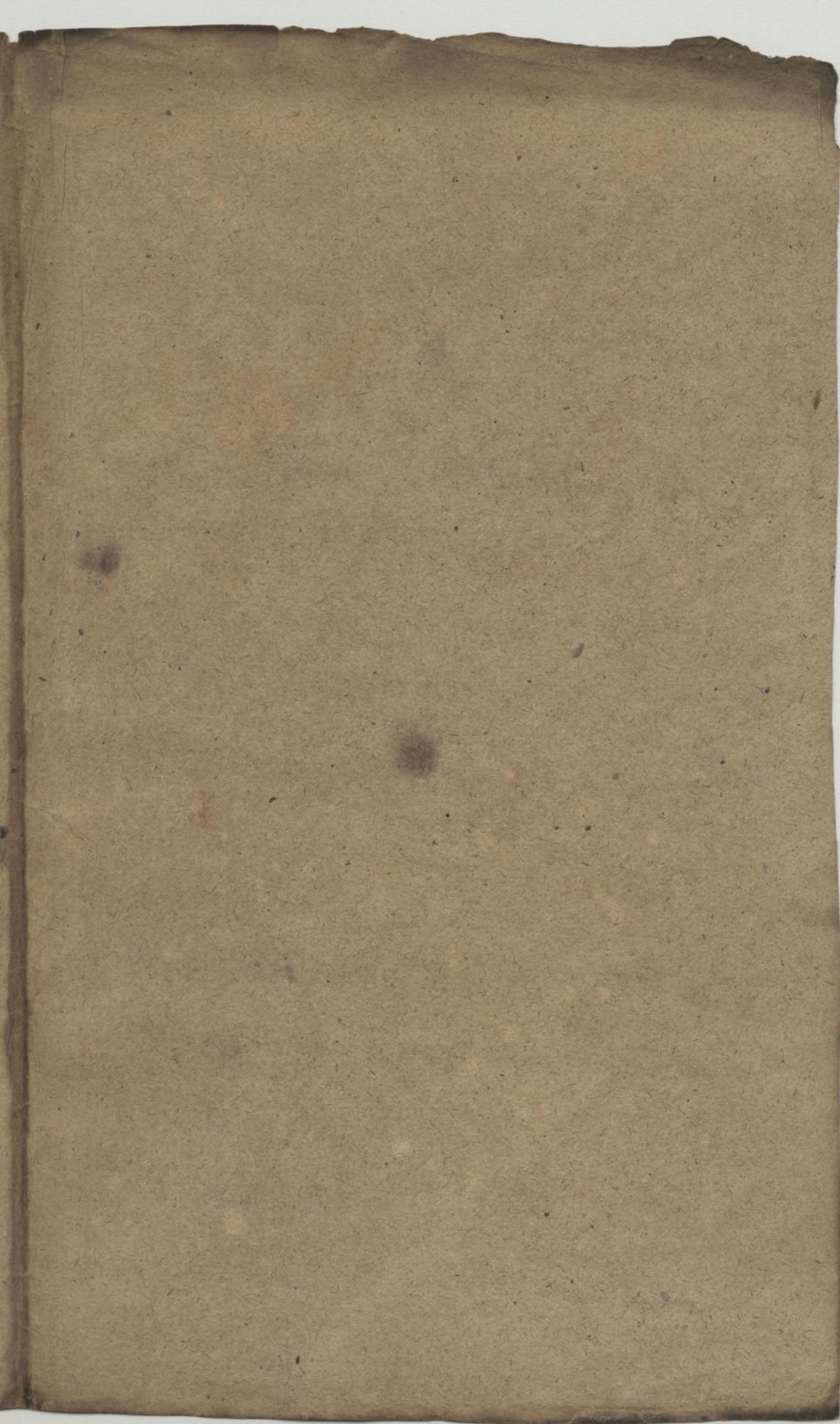
Die Benutzung dieser Handschrift ist nur unter der Bedingung gestattet, daß der Entleiher der hiesigen Bibliothek ein Stück seiner auf die Handschrift bezüglichen Veröffentlichung geschenkweise überläßt, sofern die Bibliotheksverwaltung nicht ausdrücklich auf die Überlassung verzichtet. Zum Durchzeichnen oder zur Herstellung von Lichtbildern ist besondere Erlaubnis einzuholen.

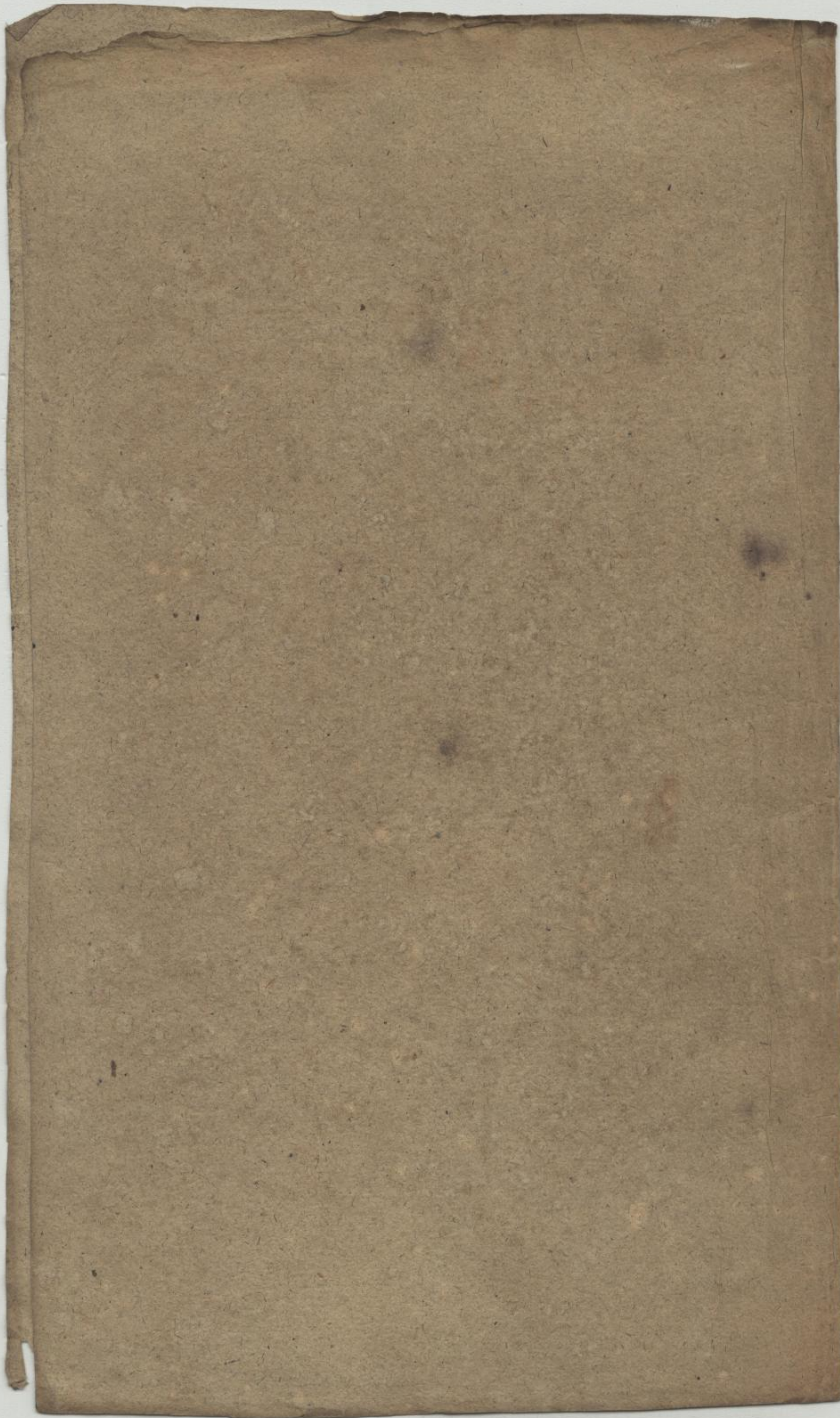
Beherrschende Auskünfte oder Hinweise auf Veröffentlichungen über diese Handschrift, die der Bibliothek noch unbekannt sind, werden dankbar entgegengenommen.

Benutzer der Handschrift seit 1959

Datum	Name, Stand und Wohnung des Benutzers	Ort der Benutzung	Art der Benutzung (nur eingesehen?, ganz od. teilw. abgeschrieben?, ganz oder teilweise verglichen?)	Zweck der Benutzung (Ist Veröffentlichung beabsichtigt und in welcher Form?)
-------	---------------------------------------	-------------------	--	--

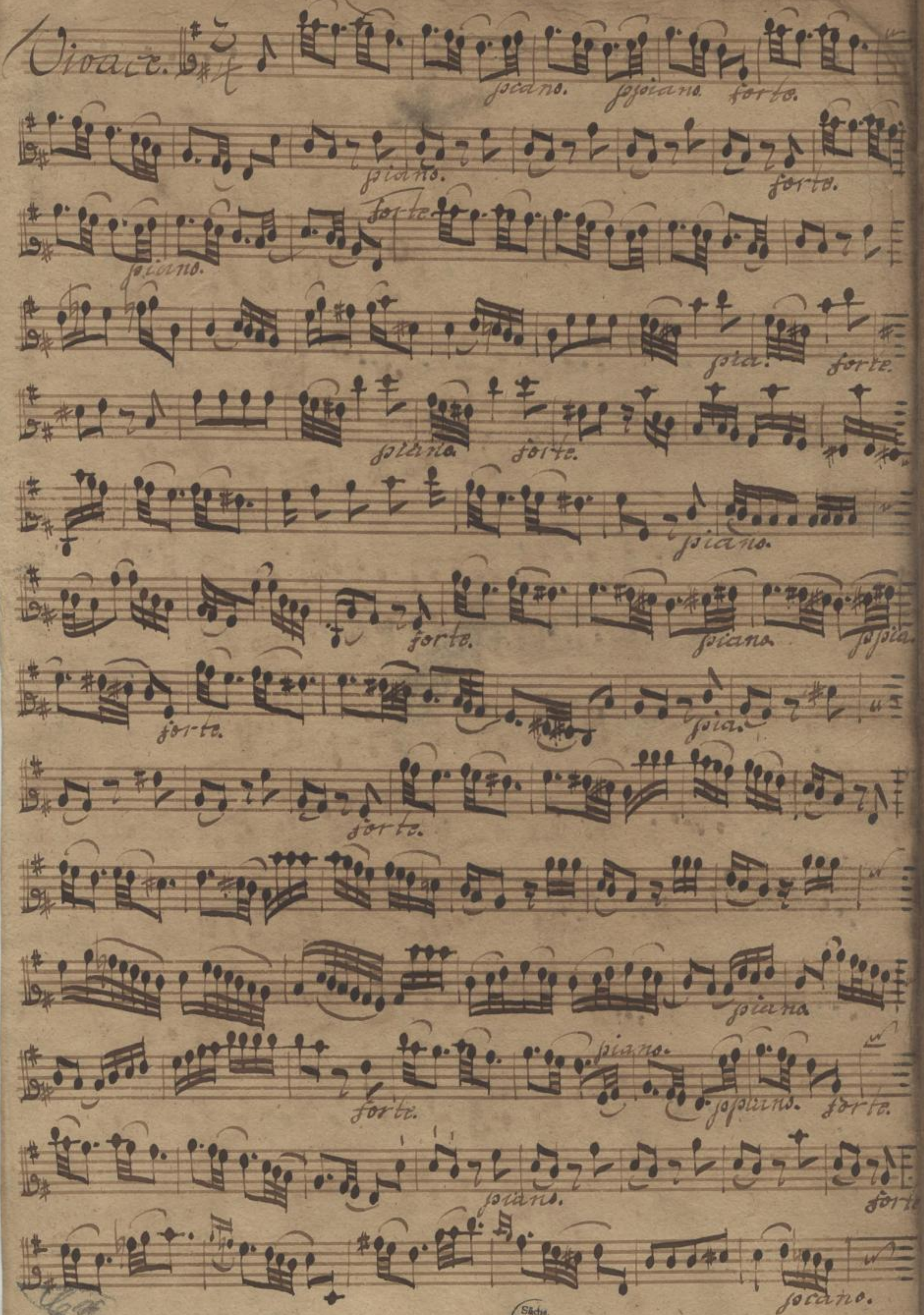
III-9-130 c Id-G 54 59 11 2 359





Sinfonia.

Violino Primo.

Vivace. 

piano. *forziano.* *forte.*

piano. *forte.*

piano.

forz. *forte.*

piano. *forte.*

piano.

forte. *piano.* *forziano.*

forte. *piano.*

forte.

piano.

forziano. *forte.*

piano. *forte.*

piano.

304 6. 1. 6. 7

Mus. 2423-N-21

Sächs. Landesbibl.

2

Handwritten musical notation on three staves. The top two staves contain dense melodic and harmonic lines with various ornaments and dynamics. The bottom staff has a few notes followed by a double bar line and some scribbles.

Andante.

Handwritten musical notation on eight staves. The first staff is labeled "Andante." and "piano." The subsequent staves show complex rhythmic patterns with dynamic markings like "for.", "piano.", and "forte." and trills marked "tr".

Tolti Subito.

2

3

2423
N 27

Allabreve. $\text{B}\sharp$ 2/1

5. *tr* *tr*

piano. *forte.*

3. *tr* *tr* *tr*

piano. *forte.*

piano. *forte.*

3

4

fr.
piano piano forte.

Allegro.

The image shows a page of handwritten musical notation on aged, yellowed paper. It features several staves of music. The top staff begins with a treble clef, a key signature of one sharp (F#), and a common time signature (C). The first few measures are marked with dynamics: *piano*, *piano*, and *forte.*. The second staff contains a few notes followed by a double bar line and a large, diagonal scribble. The third staff is marked *Allegro.* and contains a series of notes with trills indicated by 'tr'. The fourth and fifth staves continue the melodic line with various dynamics including *forte.*, *piano.*, and *ppiano.*. The sixth and seventh staves show more complex rhythmic patterns with trills and dynamics like *piano.*, *for.*, and *piano.*. The eighth and ninth staves feature rapid passages with trills and dynamics such as *ppiano.*, *forte.*, and *pp.*. The tenth and eleventh staves conclude the piece with trills and dynamics like *piano.*, *pp.*, and *forte.*. The final staff ends with a double bar line and a large, diagonal scribble.

Sinfonia.

Violino Secondo.

Violino. *piano. pppiano. for.*

piano. forte.

piano. forte.

piano. forte.

piano. pppiano. forte.

piano. forte.

forte. piano.

forte. pppiano.

forte. piano.

forte. piano.

5

Sächs. Landesbibl.

6

Ca 304

Mus. 2423-N-21

Handwritten musical notation on three staves. The top two staves contain dense melodic lines with trills and slurs. The bottom staff has a few notes followed by a double bar line and a scribbled-out section.

Andante.

Handwritten musical notation on seven staves. The first staff is labeled "Andante." and "piano." The subsequent staves show dynamic markings of "forte." and "piano." alternating. The notation includes various note values, slurs, and trills.

Tolti subito.

6

7

24.2.3

9.7.21

4

Allabreve. *tr*



7

8

This image shows a page of handwritten musical notation on aged, yellowed paper. The score consists of approximately 14 staves of music. The notation includes various note values, rests, and dynamic markings such as *piano*, *forte*, *piu.*, and *molto*. The word *Allegro* is written at the beginning of the piece. The paper shows signs of wear, including creases and some discoloration. The bottom of the page features two small handwritten symbols, possibly page numbers or section markers.

9

8

Sinfonia.

Viola.

Vivace. *piano. ppiano. forte.*

piano. forte. piano.

for.

piano. forte. piano. forte.

piano. forte.

piano. ppiano. forte. piano.

forte.

piano.

forte. piano. ppiano. forte.

piano. forte.

piano. for. piano. forte.

Andante.

piano. forte. piano. forte. piano.

for. pia. forte. piano.

Ca 304



10

Colla Subito.

Mus. 2423-N-21

9

Allabreve. *Mb.*

Handwritten musical score for the first section, marked *Allabreve*. The score consists of 11 staves. The first staff begins with a treble clef, a key signature of one sharp (F#), and a 2/4 time signature. The music is written in a single system. The first staff contains a whole rest followed by a series of notes, with a *tr* (trill) marking above the first note. The second staff contains a series of notes, with *piano.* and *forte.* markings below. The third staff contains a series of notes, with *tr* markings above. The fourth staff contains a series of notes, with *tr* markings above. The fifth staff contains a series of notes, with *piano.* and *forte.* markings below. The sixth staff contains a series of notes, with *piano.* and *forte.* markings below. The seventh staff contains a series of notes, with *piano.* and *forte.* markings below. The eighth staff contains a series of notes, with *piano.* and *forte.* markings below. The ninth staff contains a series of notes, with *piano.* and *forte.* markings below. The tenth staff contains a series of notes, with *piano.* and *forte.* markings below. The eleventh staff contains a series of notes, with *piano.* and *forte.* markings below.

Handwritten musical score for the second section, marked *Allegro*. The score consists of 11 staves. The first staff begins with a treble clef, a key signature of one sharp (F#), and a 2/4 time signature. The music is written in a single system. The first staff contains a series of notes, with *Allegro* written above. The second staff contains a series of notes, with *piano.* and *forte.* markings below. The third staff contains a series of notes, with *piano.* and *forte.* markings below. The fourth staff contains a series of notes, with *piano.* and *forte.* markings below. The fifth staff contains a series of notes, with *piano.* and *forte.* markings below. The sixth staff contains a series of notes, with *piano.* and *forte.* markings below. The seventh staff contains a series of notes, with *piano.* and *forte.* markings below. The eighth staff contains a series of notes, with *piano.* and *forte.* markings below. The ninth staff contains a series of notes, with *piano.* and *forte.* markings below. The tenth staff contains a series of notes, with *piano.* and *forte.* markings below. The eleventh staff contains a series of notes, with *piano.* and *forte.* markings below.

Allabreve.

allegro

piano. forte.

A 2

13

2423

