

Symphony No. 2, Op. 9 (Antar)

VIOLONCELLI.

I.

Nicolai Rimsky-Korsakov

Largo.

divisi. 2 *p* 3 *p*

1 *pp* 3 2 *p*

pp 2

unis. *p* 2

div. *pp* 2 3 3

VIOLONCELLI.

4

Allegro.

div. pp

pp

pp

unis. pizz.

3

1

1

1

1

5

1

1

1

1

6 con sord. arco

pp

cresc.

poco

a

poco

1

VIOLONCELLI.

7

div. *ff*
mf

f
f

8

mf
dim.

mf

p
pp

dim.

9

Largo.

senza sord.

mf *in tempo*

10

Allegretto.

12

pizz.

3

pp

VIOLONCELLI.

3 **11**

p

arco

p

12

div. *pp* *cresc.* *dim.*

pp

unis. *pp* pizz. *i*

pp

13 arco div. *pp* 3

pp

14 unis. *f*

f

f *dimin.* 1

f

15

div. *pp* *poco cresc. dim.* 2

pp

VOLONCELLI.

pizz. *p* arco div. *pp* *cresc.* *dim.*



16 unis. pizz. *pp* arco *p*



17 pizz. *mf* div. *mf* pizz. *mf*



arco *f* arco *f* *dim.*



unis. pizz. *p* **18** Adagio. *pp* *in tempo* 1



arco *pp* 1 *pp* 2



19 Allegretto. (Tempo I.) pizz. *p* 3 3



VIOLONCELLI.

20 *pp* 3 21 *Largo.* 3

div. *p* 3 *p* 3 *pp*

22 3 *p* *cresc.* *sf* *p*

II.

23 *Allegro.* 1 *pp* *cresc. poco a poco*

VIOLONCELLI.

24

ff *dim.* *p* *pp* *cresc. poco a poco*

f *f* *dim.* *f*

25

26

f *ff*

27

f *f* *ff*

f

VIOLONCELLI.

ff

28 *Meno mosso.*
*trem. sul ponticello al segno **

mf *cresc. molto* *ff* *dim.*

allarg.

29 *Tempo I.*

p *cresc.* *sfpp*

30

cresc. *ff*

sf *ff*

31

sf

32

f *p*

f

f

33

div.

VIOLONCELLI.

34

Two staves of music. The first staff has a treble clef and a key signature of one flat. It contains a double bar line, a fermata, and a dynamic marking of *f* followed by *dim.*. The second staff has a bass clef and a key signature of one flat, with a dynamic marking of *p*.

accis.

Staff with a bass clef and a key signature of one flat, starting with a dynamic marking of *p*.

Staff with a bass clef and a key signature of one flat, ending with a dynamic marking of *cresc.*

Staff with a bass clef and a key signature of one flat.

Staff with a bass clef and a key signature of one flat, ending with a dynamic marking of *ff* and a triplet of notes.

35

Staff with a bass clef and a key signature of one flat, ending with a dynamic marking of *p*.

Staff with a bass clef and a key signature of one flat.

Staff with a bass clef and a key signature of one flat, starting with a dynamic marking of *cresc.*

36

Staff with a bass clef and a key signature of one flat, starting with a dynamic marking of *fp*.

Staff with a bass clef and a key signature of one flat, ending with a dynamic marking of *3 pizz.*

VOLONCELLI.

III.

87 Allegro risoluto.

7 *ff*

VIOLONCELLI.

Two staves of musical notation in bass clef with a key signature of two sharps (F# and C#). The top staff contains a melodic line with slurs and accents. The bottom staff contains a rhythmic accompaniment with slurs and accents. The word "div." is written above the first measure of the bottom staff.

Two staves of musical notation. The top staff begins with a box containing the number "40" and the text "unis. arco". The music features a melodic line with slurs and accents, and a rhythmic accompaniment. The dynamic marking "pp" is placed below the first measure, and "f" is placed below the final measure. A box containing the number "41" is placed above the second measure of the top staff.

Two staves of musical notation. The top staff continues the melodic line with slurs and accents. The bottom staff continues the rhythmic accompaniment with slurs and accents.

Two staves of musical notation. The top staff continues the melodic line with slurs and accents. The bottom staff continues the rhythmic accompaniment with slurs and accents.

Two staves of musical notation. The top staff continues the melodic line with slurs and accents. The bottom staff continues the rhythmic accompaniment with slurs and accents. A box containing the number "42" is placed above the first measure of the top staff. The dynamic marking "pp" is placed below the first measure, and "poco cresc." is placed below the final measure.

Two staves of musical notation. The top staff continues the melodic line with slurs and accents. The bottom staff continues the rhythmic accompaniment with slurs and accents. A box containing the number "43" is placed above the first measure of the top staff. The dynamic marking "mf" is placed below the first measure.

Two staves of musical notation. The top staff continues the melodic line with slurs and accents. The bottom staff continues the rhythmic accompaniment with slurs and accents.

Two staves of musical notation. The top staff continues the melodic line with slurs and accents. The bottom staff continues the rhythmic accompaniment with slurs and accents. A box containing the number "44" is placed above the first measure of the top staff. The dynamic marking "p" is placed below the first measure.

Two staves of musical notation. The top staff continues the melodic line with slurs and accents. The bottom staff continues the rhythmic accompaniment with slurs and accents. A box containing the number "45" is placed above the first measure of the top staff. The dynamic marking "f" is placed below the first measure.

Two staves of musical notation. The top staff continues the melodic line with slurs and accents. The bottom staff continues the rhythmic accompaniment with slurs and accents.

VIOLONCELLI.

ff

46

div. dolce pizz. pp

pizz. pp

47

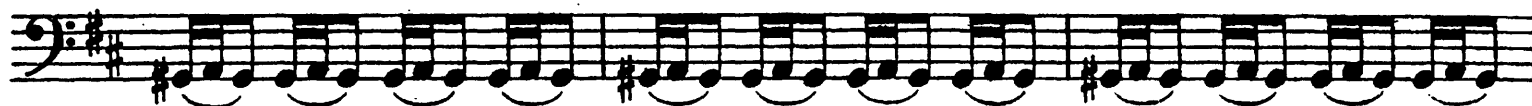
p

poco cresc.

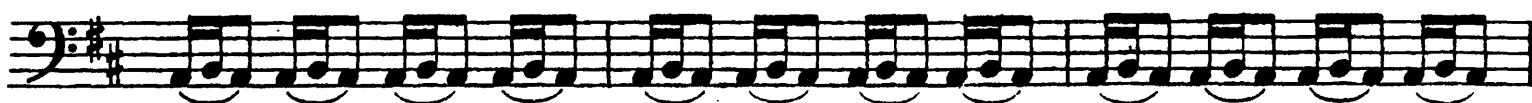
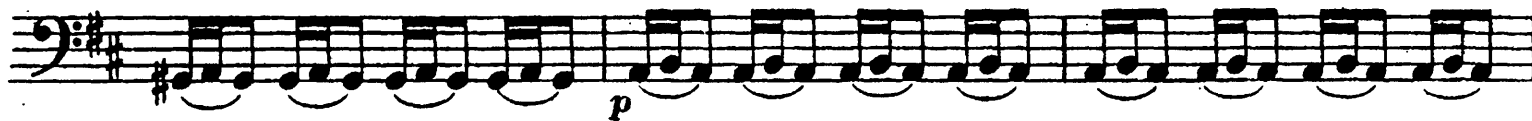
48

p

VIOLONCELLI.



49



cresc.

2

50



51



cresc.



ff

52



1

VIOLONCELLI.

IV.

53 Allegretto. **54** Adagio. **55** 2 V-c. soli pizz. *mf* **1**

div. 14 30 altri 1 pizz. *p* **1**

1 **1** **1** **1** **1**

56 unis. arco *mf* arco *mf*

unis. *f*

57 *cresc. poco a poco*

f

58 **1** pizz. **2** **59** **7** arco **2**

p *pp*

60 pizz. **2** arco **9** **61** **12** **62** **1**

f *p*

VIOLONCELLI.

First staff of music, bass clef, starting with a piano (*p*) dynamic marking.

Second staff of music, bass clef, featuring a measure with a '2' above it and a measure with a '63' in a box. Dynamics include *p* and *mf*.

Third staff of music, bass clef, with dynamics *dim.*, *p*, and *mf cantabile*. It includes a measure with a '5' above it.

Fourth staff of music, bass clef, with a measure marked with a '64' in a box and ending with a *p* dynamic.

Fifth staff of music, bass clef, continuing the melodic line.

Sixth staff of music, bass clef, with the instruction *largamente*.

Seventh staff of music, bass clef, starting with a measure marked '65' in a box. Dynamics include *mf* and *cresc.*

Eighth staff of music, treble clef, with a *V* marking above the final measure.

Ninth staff of music, treble clef, with dynamics *ff* and *rit.*, and a measure with a '5' above it.

Tenth staff of music, bass clef, starting with a measure marked '66' in a box. Dynamics include *p*, *rit.*, and *a tempo*. The piece concludes with the instruction *tacet al fine.*