

EIGHT OVERTURES
in 8 Parts,
Four for Violins, Hoboys, or German Flutes
AND
Four for Violins, French Horns, &c.
with a Bass
FOR THE
VIOLONCELLO & HARPSICORD.

COMPOS'D BY

THOMAS AUGUSTINE ARNE.

London. Printed for I. Walsh in Catharine Street, in the Strand.

Of whom may be had Just Publish'd
For CONCERTS

Handel's 60 Overtures. 8 Parts
Haffe and Vinci's Overtures
Dr. Green's Overtures
Handel's 80 Selected Songs. 6 Parts.
Handel's 2d Set of 80 Selected Songs
from his latest Oratorios. 6 Parts.
Mudge's Concertos
St Martin's Concertos

Handel's 12 Grand Concertos
Handel's Concertos for Hoboys. Op. 34
Geminiani's 12 Concertos
Corelli's 12 Solos made Concertos
by Geminiani
Corelli's 12 Concertos
Deffsch's Concertos
Lucatelli's Concertos

Castrucci's Concertos
Stanley's Concertos
Weidman's Concertos G.F.
Haffe's Concertos G.F.
Albert's Concertos
Vivaldi's Concertos
Taffarini's Concertos
Albinoni's Concertos

VIOLA

OVERTURE I

f^e p^o f^e p^o f^e p^o
Largo ma non troppo

f^e p^o f^e

p^o f^e p^o
1st 2^d
p^o f^e

6
3
4
Solo
tutti

Solo

tutti

Solo pia.

tutti for.

VIOLA

OVERTURE

II

Con Spirito

p

f p

Viola Obligata

Allegro Solo tutti

Solo tutti

Solo

tutti Solo tutti

Solo tutti

Solo tutti

2^d Time Pia-

Ad!

Minuetto

p f

p f p f

VIOLA

5

OVERTURE III

First section of the Overture III for Viola. It begins with a treble clef, a key signature of one flat (B-flat), and a common time signature (C). The tempo is marked "Presto". The music consists of eight staves of notation. The first staff starts with an asterisk (*). Dynamic markings include *p^o* (piano) and *f^e* (forte). A second ending bracket labeled "2" appears at the end of the fourth staff. The section concludes with a double bar line.

|| *Andante Tacer* ||

Second section of the Overture III for Viola, titled "Tempo di Menuetto". It begins with a treble clef, a key signature of one flat (B-flat), and a 3/8 time signature. The tempo is "Tempo di Menuetto" and the performance instruction is "Con Spirito". The music consists of four staves of notation. The first staff starts with an asterisk (*). Dynamic markings include *f^e* (forte) and *p^o* (piano). The section concludes with a double bar line.

VIOLA

7

OVERTURE IV

Con Spirito

p *f* *p^o* *f^e*

p *f* *p* *f*

p *f* *p* *f*

p *f*

4

Con Spirito

4

4

tr tr

3 2 2

Andante Pia.

f *p* *f* *p*

f *p* *f* *f*

VIOLA

OVERTURE

V

Presto

VIOLA

9

The first system consists of two staves of music. The upper staff contains a melodic line with eighth-note patterns and some slurs. The lower staff contains a rhythmic accompaniment with eighth-note patterns. Both staves begin with a treble clef, a key signature of one sharp (F#), and a common time signature (C).

The second system consists of two staves. The tempo marking "Andante e Piano" is placed below the first staff. The music continues with a melodic line in the upper staff and a rhythmic accompaniment in the lower staff.

The third system consists of two staves. The lower staff features dynamic markings: "for." (forte) under the first and second measures, and "Pia." (piano) under the fourth measure. There are also first and second endings indicated by "1" and "2" above the notes.

The fourth system consists of two staves. The music continues with a melodic line in the upper staff and a rhythmic accompaniment in the lower staff. There are first and second endings indicated by "1" and "2" above the notes.

The fifth system consists of two staves. The lower staff features dynamic markings: "for." (forte) under the first and third measures. There are also first and second endings indicated by "1" and "2" above the notes.

The sixth system consists of two staves. The tempo marking "Allegro Con Spirito" is placed below the first staff. The music continues with a melodic line in the upper staff and a rhythmic accompaniment in the lower staff.

The seventh system consists of two staves. The music continues with a melodic line in the upper staff and a rhythmic accompaniment in the lower staff.

The eighth system consists of two staves. The music continues with a melodic line in the upper staff and a rhythmic accompaniment in the lower staff.

The ninth system consists of two staves. The music continues with a melodic line in the upper staff and a rhythmic accompaniment in the lower staff.

The tenth system consists of two staves. The music concludes with a melodic line in the upper staff and a rhythmic accompaniment in the lower staff. There is a first ending indicated by "1" above the notes.

VIOLA

OVERTURE VI

Largo, ma audace

Pia. for.

Pia. for.

Pia.

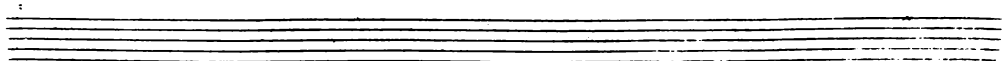
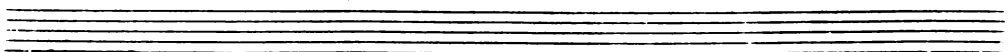
Fuge of two Subject's.

Allegro for.

Allegro for.

VIOLA

11



VIOLA

OVERTURE
VII

Largo

Allegro

Ad^o

Allegro

p^o

f^e

p^o

f^e

p^o

1^a

2^a

VIOLA

OVERTURE
VIII

Largo. *p* *f*

p *f*

p *f* *p* *f*

Con Spirito

6

2

5

Ac?

VIOLA

Minuet

Andante

Musical notation for the Minuet section, measures 1-12. The music is in G minor (one flat) and 3/4 time. It features a melodic line with various ornaments, including trills (tr) and grace notes. The dynamics range from piano (p) to forte (f). The section concludes with a double bar line and repeat dots.

Giga

Con Spirito

Musical notation for the Giga section, measures 1-12. The music is in G minor (one flat) and 2/8 time. It is characterized by a fast, rhythmic melody with many sixteenth and thirty-second notes. The section begins with a key signature change to G major (one sharp) and ends with a double bar line and repeat dots.