

Cello

Foolish Boy

Daniel Léo Simpson
 March 1969
 Sierra Vista, Arizona
 United States of America

Musical notation for measures 1-6 in bass clef, 4/4 time. The notes are: 1. G2, A2, B2, C3; 2. D3, E3, F3, G3; 3. A3, B3, C4, D4; 4. E4, F4, G4, A4; 5. B4, C5, D5, E5; 6. F5, G5, A5, B5.

Musical notation for measures 7-12 in bass clef, 4/4 time. Measure 7 starts with a fermata. The notes are: 7. C4, D4, E4, F4; 8. G4, A4, B4, C5; 9. D5, E5, F5, G5; 10. A5, B5, C6, D6; 11. E6, F6, G6, A6; 12. B6, C7, D7, E7. The piece ends with a fermata and the instruction **rit.**

Tempo I ♩=120 **poco rall.**

Musical notation for measures 13-19 in bass clef, 4/4 time. Measure 13 starts with a fermata and is labeled with a boxed **A** and the number **16**. Measures 14-19 are marked with a bracket and labeled with a boxed **B** and the number **7**.

Musical notation for measures 20-30 in bass clef, 4/4 time. Measure 20 starts with a fermata and is labeled with a boxed **C** and the number **4**. Measures 21-30 contain a sequence of eighth notes.

Musical notation for measures 31-40 in bass clef, 4/4 time. Measures 31-38 contain a sequence of eighth notes. Measures 39-40 contain a sequence of eighth notes.

Musical notation for measures 41-52 in bass clef, 4/4 time. Measures 41-52 contain a sequence of eighth notes.

Musical notation for measures 53-67 in bass clef, 4/4 time. Measures 53-67 contain a sequence of eighth notes.

Musical notation for measures 68-76 in bass clef, 4/4 time. Measure 68 starts with a fermata and is labeled with a boxed **D**. Measures 69-76 contain a sequence of eighth notes.

V.S.

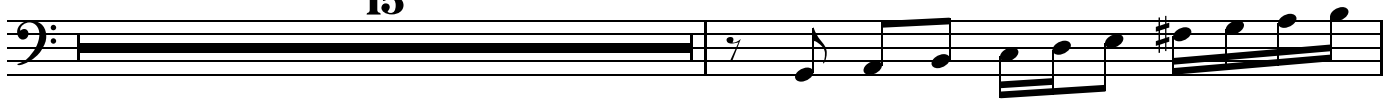
80



85

91 **E**

15

107 **F**

111



115



119



126

