

Peter Ilyich Tchaikovsky
Swan Lake, Op. 20

Timpani

Introduktion

Moderato assai

A

B

C

Musical staff with notes and bar numbers 12, 8, 15.

Musical staff with notes and dynamic markings *p*, *poco a poco*, *cresc...*

to A
D Tempo I.

Musical staff with notes and dynamic markings *ff*, *mf*.

Musical staff with notes and dynamic marking *pp*.

I. Act No. 1

Allegro giusto

Musical staff with notes and dynamic markings *p*, *poco a poco*, *cres con do*.

Musical staff with notes and dynamic marking *i*.

Tchaikovsky — Swan Lake, Op. 20

Timpani

2 1

Handwritten musical score for Timpani, measures 1-16. The score consists of ten staves. The first staff begins with a treble clef, a 2/4 time signature, and a dynamic marking of 'f'. The music features a rhythmic pattern of eighth and sixteenth notes. The fifth staff contains a triplet of eighth notes marked with a '3' above and a 'p' below. The sixth staff has a dynamic marking of 'ff' and a '4' above. The eighth staff has a '5' above. The tenth staff ends with a double bar line and a sharp sign.

3/2 **WALSE**

A, B, Fis, H

Tempo di Valse

Valse

Intrada

Handwritten musical score for the Intrada, measures 1-4. The score consists of one staff. It begins with a treble clef, a 3/4 time signature, and a dynamic marking of 'f'. The music features a rhythmic pattern of eighth and sixteenth notes. The first staff contains a triplet of eighth notes marked with a '3' above and a 'p' below. The second staff has a dynamic marking of 'ff' and a '4' above. The fourth staff has a '5' above.

Tchaikovsky — Swan Lake, Op. 20

Timpani

6 3

Handwritten musical score for Timpani, measures 6-20. The score is written on ten staves. It includes various musical notations such as notes, rests, and dynamic markings. Measure numbers 6 through 20 are written above the staves. Dynamic markings include *p*, *ff*, *mf*, and *f*. The piece concludes with the instruction *Tolto subito*.

Tchaikovsky — Swan Lake, Op. 20

Timpani

Handwritten musical notation for Timpani, measures 1-12. The notation is on a single staff with a treble clef and a common time signature. It features various rhythmic patterns including dotted notes, eighth notes, and sixteenth notes. Measure numbers 1 through 12 are written above the staff.

Handwritten musical notation for Timpani, measures 13-22. The notation is on a single staff with a treble clef and a common time signature. It features various rhythmic patterns including dotted notes, eighth notes, and sixteenth notes. Measure numbers 13 through 22 are written above the staff.

9/16 9

A, D, 2⁴ Allegro moderato

Handwritten musical notation for A, D, 2⁴, measures 18-22. The notation is on a single staff with a treble clef and a common time signature. It features various rhythmic patterns including dotted notes, eighth notes, and sixteenth notes. Measure numbers 18 through 22 are written above the staff. Dynamics include *pp* and *ppoo a poco cresc.*

Handwritten musical notation for A, D, 2⁴, measures 23-25. The notation is on a single staff with a treble clef and a common time signature. It features various rhythmic patterns including dotted notes, eighth notes, and sixteenth notes. Measure numbers 23 through 25 are written above the staff. Dynamics include *ff*.

Handwritten musical notation for A, D, 2⁴, measures 26-30. The notation is on a single staff with a treble clef and a common time signature. It features various rhythmic patterns including dotted notes, eighth notes, and sixteenth notes. Measure numbers 26 through 30 are written above the staff. Dynamics include *ff*.

Handwritten musical notation for A, D, 2⁴, measures 31-35. The notation is on a single staff with a treble clef and a common time signature. It features various rhythmic patterns including dotted notes, eighth notes, and sixteenth notes. Measure numbers 31 through 35 are written above the staff.

Handwritten musical notation for A, D, 2⁴, measures 36-40. The notation is on a single staff with a treble clef and a common time signature. It features various rhythmic patterns including dotted notes, eighth notes, and sixteenth notes. Measure numbers 36 through 40 are written above the staff.

Handwritten musical notation for A, D, 2⁴, measures 41-45. The notation is on a single staff with a treble clef and a common time signature. It features various rhythmic patterns including dotted notes, eighth notes, and sixteenth notes. Measure numbers 41 through 45 are written above the staff.

No 10

E_s, B₁

9/16 4

Handwritten musical notation for E_s, B₁, measures 26-29. The notation is on a single staff with a treble clef and a 6/8 time signature. It features various rhythmic patterns including dotted notes, eighth notes, and sixteenth notes. Measure numbers 26 through 29 are written above the staff. Dynamics include *Allegro*.

Handwritten musical notation for E_s, B₁, measures 30-31. The notation is on a single staff with a treble clef and a 3/4 time signature. It features various rhythmic patterns including dotted notes, eighth notes, and sixteenth notes. Measure numbers 30 and 31 are written above the staff. Dynamics include *Andante sostenuto*.

Tchaikovsky — Swan Lake, Op. 20

Timpani

32 *Allegro semplice* 33 34 *Presto* 5

35 *Moderato* 2 3 4 5 6 7 8 9 10 11 12 13

14 15 36

37 *Allegro* 38 10 8 28 p cresc.

39 *Allegro vivace*

F, *Coda* p cresc.

40 6 7

41 3 p cresc.

fatto subito

Tchaikovsky — Swan Lake, Op. 20

Timpani

6

9/5

A, D, 42 Tempo di Valse

45 Andante

46

47 Allegro

50 Tempo

51

52 Allegro moderato

G, D

III. Coda

Tchaikovsky — Swan Lake, Op. 20

Tampani

53

2 3 4 5 6 7 8 9 10 11 12 13 14

54

2 3 4 5 6 2 3 4 5

6 7 8 9 10 11 12 13 14 55

55

5, H, 56 Andantino

57

58 Allegro

24 26 8

59 7 Tacet

E₁

60

60 Tempo di Polacca

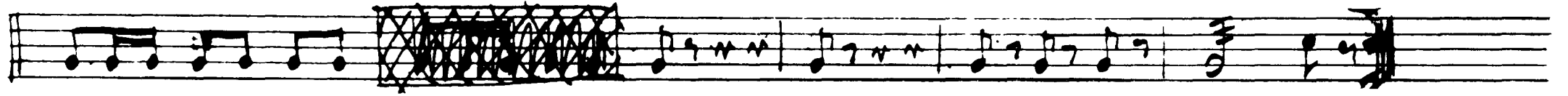
2

f. s

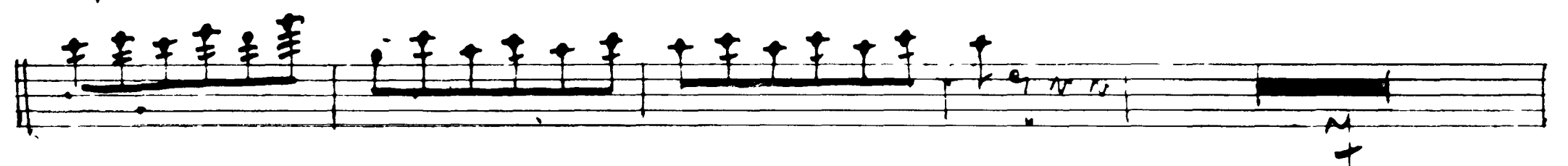
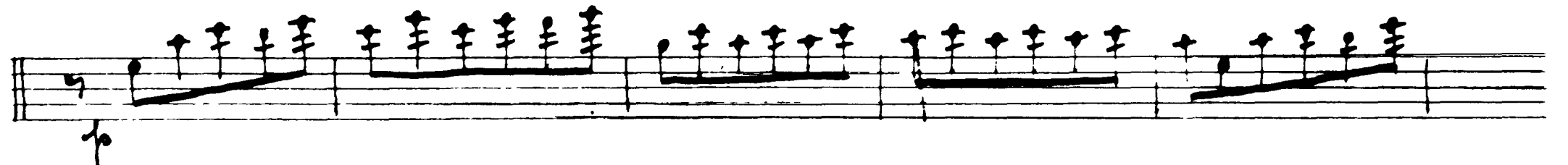
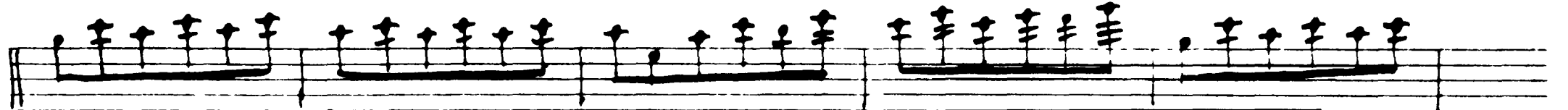
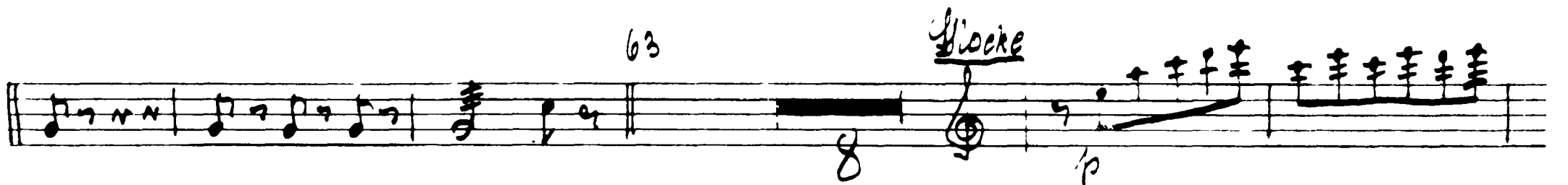
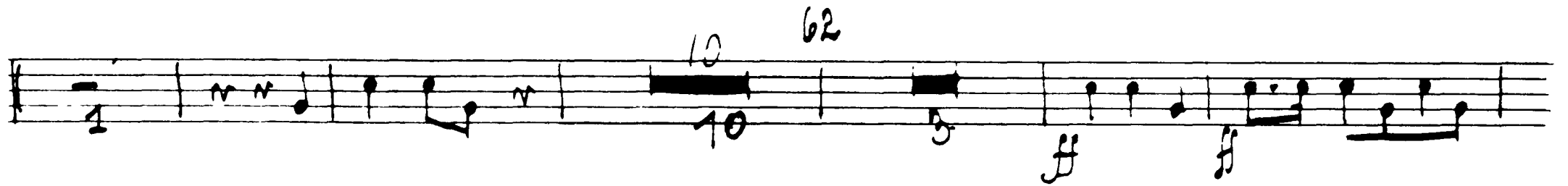
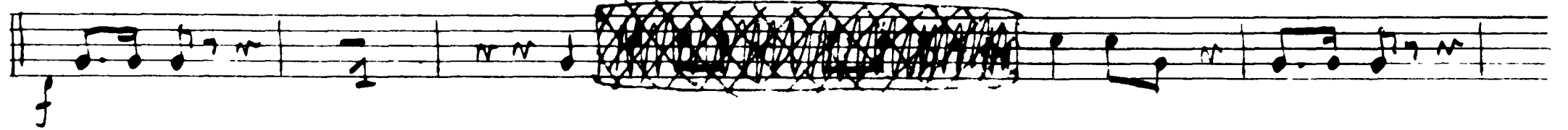
Tchaikovsky — Swan Lake, Op. 20

Timpani

8



61



Tchaikovsky — Swan Lake, Op. 20

Timpani

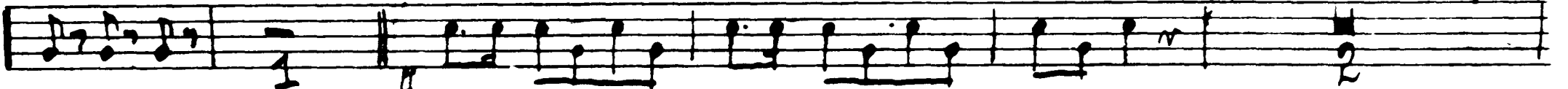
Timp.

9

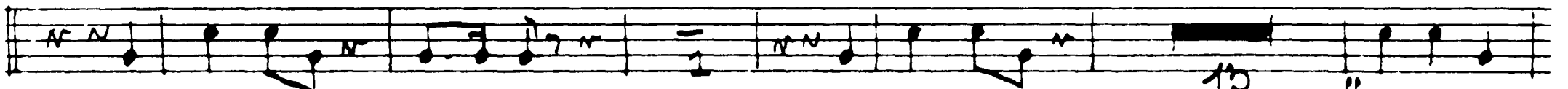


mf

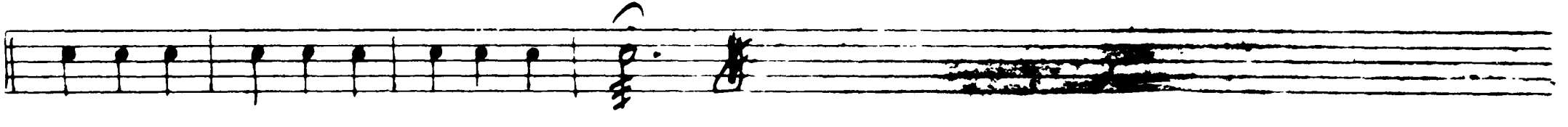
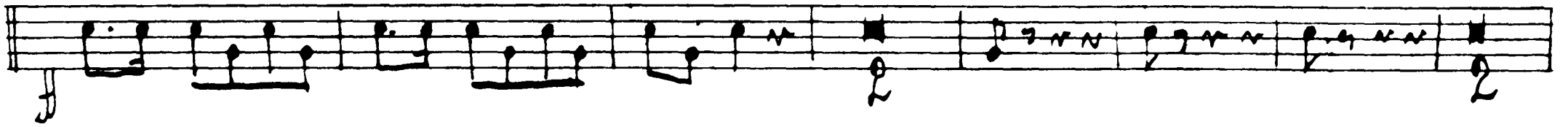
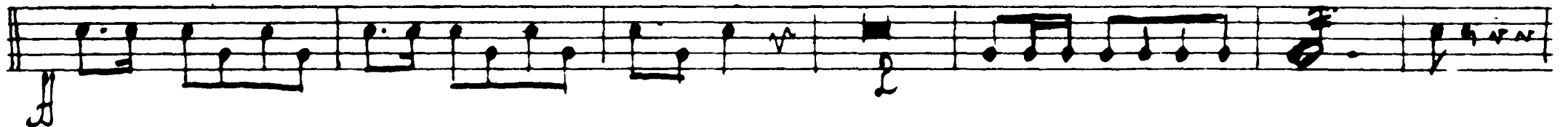
64



65



66



Finale

H,

Andante

67



18

f

p

Forosubito

Tchaikovsky — Swan Lake, Op. 20

Timpani

10

2 3 4 5 6 7 8 9 10 11 12 13 14 15

I. Akt

H, Fis,

No. 10

Moderato

1 8 12

Piu mosso

52

10

D, Cis, C,

No. 11

3 Allegro moderato

5

Moderato

Piu mosso

25 23 15

4 Allegro vivo

91

7 28 28 9

Andantino
Andantino
Andantino
Andantino
Andantino

Cis, H, A,

91-12

Allegro

Allegro
Allegro
Allegro
Allegro
Allegro
Allegro
Allegro

Moderato

Tchaikovsky — Swan Lake, Op. 20

No 13 Timpan

E, H, A,
12

Tempo di Valse

17
36 16 p cresc.
12 18
p cresc. f 10 pp
mf 15 pp mf 32
19 Moderato assai 20 Molto più mosso
34 8 f

E, H, A,

21 Tempo di Valse

22
32 16 pp mf 15
pp 32

Cit.

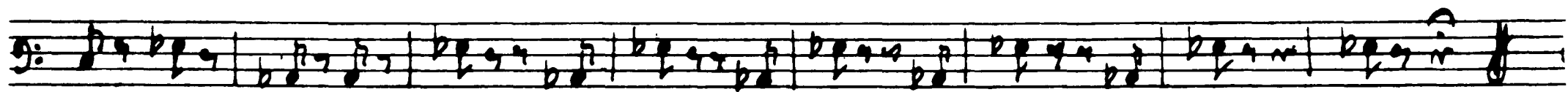
25 Andante

Harfe

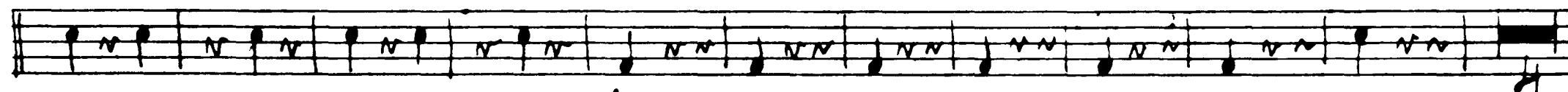
26 Andante non troppo

27 Più mosso

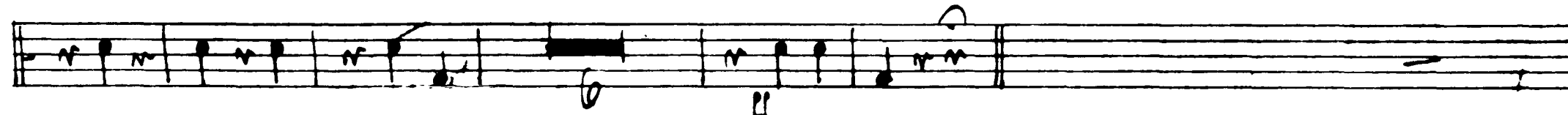
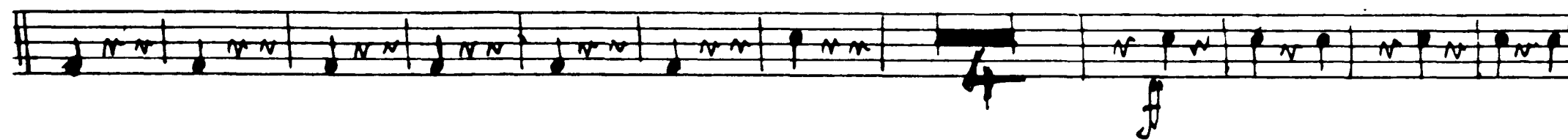
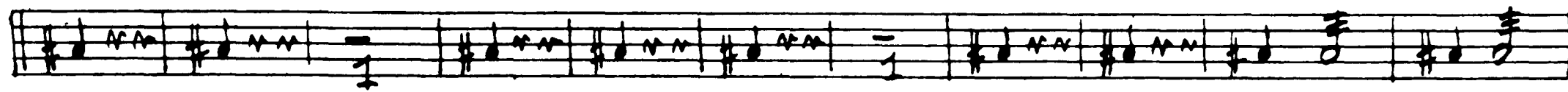
25 24 f
25 Andante Harfe 26 Andante non troppo 27 Più mosso
7 Cadenz 8 25 9
28 29 30 Cello Solo
31 Tempo I 32 Allegro Più mosso
25 24 f



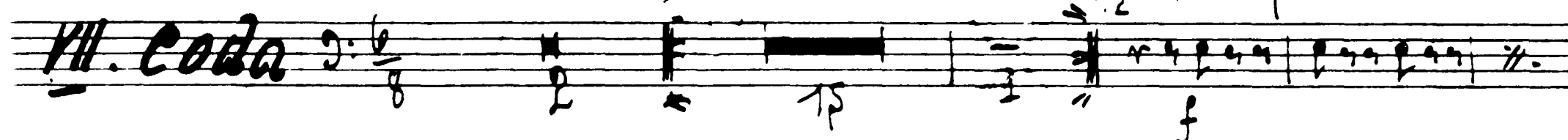
33 *Tempo di l'aise*



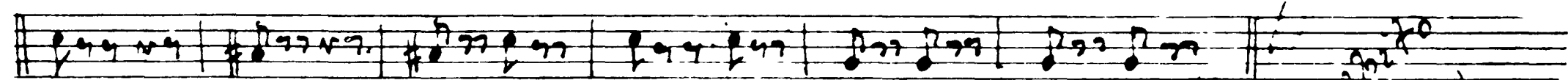
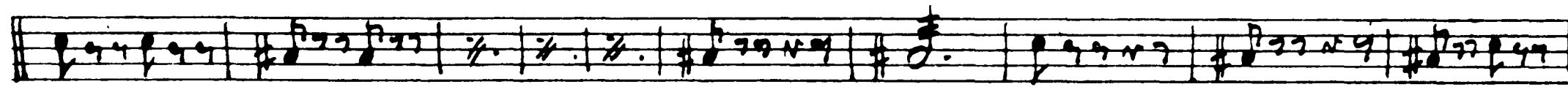
34



Allegro vivace 35



VII. Coda



Forcissimo subito

Tchaikovsky — Swan Lake, Op. 20

14

71

36

37

1 2 3 4 5 6

Rit

310 14

H, Fis 38 Moderato

39 1 2 3 4 5 6 7

18 f 12

Piu mosso

10

311 15

C, F, B, Allegro giusto

1 2 3 4 5 6 7 8 9 10 11 12

f f

3 1 2 3 4 5 6

24 f

Tchaikovsky — Swan Lake, Op. 20

71

15

7 8 9 10 11 , 4

5

f

mf

6 2 3 4 5 6 7 8 9 10 11

f

16

F, B, C, 8 Moderato assai

Allegro vivo

f

mf

f

mf

Tchaikovsky — Swan Lake, Op. 20

71

16

10

11

~~91-17~~

R, A, E, S, 13 Allegro Tromb. Piston

2 Clar. Solo

14 Tempo di Valse

15 Tromb. Piston

2 Clar. Solo

16 Tempo di Valse

17 Tromb. Piston

2 Clar. Solo

18 Tempo di Valse

19

Tchaikovsky — Swan Lake, Op. 20

20 21 22

B. Pos.

23 24 25

2 3 4 5 6

No 18

G, As, Bs, 26 Allegro

225 *mf*

Allegro Tromb. Piston

27 *Allegro giusto*

No 19

F, As,

28 *Moderato assai*

Intrada

12 22 24

Tambourin

12 6

30 *Allegro clar. Solo*

Var. I.

17 5

G,

32 *Flauto Solo* 30 *Andante con moto* 34

5 32 34 18

Handwritten flourish or signature.

Tchaikovsky — Swan Lake, Op. 20

71

18

2 3 4 5 6 7 8 2 3 4 5 6 7 8

mf poco a poco cresce. *ff*

18 19

36 Moderato

F, Es, Var. I. 36

37 Allegro

Var. II. 37

38

f

Moderato

Harfe Solo

39 Allegro semplice

Oboe Harfe Solo

F, G, Var. III. 39 40 41

40 Pizzissimo

41 Allegro molto

42

As, Es, Coda 41 42

42

Tchaikovsky — Swan Lake, Op. 20

T.1

5 6 7 8

1 2 3 4 5 6 7 8

44

No 20

A, B

Moderato assai

45 *Allegro moderato*

46 *Vivace*

48 2 3 4 5 6 7 8 9 10 11 12 13 14 15

Tchaikovsky — Swan Lake, Op. 20

20

No 21

I, H,
Cis,

49 *Allegro non troppo*

50

51

52 *Lo stesso tempo*

2 3 4 5 6 7 8 9 10 11 12

13 14 15 16

53 *Pizzissimo*

No 22

A, D, G *Allegro moderato*

54 *Andantino*

Molto più mosso

55 *Presto*

56

57

erese

No. 23

A. D.

Tempo di Mazurka

58

59

60

61

62

63

64

65

66

67

68

69

70

71

72

73

74

75

76

77

Tchaikovsky — Swan Lake, Op. 20

No 24 71

F, D,

Allegro

22 70 71 72 Valse 73 Allegro vivo

74 *L'istesso tempo*

ff p f

75 1 2 3 4 5 6 7 8 9 10 11

12 13 14 15 16 17 18 19 20

IV. Akt

No 25

A, E, Moderato

6 1 6 1 1 1

ff 5 pp

No 26

2 Allegro non troppo

p 2 3 4 5 6 7 8 9 10 11 12 13 14 15 poco a poco cresc.

1 2 3 4 5
6 7 8 9 10 11 12 13 14 15 19

B, F, *91 = 27*
Moderato

6 7 8 9 10 11 12 13 14 15 16

91 = 28

F, B, E, *Allegro agitato*

13 *Molto meno mosso* *Allegro ritace*
14 *Allegro ritace*
15 *a poco cresc.*

No. 29 Finale T1

E, F#is, H.

24 *17 Andante* 18 1 2 3 4 5 6 7 8 9 10 11 12 13 14 15 16 17

19 *Allegro agitato* 20 21

22 23 *Moderato e maestoso*

24 25

26 *Meno mosso*

27 *Moderato* 28

27 *Moderato* 28

Violin Solo

D, A, E,

Andante semplice

19 *cadenz* 59

Tchaikovsky — Swan Lake, Op. 20

Timpani

Allegro vivo

Musical notation for the first section of the Timpani part, marked *Allegro vivo*. It consists of three staves of music. The first staff begins with a treble clef, a 2/4 time signature, and a key signature of one sharp (F#). The music features a rhythmic pattern of eighth and sixteenth notes. The second staff contains a measure with a whole rest, marked with a '36' and a dynamic marking 'f'. The third staff also contains a measure with a whole rest, marked with a '7'.

Presto

Musical notation for the second section of the Timpani part, marked *Presto*. It consists of two staves of music. The first staff begins with a treble clef and a dynamic marking 'ff'. The music features a rhythmic pattern of eighth and sixteenth notes. The second staff contains a measure with a whole rest, marked with a '7', and a dynamic marking 'ff'.

A series of ten empty musical staves, each consisting of five lines, provided for the continuation of the Timpani part.