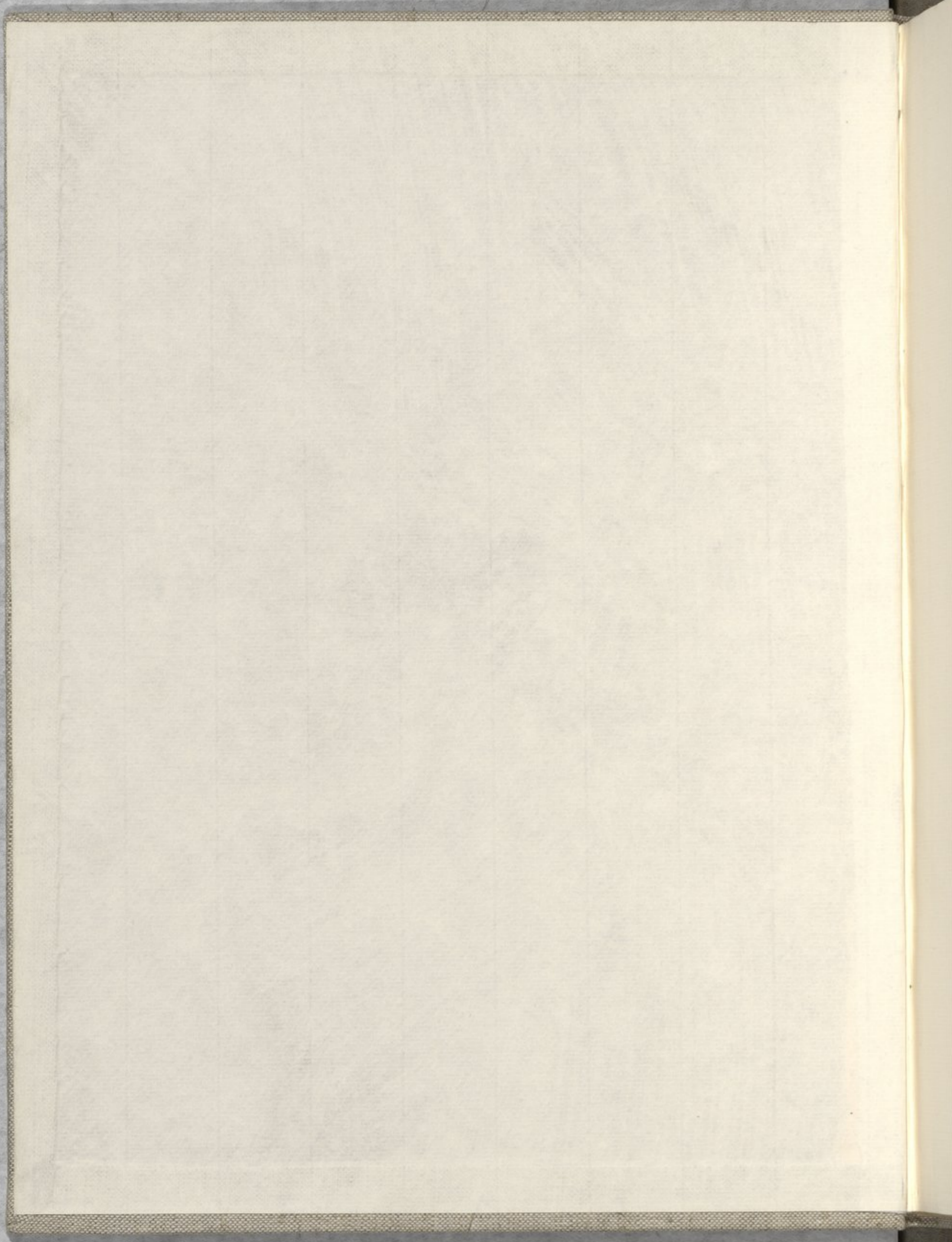


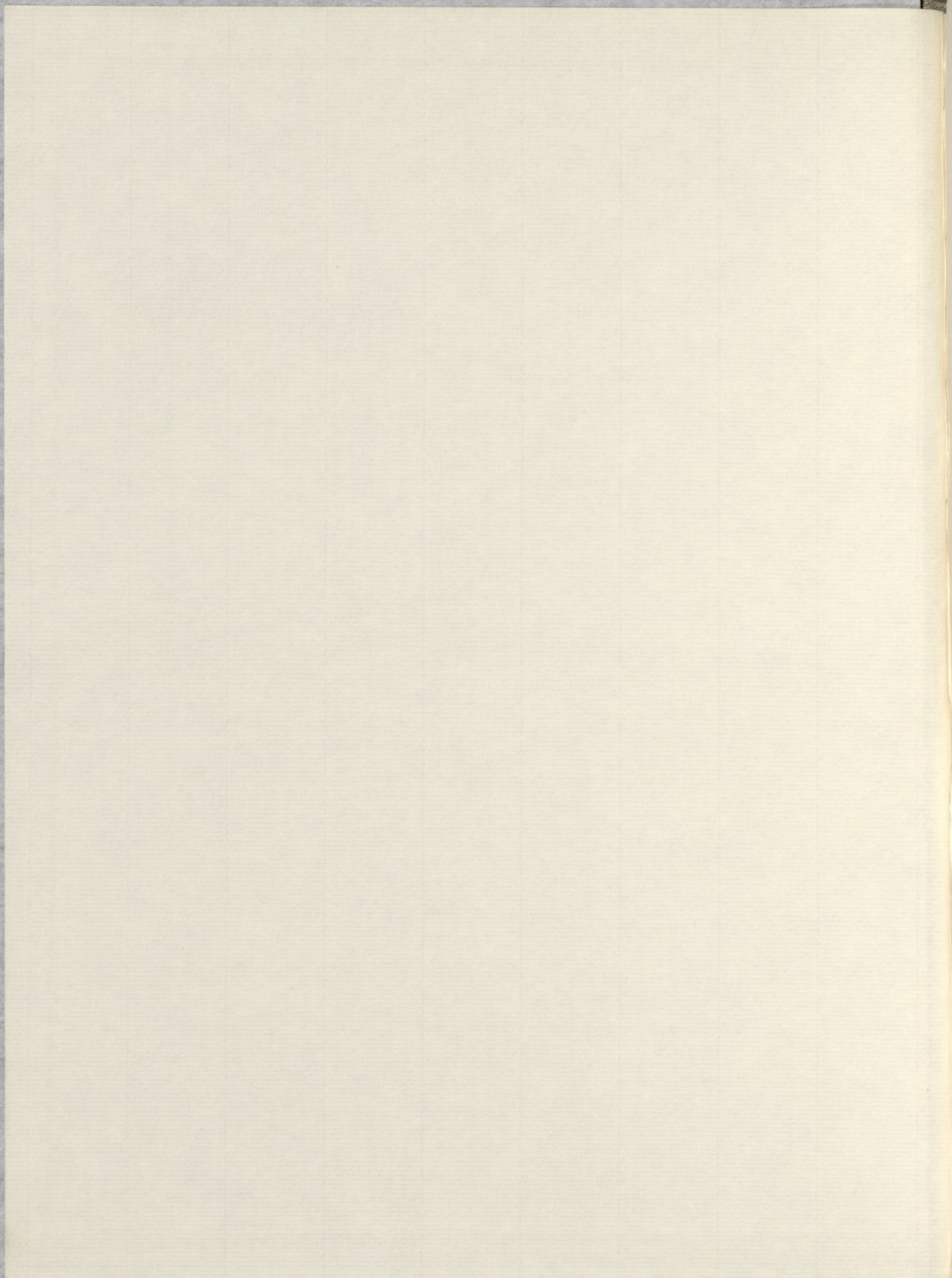
VIVALDI - CONCERTI - LAUDATE DOMINUM

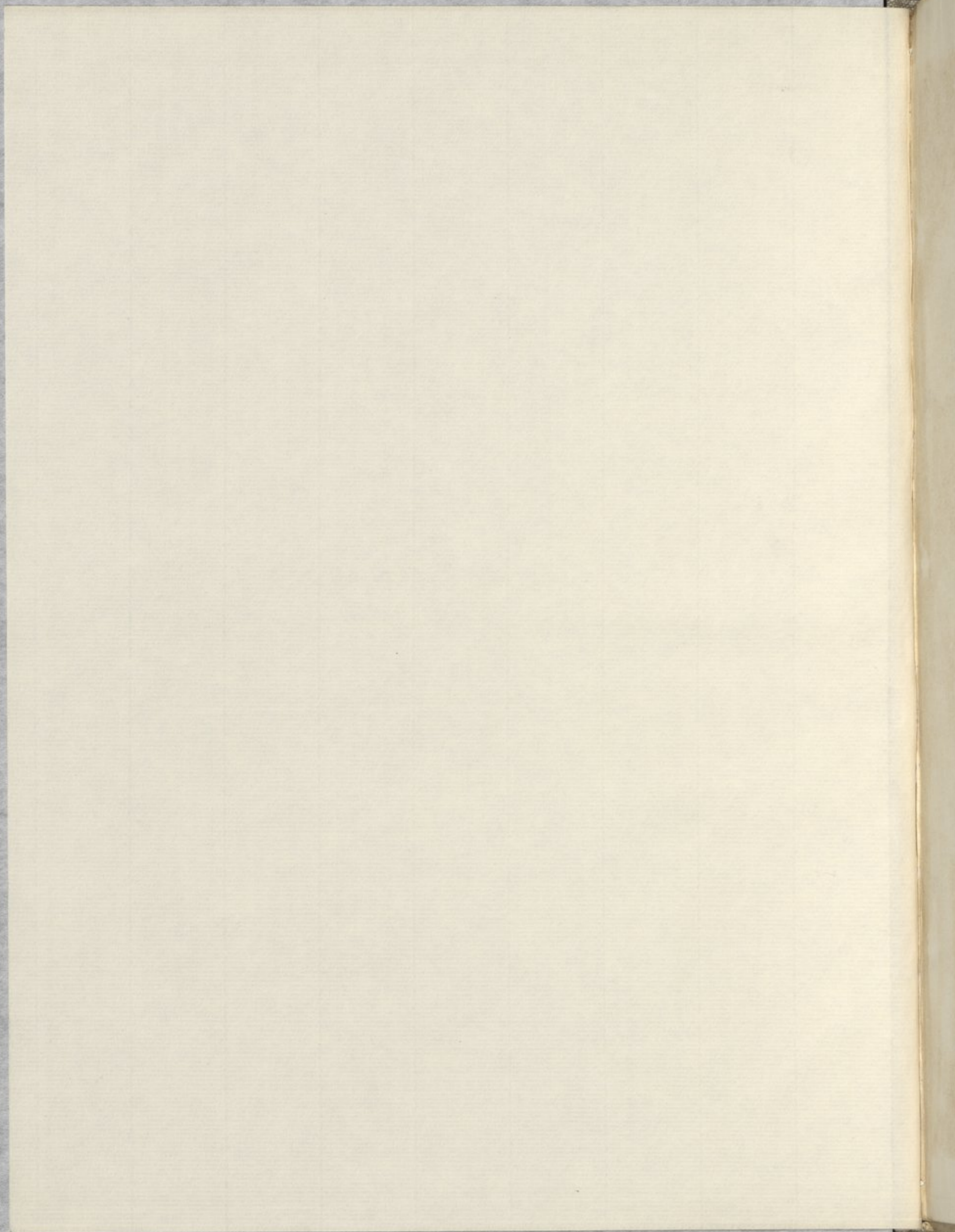
MUSIQUE

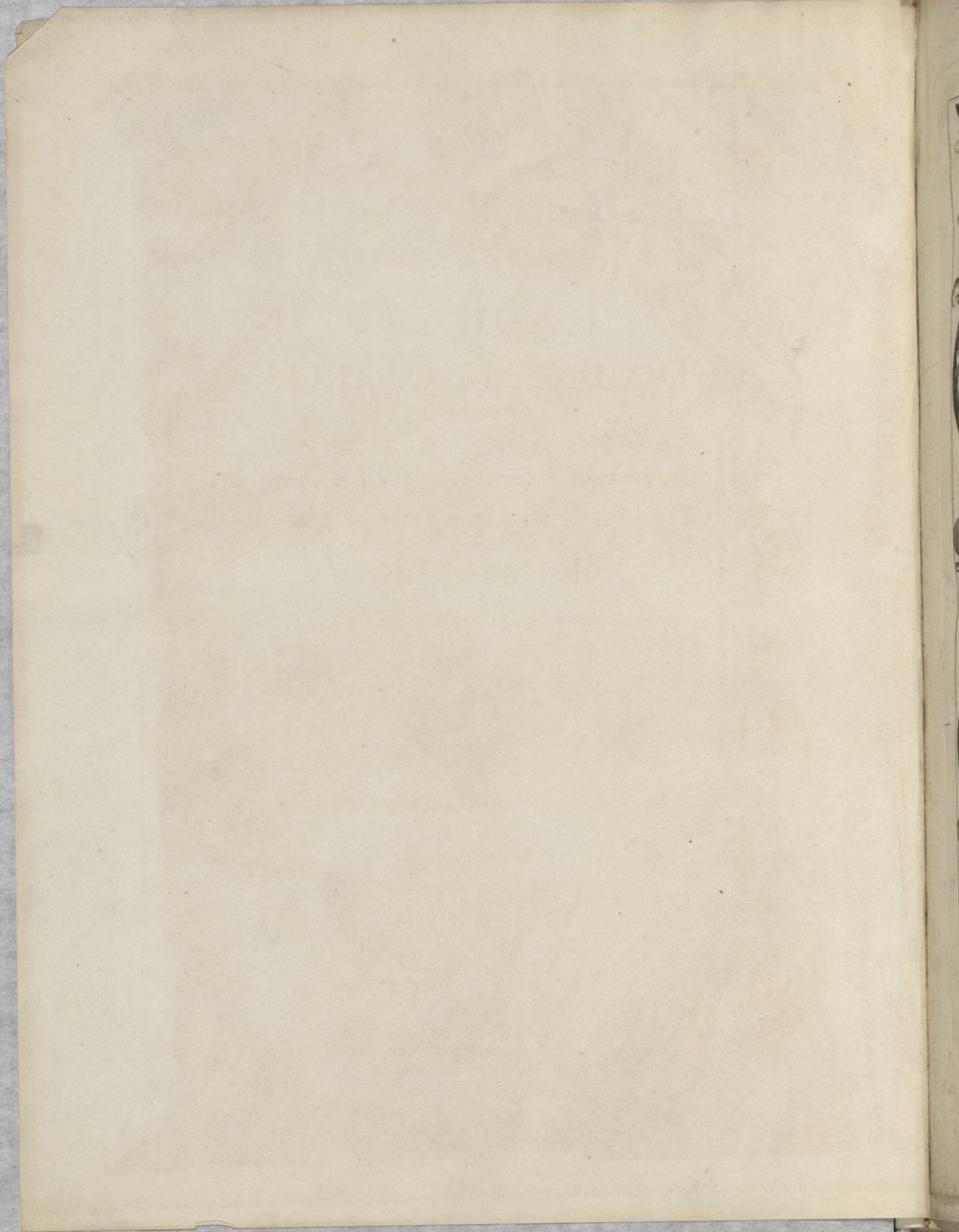
Rés. F

902





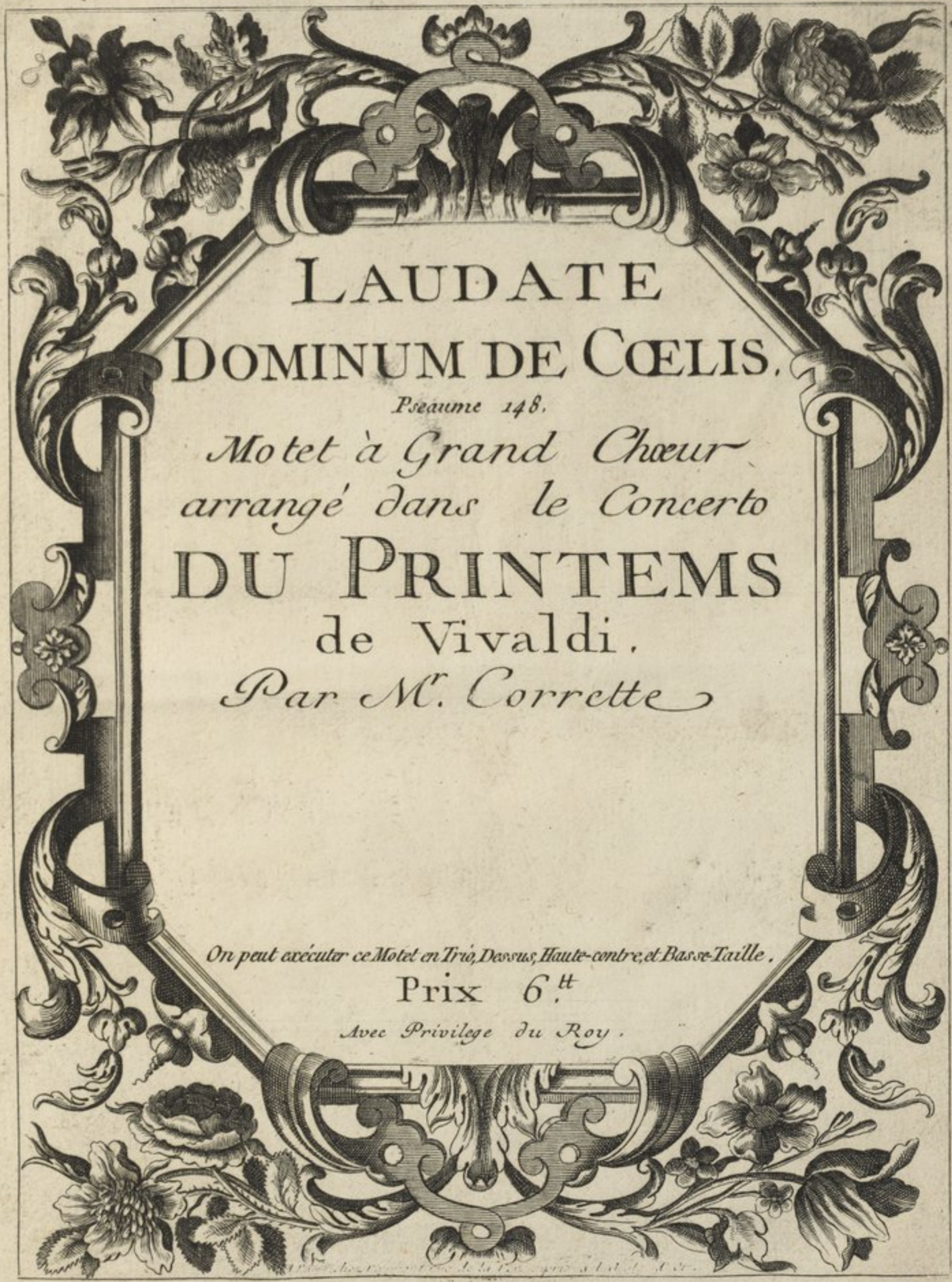




C. DE M.
N^o 14968

197

5
~~2400~~



LAUDATE
DOMINUM DE CŒLIS.

Pséaume 148.

*Motet à Grand Chœur
arrangé dans le Concerto
DU PRINTEMPS
de Vivaldi.
Par M. Corrette*

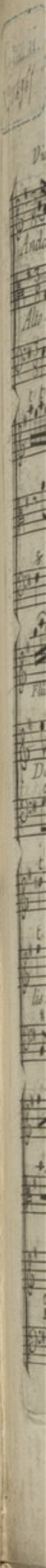
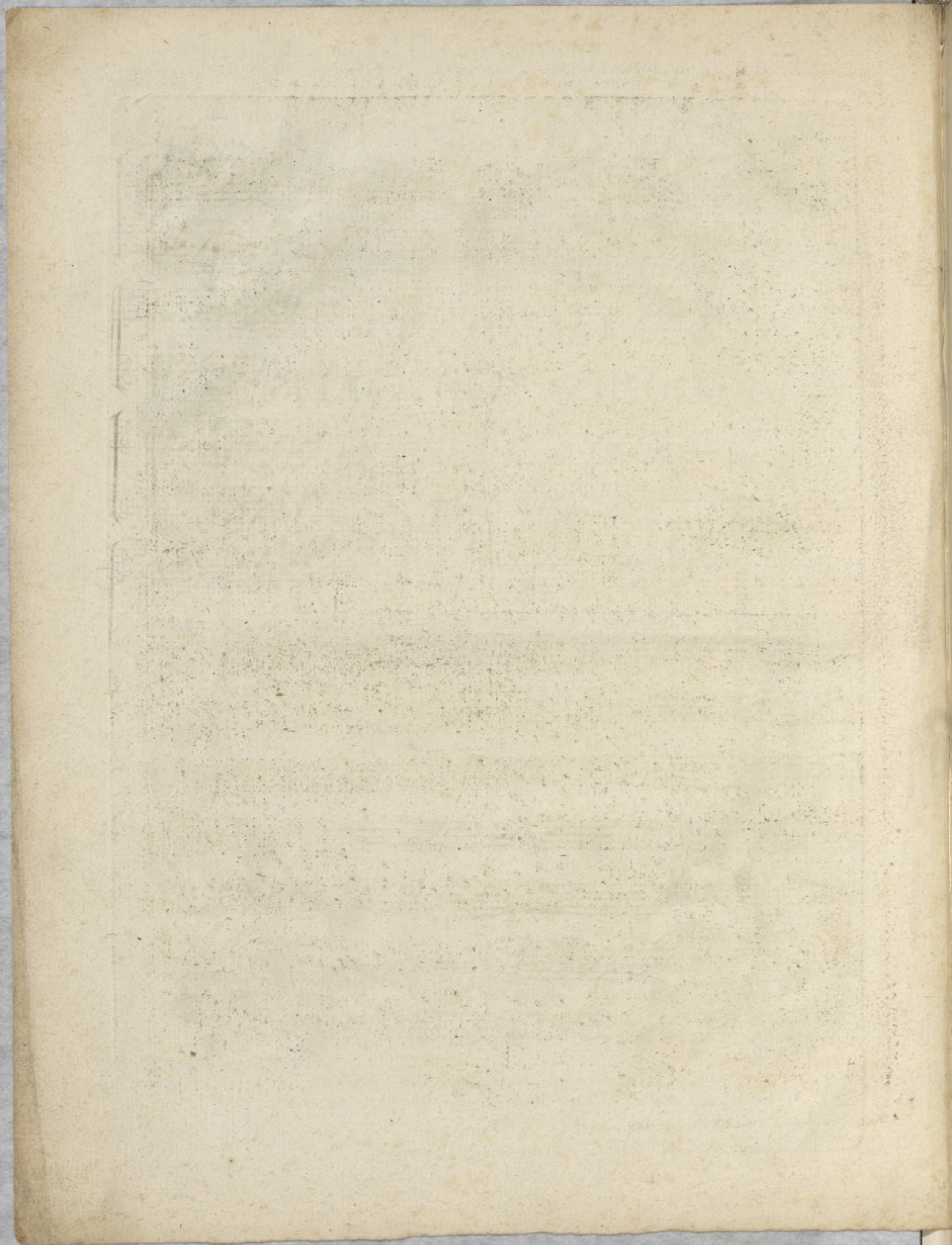
On peut exécuter ce Motet en Trio, Dessus, Haute-contre, et Basse-Taille.

Prix 6th

Avec Privilège du Roy.

*A PARIS aux adresses ordinaires de Musique
et Chez l'Auteur Rue des Prouvaires.
Et à Lyon*

Mus. F. 902



C. 14969

LAUDATE DOMINUM

Violons et Flûtes.

Andante. *Piano.* *Forte.*

Alto.

Flûte. *Tutti.* *Flûte.*

Do-mi-num de Coe-lis: Lau-da-te e-um in excel-sis Lau-date Dominum de Coe-

lis: Lau-da-te e-um in excel-sis

Vio. e. Piano. *Flûtes.* *Tutti.*

Flûte.

Vio.

Lau-da-te Dominum de Coe-lis: Lau-da-te

2

...te eum in ex-cel-sis: Laudate eum, Omnes Angeli e-jus: Lau =

da-te Lau-da-te eum, Omnes vir =

Flûte.

Alto.

= tutes e-jus, Laudate Dominum de Cae =

lis: Lau-da-te eum in ex-cel-sis

Lauda-te Lau =

tutti.

da.....te omnes Angeli e - jus *Lauda*

Flûte. Solo.

te *Lauda*.....te *Lauda*

Adagio.

te *Lauda*.....te *Lau-da*

.....te e - um omnes vir - tu - tes e - - jus

Adagio. *Choeur.* *Le Printemps de Vivaldi.*
Allegro.

Crescendo. *P* *Crescendo.* *t* *P* *F*

Flutes. *Laudate Dominum de Coelis Lau =*

Alto. *Laudate Dominum*

Laudate Dominum

Laudate Dominum

Laudate Dominum

Laudate Dominum

Forte. *Laudate Dominum*

Basson. *Crescendo.* *F* *Crescendo.* *5* *7+* *8* *Laudate Dominum*

Crescendo. *F* *P* *Alto comme la B. Taille.*

Piano. *Forte.*

date eum in excel-sis; Lau-date Dominum de Coelis Laudate eum in excel-sis Lau =

de Coe - - lis, Laudate Dominum de Coelis Laudate eum in excel-sis Lau =

de Coe - - lis, Laudate Dominum de Coelis Laudate eum in excel-sis Lau =

de Coe - - lis, Laudate Dominum de Coelis Laudate eum in excel-sis Lau =

de Coe - - lis, Laudate Dominum de Coelis Laudate eum in excel-sis Lau =

Piano.

Piano.

da... te eum Lauda... te eum omnes Angeli e jus Lauda... te eum Lauda... te eum
 da-te eum Lauda... te eum omnes Angeli e jus Lauda... te eum Lauda... te eum
 da-te eum Lauda... te eum omnes Angeli e jus Lauda... te eum
 da-te eum Lauda... te eum omnes Angeli e jus Lauda... te eum Lauda... te eum
 da-te eum Lauda... te eum omnes Angeli e jus Lauda... te eum Lauda... te eum

Forte. *Solo.*

omnes vir-tu-tes ejus. *3. Violon. Solo.* *Solo.* *Solo.*
 omnes vir-tu-tes ejus. Laudate eum sol et lu - na: Laudate Lau =
 omnes vir-tu-tes ejus.
 omnes vir-tu-tes ejus.
 omnes vir-tu-tes ejus.
 omnes vir-tu-tes ejus.

Forte.

6

date Laudate eum sol et lu.....

na; Laudate eum Lau - da te e =

Violons et Corsos.

Lau =

Lau =

Lau =

Lau =

Lau =

Lau =

um, om-nes stel - - lae et lu... men Lau =

Piano Crescendo.

= da-te eum coe-li coe-lo-rum et a...

= da-te eum coe-li coe-lo-rum et a...

= date eum coe-li coe-lo-rum et a...

= date eum coe-li coe-lo-rum et a...

= date eum Lauda-te eum coe-li coe-lo-rum et a...

4 3 4 3

..... quæ om-nes quæ super cœ - - los sunt lau
 quæ omnes quæ super cœ - - los sunt lau dent nomen Do - - - mi =
 quæ omnes quæ super cœlos sunt lau dent ;
 quæ om-nes quæ super cœ - los sunt lau
 quæ om - nes quæ super cœ - los sunt laudent

icy l'Alto comme la H.C.

..... dent nomen Do - mi - ni Qui - a ipse di - xit et facta sunt
 = ni lau - dent nomen Do - mi - ni Qui - a ipse di - xit et facta sunt
 nomen Domi - ni Qui - a ipse di - xit et fac ta sunt
 dent nomen Do - mi - ni Qui - a ipse di - xit et facta sunt
 nomen Domi - ni Qui - a ipse di - xit et fac ta sunt

icy l'Alto comme la B.T.

ipsemandavit etcreata sunt. *Alto.*
 ipse mandavit et creata sunt,
 ipse mandavit et creata sunt,
 ipse mandavit et creata sunt.
 ipse mandavit et creata sunt. Sta-tu-it e a in æ-ter-...

num, et in sæculum sæ-cu-li: Præcep-tum po-su-it et non præ-te-ri =

bit Præ-cep-tum po-su-it et non præ-te-ri-bit non non non

Flûte. Chœur.

Lau =
Lau =
Lau =

non non præ-te-ri-bit non ÷ ÷ ÷ non præ-te-ri-bit

icy l'Alto
comme la
B. Taille.

da..... te e-um Lau-da-te eum omnes virtu-tes e-jus.

da-te e-um Lau- omnes virtu-tes e-jus.

da..... te e-um Lau-te eum omnes virtu-tes e-jus. Solo.

da-te e-um Lau-da-te e-um omnes virtu-tes e-jus. Laudate Dominū de

da-te e-um Lau-date eum omnes virtu-tes e-jus. Basson.

6/4 3 6/4 3 * 6 7

ter... ra Dra-co... nes, Draco... nes et omnes abys...

Forte.

Solo.

Adagio.

si: Draco... nes, Draco... nes, et omnes a =

Tasto solo.

Allegro. Chœur.

Les Flûtes et les Haut-bois comme le Dessus chantant.

I - - - gnis , gran - - do , nix , nix ,

I - - - gnis , gran - - do , nix , nix ,

I - - - gnis , gran - - do , nix , nix ,

bys... si I - - - gnis , gran - - do , nix , nix ,

I - - - gnis , gran - - do nix , nix ,

Forte.

1^{re} et 3^e Vio.

3 3 3 3 3 3 3 3

glaci-es, Ignis, grando,

glaci es Ignis, grando,

glaci es Ignis, grando,

glaci es Ignis, grando,

glaci es Ignis, grando, 5

Ignis, gran-do, nix, glaci-es,

Ignis, gran-do, nix, glaci-es,

Ignis, gran-do, nix, glaci-es,

Ignis, gran-do, nix, glaci-es,

Ignis, gran-do, nix, glaci-es,

5

glaci- es spi-ri- tus procellarum Quae faci- unt ver- bum

glaci- es spi-ri- tus procellarum Quae faci- unt ver- bum

glaci- es spi-ri- tus procellarum Quae faci- unt ver- bum

glaci- es spi-ri- tus procellarum Quae faci- unt ver- bum

glaci- es spi-ri- tus procellarum Quae faci- unt ver- bum

5 6 7 6 5 6 4

Vio. Fl. et Hautbois.

e- - jus Lau- da- - - te eum ; omnes virtu- tes e =

e- - jus Lau- da- - - te eum ; omnes virtu- tes e =

e- - jus Lau- da- - - te eum ; omnes virtu- tes e =

e- - jus Lau- da- - - te eum ; omnes virtu- tes e =

e- - jus Lau- da- - - te eum ; omnes virtu- tes e =

6 4 3 6 4 3 6 4 3 * 7 *

3.^o Vio.

jus *solo.*
jus *tasto solo.*

jus
jus
jus

jus *tasto solo.*

jus *tasto solo.*

jus *tasto solo.*

jus *tasto solo.*

jus *solo.* *jus* *tasto solo.* *jus* *tasto solo.* *jus* *tasto solo.* *jus* *tasto solo.* *jus* *tasto solo.*

jus

jus

jus

tasto solo.

Lauda-te Laudate Dominum de
la et lu...men *Lauda-te Laudate Dominum de*
Lauda-te Laudate Dominum de
Lauda-te Laudate Dominum de
Lauda-te Laudate Dominum de

7

Lauda-te Laudate Dominum de

la et lu...men

Lauda-te Laudate Dominum de

Lauda-te Laudate Dominum de

Lauda-te Laudate Dominum de

Lauda-te Laudate Dominum de

solo.

coelis Laudate e - um in ex - cel - sis. Lau - da - - - te Lau -

coelis Laudate e - um in ex - cel - - - sis.

coelis Laudate eum in ex - cel - sis.

coelis Laudate eum in ex - cel - sis.

coelis Laudate Lau - da - - - te eum in ex - cel - sis.

solo.

da te Lauda..... te Lau - da..... te e..... um omnes Angeli e =

7 6 6 #1 6 6 7

On est point obligé de garder la Mesure dans le point d'Orgue.

jus Lauda - te eum omnes virtu...

tes e..... jus Lauda..... te eum Lauda..... te eum omnes Angeli e =

Lauda..... te eum ; omnes Angeli e =

Lauda..... te eum ; omnes Angeli e =

Lauda..... te eum ; omnes Angeli e =

Lauda..... te eum ; omnes Angeli e =

Lauda..... te eum ; omnes Angeli e =

jus Lauda... te eum omnes vir-tu-tes e-jus
 jus Lauda... te eum omnes vir-tu-tes e-jus
 jus Lauda... te eum Lauda-te eum omnes vir-tu-tes e-jus
 jus Lauda... te eum Lauda-te eum omnes vir-tu-tes e-jus
 jus Lauda... te eum Lauda-te eum omnes vir-tu-tes e-jus

6/4 3 6/4 3 6/4 3

Largo.

La partie de Flûte comme la Haute-contre. Les Cors Tacet.

V.º 1.º
 2.º V.º solo.
 Alto e Fagoto.
 Mon-tes et om-nes col...

les: Ligna fruc-ti se-ra et om-nes ce - - - dri; Bes-ti =

This system contains the first system of a musical score. It features a vocal line on a treble clef staff with a key signature of three sharps (F#, C#, G#) and a common time signature. The vocal line begins with a dotted line and the lyrics "les: Ligna fruc-ti se-ra et om-nes ce - - - dri; Bes-ti =". The accompaniment consists of two staves: a right-hand staff with a treble clef and a left-hand staff with a bass clef. Both accompaniment staves feature a complex, rhythmic pattern of sixteenth notes.

æ, et uni-ver-sa pecora, Ser-pen.....tes, et vo-lu-cres

This system contains the second system of the musical score. The vocal line continues with the lyrics "æ, et uni-ver-sa pecora, Ser-pen.....tes, et vo-lu-cres". The accompaniment continues with the same rhythmic pattern as in the first system. A triplet of sixteenth notes is marked with a "3" above it. The system concludes with a fermata over the final note of the vocal line, which is marked with a "t" and a "*w".

Choeur
a voix basse excepté le Récit de Haute-contre Régis. 19

Piano.
Bes-ti-æ et univer-sa
Les Flûtes comme la Haute-Contre.
pen-na - - tæ. Re - - ges ter - ræ, et om-nes
*Alto e Fagotto.
Haute contre
et Tailles.*
Piano. Mon-tes et omnes colles
Les Croches égales. Mon - - tes et omnes colles
*Les Basses-tailles
et les Basses-contras.* Vio^{lle}
*Organo
e Contrabasso.*

pe - - coras erpen... tes et vo-lu-cres penna...
po - pu - li prin-ci-pes et omnes ju... di ces ter...
ligna fructi fe-ra et omnes ce-dri Mon - tes et omnes colles ligna fructi fe-ra et omnes ce -
ligna fructi fe-ra et omnes ce-dri Mon - tes et omnes colles ligna fructi fe-ra et omnes ce -

ta. Ser-pen...tes, et volucres penna-
 ra. et om-nes ju-di-ces ter-ræ. lau-dent
 dri; Mon-tes et omnes colles: Ligna fructifera et omnes cedri; Montes et omnes colles:
 dri; Mon-tes et omnes colles: Ligna fructifera et omnes ce-dri; Montes et omnes colles:
 ta. *Forte.* laudent nomen Domi-ni.
 no-men Do-mi-ni, *Chœur.* laudent nomen Domi-ni.
 laudent nomen Domi-ni.
 Ligna fructifera et omnes ce-dri; *Forte.* laudent nomen Domi-ni.
 Ligna fructifera et omnes ce-dri; laudent nomen Domi-ni.
Forte. 6 6 0
 5 4 7

Detailed description of the musical score: The page contains a complex musical score with multiple staves. The top section features a vocal line with lyrics 'ta. Ser-pen...tes, et volucres penna-' and a keyboard accompaniment. Below this, another vocal line with lyrics 'ra. et om-nes ju-di-ces ter-ræ. lau-dent' is accompanied by a keyboard part. The middle section consists of two vocal lines with lyrics 'dri; Mon-tes et omnes colles: Ligna fructifera et omnes cedri; Montes et omnes colles:' and a keyboard accompaniment. The bottom section features a vocal line with lyrics 'ta. laudent nomen Domi-ni.' and a keyboard accompaniment. The final part of the page includes a vocal line with lyrics 'no-men Do-mi-ni, Chœur. laudent nomen Domi-ni.' and a keyboard accompaniment. The score concludes with the lyrics 'Ligna fructifera et omnes ce-dri; Forte. laudent nomen Domi-ni.' and a keyboard accompaniment. The page is numbered '20' in the top left corner.

Allegro.

Pastorale.

21

Violons.

Piano.

Solo. Piano.

Ju-venes et Vir-gi-nes se-nes se-nes cum junio --- ri-bus,

lau-dent nomen Domi-ni qui-a e-xal-ta-tum est no-men e-jus soli =

Forte.

Forte.

= us no-men e-jus soli us.

6 6 5 7 7 5 6 6 6 3 5 4

Piano *Forte* *Haut-bois seul.*

Basson.

7 5 6 5 4 3

This system contains the musical notation for the Haut-bois and Basson parts. The Haut-bois part is written in treble clef with a key signature of three sharps (F#, C#, G#) and a common time signature. It features dynamic markings for *Piano* and *Forte*, and the instruction *Haut-bois seul.*. The Basson part is written in bass clef with the same key signature and time signature, and is marked *Basson.*. Fingerings are indicated with numbers 7, 5, 6, 5, 4, and 3.

Solo.

Ju - - ve - nes et Vir - gines se - nes se - nes cum junio - - ri =

This system contains the musical notation for a vocal solo. It is written in treble clef with a key signature of three sharps and a common time signature. The lyrics are: *Ju - - ve - nes et Vir - gines se - nes se - nes cum junio - - ri =*. The instruction *Solo.* is placed above the first staff.

bus lau - dent nomen Do - mi - ni Qui - a exal - ta - tum

This system continues the vocal solo. The lyrics are: *bus lau - dent nomen Do - mi - ni Qui - a exal - ta - tum*. The musical notation includes various notes, rests, and dynamic markings.

est no - men ejus so - li - - us no - men e - jus soli - - us

This system concludes the vocal solo. The lyrics are: *est no - men ejus so - li - - us no - men e - jus soli - - us*. The musical notation includes various notes, rests, and dynamic markings.

Comi.

Choeur.

23

Violons et Cors.

Piano.

L'Alto comme la Basse-taille.

Ju - - - venes et vir - - - gines se - - nes, sepes, cum junioribus

Ju - - - venes et vir - - - gines se - - nes, senes, cum junioribus

Ju - - - venes et vir - - - gines se - - nes, senes, cum junioribus

Ju - - - venes et vir - - - gines se - - nes, cum junioribus

Ju - - - venes et vir - - - gines se - - nes, cum junioribus

Forte.

lau - - dent nomen Do - - - mini Quia exalta... tum est

lau - - dent nomen Do - - - mini Quia exalta... tum est

lau - - dent nomen Do - - - mini Quia exalta... tum est

lau - - dent nomen Do - - - mini Quia exalta... tum est

lau - - dent nomen Do - - - mini Quia exalta... tum est

Solo.

e - xal - ta tum est no - men e - jus so - li us

e - xal - ta tum est no - men e - jus so - li us

e - xal - ta tum est no - men e - jus so - li us

no - men e - jus so - li us no - men e - jus so - li us

no - men e - jus so - li us no - men e - jus so - li us

7 6 4 3 7* 8 6 4 3 7* 8

Duo.

Confessio e - - jus Confessio e - -

Confessi - o e jus super

6 5

C. DE M.
N° 14968

musical notation for the first system, including vocal lines and piano accompaniment.

jus super caelum et ter - - ram Et exal - ta - - vit cor - - - - - nu po - pu =

coe - - lum et ter - - ram et exal - ta - vit cor =

Chœur.

musical notation for the Chœur section, including vocal lines and piano accompaniment.

li su - - - - - i Ju - - venes et Vir - - - gines se - nes se - nes

Ju - - venes et Vir - - - gines se - - - nes

Ju - - venes et Vir - - - gines se - nes se nes

Ju - - venes et Vir - - - gines se - nes se nes

= nu po - pu - gli - - Ju - - venes et Vir - - - gines se - - - nes

Piano.

Ioy l'Alto comme la Taille. Ioy l'Alto comme la B.T.

cum juni - o ri - bus lau - dent no - men Do - mini

cum ju - nio ri - bus laudent no - men Do - - - mi - ni

cum ju - nio ri - bus lau - dent no - - men Do - mini

cum ju - nio ri - bus laudent no - men Do - - mi - ni

cum ju - nio ri - bus laudent no - men Do - - mi - ni

6 9 5 9 5 * 6 9 5 5 *

Forte.

Quia exalta tum est no - men e - jus so - li - - us

Quia exaltatum est no - men e - jus so - li - - us

Quia exaltatum est quia e - xaltatum est no - men e - jus so - li - - us

Quia exal - ta - - tum est no - men no - men e - jus so - li - - us

Quia exal - ta - tum est no - men e - jus so - li - us

Forte. 7 7 7

no - men e - jus so - li - - us

no - men e - jus so - li - - us

no - men e - jus so - li - - us

no - men e - jus so - li - - us

no - men e - jus so - li - - us

Piano.

Quia exalta - - tum est no - men e - jus so - li

Duo.

quia exalta - - tum est no - men

us no - men e - jus soli - - - us
 ejus so - li - - - us qui =

7 4 3 7 4 3

Tasto Solo.
Solo.
 no - men e - jus soli - - - us no - men e - jus soli - - - us
 = a exalta - - - tum est no - men ejus soli - - - us

2^e.V. *Piano.*
 3^e.V. *Piano. Solo.*
 Hym - nus Hym - nus om - ni - bus Sanc - tis e - - -

= jus Fi-li-is Is-ra-el Fi-li-is Is-ra-
 Alto. Alto e Corni.

= el po-pu-lo ap-pro-pin-quan-ti si

tutti.

L'Alto comme la B.T.

bi

Ju.....venes et vir-gi-nes se-nes se-nes

Ju.....venes et vir-gi-nes se-nes

Ju....venes et vir-gi-nes se-nes

Ju.....venes et vir-gi-nes se-nes

Ju - - venes et vir-gi-nes se-nes

6 3
4

Mineur.

cum juni-ori-bus lau.....dent no-men Do..... =

cum juni-ori-bus cum junio-ri-bus lau.....dent no..... =

cum junio-ri-bus cum junio-ri-bus .. laudent

cum ju-nio - - ri-bus lau-dent no-men lau..... =

cum juni-o ri-bus lau..... dent no-men laudent

4 5 4 * 5 4 * 4 5 4 * * 5

mi-ni qui-a exal-ta tum
 men Do-mi ni qui-a exal-tum
 nomen Do-mi-ni qui-a exal-tum
 dent no-men Do-mi-ni qui-a exal-tum
 est nomen e-jus so-li-us no-men e-jus so-li-tum
 est no-men e-jus so-li-tum est no-men e-jus so-li-us no-men e-jus so-li-tum
 est no-men e-jus so-li-us no-men e-jus so-li-tum

6 7 5 6 6 6 6 7

6 7 6 7 6 7 6

solo. *solo.* *t*

qui - a e - xalta

= jus soli - us

= li - us *Tasto solo.*

t *t* *t* *t*

tum est nome e - jus soli =

Cors *tutti.*

= us Qui - a exal - ta tum est exalta =

Qui - a exal - ta tum est quia exal =

Qui - a exal - ta - tum est nomen e - jus soli - - - us quia e - xal =

Qui - a exal - ta - tum est nomen e - jus soli - - - us quia exal =

Qui - a exal - ta - tum est nomen e - jus soli - - - us quia exal =

tum est no-men e-jus soli... us no =

ta..... tum est no-men e-jus so-li..... us

ta..... tum est no-men e-jus soli..... us no =

ta..... tum est no-men e-jus so-li..... us

ta..... tum est no-men e-jus so-li..... us

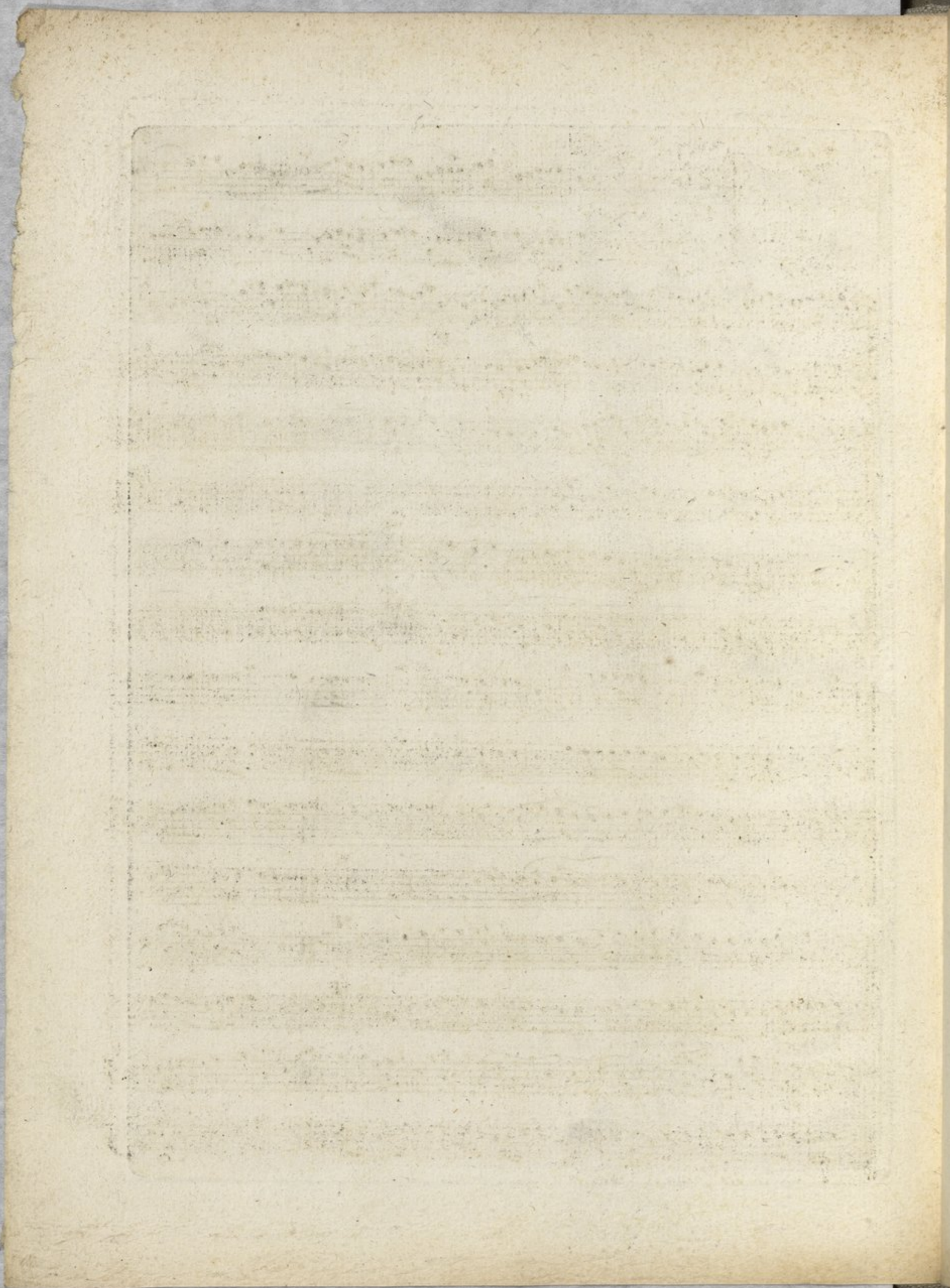
men e-jus so-li..... us

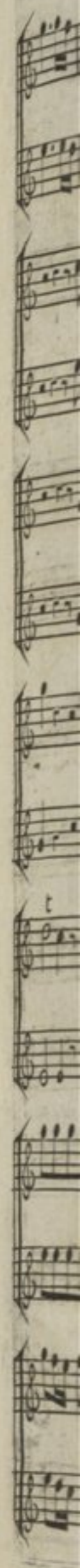
no-men e-jus so-li..... us FINIS

men e-jus so-li..... us

no-men e-jus so-li..... us

no-men e-jus so-li..... us



no. 1
Par
DESC
de
Chas


n° 1. Tacet. *Ton, E^h.* *Chœur.* 35

Parties
DES CORs
de n° 2.
Chasse.

Adagio. Allegro. *Piano.*

Forte. *P*

15 15 13 13 12 12 14 14 6 6 11 11

Largo Tacet.

This page contains a handwritten musical score for horns. It consists of 14 staves of music. The notation includes various note values, rests, and dynamic markings such as 'Forte', 'Piano', and 'Largo Tacet'. There are also numerical markings (15, 13, 12, 14, 6, 11) placed above some staves, likely indicating measure numbers or rehearsal marks. The score is written in a historical style with a clear, legible hand.

C. DE M.
N° 1496f

36

Chœur.

46 *Allegro.* P

F

9

9

18

18 *Piano.* F

10

10

FINIS.

This block shows the left edge of the page, where several staves of musical notation are visible. The notation includes notes, stems, and beams, though it is partially cut off by the page's edge.

