

Concerto FWV L:D9

Flauto traversiere I

J.F. Fasch (1688-1758)

[1.] Allegro

6

11

18

25

32

39

46

52

59

66

72

Musical score for Flauto traversiere I, measures 79-152. The score is written in treble clef with a key signature of two sharps (F# and C#). The music features various rhythmic patterns, including eighth and sixteenth notes, and rests. Dynamic markings include *p* (piano) and *f* (forte). A double bar line with a fermata is present at measure 145. A second ending bracket is shown at measure 84. Fingerings are indicated by '+' signs above notes.

Measures: 79, 84, 94, 100, 105, 111, 116, 122, 127, 133, 139, 145, 152.

158

163

170

181

192

198

204

210

217

226

235

241

248

254

2

4

5

3

3

p

f

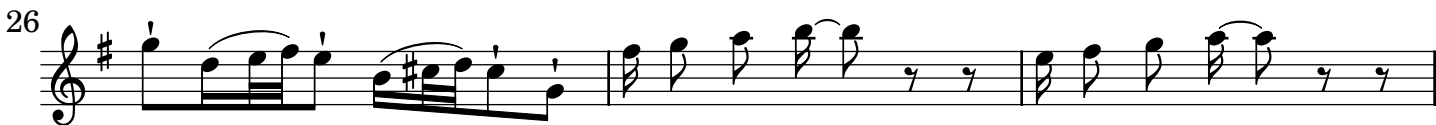
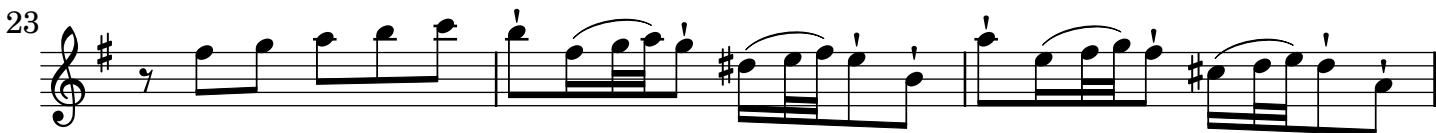
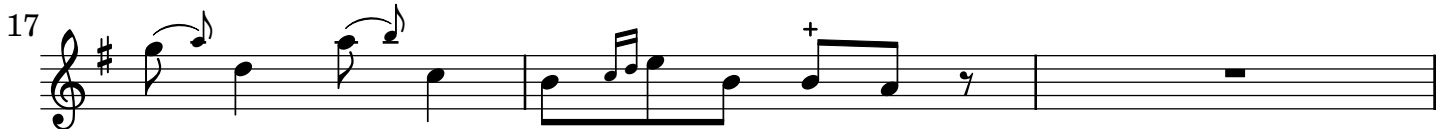
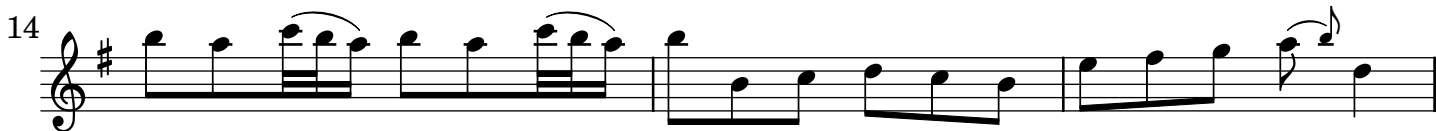
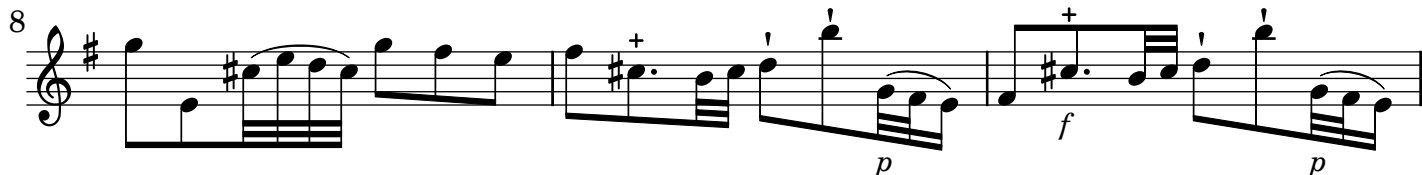
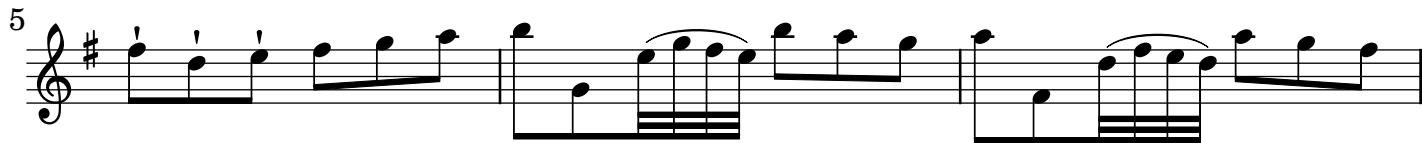
p

f

Solo

Tutti

[2.] Andante



32

35 *Tutti*

38 *Solo*

40

42

45

47

50

52

54 *Tutti*

57 *piano*

Detailed description: This is a page of a musical score for the first flute part of a concerto. The score is written in treble clef with a key signature of one sharp (F#). It consists of ten staves of music, numbered 32 through 57. The music features various rhythmic patterns, including eighth and sixteenth notes, and rests. Dynamic markings include *Tutti* at measures 35 and 54, *Solo* at measure 38, and *piano* at measure 57. There are also performance instructions such as '+' and 'y' above notes. The score ends with a double bar line at measure 57.

[3.] Allegro

Musical score for Flute I, measures 6 to 56. The score is written in treble clef, key signature of two sharps (D major), and 3/4 time signature. The tempo is marked [3.] Allegro. The score consists of 14 staves of music, with measure numbers 6, 10, 14, 18, 22, 26, 30, 34, 39, 43, 47, 52, and 56 indicated at the beginning of each staff. The music features various rhythmic patterns, including eighth and sixteenth notes, and rests. Dynamics markings include *f* (forte) at measure 47 and *p* (piano) at measure 43. A *Solo* marking is present above measure 47. A fermata is placed over a note in measure 47. A second ending bracket is shown above measure 56.

61

66 *Tutti* *Solo* *Tutti*

70

75 2

80

83

87

91

97 *Solo* *Tutti*

102

107 2

112 2

117

Detailed description: This page contains the musical score for the first flute part of a concerto. It consists of 12 staves of music, numbered 61 to 117. The key signature is one sharp (F#) and the time signature is 2/4. The score includes various musical notations such as eighth and sixteenth notes, rests, and dynamic markings. The markings 'Tutti' and 'Solo' are used to indicate changes in volume and performance style. There are also numerical markings '2' above certain notes, likely indicating fingerings or breath marks. The music is written in a standard staff with a treble clef and a key signature of one sharp.

Musical score for Flauto traversiere I, measures 121-173. The score is written in treble clef with a key signature of two sharps (F# and C#). The music features various dynamics and articulations, including *Tutti* and *Solo* markings. The score is divided into systems of five staves each, with measure numbers 121, 126, 130, 134, 138, 142, 146, 151, 156, 160, 165, 169, and 173 indicated at the beginning of each system. The notation includes eighth and sixteenth notes, rests, and dynamic markings such as *f* (forte) and *+* (accents).