

Basso

Concerto Con *Wae* Trombe, Da Caccia

Del Sig:


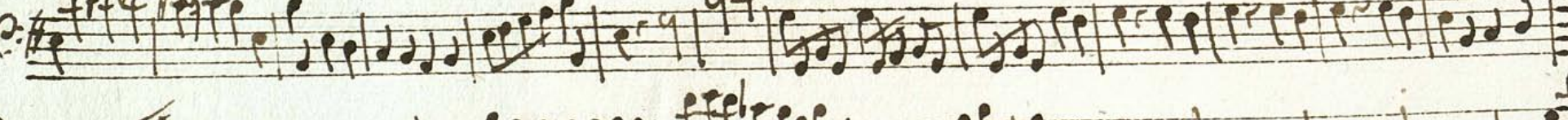
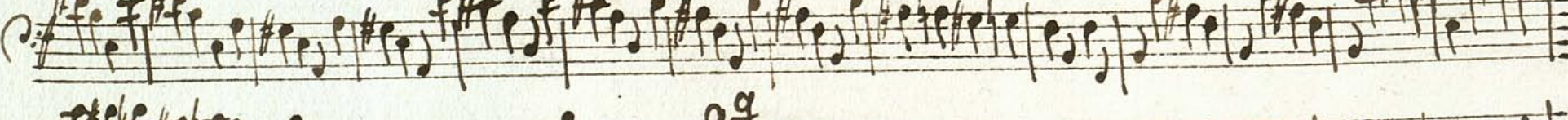
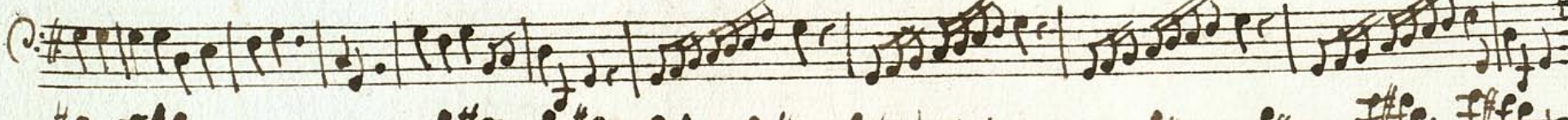
Giuseppe Valentini,



Largo  $\text{C}\sharp$   $\frac{3}{4}$



Allegro  $\text{C}\sharp$   $\frac{2}{4}$



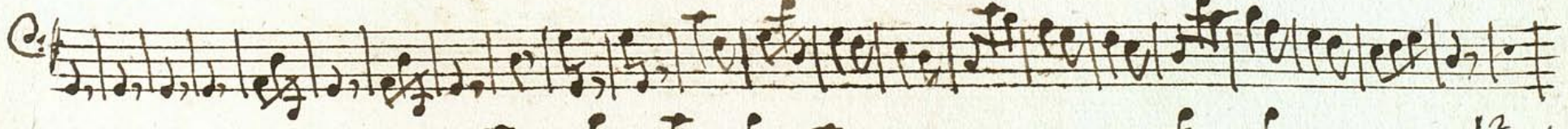
Comodo: 

 17

Spiritoso: 

 35

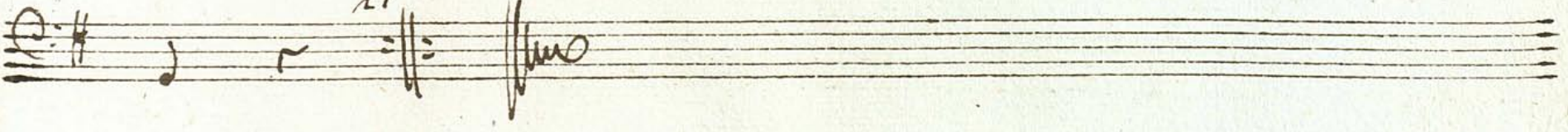




 12

Allegro: 



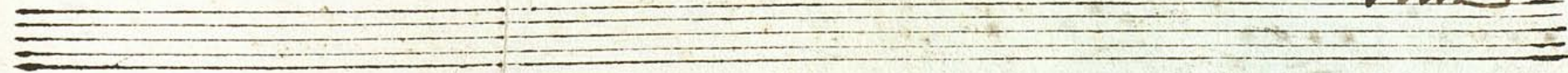
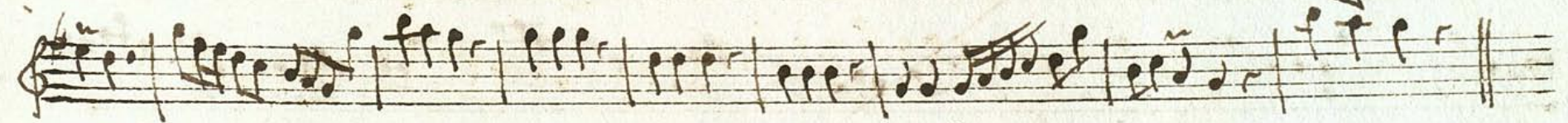
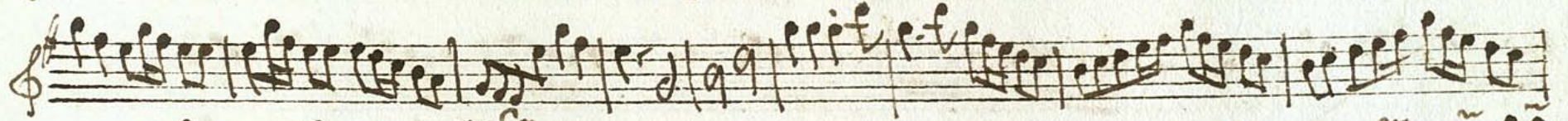
 21



Violino Primo



Largo  $\#$   $\frac{3}{4}$



*Volvi*

*Spiritoso*

Allegro



Violino 2:



Largo

$\frac{3}{4}$

Handwritten musical score for the first system, marked "Largo" and in 3/4 time. It consists of five staves of music in G major, featuring various rhythmic patterns and articulations.

Allegro

$\frac{C}{4}$

Handwritten musical score for the second system, marked "Allegro" and in common time. It consists of five staves of music in G major, featuring more rhythmic complexity and dynamic markings.

A handwritten musical score consisting of ten staves. The notation is in a single system, likely for a single melodic line. The key signature is one sharp (F#), and the time signature is 9/8. The score begins with a treble clef and a sharp sign. The first staff contains a series of quarter and eighth notes. The second staff features a dense, rapid passage of sixteenth notes. The third and fourth staves continue with similar rhythmic patterns, including some triplet-like groupings. The fifth staff shows a more melodic line with some rests. The sixth staff has a '9' written above it, possibly indicating a measure or a specific rhythmic value. The seventh staff continues the melodic development. The eighth staff begins with the word 'Comodo' written above the staff, indicating a change in tempo or mood. The ninth and tenth staves conclude the piece with a final cadence and the word 'Vlti' written at the end of the final staff.

*Spiritoso*

Handwritten musical score for a piece titled "Spiritoso". The score consists of ten staves of music. The first staff begins with a treble clef, a key signature of one sharp (F#), and a 3/8 time signature. The music is written in a cursive hand and features a variety of rhythmic patterns, including eighth and sixteenth notes, often beamed together. The piece concludes with a double bar line and repeat dots. The second staff starts with the tempo marking "Allegro" and a 2/4 time signature. The notation continues with similar rhythmic complexity. The final staff ends with a double bar line and repeat dots. A circular library stamp is visible in the bottom right corner of the page.



.136.  
Corno Primo

*Largo*  $\text{3/4}$   $\text{2}$   $\text{2}$   $\text{12}$

*Allegro*  $\text{C}$

*f* *mf*

*Volta*

*And.<sup>te</sup>*

Handwritten musical notation on a single staff. It begins with a treble clef, a key signature of one sharp (F#), and a common time signature (C). A measure rest for 6 measures is indicated above the staff. The notation includes eighth and sixteenth notes, rests, and a repeat sign.

Handwritten musical notation on a single staff. It begins with a treble clef, a key signature of one sharp (F#), and a 3/8 time signature. A measure rest for 2 measures is indicated above the staff. The notation includes quarter notes, eighth notes, and sixteenth notes.

Handwritten musical notation on a single staff. It begins with a treble clef, a key signature of one sharp (F#), and a common time signature (C). A measure rest for 7 measures is indicated above the staff. The notation includes quarter notes, eighth notes, and sixteenth notes, ending with a double bar line and repeat sign.

Handwritten musical notation on a single staff. It begins with a treble clef, a key signature of one sharp (F#), and a common time signature (C). A measure rest for 15 measures is indicated above the staff. The notation includes quarter notes, eighth notes, and sixteenth notes.

Handwritten musical notation on a single staff. It continues the piece with quarter notes, eighth notes, and sixteenth notes.

Handwritten musical notation on a single staff. It begins with a treble clef, a key signature of one sharp (F#), and a common time signature (C). A measure rest for 8 measures is indicated above the staff. The notation includes quarter notes, eighth notes, and sixteenth notes.

Handwritten musical notation on a single staff. It begins with a treble clef, a key signature of one sharp (F#), and a common time signature (C). A measure rest for 2 measures is indicated above the staff. The notation includes quarter notes, eighth notes, and sixteenth notes, ending with a double bar line and repeat sign.

Handwritten musical notation on a single staff. It begins with a treble clef, a key signature of one sharp (F#), and a 2/4 time signature. A measure rest for 2 measures is indicated above the staff. The notation includes quarter notes and eighth notes, ending with a double bar line and repeat sign.

Handwritten musical notation on a single staff. It begins with a treble clef, a key signature of one sharp (F#), and a 2/4 time signature. A measure rest for 2 measures is indicated above the staff. The notation includes quarter notes and eighth notes, ending with a double bar line and repeat sign.



-136.  
Corno 2: in G

*Largo*  $\frac{3}{4}$

*Allegro*

*Volte*

Detailed description: This is a handwritten musical score for the second horn part in G major. The score is written on ten staves. The first staff begins with the tempo marking 'Largo' and a 3/4 time signature. The music is written in treble clef with a key signature of one sharp (F#). The notation includes various rhythmic values, including eighth and sixteenth notes, and rests. There are several annotations above the notes, including the number '2' and '12'. The second staff continues the melody. The third staff is marked 'Allegro' and has a common time signature (C). The fourth and fifth staves contain more complex rhythmic patterns, including sixteenth-note runs. The sixth staff has a '5' written above it. The seventh and eighth staves continue the melodic line with some triplet markings (indicated by a '3'). The ninth staff has a '5' written above it. The tenth staff concludes the piece with a double bar line and the word 'Volte' written in a decorative script.

*And<sup>te</sup>*

