

MUS
V:41

Sonate à 3 Mains. in G

Composée par C. W. Wolf.

Allegro moderato

Handwritten musical notation for the first system, consisting of three staves. The top staff is in treble clef with a key signature of one sharp (F#) and a 3/4 time signature. The middle and bottom staves are in bass clef. The music features various note values, rests, and dynamic markings such as 'f' and 'ff'.

Handwritten musical notation for the second system, consisting of three staves. The notation is dense with many notes, including some with stems pointing downwards. It includes dynamic markings like 'tr' and 'for.'

Handwritten musical score for the first system, consisting of three staves. The top staff is in treble clef with a key signature of one sharp (F#) and a time signature of 3/4. It begins with a dynamic marking of *fort.* and contains several measures of music with long, sweeping melodic lines and many slurs. The middle staff is in bass clef and contains accompaniment with various rhythmic patterns. The bottom staff is in bass clef and contains a bass line with chords and single notes. Dynamic markings include *pp.* and *fort.* throughout the system.

Handwritten musical score for the second system, also consisting of three staves. The notation continues from the first system. The top staff has melodic lines with slurs and dynamic markings like *p.* and *fort.*. The middle and bottom staves provide harmonic support. The system concludes with a double bar line and the handwritten instruction *Lieque la 2de parte* written across the staves.

MUS V: 41





Handwritten musical notation on three staves. The top staff features a treble clef and a key signature of one sharp (F#). It contains a complex melodic line with many sixteenth and thirty-second notes, including a large group of sixteenth notes at the beginning. The middle staff has a bass clef and contains a more rhythmic accompaniment with eighth and sixteenth notes. The bottom staff has a bass clef and contains a bass line with eighth and sixteenth notes. There are various dynamic markings such as *sfz* and *p* scattered throughout the notation.

Handwritten musical notation on three staves. The top staff has a treble clef and contains a melodic line with many sixteenth notes. The middle staff has a bass clef and contains a bass line with eighth and sixteenth notes. The bottom staff has a bass clef and contains a bass line with eighth and sixteenth notes. The notation is dense and includes various rhythmic values and dynamic markings.

Volte presto.

Handwritten musical notation on three staves. The notation includes various note values, rests, and dynamic markings such as *mf* and *ff*. The music is written in a style characteristic of 18th or 19th-century manuscripts.

Handwritten musical notation on three staves. The notation includes various note values, rests, and dynamic markings such as *for:* and *ff*. The music is written in a style characteristic of 18th or 19th-century manuscripts.

Handwritten musical score for the first system, consisting of three staves. The top staff is in treble clef with a key signature of one sharp (F#) and contains melodic lines with dynamic markings *for:*, *pp.*, and *for*. The middle staff is in treble clef with a key signature of one sharp (F#) and contains a melodic line. The bottom staff is in bass clef and contains a bass line with chords. The system concludes with a double bar line.

Handwritten musical score for the second system, consisting of three staves. The top staff is in treble clef with a key signature of one sharp (F#) and contains melodic lines with dynamic markings *for:* and *pp.*. The middle staff is in treble clef with a key signature of one sharp (F#) and contains a melodic line. The bottom staff is in bass clef and contains a bass line with chords. The system concludes with a double bar line.

Adagio

The first system of the handwritten musical score consists of three staves. The top staff is written in treble clef with a key signature of one flat (B-flat) and a 2/4 time signature. It contains dense, rapid sixteenth-note passages with many beamed notes and slurs. The middle staff is in alto clef with a 2/4 time signature, featuring a more melodic line with some slurs. The bottom staff is in bass clef with a 2/4 time signature, providing a harmonic accompaniment with chords and moving lines. Dynamic markings include *ff* (fortissimo) at the beginning and *for:* (forzando) towards the end of the system.

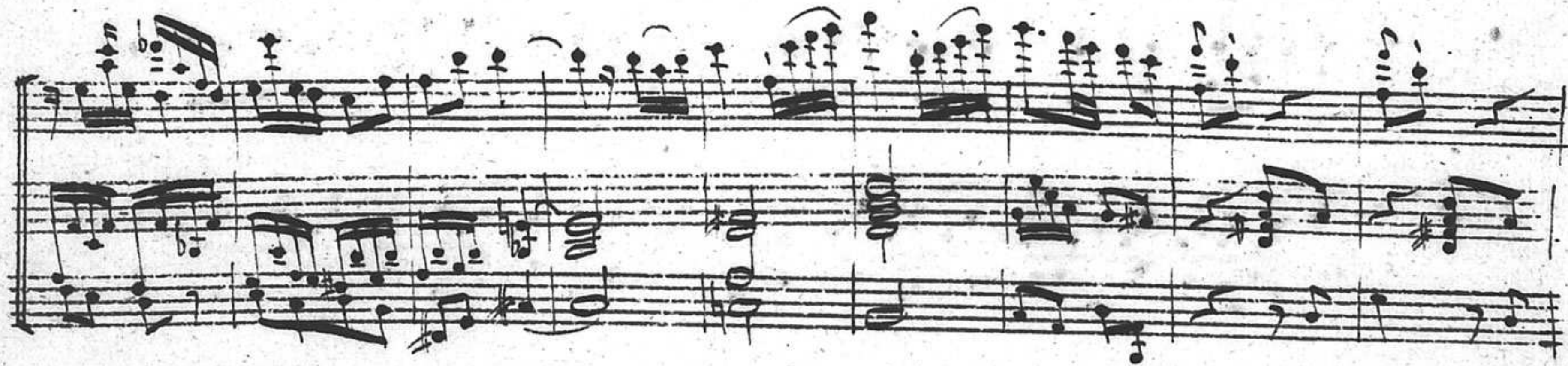
The second system of the handwritten musical score also consists of three staves. The top staff continues the rapid sixteenth-note passages from the first system. The middle and bottom staves continue their respective melodic and harmonic parts. Dynamic markings include *p:* (piano) at the start of the system and *for:* (forzando) in the middle. The notation remains dense and intricate throughout the system.

Handwritten musical notation on two systems of staves. The first system consists of three staves. The top staff begins with a treble clef and a key signature of one flat (B-flat). It contains a melodic line with various note values, including eighth and sixteenth notes, and rests. The middle and bottom staves provide harmonic accompaniment with chords and moving lines. The second system also consists of three staves, continuing the musical piece with similar notation and structure.

Handwritten musical notation on two systems of staves. The first system consists of three staves. The top staff begins with a treble clef and a key signature of one flat (B-flat). It contains a melodic line with various note values, including eighth and sixteenth notes, and rests. The middle and bottom staves provide harmonic accompaniment with chords and moving lines. The second system also consists of three staves, continuing the musical piece with similar notation and structure. The instruction *volti presto* is written in cursive on the right side of the second system.



Handwritten musical notation system 1, consisting of three staves. The top staff is in treble clef with a key signature of one flat (B-flat) and contains dense, rapid sixteenth-note passages with many beamed notes. The middle staff is in alto clef with a key signature of one flat and contains a melodic line with eighth and sixteenth notes. The bottom staff is in bass clef with a key signature of one flat and contains a bass line with quarter and eighth notes. The system concludes with a double bar line and a fermata over the final notes.



Handwritten musical notation system 2, consisting of three staves. The top staff is in treble clef with a key signature of one flat and contains dense, rapid sixteenth-note passages with many beamed notes. The middle staff is in alto clef with a key signature of one flat and contains a melodic line with eighth and sixteenth notes. The bottom staff is in bass clef with a key signature of one flat and contains a bass line with quarter and eighth notes. The system concludes with a double bar line and a fermata over the final notes.

Handwritten musical score for three staves. The notation includes treble clefs, a key signature of one sharp (F#), and a 6/8 time signature. The music consists of several measures of chords and melodic lines, with some notes beamed together. The staves are connected by a brace on the left side.

Londo Grazioso.

Handwritten musical score for three staves, titled "Londo Grazioso." The notation includes treble clefs, a key signature of one sharp (F#), and a 9/8 time signature. The music features a complex texture with many beamed notes and rests. The staves are connected by a brace on the left side. The piece concludes with a double bar line and the number "115" written at the end of the first staff.

Handwritten musical notation on three staves. The top staff features a complex melodic line with many beamed notes and some accidentals. The middle staff contains a more rhythmic accompaniment with some rests. The bottom staff shows a steady bass line. The notation is dense and characteristic of 18th-century manuscript.

Handwritten musical notation on three staves, continuing the piece. The top staff continues with intricate melodic passages. The middle staff has a more active accompaniment with many beamed notes. The bottom staff provides a consistent bass line. The handwriting is consistent with the first system.

Handwritten musical notation on two systems of staves. The first system consists of three staves. The top staff contains a melodic line with various notes and rests. The middle and bottom staves contain accompaniment, including chords and moving lines. The second system also consists of three staves, continuing the musical piece. The notation is dense and includes many accidentals and slurs.

Handwritten musical notation on two systems of staves. The first system consists of three staves. The top staff contains a melodic line with various notes and rests. The middle and bottom staves contain accompaniment, including chords and moving lines. The second system also consists of three staves, continuing the musical piece. The notation is dense and includes many accidentals and slurs. The text "volti Minore" is written in cursive at the end of the second system.

volti Minore

Minore

The first system of the handwritten musical score consists of three staves. The top staff begins with a treble clef and a key signature of one flat (B-flat). It contains several measures of music, including a measure with a 'pizz.' (pizzicato) marking and another with 'for p.' (for piano). The middle staff starts with a bass clef and contains a melodic line with various note values and rests. The bottom staff begins with a treble clef and contains a series of chords, some marked with 'f.' (forte). The notation is fluid and characteristic of 18th or 19th-century manuscript writing.

The second system of the handwritten musical score also consists of three staves. The top staff features a series of chords, each with a slur above it, suggesting a rapid sequence of chords. The middle and bottom staves contain more complex rhythmic patterns with many sixteenth and thirty-second notes, often beamed together. The notation is dense and shows a high level of technical skill in the original manuscript.

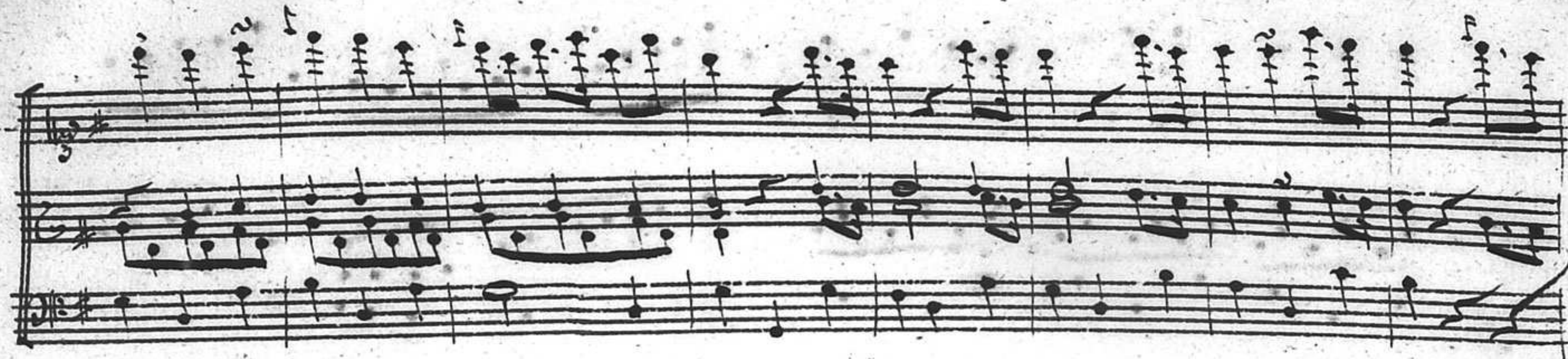
Handwritten musical score for three staves, first system. The notation includes treble clefs, a common time signature (C), and various rhythmic values such as eighth and sixteenth notes. The music features complex rhythmic patterns and some rests.

Handwritten musical score for three staves, second system. This system includes a large slur over the first staff, indicating a long phrase. The notation continues with treble clefs and common time, featuring a variety of note values and rests. There are some markings that appear to be *sfz* (sforzando) in the lower staves.

—

Handwritten musical score for three staves. The top staff uses a treble clef and a key signature of one flat (B-flat). It contains several measures of music, including chords and melodic lines. A handwritten word, possibly "solo", is written below the second measure. The middle and bottom staves also contain musical notation, including notes and rests.

Handwritten musical score for three staves. The top staff uses a treble clef and a key signature of one sharp (F-sharp). It begins with a dense cluster of notes. Below the first measure, the tempo marking *Sine Tempo* is written. The tempo changes to *a tempo* in the second measure, indicated by a curved line. The middle and bottom staves contain musical notation, including notes and rests.



Handwritten musical notation on a grand staff. The top staff uses a treble clef and the bottom staff uses a bass clef. The music consists of several measures of notes, some with stems and some with flags. There are some markings above the notes, possibly indicating fingerings or ornaments.

Handwritten musical notation on a grand staff. The top staff uses a treble clef and the bottom staff uses a bass clef. This system includes trills, indicated by the letters "tr" above notes in both staves. The notation features various note values and stems, with some notes beamed together.

Handwritten musical score on three staves. The top staff is in treble clef with a key signature of one sharp (F#) and a dynamic marking of *pp*. The middle staff is in alto clef with a dynamic marking of *pp*. The bottom staff is in bass clef with a dynamic marking of *pp*. The music consists of several measures of notes and rests, ending with a double bar line and repeat dots. The paper is aged and shows some staining.

Four sets of empty musical staves, each consisting of five lines, arranged vertically. These staves are completely blank and contain no musical notation.