

SONATA in c

for String Ensemble

K.158

Violin I

Domenico Scarlatti (1685 - 1757)

Arr. Michel Rondeau

Andante ♩ = 55

10

19

27

37

49

61

71

79

91

SONATA in c

for String Ensemble

K.158

Violin II

Domenico Scarlatti (1685 - 1757)

Arr. Michel Rondeau

Andante ♩ = 55

9

16

26

37

48

58

70

80

91

SONATA in c

for String Ensemble

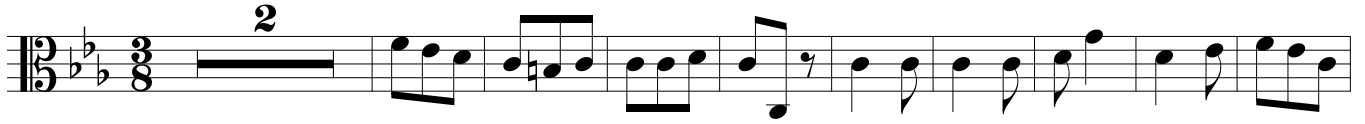
K.158

Domenico Scarlatti (1685 - 1757)

Arr. Michel Rondeau

Viola

Andante $\text{♩} = 55$



12



24



36



48



61



71



83



95



SONATA in c

for String Ensemble

K.158

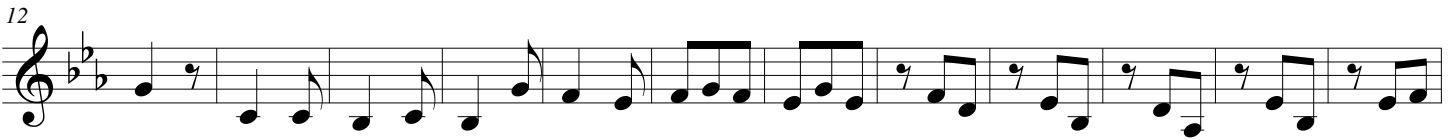
Violin III (Viola)

Domenico Scarlatti (1685 - 1757)

Arr. Michel Rondeau

Andante $\text{♩} = 55$

2



SONATA in c

for String Ensemble

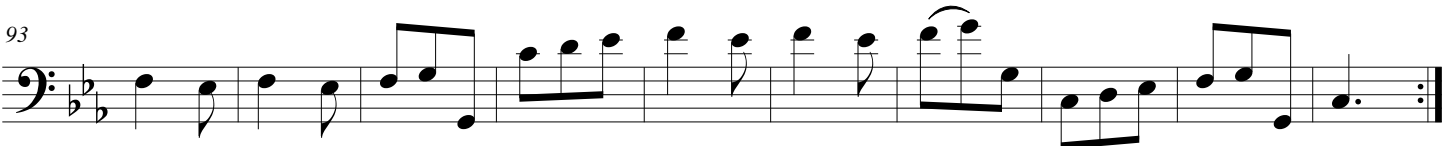
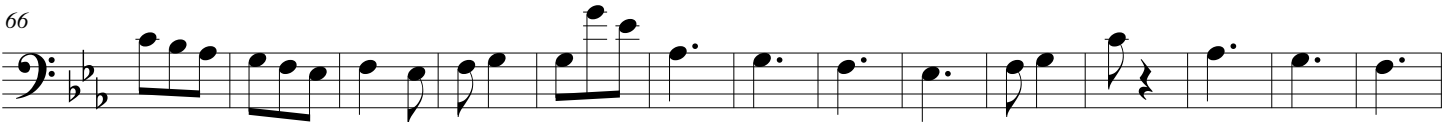
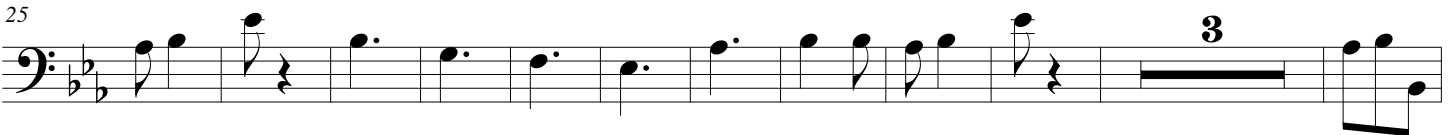
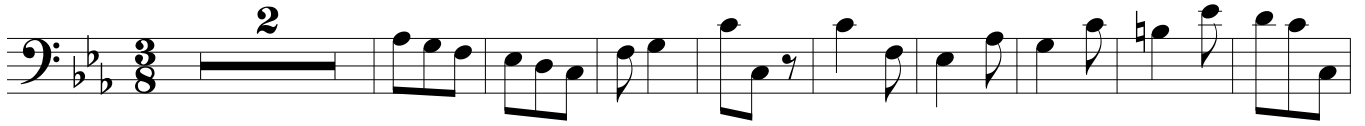
K.158

Domenico Scarlatti (1685 - 1757)

Arr. Michel Rondeau

Cello

Andante $\text{♩} = 55$



SONATA in c

for String Ensemble

K.158

Domenico Scarlatti (1685 - 1757)

Arr. Michel Rondeau

Double Bass

Andante $\text{♩} = 55$

