

Cantemus Domino

Alto

1º Tracto

Manoel Dias de Oliveira
(1734 - 1813)

Allegro ♩ = 110

15



f Can - te - mus Do - mi - no Can - te - mus Do - mi -



no Can - te - mus Do - - - mi - no. *p* glo - ri -

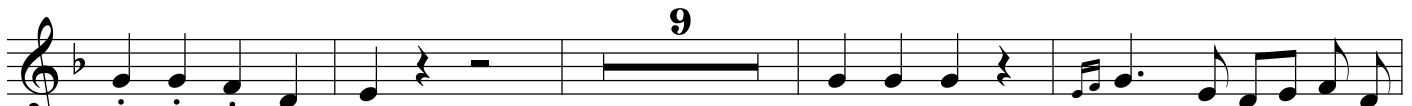


- o - se e - nim glo - ri - o - se e - nim ho - no -



- ri - fi - ca - tus est ho - no - ri - fi - ca - - - - - tus est ho - no -

f



ri - fi - ca - tus est *f* Hic De - us me - us et ho - no -



- ri - fi - ca - bo ho - no ri - fi - ca - bo e - - - um



f e - um e - um et ho - no - ri - fi - ca - bo e - - - um



Deus Pa - tris me - i Deus Pa - tris me - i et ex - al -

Matinas do Sábado Santo
Cantemus Domino

ta - - - - - bo__ e - um *f* Do - mi-nus

The first line of music is in G minor (one flat) and 4/4 time. It begins with a treble clef and a key signature of one flat. The melody starts with a quarter note G4, followed by a dotted quarter note A4, a half note Bb4, and a whole note C5. This is followed by a quarter note Bb4, a quarter note A4, a quarter note G4, and a quarter note F4. The phrase ends with a quarter rest and a whole rest. A fermata with the number '9' above it covers the final two measures. The lyrics 'ta - - - - - bo__ e - um' are aligned under the first six notes, and '*f* Do - mi-nus' is aligned under the final notes.

no - men est no - men est no - men est est__ il - li

The second line of music continues in G minor and 4/4 time. It starts with a quarter note G4, a dotted quarter note A4, a half note Bb4, and a whole note C5. This is followed by a quarter note Bb4, a quarter note A4, a quarter note G4, and a quarter note F4. The phrase ends with a quarter rest and a whole rest. A fermata with the number '2' above it covers the final two measures. The lyrics 'no - men est no - men est no - men est est__ il - li' are aligned under the notes.

Do-mi-nus Do - mi-nus no-men est il - li.

The third line of music continues in G minor and 4/4 time. It starts with a quarter rest, followed by a quarter note G4, a dotted quarter note A4, a half note Bb4, and a whole note C5. This is followed by a quarter note Bb4, a quarter note A4, a quarter note G4, and a quarter note F4. The phrase ends with a quarter rest and a whole rest. A fermata with the number '2' above it covers the first two measures. The lyrics 'Do-mi-nus Do - mi-nus no-men est il - li.' are aligned under the notes.