

Op. I, 62

19.

~~Tris~~

pour Deux flutes et Basse
Comp: par J. Simon

Basse

n° 1.

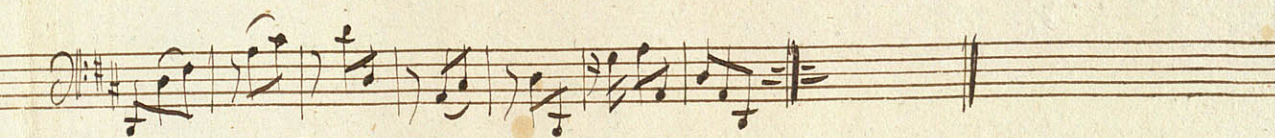
CASSO

allegro || *Al: #* *C*

Handwritten musical score for the first section, marked *allegro*. The score is written on ten staves in treble clef, with a key signature of one sharp (F#) and a common time signature (C). The notation includes various rhythmic values such as eighth and sixteenth notes, as well as rests and dynamic markings like *f*.

andante || *Al: #* *2/4*

Handwritten musical score for the second section, marked *andante*. The score is written on two staves in treble clef, with a key signature of one sharp (F#) and a 2/4 time signature. The notation features a more melodic and slower-paced style with dotted rhythms and longer note values.





Trio

Pour Deux Flutes et Basse

Comp. par D. Simoni

Flauto primo

No I.

Trio Pour deux flutes et basse flauto Primo
Composé par D. Simoni.

allegro.

The image shows a page of handwritten musical notation for a Trio in G major for two flutes and bass flute. The score is written on ten staves. The first staff begins with a treble clef, a key signature of one sharp (F#), and a common time signature (C). The tempo is marked 'allegro.' The music is characterized by intricate, rapid passages, including many sixteenth and thirty-second notes, often beamed together. There are numerous slurs and accents throughout the piece. The notation includes various ornaments and trills. The piece concludes with a double bar line and repeat dots. The number '53' is written below the final staff.

Andante

Handwritten musical score for a piece titled "Andante". The score consists of seven staves of music. The first six staves contain dense, intricate passages with many triplets and slurs. The seventh staff begins with a few notes and a double bar line, followed by a large, decorative flourish that spans across the staff. The music is written in a cursive, handwritten style on aged paper.

Volti

allegro

Handwritten musical score for a piece in G major, 3/4 time, marked *allegro*. The score consists of 12 staves of music. The first staff begins with a treble clef, a key signature of one sharp (F#), and a 3/4 time signature. The music is characterized by rapid sixteenth-note passages, often grouped in threes and fives. The notation includes various ornaments such as slurs, ties, and accents. The piece concludes with a double bar line and a repeat sign. There are several handwritten initials and markings throughout the score, including "L." at the beginning of the first staff, "L." at the end of the second staff, "L." at the end of the eighth staff, and "L." at the end of the twelfth staff. A small "p." is written below the second staff. A circular library stamp is visible at the bottom center of the page.



Flauto 2 ^{do}

allegro

A handwritten musical score for Flauto 2, starting with the tempo marking 'allegro'. The score is written on ten staves of five-line music paper. The key signature is one sharp (F#) and the time signature is common time (C). The music is written in a cursive hand and includes various musical notations such as notes, rests, slurs, and dynamic markings. The score concludes with a double bar line on the tenth staff.

Fatti

Andante

A handwritten musical score on aged paper, featuring six staves of music. The tempo is marked "Andante". The music is written in a treble clef with a key signature of two sharps (F# and C#). The notation includes various rhythmic values, such as eighth and sixteenth notes, and rests. There are several measures with triplets, indicated by a "3" above the notes. The score concludes with a double bar line and repeat dots. The paper shows signs of age, including some staining and foxing.

allegro

Handwritten musical score for a single melodic line in treble clef, 3/8 time, key of D major. The score consists of 10 staves of music, ending with a double bar line. The notation includes various rhythmic values, slurs, and articulation marks.

The first staff begins with a treble clef, a key signature of one sharp (F#), and a 3/8 time signature. The music is characterized by rapid sixteenth-note passages, often grouped in threes or fours. Slurs are used to indicate phrasing, and small 't' marks above notes indicate staccato articulation. The piece concludes with a double bar line on the tenth staff.

