

Contrabass

Salve, Regina

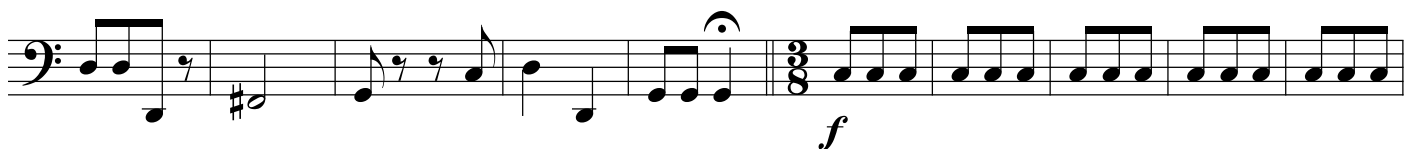
José Joaquim Emerico Lobo de Mesquita
(1746 - 1805)

Parte de Contínuo por Rafael Sales Arantes

Lento ♩ = 40



Allegro molto ♩ = 150



Salve, Regina

First musical staff in bass clef. It begins with a series of eighth notes, followed by a quarter note, and then a series of eighth notes. A dynamic marking of *p* is placed below the staff.

Second musical staff in bass clef. It starts with a dynamic marking of *f*, followed by a series of eighth notes, a quarter note, and another series of eighth notes. A dynamic marking of *p* is placed below the staff, and another *f* is placed at the end.

Third musical staff in bass clef. It features a series of eighth notes, a quarter note, and a series of eighth notes. A dynamic marking of *p* is placed at the end of the staff.

Larghetto ♩ = 30

Fourth musical staff in bass clef. It begins with a dynamic marking of *f*, followed by a series of eighth notes, a quarter note, and a series of eighth notes. A dynamic marking of *p* is placed at the end of the staff.

Fifth musical staff in bass clef. It starts with a series of eighth notes, followed by a series of eighth notes, a quarter note, and a series of eighth notes. A dynamic marking of *f* is placed below the staff, and another *p* is placed at the end.

Sixth musical staff in bass clef. It begins with a series of eighth notes, followed by a series of eighth notes, a quarter note, and a series of eighth notes. A dynamic marking of *f* is placed below the staff, and another *p* is placed at the end.