

T E N O R

OPERA NOVA DE BALLI

*Di Francesco Bendusi A quatro Accommodati da cantare & sonare
d'ogni sorte de Stromenti Nouamente dati in luce.*

A QVATRO



VOCI

*In Venetia Appresso di
Antonio Gardane.*

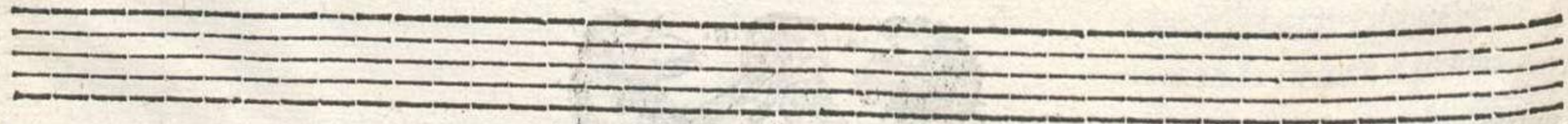
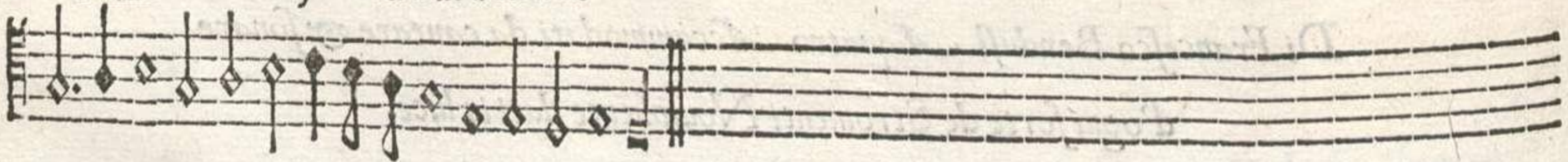
1553

Bayer. Staats-
Bibliothek
München

461



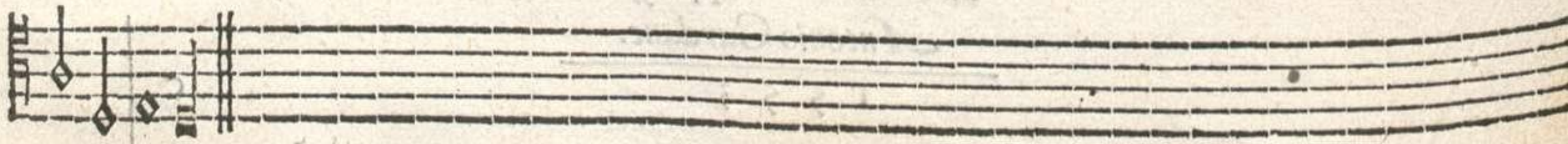
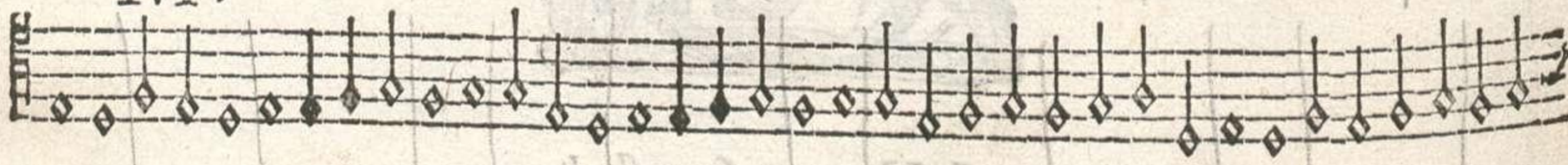
Aff' e mezzo ditto il Romano



462



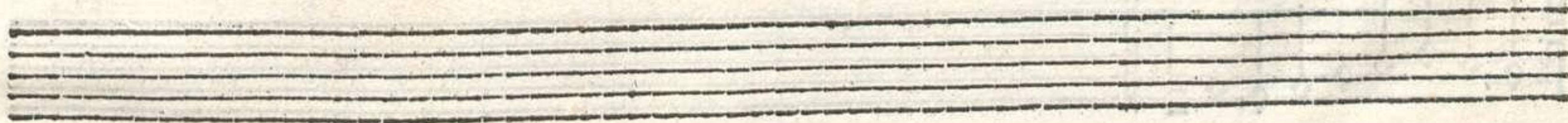
Moschetta



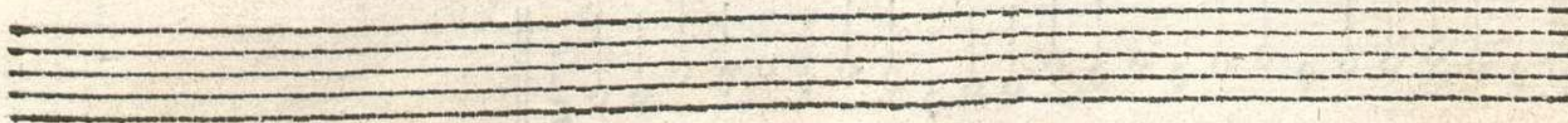
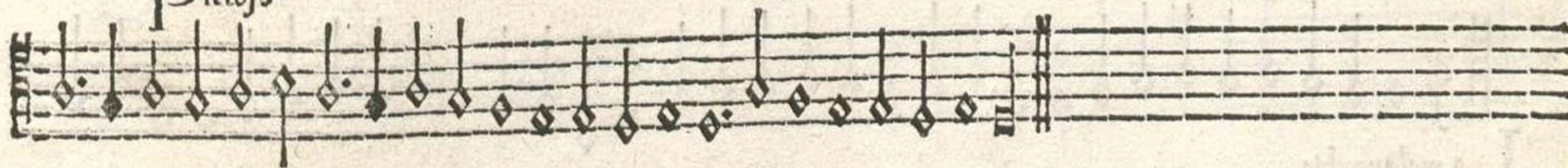
24



Esiderata



Pietoso

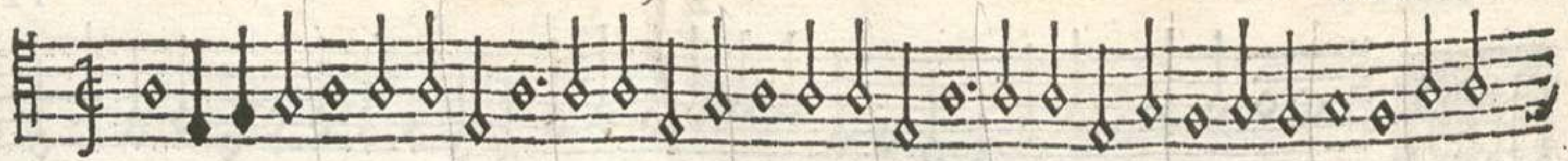


SONIT

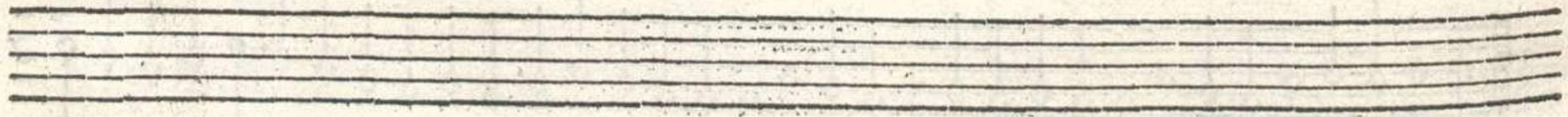
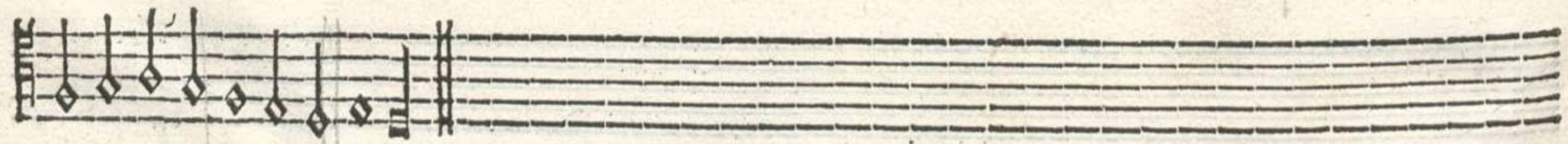
3

TENOR

465



Peranza



466



L A mala uecchia



ROMA

TENOR

4



Handwritten musical notation on a five-line staff. The notes are diamond-shaped and have stems pointing downwards. A red handwritten number '467' is written in the right margin.

L stocco

Handwritten musical notation on a five-line staff, continuing the diamond-shaped notes with downward stems.

Handwritten musical notation on a five-line staff, continuing the diamond-shaped notes with downward stems.

Handwritten musical notation on a five-line staff, continuing the diamond-shaped notes with downward stems. A red handwritten number '468' is written in the right margin.

Doi stanchi

Handwritten musical notation on a five-line staff, continuing the diamond-shaped notes with downward stems.

Handwritten musical notation on a five-line staff, continuing the diamond-shaped notes with downward stems.

469



TENOR

S

A falilela

470

L *A Bruna*

471

E *Done uastu o bon solda*

TENOR

TENOR



472

Hi non ha martello

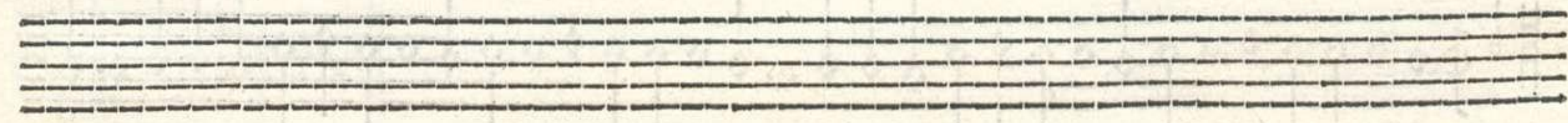
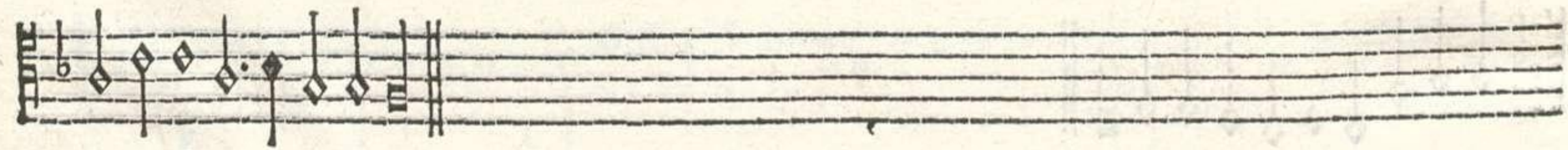
473

Incognita

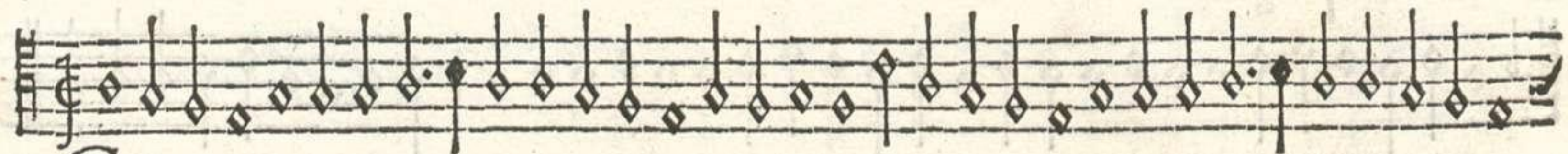
474



Ella foresta



475



Galante



ROMA

TENOR



476

vsta

477

A Nimoso

478

C ortesa Padoana

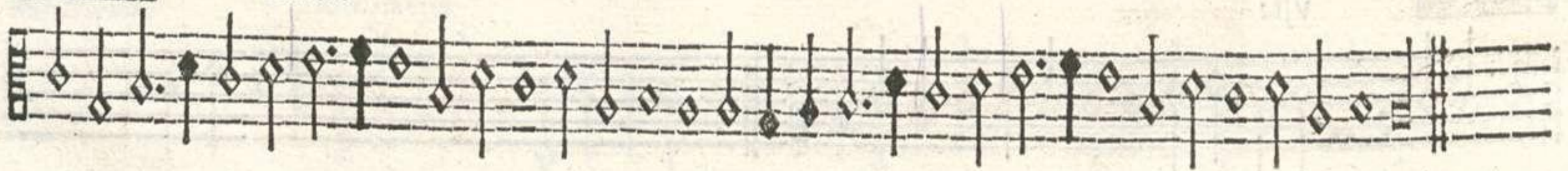
Balli di Francesco Bendusi a 4 D

479

B



Andera



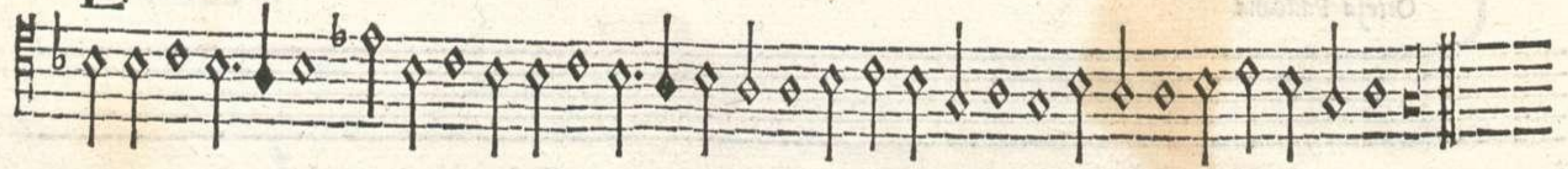
480

G *Ioia*



481

L *A Giouenetta*



284

TENOR

10

TENOR



Musical staff with notes and stems, starting with a treble clef and a common time signature.

482

L ben ti uegna

Musical staff with notes and stems, continuing the melody.

Musical staff with notes and stems, ending with a double bar line.

Empty musical staves.

Musical staff with notes and stems, starting with a treble clef and a common time signature.

483

P ass' e mezo ditto il compasso

Musical staff with notes and stems, ending with a double bar line.

Dij



TENOR

||

iolla

TAVOLA delli balli Numero 24

<i>Animoso</i>	8	<i>Fusta</i>	8	<i>La bruna</i>	5
<i>Bella foresta</i>	7	<i>Galante</i>	7	<i>La giouenetta</i>	9
<i>Bandera</i>	9	<i>Gioia</i>	9	<i>Moschetta</i>	1
<i>Chi non ha martello</i>	6	<i>Il stocco</i>	4	<i>Pass'e mezo ditto</i>	
<i>Cortesa padoana</i>	8	<i>Incognita</i>	6	<i>il Romano</i>	1
<i>Desiderata</i>	2	<i>Il ben ti uegna</i>	10	<i>Pietoso</i>	2
<i>Doi stanchi</i>	4	<i>La mala uecchia</i>	3	<i>Pass'e mezo ditto</i>	
<i>E doue uastu o bon solda</i>	5	<i>La falisela</i>	5	<i>il Compasso</i>	10
				<i>Speranza</i>	3
				<i>Violla</i>	11

A.W.