

THE

Essex Harmony
containing a Collection
of
Psalm Tunes

composed in three & four Parts
suited to the several Measures
of either Version set in Score
by

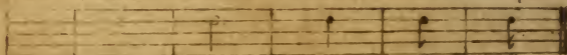
DANIEL BAYLEY

Philo Musico

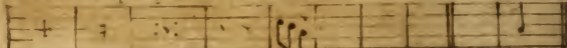
Printed & sold by the Author in
Newbury Port & by
most Booksellers in
BOSTON

17 72

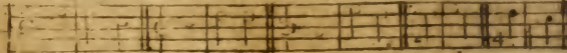
A Soutary Minim Crochet Quaver Semiquaver



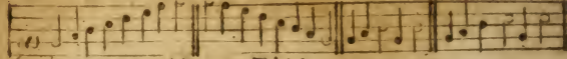
All the symbols are Dotted Slur Simile for Dotted for Slur



The several Modes of Time



Lesson for Tuning the Voice



The Table

All Saints	15	Hile White	13	St Anns	10
Barby	5	Kidderminster	12	St James	15
Bicester	10	Little Malbro	7	St Martins	12
Brighthelm	14	London new	11	St Martins new	3
Buckford	17	Lutterworth	13	St Michaels	12
Burton new	8	Landet	6	St Hellens	7
Canterbury	10	Manitield	15	St John	12
Cambridge	9	Marion hymn	4	Stowdown	8
Chelchester-new	9	Meat	15	Sunday	14
Dilton	12	New York	8	Sutton	7
Dunlurch	4	Newbury Port	7	St Patrick	5
Egham	10	Norwich	2	St Edmunds	13
Ely	10	Orange	7	Trinity	4
Farnham	8	Pf. 100	13	Warwick	17
Exeter Hymn	11	100 new	17	Wantage	14
Exeter	11	Plymouth	9	Wells	5
Farnham	3	Portsmouth	5	Windtor	16
Fareham	11	Putney	1	Walslop	4
Fetterlane	14	Quercy	17	Worminster	15
Funeral Tho	18	Rickmansworth	1	York	11
Guilford	7				
Hezham	9				

Putnam

Handwritten musical score for 'Putnam'. It consists of two systems of two staves each. The notation includes various note values, rests, and bar lines. The first system has a treble clef on the top staff and a bass clef on the bottom staff. The second system also has a treble clef on the top staff and a bass clef on the bottom staff.

Morning Minn

Handwritten musical score for 'Morning Minn'. It consists of two systems of two staves each. The notation includes various note values, rests, and bar lines. The first system has a treble clef on the top staff and a bass clef on the bottom staff. The second system also has a treble clef on the top staff and a bass clef on the bottom staff.

Richmanworth

Handwritten musical score for 'Richmanworth'. It consists of two systems of two staves each. The notation includes various note values, rests, and bar lines. The first system has a treble clef on the top staff and a bass clef on the bottom staff. The second system also has a treble clef on the top staff and a bass clef on the bottom staff.

1st Mellens

Musical score for '1st Mellens' consisting of four staves. The first two staves are in treble clef with a 3/2 time signature. The last two staves are in bass clef with a 3/2 time signature. The music features a mix of eighth and sixteenth notes with some rests.

//

Norwich

Musical score for 'Norwich' consisting of four staves. The first two staves are in treble clef with a common time signature. The last two staves are in bass clef with a common time signature. The music features a mix of eighth and sixteenth notes with some rests.

//

Musical score for the second section consisting of four staves. The first two staves are in treble clef with a common time signature. The last two staves are in bass clef with a common time signature. The music features a mix of eighth and sixteenth notes with some rests.

Sutton

3

Handwritten musical score for 'Sutton'. It consists of four staves of music. The first staff is a treble clef with a key signature of one flat and a common time signature. The second and third staves are also treble clefs with a key signature of one flat and a common time signature. The fourth staff is a bass clef with a key signature of one flat and a common time signature. The music is written in a simple, clear hand with notes and stems.

St Martins New

Handwritten musical score for 'St Martins New'. It consists of four staves of music. The first staff is a treble clef with a key signature of one flat and a common time signature. The second and third staves are also treble clefs with a key signature of one flat and a common time signature. The fourth staff is a bass clef with a key signature of one flat and a common time signature. The music is written in a simple, clear hand with notes and stems.

Farnham

Handwritten musical score for 'Farnham'. It consists of four staves of music. The first staff is a treble clef with a key signature of one flat and a common time signature. The second and third staves are also treble clefs with a key signature of one flat and a common time signature. The fourth staff is a bass clef with a key signature of one flat and a common time signature. The music is written in a simple, clear hand with notes and stems.

1
Dunckurch

Handwritten musical score for 'Dunckurch'. It consists of four staves of music. The first staff is a vocal line with a treble clef and a common time signature. The second and third staves are for a keyboard instrument, with the second staff in treble clef and the third in bass clef. The fourth staff is a basso continuo line in bass clef. The music is written in a historical style with various note values and rests.

Trinity

Handwritten musical score for 'Trinity'. It consists of four staves of music. The first staff is a vocal line with a treble clef and a common time signature. The second and third staves are for a keyboard instrument, with the second staff in treble clef and the third in bass clef. The fourth staff is a basso continuo line in bass clef. The music is written in a historical style with various note values and rests.

Herbstzeit

Handwritten musical score for 'Herbstzeit'. It consists of four staves of music. The first staff is a vocal line with a treble clef and a common time signature. The second and third staves are for a keyboard instrument, with the second staff in treble clef and the third in bass clef. The fourth staff is a basso continuo line in bass clef. The music is written in a historical style with various note values and rests.

Barley

Handwritten musical score for 'Barley' consisting of four staves. The notation includes treble and bass clefs, a 4/4 time signature, and various musical symbols such as notes, rests, and bar lines. The notes are primarily eighth and sixteenth notes, with some quarter notes. The paper shows signs of age and wear.

S^t. Patrick's

Handwritten musical score for 'S^t. Patrick's' consisting of four staves. The notation includes treble and bass clefs, a 4/4 time signature, and various musical symbols such as notes, rests, and bar lines. The notes are primarily eighth and sixteenth notes, with some quarter notes. The paper shows signs of age and wear.

Portsmouth

Handwritten musical score for 'Portsmouth' consisting of four staves. The notation includes treble and bass clefs, a 4/4 time signature, and various musical symbols such as notes, rests, and bar lines. The notes are primarily eighth and sixteenth notes, with some quarter notes. The paper shows signs of age and wear.

Landaff

Handwritten musical score for 'Landaff'. It consists of four staves of music. The first staff is a treble clef with a key signature of one flat (B-flat) and a common time signature (C). The second and third staves are in alto clef (C-clef on the third line). The fourth staff is in bass clef. The music is written in a historical style with various note values and rests.

//

Handwritten musical score for 'Wells'. It consists of four staves of music. The first staff is a treble clef with a key signature of one flat (B-flat) and a common time signature (C). The second and third staves are in alto clef (C-clef on the third line). The fourth staff is in bass clef. The music is written in a historical style with various note values and rests.

Wells

Handwritten musical score for 'Wells'. It consists of four staves of music. The first staff is a treble clef with a key signature of one flat (B-flat) and a common time signature (C). The second and third staves are in alto clef (C-clef on the third line). The fourth staff is in bass clef. The music is written in a historical style with various note values and rests.

Newbury Port

Three staves of musical notation for the piece 'Newbury Port'. The notation includes treble and bass clefs, a key signature of one sharp (F#), and a 2/4 time signature. The music consists of eighth and sixteenth notes with various rests.

Orange

Three staves of musical notation for the piece 'Orange'. The notation includes treble and bass clefs, a key signature of one sharp (F#), and a 2/4 time signature. The music features a mix of eighth and sixteenth notes.

Gilford

Three staves of musical notation for the piece 'Gilford'. The notation includes treble and bass clefs, a key signature of one sharp (F#), and a 2/4 time signature. The music is characterized by eighth and sixteenth notes.

Little Malborough

Three staves of musical notation for the piece 'Little Malborough'. The notation includes treble and bass clefs, a key signature of one sharp (F#), and a 4/4 time signature. The music is primarily composed of eighth and sixteenth notes.

Bronxville

Epson

Stowdwater

Colchester New 9

Handwritten musical score for 'Colchester New'. It consists of three staves. The top staff is a treble clef with a 2/4 time signature. The middle and bottom staves are bass clefs. The music is written in a simple, early manuscript style with various note values and rests.

Hexham

Handwritten musical score for 'Hexham'. It consists of three staves. The top staff is a treble clef with a 2/4 time signature. The middle and bottom staves are bass clefs. The music is written in a simple, early manuscript style with various note values and rests.

Plymouth

Handwritten musical score for 'Plymouth'. It consists of three staves. The top staff is a treble clef with a 2/4 time signature. The middle and bottom staves are bass clefs. The music is written in a simple, early manuscript style with various note values and rests.

Cambridge

Handwritten musical score for 'Cambridge'. It consists of three staves. The top staff is a treble clef with a 2/4 time signature. The middle and bottom staves are bass clefs. The music is written in a simple, early manuscript style with various note values and rests.

Handwritten musical notation for the first piece, consisting of three staves with notes and rests.

Egham

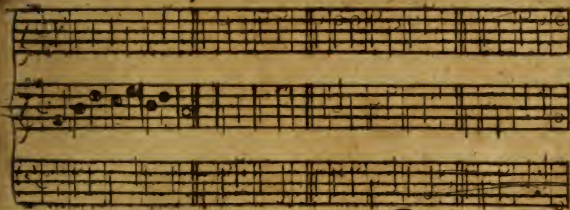
Handwritten musical notation for the second piece, consisting of three staves with notes and rests.

Ely

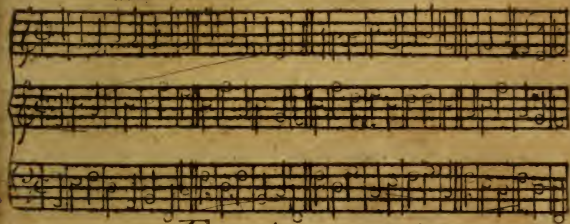
Handwritten musical notation for the third piece, consisting of three staves with notes and rests.

St. Anns

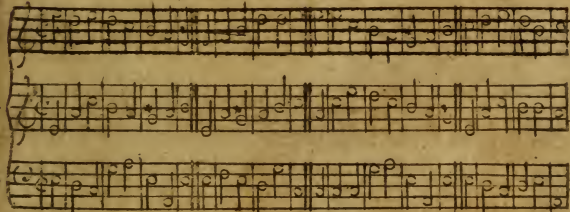
Handwritten musical notation for the fourth piece, consisting of three staves with notes and rests.



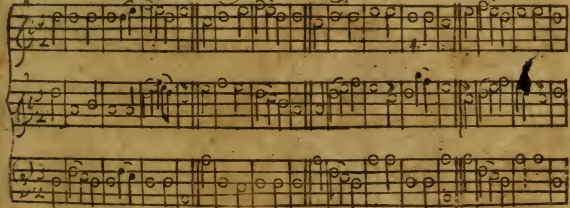
London New



Fareham



Quing Hymn



Dalton

Handwritten musical notation for the first system of 'Dalton'. It consists of three staves. The top staff is in treble clef, the middle in treble clef, and the bottom in bass clef. The music is written in a single system with repeat signs at the beginning and end.

Handwritten musical notation for the second system of 'Dalton'. It consists of three staves. The top staff is in treble clef, the middle in treble clef, and the bottom in bass clef. The music is written in a single system with repeat signs at the beginning and end.

1st Michaels

Handwritten musical notation for the first system of '1st Michaels'. It consists of three staves. The top staff is in treble clef, the middle in treble clef, and the bottom in bass clef. The music is written in a single system with repeat signs at the beginning and end.

Handwritten musical notation for the second system of '1st Michaels'. It consists of three staves. The top staff is in treble clef, the middle in treble clef, and the bottom in bass clef. The music is written in a single system with repeat signs at the beginning and end.

Handwritten musical notation for the first system, consisting of three staves with notes and rests.

S. Edmunds

Handwritten musical notation for the second system, consisting of three staves with notes and rests.

Hear

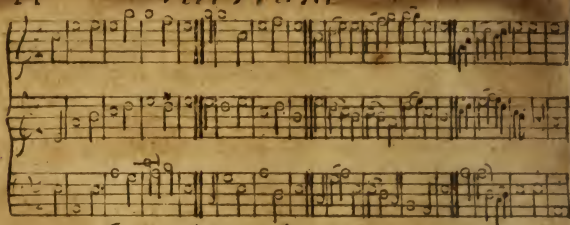
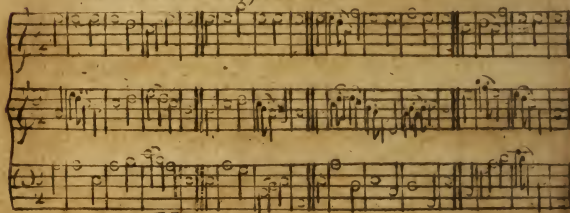
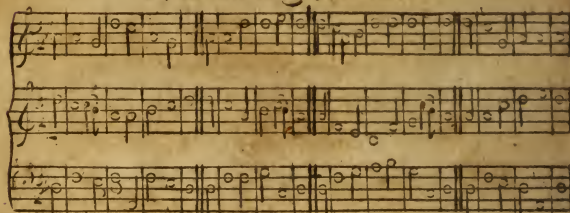
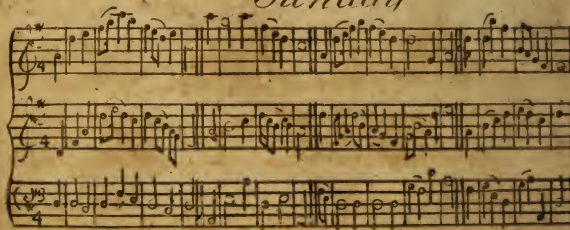
Handwritten musical notation for the third system, consisting of three staves with notes and rests.

Lutterworth

Handwritten musical notation for the fourth system, consisting of three staves with notes and rests.

Isle of White

Handwritten musical notation for the fifth system, consisting of three staves with notes and rests.

Letter Lane*Buckingham**Wantage**Sunday*

Worminder

Handwritten musical notation for the piece 'Worminder'. It consists of three staves: a treble clef staff, a second treble clef staff, and a bass clef staff. The music is written in a historical style with various note values and rests.

All Saints

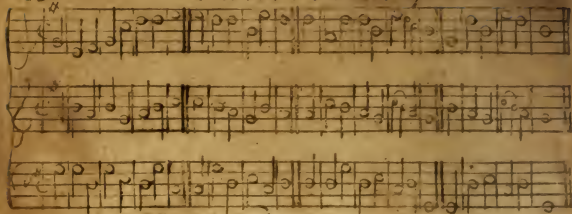
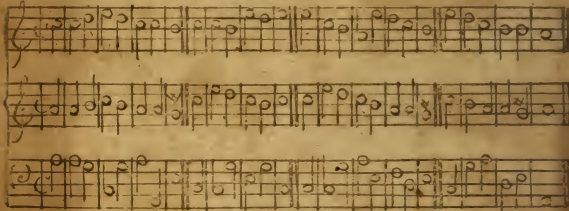
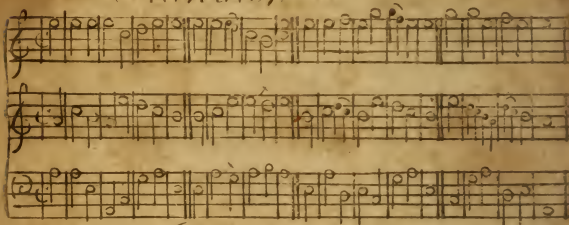
Handwritten musical notation for the piece 'All Saints'. It consists of three staves: a treble clef staff, a second treble clef staff, and a bass clef staff. The notation includes various note values and rests.

Mansfield

Handwritten musical notation for the piece 'Mansfield'. It consists of three staves: a treble clef staff, a second treble clef staff, and a bass clef staff. The notation includes various note values and rests.

//

Handwritten musical notation for an unnamed piece. It consists of three staves: a treble clef staff, a second treble clef staff, and a bass clef staff. The notation includes various note values and rests.

Canterbury*Windsor**Standish**Bangor*