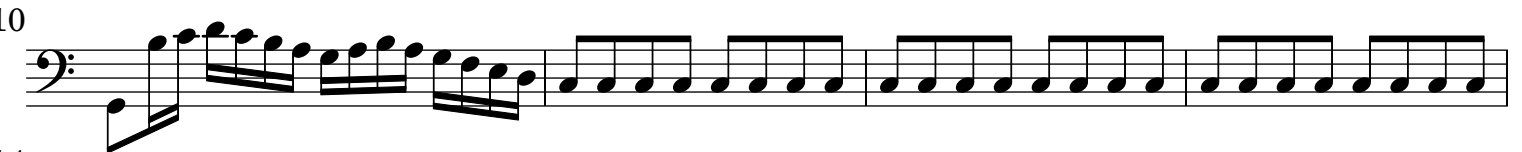


# Quartetto Op. 18

## Violoncello

J. C. Bach (1735-1782)

[1.] Allegro



Violoncello

2  
64  
68  
73  
78  
83  
87  
92  
97  
101  
107  
113  
119  
124  
131  
135

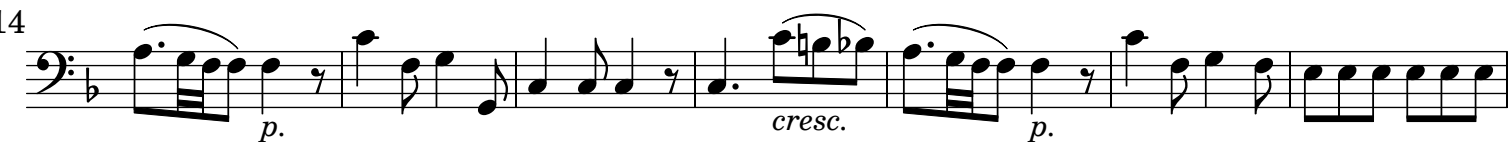
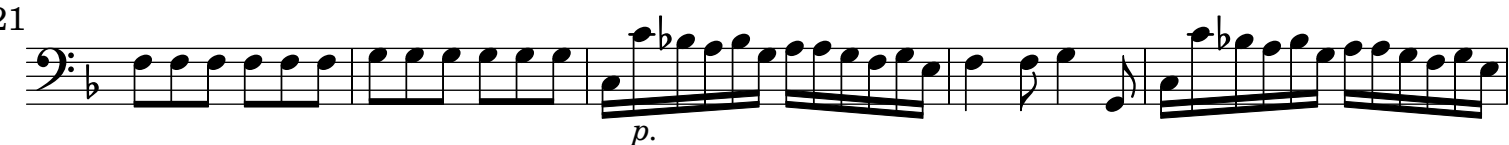
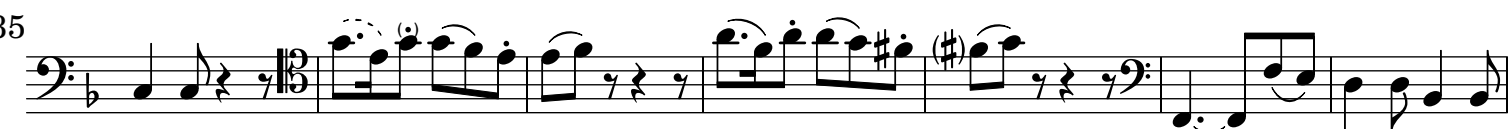
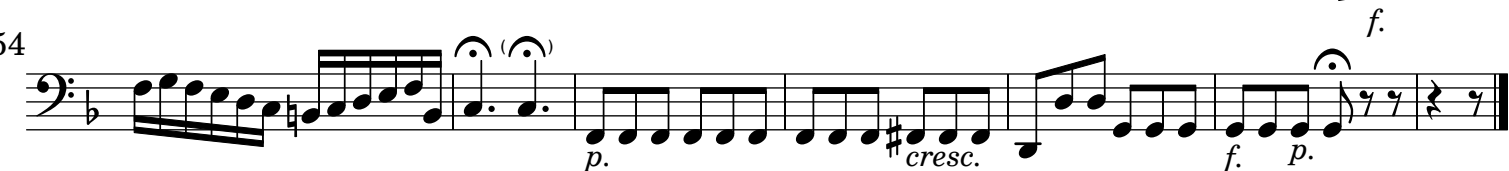
*mf.* *p.* *f.*

*cresc.* *p.*

*p.* *f.* *p.* *f.*

Detailed description: This image shows the cello part of a musical score for J.C. Bach's Quartetto Op. 1 - Rev. 1.0. The score is written in bass clef and consists of 135 measures. The notation includes various rhythmic patterns, such as eighth and sixteenth notes, and rests. Dynamic markings are present throughout, including *mf.*, *p.*, *f.*, *cresc.*, and *p.*. The key signature has one sharp (F#). The score is divided into systems, with measure numbers 2, 64, 68, 73, 78, 83, 87, 92, 97, 101, 107, 113, 119, 124, 131, and 135 indicated at the beginning of their respective lines.

## [2.] Andantino

*rinf.**p.**cresc.**p.**p.**p.**p.**cresc.**f.**p.*

## [3.] Allegro

*f.**p.*

34

41

49

57

66

72

80

88

96

102

107

115

123

131

138

*p.* *f.*

*p.* *p.* *cresc.* *f.*

2

*f.*

*f.*

*p.*

*f.*

*p.*

2

*f.*

2

*f.*

*f.*