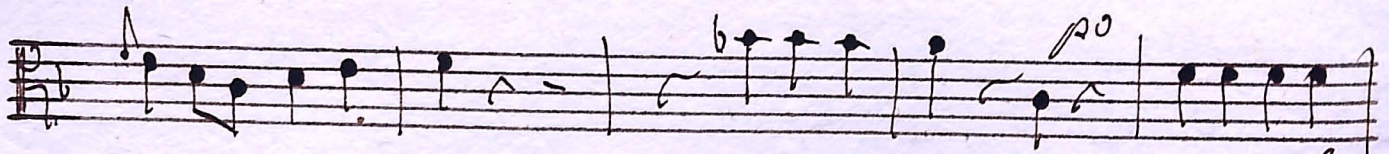
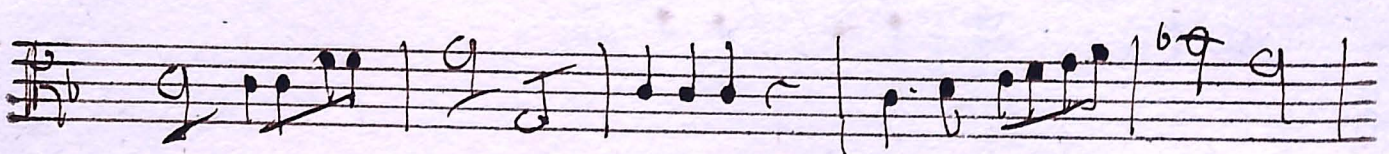
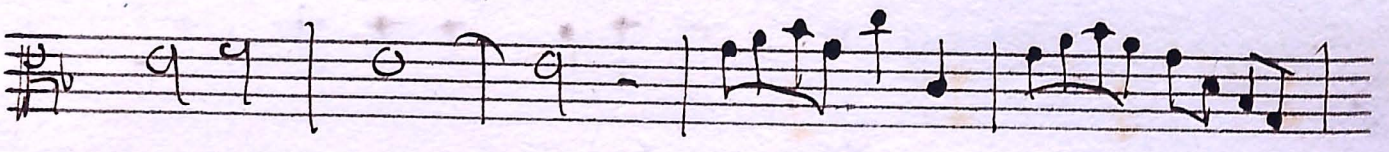
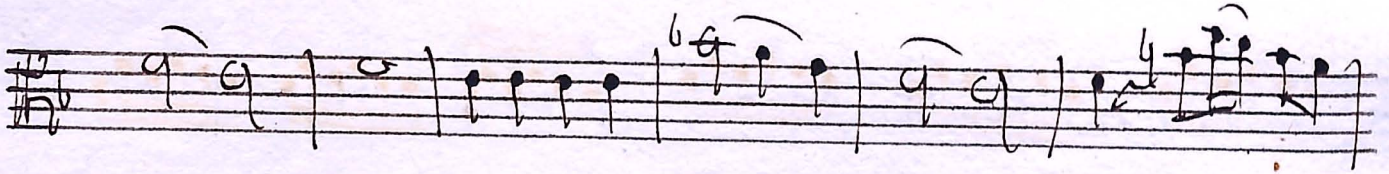
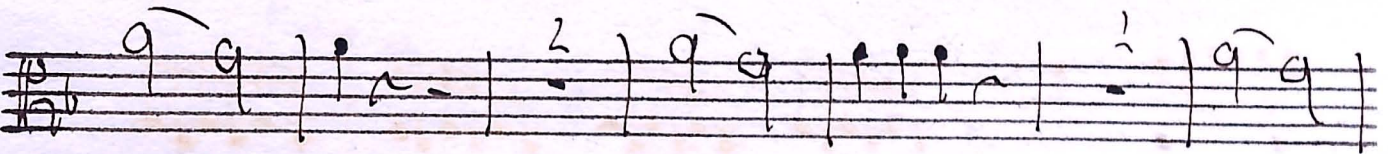
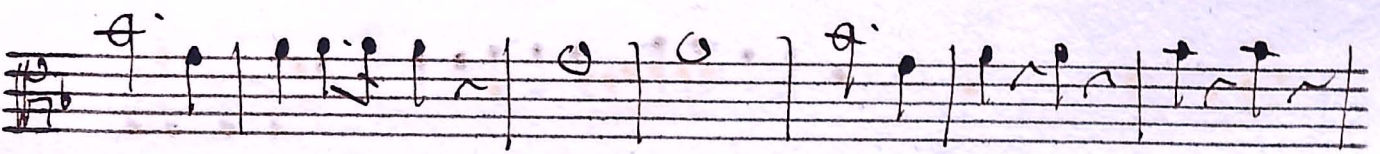
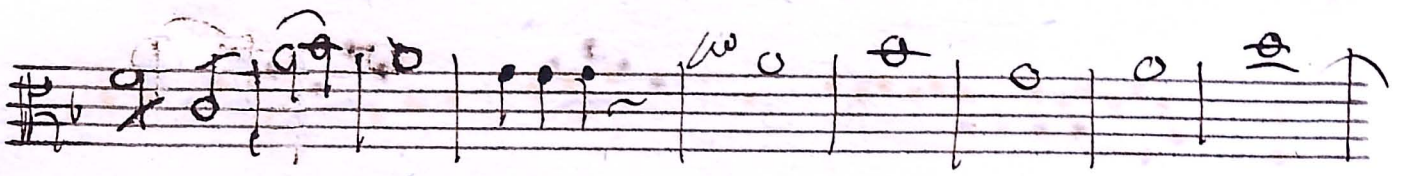
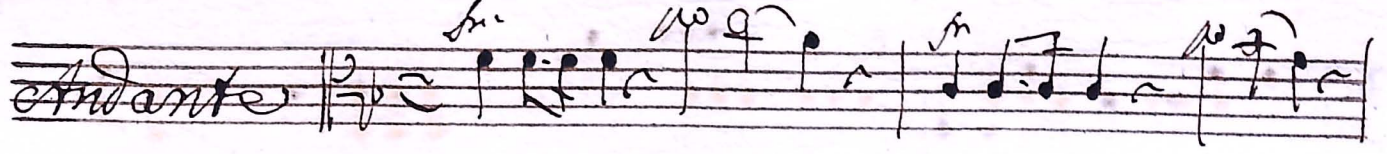


*Nunc dimittis. a. 3. voci con Strad.*

*Viola Prima.*



*Voltri*

Handwritten musical notation on a single staff, featuring a sequence of eighth and sixteenth notes with a trill-like passage.

Handwritten musical notation on a single staff, showing a melodic line with a slur and a fermata.

Handwritten musical notation on a single staff, including a trill and a fermata.

*soli*

Handwritten musical notation on a single staff, starting with a trill and followed by eighth notes.

Handwritten musical notation on a single staff, featuring a long note with a fermata.

*Andante*

Handwritten musical notation on a single staff, beginning with a treble clef and a key signature of one flat.

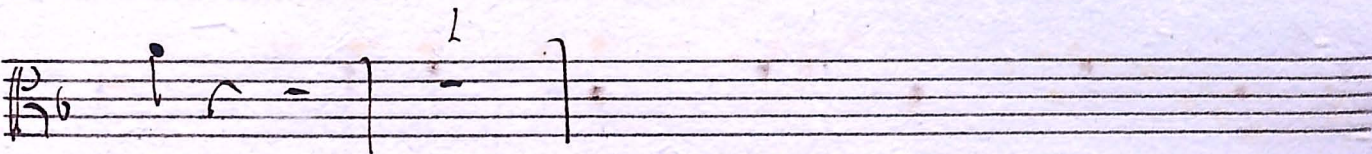
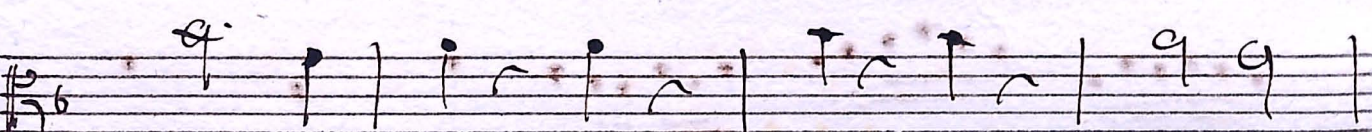
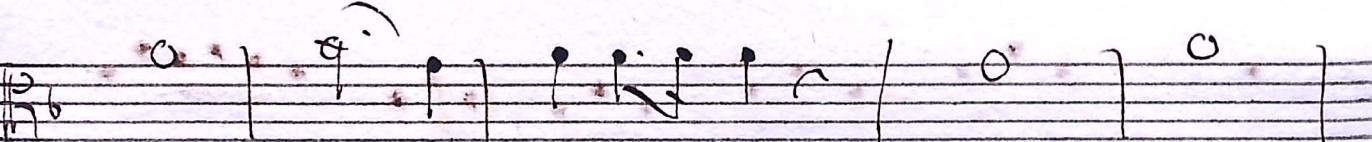
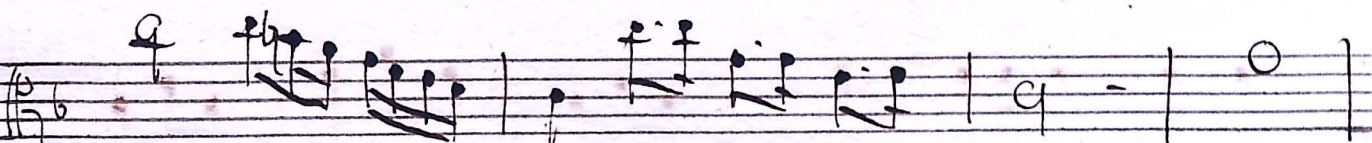
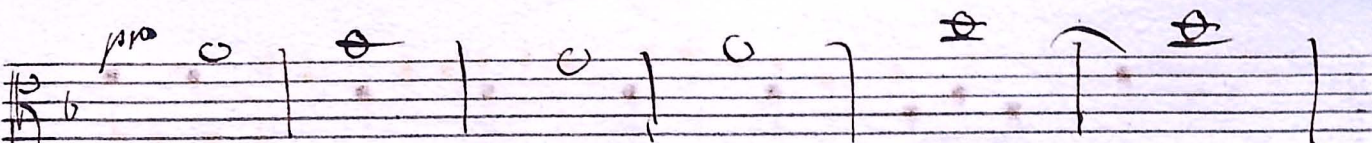
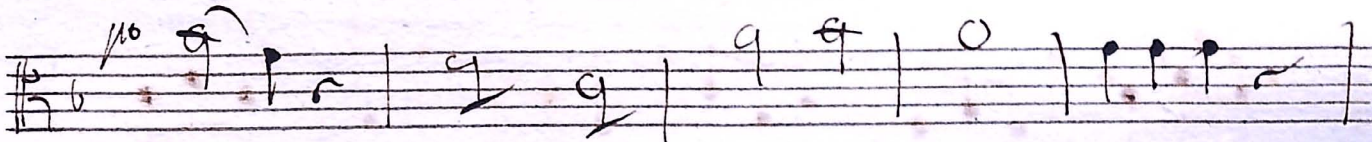
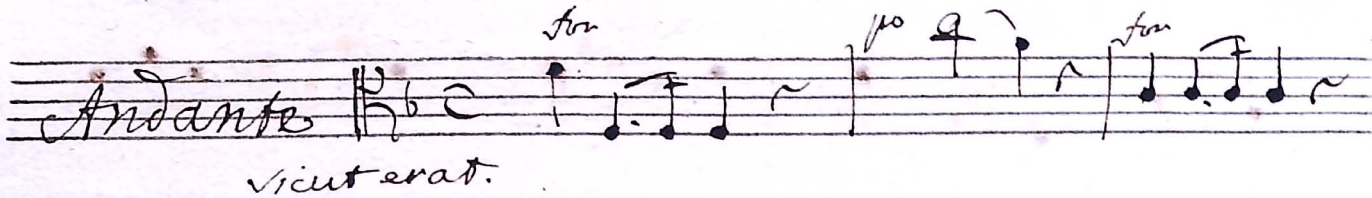
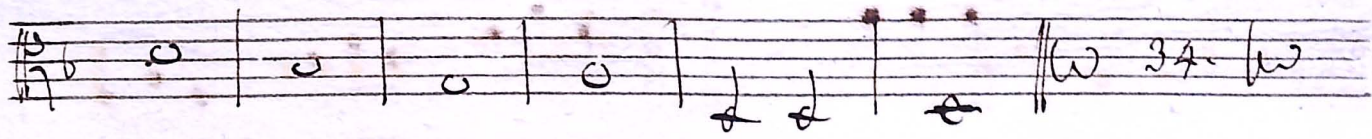
*Gloria*

Handwritten musical notation on a single staff, consisting of a series of half notes.

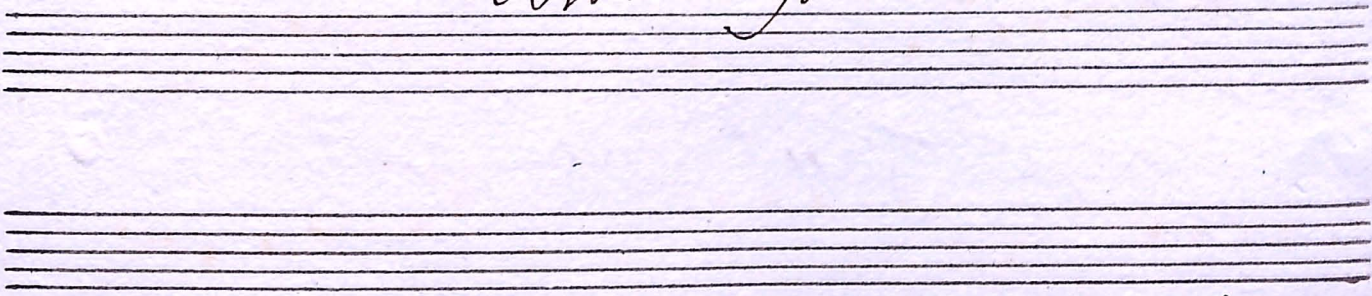
Handwritten musical notation on a single staff, featuring eighth notes and a fermata.

Handwritten musical notation on a single staff, showing a sequence of eighth notes with a fermata.

Handwritten musical notation on a single staff, consisting of a series of half notes.



*volti Presto.*



*All. molto*

*A Lay Deo.*