

Dragonette

Pistons

A

83

Soubre

Dragonnette



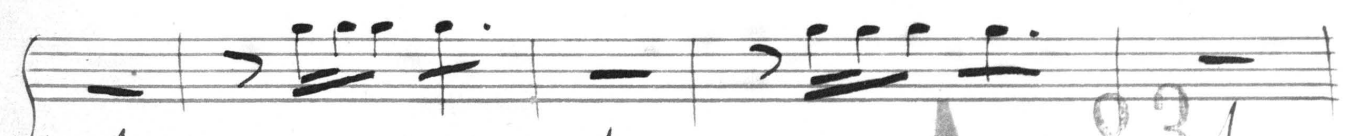
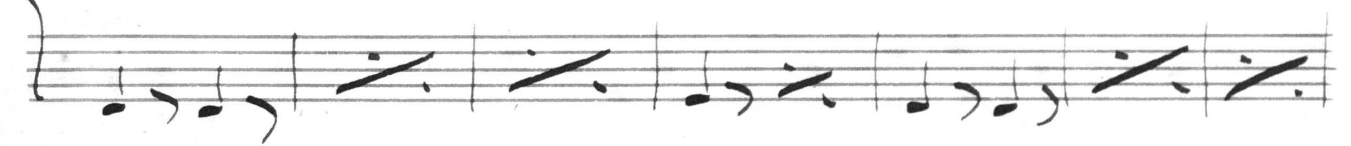
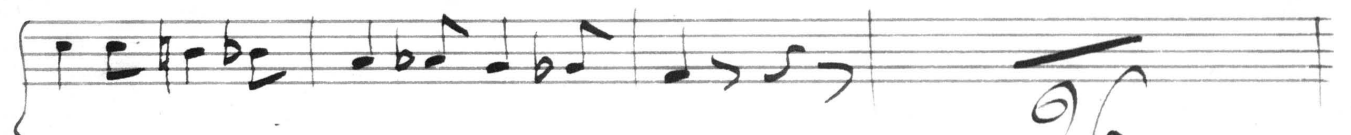
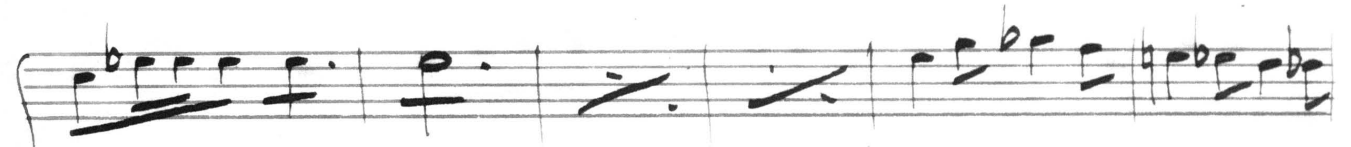
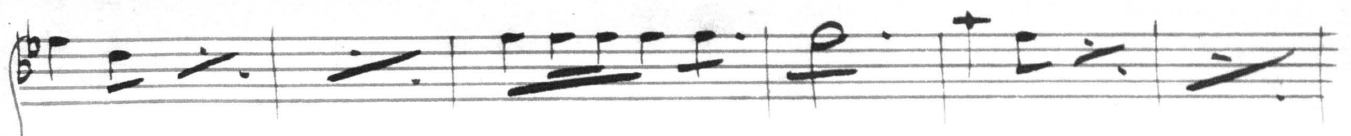
Pistons

A 83



Ouverture

All^o en La $\text{G} \text{B} \text{2/4}$ 30 | C || $\text{E} \text{b} \text{6/8}$ 21.



26.

1.

1.

A

831.

Handwritten musical notation for the first system, consisting of two staves. The top staff has a treble clef and a key signature of one flat (B-flat). The bottom staff has a bass clef and a key signature of one flat. The music includes various note values and rests.

Handwritten musical notation for the second system, consisting of two staves. The top staff has a treble clef and a 9/4 time signature. The bottom staff has a bass clef and a 9/4 time signature. The word "Presto" is written in the middle of the system.

Handwritten musical notation for the third system, consisting of two staves. The top staff has a treble clef and a key signature of one flat. The bottom staff has a bass clef and a key signature of one flat.

Handwritten musical notation for the fourth system, consisting of two staves. The top staff has a treble clef and a key signature of one flat. The bottom staff has a bass clef and a key signature of one flat.

Handwritten musical notation for the fifth system, consisting of two staves. The top staff has a treble clef and a key signature of one flat. The bottom staff has a bass clef and a key signature of one flat. The word "1a" is written above the first measure of both staves.

Handwritten musical notation for the sixth system, consisting of two staves. The top staff has a treble clef and a key signature of one flat. The bottom staff has a bass clef and a key signature of one flat.

No 1
tacet

à la santé du drapeau

2^o all^{to}

La

16^o suivez
a made

No 3

(aux soufflets dans la coulisse)

All to
Sib

pp *pp*

Solo *pp*

rit.

Handwritten musical notation on two staves. The first staff begins with a dynamic marking of *mp* and a fermata. The second staff begins with a dynamic marking of *pp* and a fermata. Both staves conclude with a fermata and the number '2' written below the staff.

Handwritten musical notation on two staves. The first staff begins with a dynamic marking of *pp* and a fermata. The second staff begins with a dynamic marking of *pp* and a fermata. Both staves conclude with a fermata and the number '6' written below the staff.

Handwritten musical notation on two staves. The first staff contains a fermata and the word *cres* written below the staff. The second staff contains a fermata.

Handwritten musical notation on two staves. The first staff begins with a fermata. The second staff begins with a fermata.

Handwritten musical notation on two staves. Both staves contain a fermata.

Handwritten musical notation on two staves. Both staves conclude with a large, decorative flourish.

Le lézard est l'ami de l'homme

4 Duo *All^o* *en La* $\text{♩} = 25$ $\text{♩} = 75$

mp

All^{to}
mod^{to}

4 8 1. *pp*

Handwritten musical notation for the first system, consisting of two staves with various notes and rests.

Handwritten musical notation for the second system, including a circled **10**, the tempo marking **Presto**, the number **16.**, and the dynamic marking **mf**.

Handwritten musical notation for the third system, featuring a large **9 f** marking.

Handwritten musical notation for the fourth system, showing rhythmic patterns with stems and beams.

Handwritten musical notation for the fifth system, including the tempo marking **Maestoso**.

Handwritten musical notation for the sixth system, including a circled **3**.

Handwritten musical notation for the first system. The treble staff contains a melodic line with a fermata over the first measure and a key signature change to two sharps (F# and C#) in the second measure. The bass staff contains a bass line with a large number '2' written below it. The word 'Soli' is written in cursive above the treble staff.

Handwritten musical notation for the second system. The treble staff contains a melodic line with a fermata over the first measure. The bass staff contains a bass line with a large number '8' written between the staves.

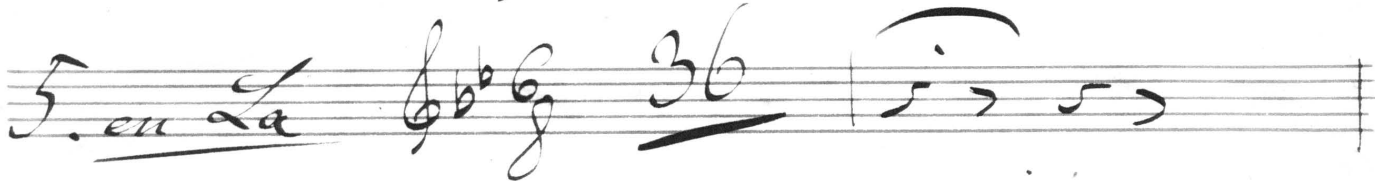
Handwritten musical notation for the third system. The treble staff contains a melodic line with a fermata over the first measure. The bass staff contains a bass line with a large number '5' written between the staves.

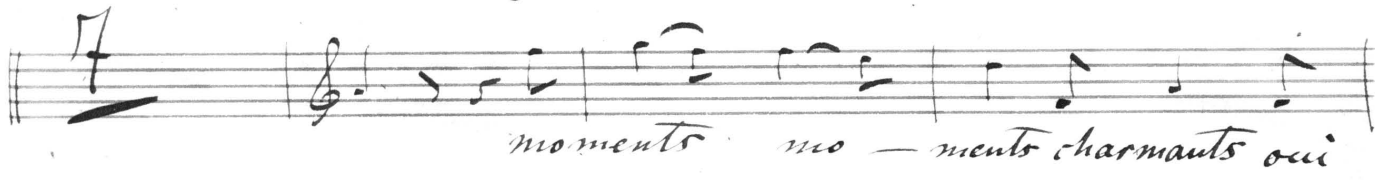
Handwritten musical notation for the fourth system. The treble staff contains a melodic line with a fermata over the first measure. The bass staff contains a bass line with a fermata over the first measure.

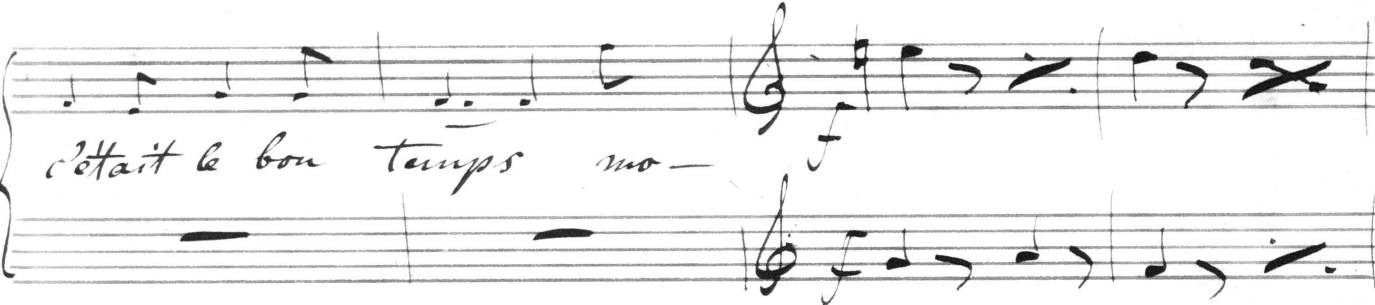
Handwritten musical notation for the fifth system. The treble staff contains a melodic line with a fermata over the first measure. The bass staff contains a bass line with a fermata over the first measure.

Handwritten musical notation for the sixth system. The treble staff contains a melodic line with a fermata over the first measure. The bass staff contains a bass line with a large flourish at the end.

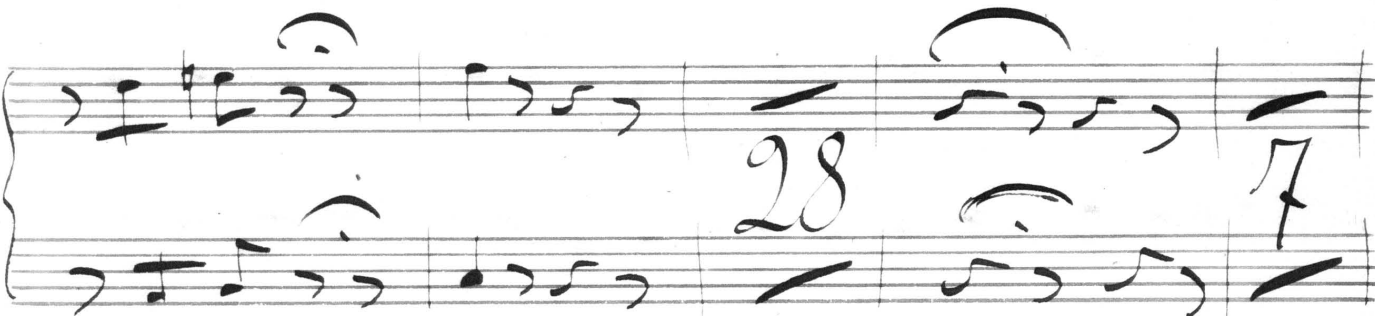
ce n'est mon quel souvenir

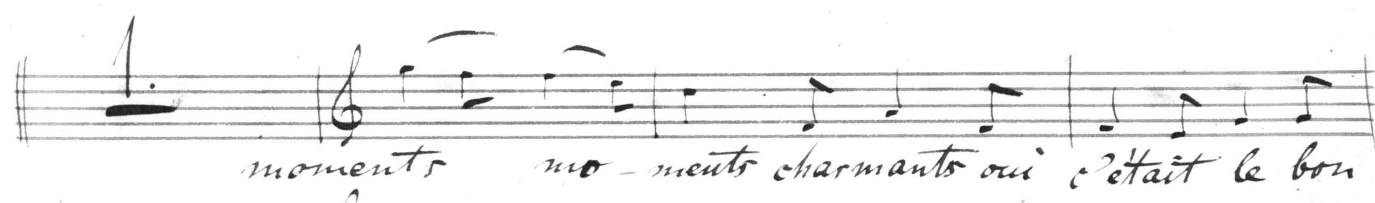
5. *en La* 

7 
moments mo - ments charmants oui

c'était le bon temps mo - 





1. 
moments mo - ments charmants oui c'était le bon

temps mo - 

Handwritten musical notation for the first system, consisting of two staves with notes and rests.

Handwritten musical notation for the second system, consisting of two staves with notes and rests.

Handwritten musical notation for the third system, including a *Vivo* tempo marking and the number 14. The text "charges l'anne" is written below the staff.

Handwritten musical notation for the fourth system, featuring a triplet of eighth notes.

Handwritten musical notation for the fifth system, featuring a triplet of eighth notes.

Handwritten musical notation for the sixth system, featuring a triplet of eighth notes.

p

Lento

all^{to}

cres

39 *prenez garde à vous* *mon Dieu*

mon Dieu protège moi mon Dieu protège moi

2.

Handwritten musical notation, first system. Two staves. The right staff begins with a treble clef and a key signature of one flat (B-flat). The left staff begins with a bass clef. The music consists of eighth and sixteenth notes. A dynamic marking of *f* is present in the first measure of the right staff. A large number '9' is written between the staves in the second measure.

Handwritten musical notation, second system. Two staves. The right staff begins with a treble clef and a key signature of one flat. The left staff begins with a bass clef. The music consists of eighth and sixteenth notes. A dynamic marking of *f* is present in the second measure of the right staff.

Handwritten musical notation, third system. Two staves. The right staff begins with a treble clef and a key signature of one flat. The left staff begins with a bass clef. The music consists of eighth and sixteenth notes. A dynamic marking of *f* is present in the second measure of the right staff. A large number '9' is written between the staves in the second measure.

Handwritten musical notation, fourth system. Two staves. The right staff begins with a treble clef and a key signature of one flat. The left staff begins with a bass clef. The music consists of eighth and sixteenth notes. A dynamic marking of *f* is present in the first measure of the right staff. A large number '9' is written between the staves in the first measure.

Handwritten musical notation, fifth system. Two staves. The right staff begins with a treble clef and a key signature of one flat. The left staff begins with a bass clef. The music consists of eighth and sixteenth notes.

Handwritten musical notation, sixth system. Two staves. The right staff begins with a treble clef and a key signature of one flat. The left staff begins with a bass clef. The music consists of eighth and sixteenth notes.

No 6 taret
par dessus ma tête

Final *All^{to}* *en La* $\frac{6}{8}$ *50* *j'en tends a*

vec mon coeur mon coeur c'est lui c'est mon Jus

Handwritten musical notation on two staves. The first staff contains a half note, a quarter note, and a half note. The second staff contains a half note, a quarter note, and a half note, with a large number '3' written above the first measure.

Handwritten musical notation on two staves. The first staff contains a series of eighth notes. The second staff contains a series of eighth notes.

Handwritten musical notation on two staves. The first staff contains a series of eighth notes. The second staff contains a series of eighth notes. A large number '20.' is written at the end of the second staff.

Handwritten musical notation on two staves. The first staff contains a series of eighth notes. The second staff contains a series of eighth notes. A large number 'p' is written above the second measure of the second staff.

Handwritten musical notation on two staves. The first staff contains a series of eighth notes. The second staff contains a series of eighth notes. A large number '6' is written above the second measure of the second staff.

Handwritten musical notation on two staves. The first staff contains a series of eighth notes. The second staff contains a series of eighth notes. A large number '3' is written above the first measure of the first staff, and a large number '6' is written above the first measure of the second staff.

Handwritten musical notation on two staves. The top staff features a treble clef and contains a melodic line with a triplet of eighth notes and a dynamic marking of *p*. The bottom staff features a bass clef and contains a bass line with a dotted half note and a fermata.

Handwritten musical notation on two staves. The top staff features a treble clef and contains a melodic line with a fermata. The bottom staff features a bass clef and contains a bass line with a fermata.

Handwritten musical notation on two staves. The top staff features a treble clef and contains a melodic line with a triplet of eighth notes. The bottom staff features a bass clef and contains a bass line with a triplet of eighth notes.

Handwritten musical notation on two staves. The top staff features a treble clef and contains a melodic line with a fermata. The bottom staff features a bass clef and contains a bass line with a fermata.

Handwritten musical notation on two staves. The top staff features a treble clef and contains a melodic line with a fermata. The bottom staff features a bass clef and contains a bass line with a fermata.

Handwritten musical notation on two staves. The top staff features a treble clef and contains a melodic line with a fermata. The bottom staff features a bass clef and contains a bass line with a fermata.

Handwritten musical notation on two staves. The top staff features a treble clef and contains a melodic line with a fermata. The bottom staff features a bass clef and contains a bass line with a fermata.

Handwritten musical notation on two staves. The top staff features a treble clef and contains a melodic line with a fermata. The bottom staff features a bass clef and contains a bass line with a fermata.

Handwritten musical notation on two staves. The top staff features a treble clef and contains a melodic line with a fermata. The bottom staff features a bass clef and contains a bass line with a fermata.

Handwritten musical notation on two staves. The top staff features a treble clef and contains a melodic line with a fermata. The bottom staff features a bass clef and contains a bass line with a fermata. The piece concludes with a large, decorative flourish.