

Missa I.

A. h.

Violino I.

K *Vrie.*

Christe Tacet.

K *Vrie.*

E *In Terra.*

P *Atrem.*

A

Mus. 2368-D-1

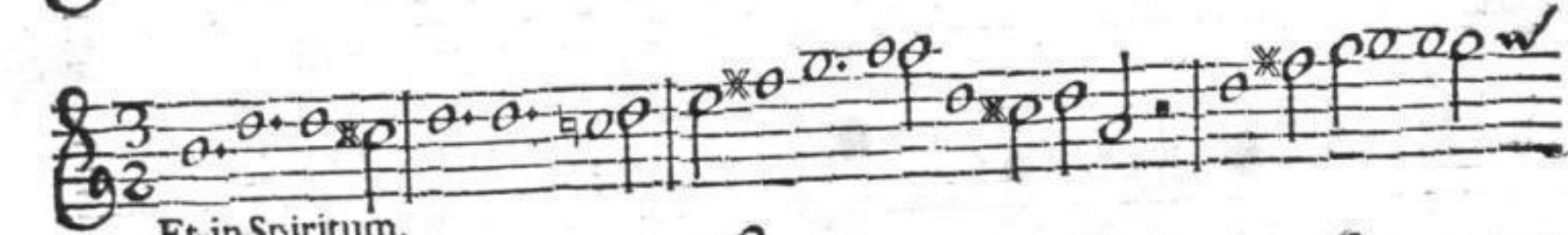




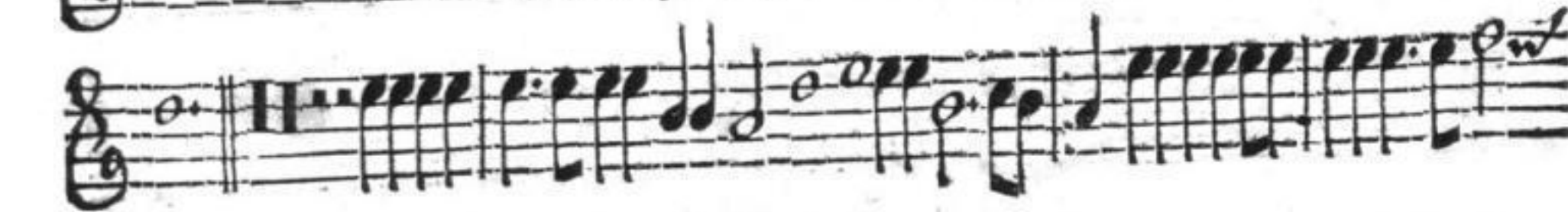
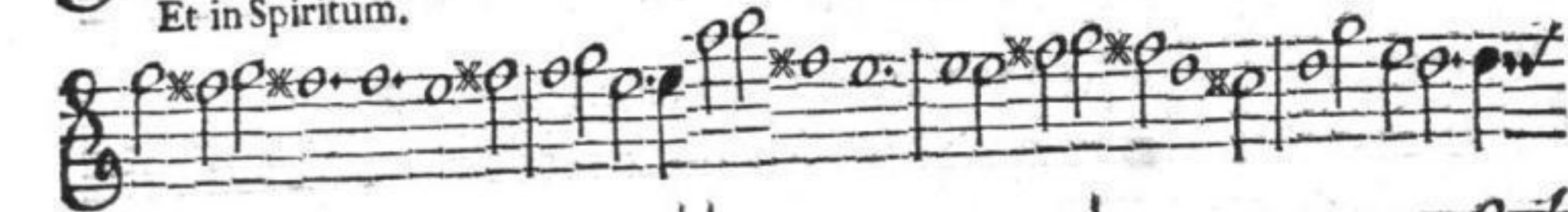
Crucifixus.



Et iterum,



Et in Spiritum.



Amen.



S *Anctus.*

Pleni.

O *Sanna.*

B *Enedictus.*

Osanna da Capo.

A *Gnus.*

presto.
Dona.

Four staves of musical notation in G major, 4/4 time. The first staff begins with a treble clef and a key signature of one sharp (F#). The music consists of eighth and sixteenth notes, with some rests and dynamic markings like 'p' and 'f'.



Missa II.

H. h.

K *Kyrie*

Two staves of musical notation. The first staff starts with a treble clef, a key signature of one sharp (F#), and a 3/4 time signature. The music features a mix of eighth and sixteenth notes.

Second staff of musical notation for the Kyrie section, continuing the melodic line.

Third staff of musical notation for the Kyrie section, ending with a double bar line.

C *Christe.*

Two staves of musical notation. The first staff starts with a treble clef, a key signature of one sharp (F#), and a common time signature (C). It includes dynamic markings for 'piano' and 'fort.'.

Two staves of musical notation. The first staff starts with a treble clef, a key signature of one sharp (F#), and a common time signature (C). The text 'Kyrie da Capo.' is written to the right of the second staff.

E *In Terra.*

Two staves of musical notation. The first staff starts with a treble clef, a key signature of one sharp (F#), and a common time signature (C). The text 'In Terra.' is written below the first staff.

Qui tollis.

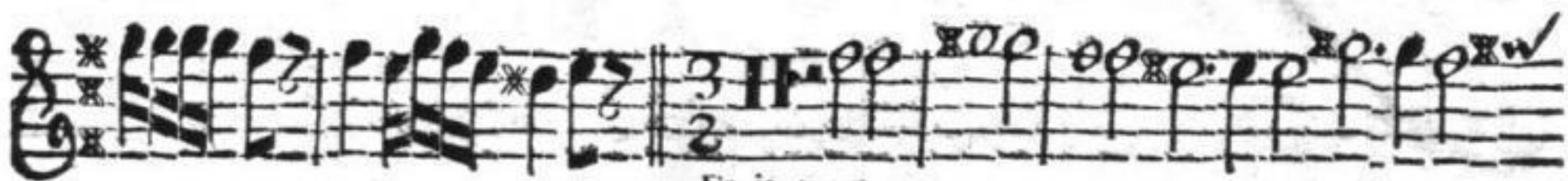
Quoniam.

Atrem.

Et incarnatus.

B

Crucifixus.



Et iterum,



Et unam.



piano.



S Anctus.



piano.

forte.



7.

O *Sanna.* piano. fort. piano. fort.

B *Ene dictus.*

Ofan-
na da
Capo.

A *Gnus.*

Dona.

piano. *forte.*

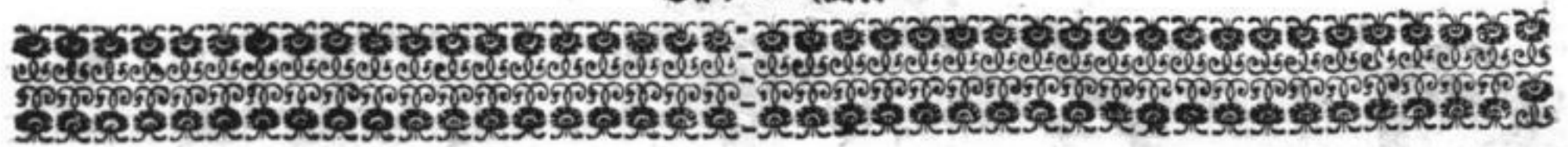
piano

forte.

piano. *forte.*

piano. *forte.*

piano. *forte.*



Missa III. C. b.

K *rie.*

E *in Terra.*

S *Anctus.*

O *Sanna.*

Musical notation for the first system of the *Sanna* section.

Musical notation for the second system of the *Sanna* section.

Musical notation for the third system of the *Sanna* section, ending with the instruction: *Benedict. Tacet. Ofanna da Capo.*

A *Gnus Dei.*

Musical notation for the first system of the *Gnus Dei* section.

Musical notation for the second system of the *Gnus Dei* section.

Musical notation for the third system of the *Gnus Dei* section.

Musical notation for the fourth system of the *Gnus Dei* section, starting with the instruction: *Dona.*

Musical notation for the fifth system of the *Gnus Dei* section.

Missä IV. D. h.

K *Kyrie.*

C *Hriste.*

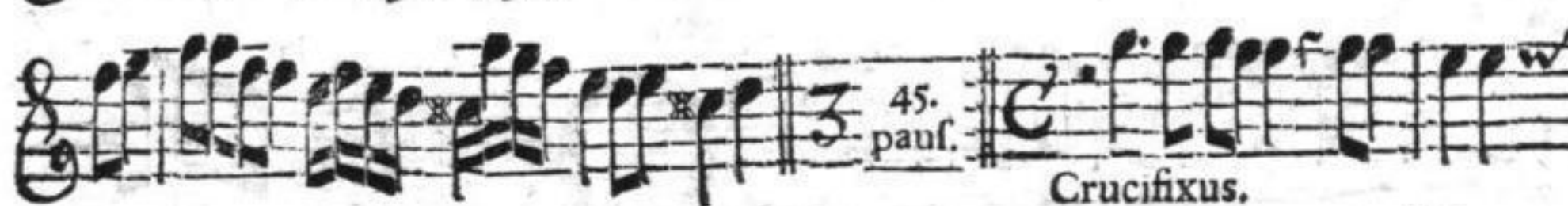
Kyrie da Capo.

E *In Terra.*





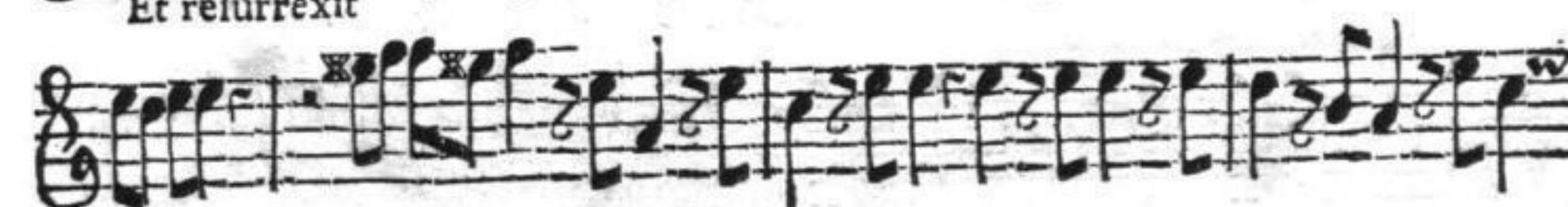
Atrem.



Crucifixus.



Et resurrexit



D

Et in Spiritum.

S *Anctus.*

O *Sanna.*

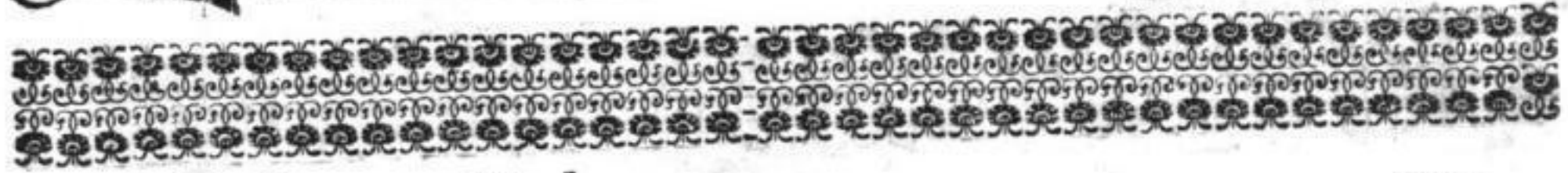
B *Benedictus.*

15. **Ofanna da Capo.**

Agnus Dei.

Dona.

Dona : Da Capo usque ad



Missa V. E. h.

Kyrie

Criste Kyrie

Handwritten musical score for a piece in G major, 3/4 time. The score consists of ten staves of music. The first staff begins with a treble clef, a key signature of one sharp (F#), and a common time signature (C). The music is written in a single system. The second staff features a large 'E' time signature and the text 'I in Terra.' below it. The sixth staff is marked 'presto.' and contains the text 'Qui tollis.' below it. The eighth staff is marked 'tr.' and contains the text 'Quon.' below it. The score includes various rhythmic values such as eighth, sixteenth, and thirty-second notes, as well as rests and dynamic markings like 'f' and 'ff'.

alla breve.
P
Atrem.

Et in unum.

alla breve.
Et incarnatus.

Voltate.

E

Musical staff with treble and bass clefs, key signature of one sharp (F#), and a 3/4 time signature. The music features a complex rhythmic pattern with many sixteenth notes. A '4' is written below the staff. The text 'Et iterum.' is centered below the staff.

Musical staff with treble and bass clefs, key signature of one sharp, and a 3/4 time signature. The music continues with similar rhythmic complexity.

Musical staff with treble and bass clefs, key signature of one sharp, and a 3/4 time signature. The music continues with similar rhythmic complexity.

Musical staff with treble and bass clefs, key signature of one sharp, and a 3/4 time signature. The music continues with similar rhythmic complexity.

Musical staff with treble and bass clefs, key signature of one sharp, and a 3/4 time signature. The music continues with similar rhythmic complexity.

Musical staff with treble and bass clefs, key signature of one sharp, and a 3/4 time signature. The music continues with similar rhythmic complexity.

Musical staff with treble and bass clefs, key signature of one sharp, and a 3/4 time signature. The music continues with similar rhythmic complexity.

Musical staff with treble and bass clefs, key signature of one sharp, and a 3/4 time signature. The music continues with similar rhythmic complexity.

Musical staff with treble and bass clefs, key signature of one sharp, and a 3/4 time signature. The music continues with similar rhythmic complexity.

Musical staff with treble and bass clefs, key signature of one sharp, and a 3/4 time signature. The music continues with similar rhythmic complexity.

Musical staff with treble and bass clefs, key signature of one sharp, and a 3/4 time signature. The music continues with similar rhythmic complexity.

Musical staff with treble and bass clefs, key signature of one sharp, and a 3/4 time signature. The music continues with similar rhythmic complexity.

Et iterum.

S Anctus.

O Sanna.

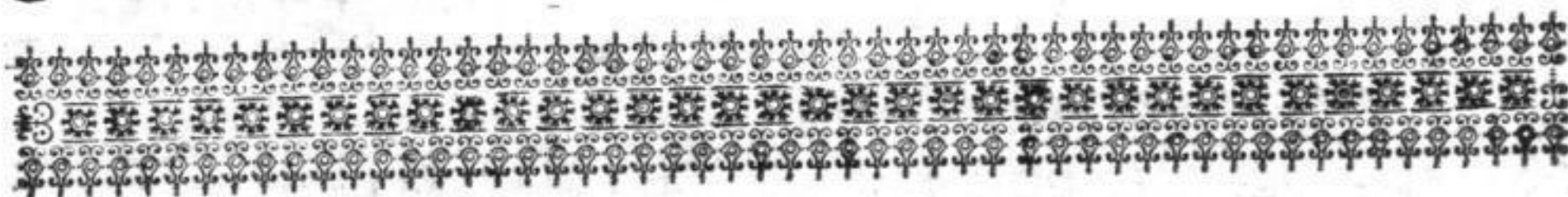
Benedictus tacet.
Osanna ut supra.

piano. forte.

A gnus DEI.

Dona,

Musical score for the first section, consisting of five staves of music. The notation includes various rhythmic values, accidentals, and dynamic markings such as *piano.* and *forte.* The music is written in a single system.



Missa VI. F. b.

K *irie.*

Musical notation for the beginning of the Kyrie section, starting with a large 'K' and a treble clef. The key signature is two flats (B-flat and E-flat) and the time signature is common time (C). The notation includes various rhythmic values and accidentals.

Continuation of the musical notation for the Kyrie section, showing further rhythmic and melodic development.

C *Hriste.*

Musical notation for the beginning of the Christe section, starting with a large 'C' and a treble clef. The key signature is two flats (B-flat and E-flat) and the time signature is 3/4. The notation includes various rhythmic values and accidentals.

Continuation of the musical notation for the Christe section, showing further rhythmic and melodic development.

Musical notation for the end of the section, including the instruction *Kyrie da Capo* and a double bar line with repeat dots.

E *In Terra.*

tardè.

piano.

P *Atrem.*

Genitum.

Et incarn.

Crucifixus.

tr.

tr.

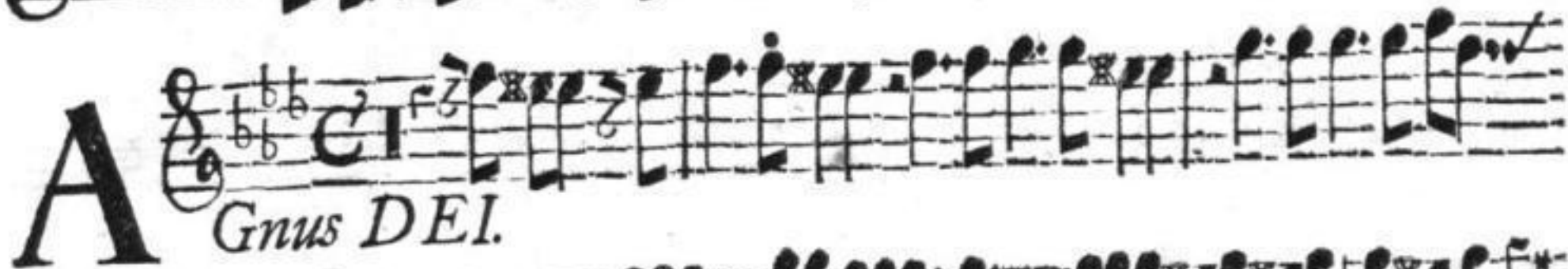
Et in Sp.

F

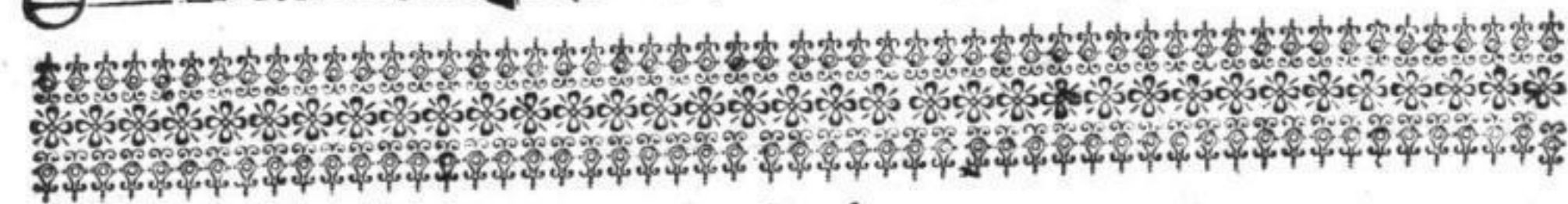




Osanna da Capo.



Dona.



Missa. VII.

G. b.



alla breve.
C *Hriste.*

Kyrie da Capo.

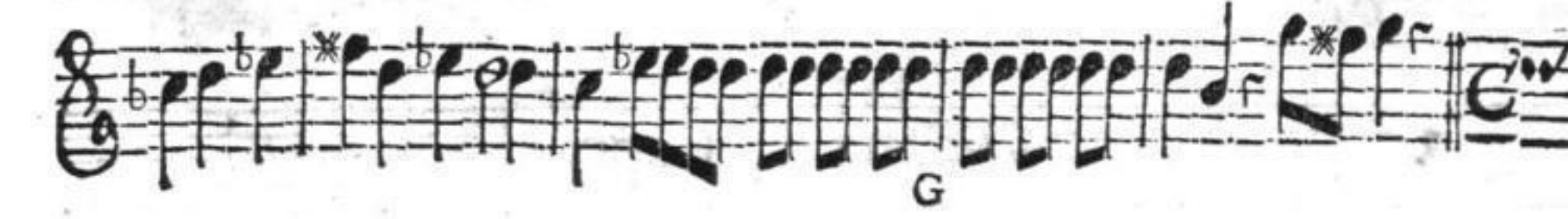
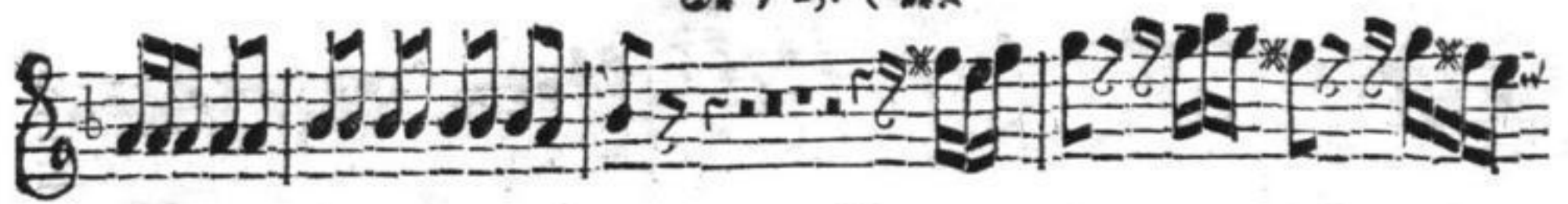
E *In Terra.*

Domine.

Qui tollis. Sulcipe.

Quoniam.

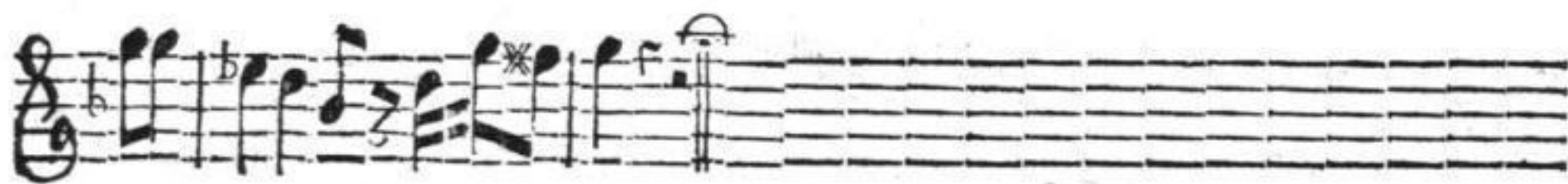
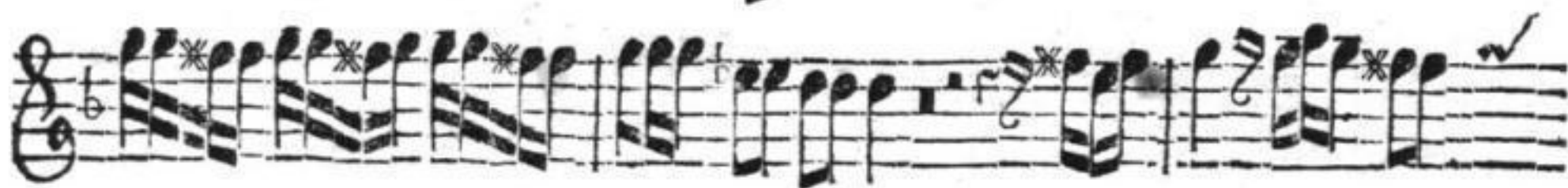
Cum Sanc.



G



Et in Spiritum.



Anctus

piano.

forte

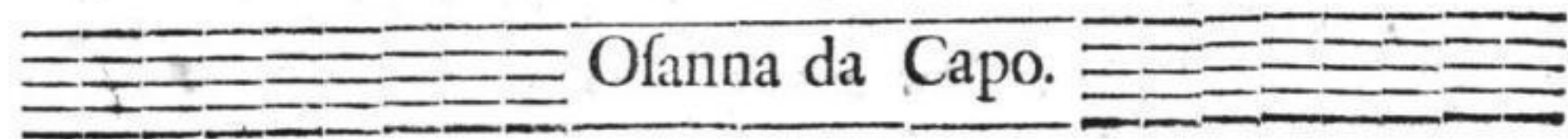


presto.

Sanna.



Enedictus.



Osanna da Capo.

A
S
S
S
S

A *Gnus DEI.*

tr.

presto

Dona nobis.

piano

piano

