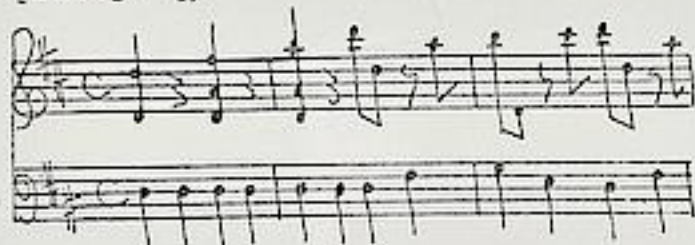


Brioschi, Antonio

BRD DS Mus.ms 121/6

D.#./SJNFONJA./à/2.Violini,/Viola/e/Basso./di/Brioschi./  
[Incipit]/



Allegro  $\text{♩}$  D-dur - An-  
dante  $\text{♩}$  d-moll - Presto  
 $3/8$  D-dur - Allegro  $\text{♩}$   
D-dur - Presto  $3/8$  D-dur.

Ms.ca.1745 (Endler).

36 x 23,5 cm.

WZ: -

7 St.:vl 1(2x),2,vla,b(3x).  
je 1 Bl.

Eine b-St.bez.

Mus 121  
ms 6

D. #.

# SINFONIA.

ã

2. Violini,

Viola

<sup>e</sup>  
Basso.

di

Brioschi.



# Violino I.

*Allegro.*

*Andante.*

*Trasto.*

*Allegro.*

*Allegro.*

Handwritten musical score for 'Allegro' in 2/4 time. The score consists of seven staves. The first staff contains the tempo marking 'Allegro.' and the beginning of the melody. The subsequent staves show a complex accompaniment with many sixteenth and thirty-second notes. The piece concludes with a double bar line and the text 'Da Capo ||'.

*Frisso.*

Handwritten musical score for 'Frisso' in 3/8 time. The score consists of three staves. The first staff contains the tempo marking 'Frisso.' and the beginning of the melody. The second and third staves show a complex accompaniment with many sixteenth and thirty-second notes. The piece concludes with a double bar line.



*Viola.*

*Allegro.*  $\frac{3}{4}$  C

*Andante.*  $\frac{3}{4}$  C

*Presto.*  $\frac{3}{4}$  C

*Allegro.*

*Allegro.*

Da Capo ||

*Presto.*

Basso.

*Allegro.* C major, common time. Handwritten musical notation for the first section, consisting of seven staves of music.

*Andante.* C major, common time. Handwritten musical notation for the second section, consisting of three staves of music.

*Fresto.* C major, 3/8 time. Handwritten musical notation for the third section, consisting of two staves of music.

Handwritten musical notation for the end of the third section, consisting of one staff.

*Allegro.*



*Allegro* C 

*Da Capo* ||

*Andante* C 

*Handwritten signature*



Violino 2.

*Allegro.* 















*Andante.* 

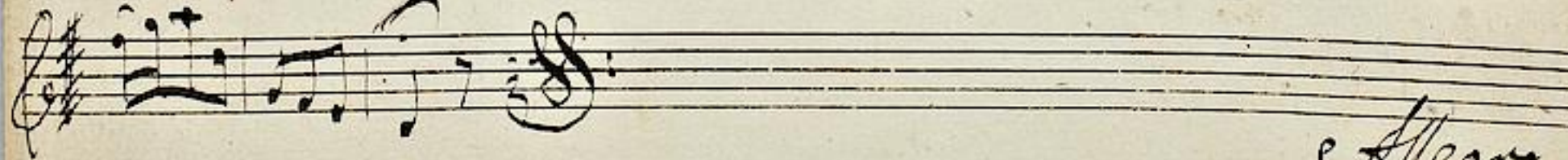






*Presto* 





*Allegro.*

*Allegro.*

*Allegro.*

*Da Capo* ||

*Presto.*

*Allegro.*

*Basso.*

*Andante*

*Presto.*

*Allegro.*

*Allegro*

Handwritten musical score for 'Allegro'. The score consists of five staves of music. The first staff begins with a treble clef, a key signature of one sharp (F#), and a common time signature (C). The music is written in a cursive hand and includes various rhythmic values, accidentals, and fingerings. The second and third staves continue the melodic line. The fourth staff features a more complex rhythmic pattern with many sixteenth notes. The fifth staff concludes the piece with a double bar line and the text 'La Capell' written in a decorative, cursive font.

Handwritten musical score for 'Presto'. The score consists of two staves of music. The first staff begins with a treble clef, a key signature of one sharp (F#), and a 3/8 time signature. The music is written in a cursive hand and includes various rhythmic values, accidentals, and fingerings. The second staff continues the melodic line and ends with a double bar line. There is a scribble of ink on the right side of the page below the second staff.

# Violino Primo

*Allegro*

*Andante*

*Presto*

*Allegro*

20  
Allegro

Da Capo //

Treppo.

# Basso.

## Allegro

Handwritten musical score for the first section, 'Allegro'. It consists of seven staves of music. The first staff begins with a treble clef, a key signature of one sharp (F#), and a common time signature (C). The music is written in a cursive hand and includes various rhythmic values and accidentals.

## Andante

Handwritten musical score for the second section, 'Andante'. It consists of three staves of music. The first staff begins with a treble clef, a key signature of one sharp (F#), and a common time signature (C). The music is written in a cursive hand and includes various rhythmic values and accidentals.

## Presto

Handwritten musical score for the third section, 'Presto'. It consists of three staves of music. The first staff begins with a treble clef, a key signature of one sharp (F#), and a 3/8 time signature. The music is written in a cursive hand and includes various rhythmic values and accidentals.

## Allegro

*Allegro.*

Handwritten musical score for the first system, consisting of five staves. The notation includes treble and bass clefs, a key signature of one sharp (F#), and a common time signature (C). The music features various rhythmic values and articulation marks. The system concludes with a double bar line and the word "Capo" written below the staff.

*Presto*

Handwritten musical score for the second system, consisting of two staves. The notation includes treble and bass clefs, a key signature of one sharp (F#), and a 3/8 time signature. The music is more rhythmic and ends with a double bar line and a flourish.