

Concerto in re minore FaWV L: d7

Basso

J. F. Fasch (1688-1758)

[1.] Allegro

5

10

17

22

28

34

39

44

51

63

68

73

79

84

88

95

102

107

111

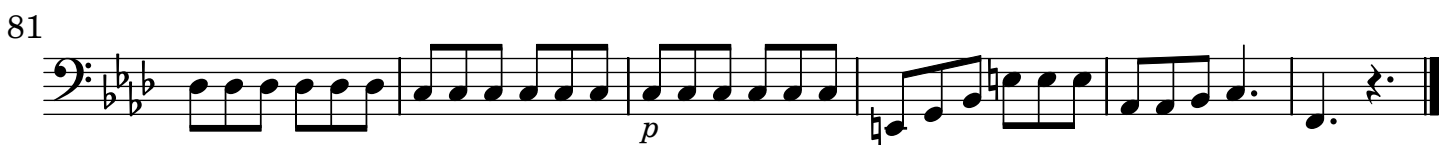
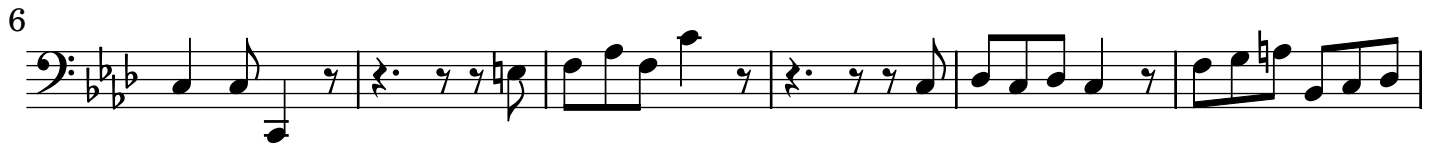
114

120

127

Detailed description of the musical score: The score is for a Bassoon part in F major, 3/4 time. It consists of 131 measures. The key signature has one flat (Bb). The score is divided into systems of five measures each, with measure numbers 68, 73, 79, 84, 88, 95, 102, 107, 111, 114, 120, and 127 marking the beginning of each system. Dynamics include piano (p) and forte (f). A fermata is present over measure 96. A second ending bracket covers measures 95-96. The piece concludes with a double bar line at the end of measure 131.

[2.] Andante



[3.] Allegro

Musical score for Bassoon in 3/4 time, marked Allegro. The score consists of 11 staves of music, starting at measure 4 and ending at measure 113. The key signature has one flat (B-flat). Dynamics include *p* (piano), *f* (forte), and *Tutti*. There are several fermatas and repeat signs throughout the piece.

Measure numbers: 4, 7, 14, 21, 28, 35, 63, 70, 83, 90, 106, 113.

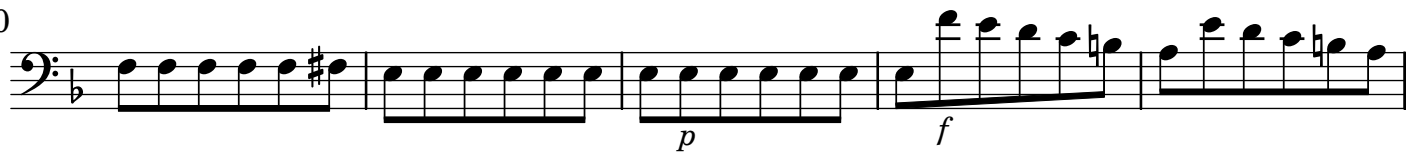
Dynamics: *p*, *f*, *Tutti*.

Performance markings: *t* (trill), *f* (fermata), *p* (piano), *f* (forte), *Tutti*.

120



130



135



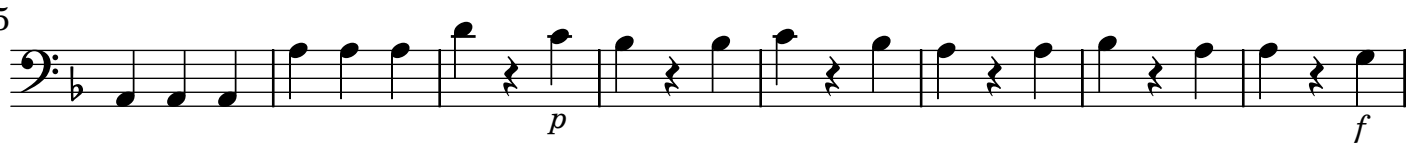
141



148



155



163



170



177



184



191

