

CONCERTI GROSSI

A QUATRO e SEI STRUMENTI,

Cioè a due, & quattro Violini, Alto Viola, e Violoncello,
con due Violini e Basso di Ripiena.

DI

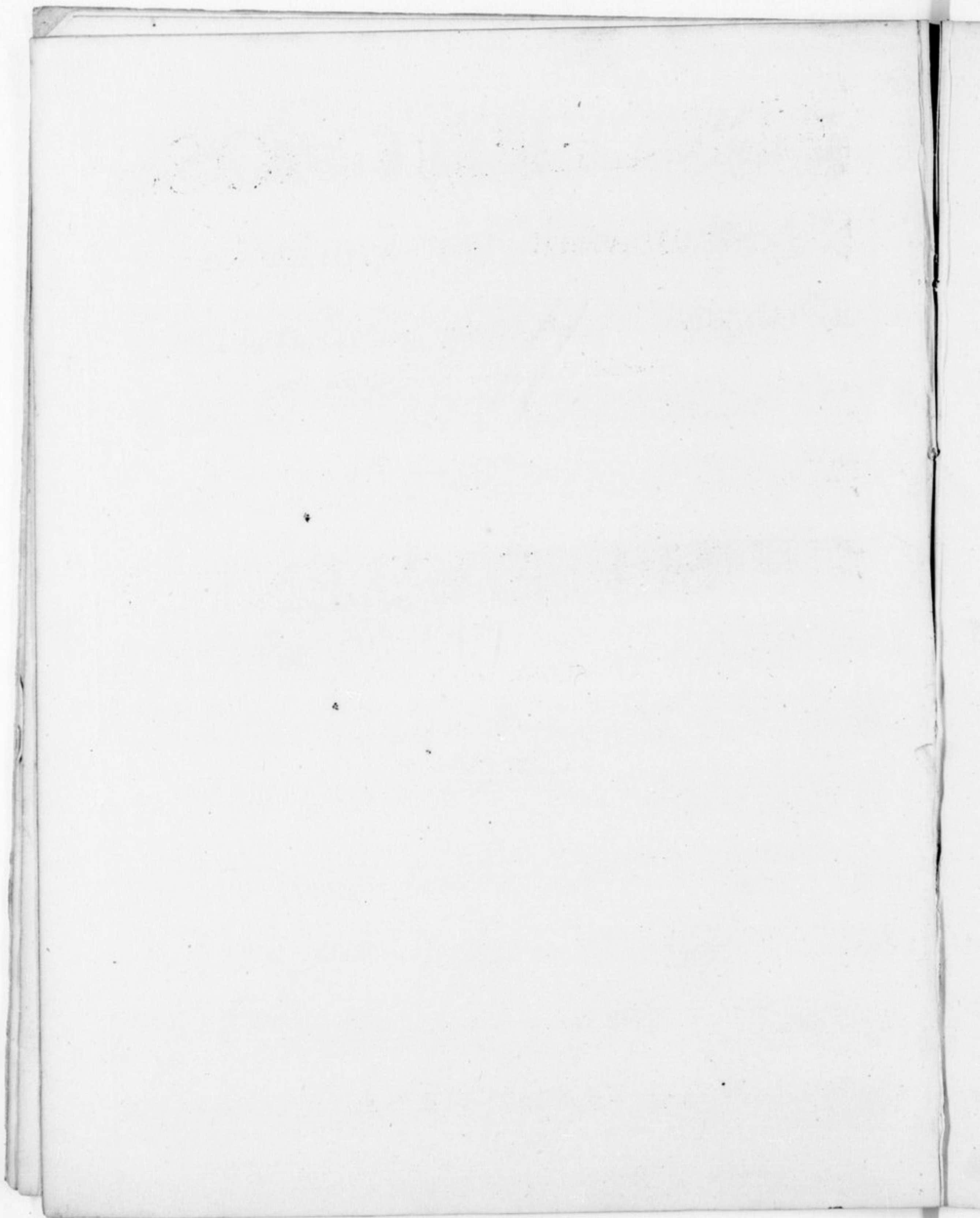
GIUSEPPE VALENTINI.

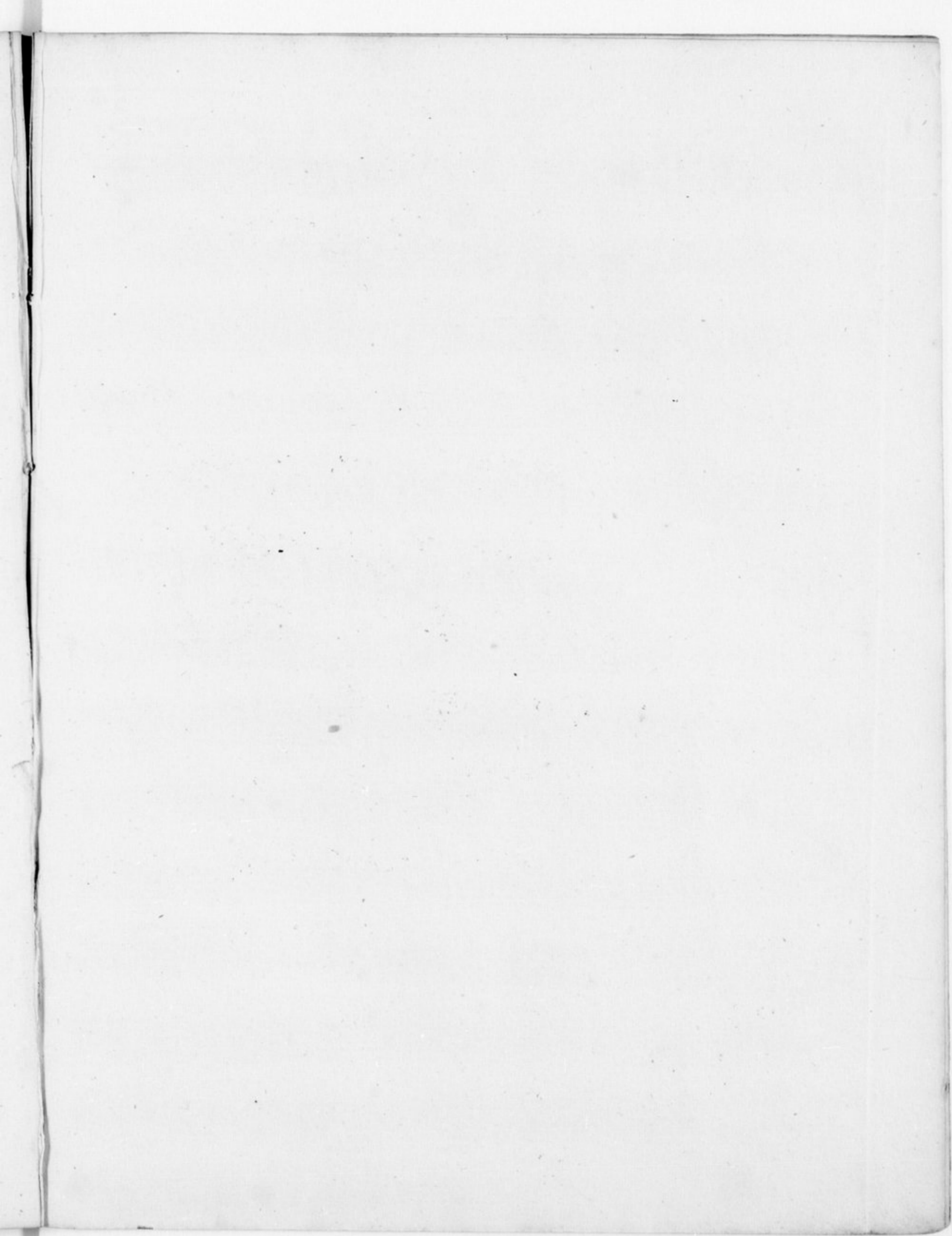
OPERA SETTIMA.

Libro Secondo.

Vm 71682 *A. A. M. S. T. E. R. D. A. M.*

Aux depens D'ETIENNE ROGER, Marchand Libraire.





Musical notation for the first system of the Basso del Concerto Grosso, measures 1-23. The notation is in bass clef with a key signature of one sharp (F#). It features a complex rhythmic pattern with many sixteenth and thirty-second notes. A '4' is written above the staff at measure 4, and a '1' is written above the staff at measure 21. The system ends with a double bar line and a repeat sign.

CONCERTO VIII

Musical notation for the second system of Concerto VIII, measures 24-25. The notation is in bass clef with a key signature of one sharp (F#). It features a complex rhythmic pattern with many sixteenth and thirty-second notes. A '24' is written above the staff at measure 24, and a '1' is written above the staff at measure 25. The system ends with a double bar line and a repeat sign.

Musical notation for the third system of Concerto VIII, measures 26-35. The notation is in bass clef with a key signature of one sharp (F#). It features a complex rhythmic pattern with many sixteenth and thirty-second notes. The system ends with a double bar line and a repeat sign.

Musical notation for the fourth system of Concerto VIII, measures 36-45. The notation is in bass clef with a key signature of one sharp (F#). It features a complex rhythmic pattern with many sixteenth and thirty-second notes. The system ends with a double bar line and a repeat sign.

Musical notation for the fifth system of Concerto VIII, measures 46-55. The notation is in bass clef with a key signature of one sharp (F#). It features a complex rhythmic pattern with many sixteenth and thirty-second notes. The system ends with a double bar line and a repeat sign.

Musical notation for the sixth system of Concerto VIII, measures 56-65. The notation is in bass clef with a key signature of one sharp (F#). It features a complex rhythmic pattern with many sixteenth and thirty-second notes. The system ends with a double bar line and a repeat sign.

Musical notation for the seventh system of Concerto VIII, measures 66-75. The notation is in bass clef with a key signature of one sharp (F#). It features a complex rhythmic pattern with many sixteenth and thirty-second notes. The system ends with a double bar line and a repeat sign.

Musical notation for the eighth system of Concerto VIII, measures 76-85. The notation is in bass clef with a key signature of one sharp (F#). It features a complex rhythmic pattern with many sixteenth and thirty-second notes. The system ends with a double bar line and a repeat sign.

Musical notation for the ninth system of Concerto VIII, measures 86-95. The notation is in bass clef with a key signature of one sharp (F#). It features a complex rhythmic pattern with many sixteenth and thirty-second notes. The system ends with a double bar line and a repeat sign.

Musical notation for the tenth system of Concerto VIII, measures 96-105. The notation is in bass clef with a key signature of one sharp (F#). It features a complex rhythmic pattern with many sixteenth and thirty-second notes. The system ends with a double bar line and a repeat sign.

Musical notation for the eleventh system of Concerto VIII, measures 106-115. The notation is in bass clef with a key signature of one sharp (F#). It features a complex rhythmic pattern with many sixteenth and thirty-second notes. The system ends with a double bar line and a repeat sign.

Musical notation for the twelfth system of Concerto VIII, measures 116-125. The notation is in bass clef with a key signature of one sharp (F#). It features a complex rhythmic pattern with many sixteenth and thirty-second notes. The system ends with a double bar line and a repeat sign.

Musical notation for the thirteenth system of Concerto VIII, measures 126-135. The notation is in bass clef with a key signature of one sharp (F#). It features a complex rhythmic pattern with many sixteenth and thirty-second notes. The system ends with a double bar line and a repeat sign.

Musical notation for the fourteenth system of Concerto VIII, measures 136-145. The notation is in bass clef with a key signature of one sharp (F#). It features a complex rhythmic pattern with many sixteenth and thirty-second notes. The system ends with a double bar line and a repeat sign.

3
Grave

2
Piano Allegro

Piano Forte

1 2

9

Piano

Forte Presto Piano

Piano

CONCERTO IX Allegro

Adagio e Staccato Piano Allegro

Piano Forte Ada. e Pia.

10 Allegro

Basso del Concerto Grosso

First musical staff with a treble clef and a 2-measure fingering mark.

Second musical staff with a 3-measure fingering mark.

Third musical staff with a 2-measure fingering mark.

Fourth musical staff starting with a measure rest of 48 measures.

Fifth musical staff with a 2-measure fingering mark.

Sixth musical staff.

Seventh musical staff with a 5-measure fingering mark.

Eighth musical staff with a 2-measure fingering mark.

Ninth musical staff with a *Adagio* tempo marking.

Tenth musical staff with a 3/4 time signature, *Vivace* tempo marking, and dynamic markings *Piano* and *Forte*.

Eleventh musical staff with dynamic markings *Piano*, *Forte*, and *Piano*.

Twelfth musical staff with a 10-measure fingering mark and dynamic markings *Forte*, *Piano*, and *Forte*.

Thirteenth musical staff with dynamic markings *Piano*, *Forte*, *Piano*, and *Forte*.

Fourteenth musical staff with dynamic markings *Piano*, *Forte*, and *Piano*.

CONCERTO X

6
Andante

9
Piano

Allegro

Piano *Forte*

Piano

Grave

Piano *Allegro*

4 5 4

7 3 2

Piano *Da Capo*

CONCERTO XI

4

Largo

à sei, con quattro Violini obbligati, potendosi raddoppiarle tutte le parti se piace.

Basso del Concerto Grosso

6 25
Allegro

30 31 39 40 60

69 70 79 80 90 99

Piano *Forte*

100 110 119 120 129

24 14 159 160 169 170 179

Piano *Forte* *Volti*

Basso del Concerto Grosso

Grave *Piano Allegro* 5

10 15 20

25 30 35

40 45 50

60

70 75

80 85 86 *Grave* *Piano Presto*

Piano Forte Piano Forte Piano Forte 2

Piano Forte Piano Forte Piano Forte

Piano Adagio Piano Forte

6 2 *Piano* *Piano*

Piano Allegro assai

1

Basso del Concerto Grosso

Musical score for Bassoon, measures 1-10. The score consists of six staves of music. The first five staves contain the main melodic line with various dynamics and articulations. The sixth staff concludes with a *Piano* dynamic marking.

CONCERTO XII

Musical score for Bassoon, measures 11-15. The score consists of five staves of music. The first staff is marked *Grave* and *Piano*. The subsequent staves show a change in tempo and dynamics.

Musical score for Bassoon, measures 16-20. The score consists of two staves of music. The first staff is marked *Presto* and *Piano Forte*. The second staff is marked *Piano*.

Musical score for Bassoon, measures 21-25. The score consists of two staves of music. The first staff is marked *Piano*. The second staff is marked *Piano Forte*.

Musical score for Bassoon, measures 26-30. The score consists of two staves of music. The first staff is marked *Piano*. The second staff is marked *Piano Forte*.

Musical score for Bassoon, measures 31-35. The score consists of two staves of music. The first staff is marked *Piano*. The second staff is marked *Piano Forte*.

Musical score for Bassoon, measures 36-40. The score consists of two staves of music. The first staff is marked *Piano*. The second staff is marked *Piano Forte*.

Musical score for Bassoon, measures 41-45. The score consists of two staves of music. The first staff is marked *Piano*. The second staff is marked *Forte*.

Musical score for Bassoon, measures 46-50. The score consists of two staves of music. The first staff is marked *Piano*. The second staff is marked *Forte*.

Basso del Concerto Grosso

Adagio Piano

Vivace Lunghe

1

18

Piano

1 1 1 1

Lunghe

10

Piano Allegro

2

