

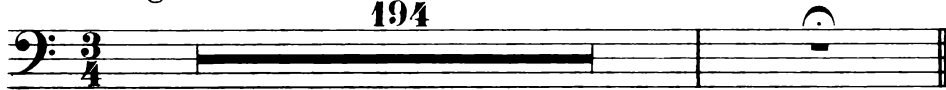
# Dritte Serenade.

## Timpani

### I.

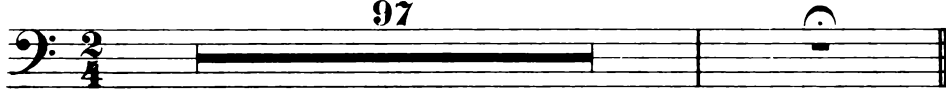
Ignaz Brüll, Op. 67.

Allegro moderato.  
194



### II.

Andante sostenuto.  
97



### III. Alla Marcia.

Allegro vivace.

8 A 2

B 8 Tromba I. 2

C 2 7 D 16

E 5 Fl. Solo. mf

F 3 2

10 G Fl. Solo. 3 H 18

pp pp più pp

# Dritte Serenade.

Triangolo.

I. II. tacet.

III. Alla Marcia.

Ignaz Brüll, Op. 67.

Allegro vivace.

8 A *mf*

B 12 Timp. 13 14 C *mf*

4 D 16 E 17 Viol. I. F *mf*

10 G 2

Timp. 3 H 18 *pp* *ppp*