

Béla Bartók  
Suite No. 2, Op. 4

Bass

I.

Commodo

1



2

Celli

Basso.

Etwas breiter



3

a tempo



4

a tempo

5



6



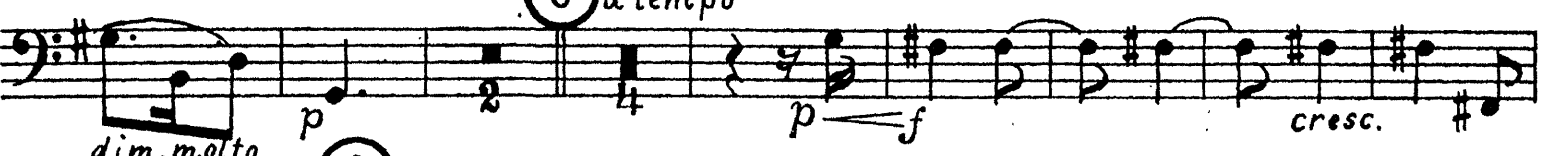
7

a tempo



8

a tempo

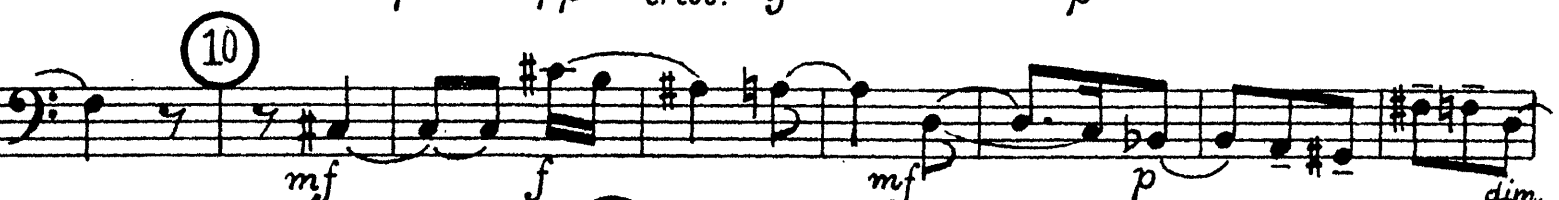


9

poco più vivo



10



11



Kontrabaß

-2- Celli. *p dolce* *espr.* *pp* *f* *ritard.* **12** *Poco meno mosso.* *Basso.*

*pp* *poco rit.* **13** *al tempo*

*f* *pp* *poco rit.* *f*

**14**

*f* *cresc.* **15** **16** Clar. *pp*

**17** *ritard.* *f*

**18** Harfe *poco a poco accel.* *al tempo quièto* *con sord.* *pp*

**19** *pp* *poco rit.* *cresc.* *f* Harfe. *poco accel.* *al tempo*

*a tempo* **20** *molto quièto* *pp* *più quièto* *cresc.*

Kontrabaß

21 *ritard.* *Poco più lento* *ritard.*

II.

*Allegro scherzando.*



11

Kontrabaß

Viola.

12

Musical notation for measures 11 and 12. Measure 11 is for the Kontrabaß (Bass) and measure 12 is for the Viola. The notation includes various time signatures and dynamic markings like *sf*.

13

Viola

Celli.

Musical notation for measures 13 and 14. Measure 13 is for the Viola and measure 14 is for the Celli (Cello). The notation includes dynamic markings like *f*.

14

Celli.

Musical notation for measures 14 and 15. Measure 14 is for the Celli (Cello) and measure 15 is for the Bassi (Bass). The notation includes dynamic markings like *mf* and *f*.

15

Bassi.

Musical notation for measures 15 and 16. Measure 15 is for the Bassi (Bass) and measure 16 is for the Bassi (Bass). The notation includes dynamic markings like *mf* and *f*.

16

Musical notation for measures 16 and 17. Measure 16 is for the Bassi (Bass) and measure 17 is for the Bassi (Bass). The notation includes dynamic markings like *mf pizz.* and *sempre f*.

17

a tempo

Musical notation for measures 17 and 18. Measure 17 is for the Bassi (Bass) and measure 18 is for the Bassi (Bass). The notation includes dynamic markings like *mf pizz.* and *sempre f*.

18

19

20

Musical notation for measures 18, 19, and 20. Measure 18 is for the Bassi (Bass), measure 19 is for the Bassi (Bass), and measure 20 is for the Bassi (Bass). The notation includes dynamic markings like *f* and *p*.

21

22

Musical notation for measures 21 and 22. Measure 21 is for the Bassi (Bass) and measure 22 is for the Bassi (Bass). The notation includes dynamic markings like *crescendo-molto* and *f*.

crescendo-molto f

23

Musical notation for measures 22 and 23. Measure 22 is for the Bassi (Bass) and measure 23 is for the Bassi (Bass). The notation includes dynamic markings like *f*.

Tempo I.

Musical notation for measures 23 and 24. Measure 23 is for the Bassi (Bass) and measure 24 is for the Bassi (Bass). The notation includes dynamic markings like *f*.

Kontrabaß

-6-

25 *a tempo (meno vivo)*

*a tempo (vivo)*

26

27

28

29

30

Kontrabaß

III.

Andante.  
Clap. basso in b

Kontrabaß

agitato molto. accelerando atempo ① accel. rit.

atempo. accel. atempo Bassi. Cello. f f

② Meno Andante. pp mf

Cello atempo ritard. molto f f sempre f

③ poco rit. Molto quièto con sord. f dim. p pp

pp calando

atempo ④

⑤ Fag. poco cresc. Poco più vivo cresc. --- molto ---

atempo ⑥ quièto f pp



Kontrabaß  
Bassi.

Viol. I.  
pp  
senza sord. pp

IV.

Commodo.  
div.

pp

rit. ① atempo

rit. ② atempo

mf pp poco marcato

rit. e calando atempo

pp

poco -- a -- poco -- più --

- agitato -

cresc. sf sf

③ Poco più vivo. pp

④

f

Kontrabaß

5

poco a poco rit. - al 6 Tempo I.

First staff of music, bass clef, common time signature, starting with a circled 5 and ending with a circled 6.

Second staff of music, bass clef, 4/4 time signature, starting with a circled 7 and ending with a circled 8.

Third staff of music, bass clef, 2/4 time signature, starting with a circled 7 and ending with a circled 8.

Fourth staff of music, bass clef, 3/4 time signature, starting with a circled 8 and ending with a circled 9.

Fifth staff of music, bass clef, 2/4 time signature, continuing the sequence.

Sixth staff of music, bass clef, 2/4 time signature, continuing the sequence.

Seventh staff of music, bass clef, 2/4 time signature, starting with a circled 9 and ending with a circled 10.

Eighth staff of music, bass clef, 4/4 time signature, starting with a circled 10 and ending with a circled 11.

Ninth staff of music, bass clef, 2/4 time signature, continuing the sequence.

Tenth staff of music, bass clef, 3/4 time signature, continuing the sequence.

Eleventh staff of music, bass clef, 2/4 time signature, starting with a circled 11 and ending with a circled 12.

Twelfth staff of music, bass clef, 2/4 time signature, continuing the sequence.

Kontrabaß

*Poco ritenuto*

*molto rit.* (12) *Vivo.*

(13)

(14)

*poco rit. al*

(15) *Tempo I.*

*poco meno vivo*

*poco allargando*

*Molto quiëto*

*molto ritard.* *Molto moderato*

*ritard.*

*Adagio.*

*rit.*

*a tempo*

*rit. a tempo*