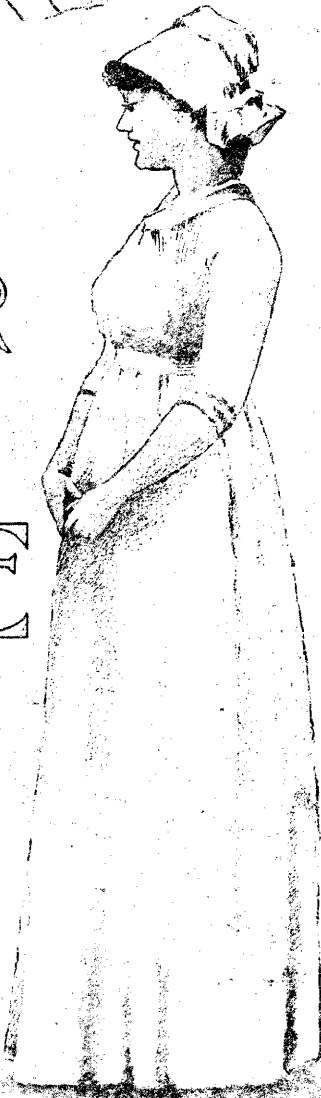


# AN IRISH FOLK-SONG

POEM  
BY  
GILBERT PARKER  
SET TO MUSIC  
BY  
ARTHUR FOOTE



Sop. or Ten. in G min.	Net. .50
Mezzo-Sop. or Bar. in F min.	.50
Alto or Bass in E min.	.50
With Violin Ob. Sop. or Ten. in G min.	.60
With Violin Ob. Mezzo Sop. or Bar.	.60
With Violin Ob. Alto or Bass in E min.	.60
With Violin and Violoncello in E min.	.60
Pianoforte Solo	.50

ARTHUR P. SCHMIDT  
Boston: Leipzig. New York:

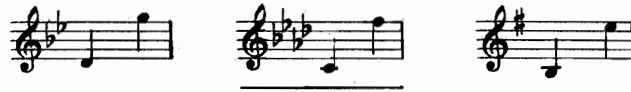
London: Boosey & Co.

To Miss Lilian Carlsmith

# AN IRISH FOLK-SONG

The poem is from  
"Pierre and his people" by  
**GILBERT PARKER**  
(by permission)

ARTHUR FOOTE.



Moderato espressivo ♩=96

You'll wan - der far and wide, dear, but you'll come back a -

gain; You'll come back to your fa - ther and your mo - ther in the

M  
1021  
F 688 I. 2

FRÉDÉRIC

*p* *pp*

glen. Al - though we may be ly - in' 'neath the heath - er gras - ses

Detailed description: This system contains the first two staves of music. The top staff is a vocal line in G major with a key signature of one flat (F major) and a common time signature. It begins with a piano (*p*) dynamic and a crescendo leading to a pianissimo (*pp*) dynamic. The bottom staff is a piano accompaniment with a similar dynamic range. The lyrics are: "glen. Al - though we may be ly - in' 'neath the heath - er gras - ses".

*pp* *rit.* *a tempo*

then, You'll be com - in' back my dar - lin' Ah!

Detailed description: This system contains the next two staves of music. The vocal line starts with a pianissimo (*pp*) dynamic, followed by a ritardando (*rit.*) and then returns to the original tempo (*a tempo*). The piano accompaniment mirrors these dynamics. The lyrics are: "then, You'll be com - in' back my dar - lin' Ah!".

*f* *dimin.*

Detailed description: This system contains the next two staves of music. The vocal line begins with a forte (*f*) dynamic and a diminuendo (*dimin.*). The piano accompaniment also features a forte (*f*) dynamic and a diminuendo. There are no lyrics for this system.

*pp* *rit.*

Detailed description: This system contains the final two staves of music. The vocal line starts with a pianissimo (*pp*) dynamic and a ritardando (*rit.*). The piano accompaniment also features a pianissimo (*pp*) dynamic and a ritardando. There are no lyrics for this system.

*dolce*

You'll hear the wild birds sing-ing — be - neath a bright - er

*p*

*cresc.*

sky; The roof tree of your house, dear, it

*cresc.*

*f*

*p*

will be broad and high; But you'll hun - ger for the

*p*

*pp*

hearth - stone, where, a child, you used to lie, — You'll be

*ppp*

*ppp*

*sotto voce*

com - in' back, my dar - lin'.

Ah!

*pp una corda*

*Seo.*

*una corda al fine*

*pp*

You'll be com - in' back, my dar - lin'!

*pp*