

291

DIE STADT.

LIED

aus

Fr. Schubert's Schwanengesang.

für das **Piano-Forte** übertragen

VON

R. WRSZK.

Eigenthum des Verlegers.

Nº 1.

Nº 7751.

Eingetragen in



das Verbins-Archiv.

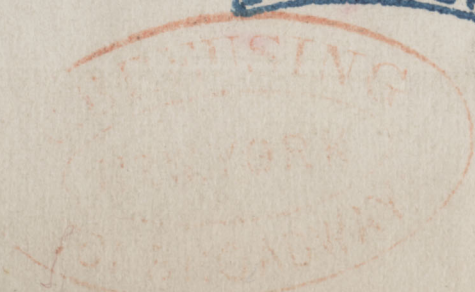
Preis 45 C.M.
12 gr

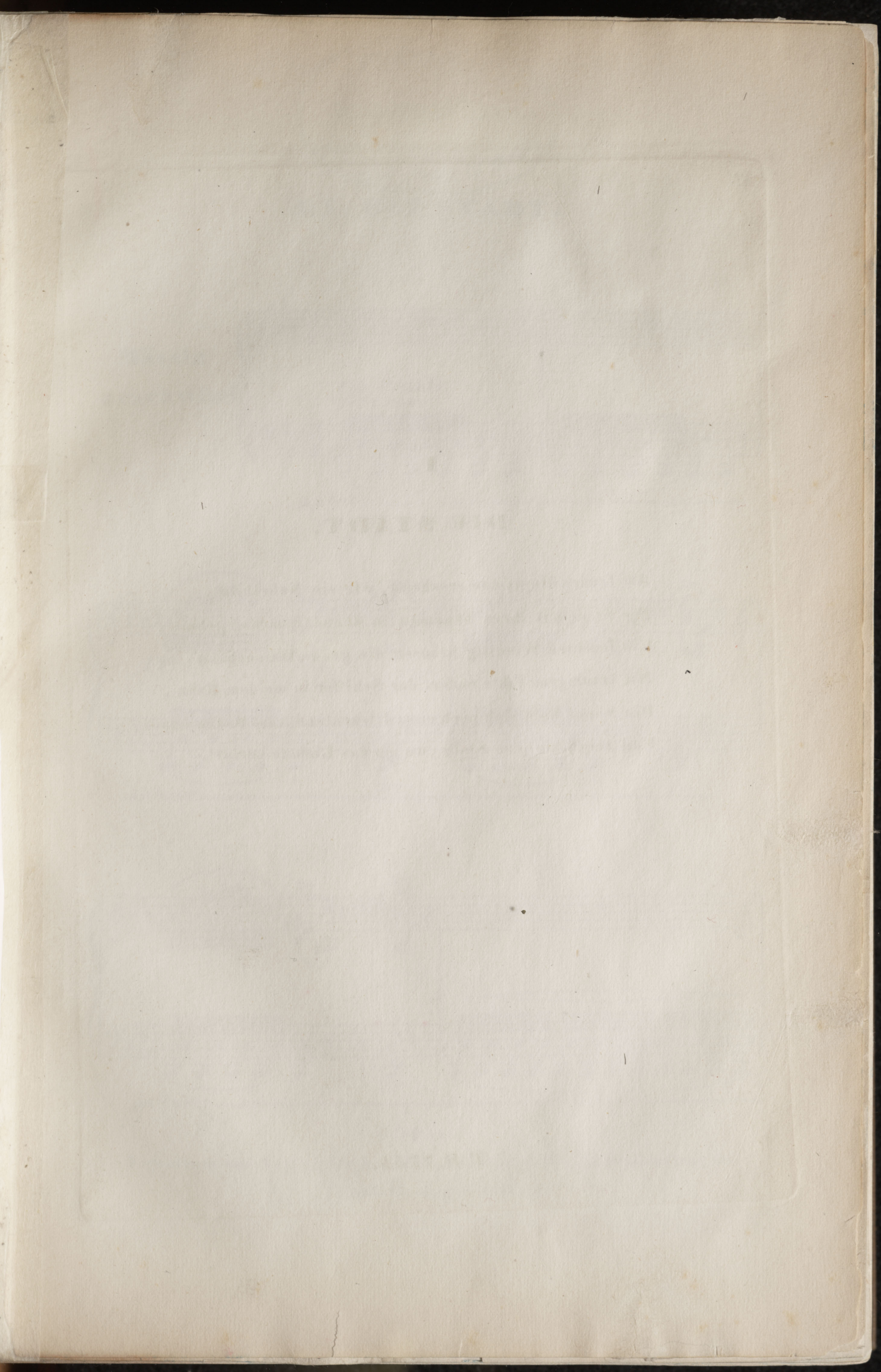
Wien, bei Tobias Haslinger,
k.k. Hof- u. priv. Kunst- u. Musikalienhändler,
am Graben Nº 618.

Paris, bei Schlesinger.

G. SCHIRM
SUCCESSOR

London, bei Cooks & Co.





1.

DIE STADT.

Am fernen Horizonte erscheint, wie ein Nebelbild,
Die Stadt mit ihren Thürmen, in Abenddämmerung gehüllt.
Ein feuchter Windzug kräuselt die graue Wasserbahn;
Mit traurigem Takte rudert der Schiffer in meinem Kahn.
Die Sonne hebt sich noch einmal leuchtend vom Boden empor,
Und zeigt mir jene Stelle, wo ich das Liebste verlor.



N^o. 1. DIE STADT.

Mässig
geschwind.

*con Pedale
sotto voce*

ga basso

pp

ga basso

ga basso

(7751)

Eigenthum und Verlag der k.k. Hof-Kunst- und Musikalienhandlung des
Tobias Haslinger in Wien.

(leise deklamirt)

mf * die Begleitung immer *p* und *stacc* :

ga

rall:

(den Takt immer sehr markiren)

pp

p

ga

Piano à 6 Octaves

den Gesang *mf* *ten:*

ga *loco*

Piano a 6 Octaves

ten:

This system contains the first system of music. It features a grand staff with three staves. The top staff has a treble clef and contains a melodic line with slurs and accents. The middle staff has a bass clef and contains a bass line with slurs and accents. The bottom staff has a bass clef and contains a piano accompaniment with slurs and accents. The text 'den Gesang' is written above the top staff, 'mf' and 'ten:' are below it. 'ga' and 'loco' are written below the middle staff. 'Piano a 6 Octaves' is written below the bottom staff. 'ten:' is written below the middle staff.

sempre con Ped:

ten:

This system contains the second system of music. It features a grand staff with three staves. The top staff has a treble clef and contains a melodic line with slurs and accents. The middle staff has a bass clef and contains a bass line with slurs and accents. The bottom staff has a bass clef and contains a piano accompaniment with slurs and accents. The text 'sempre con Ped:' is written above the top staff. 'ten:' is written below the middle staff.

ga *loco*

poco a poco cresc:

ten:

This system contains the third system of music. It features a grand staff with three staves. The top staff has a treble clef and contains a melodic line with slurs and accents. The middle staff has a bass clef and contains a bass line with slurs and accents. The bottom staff has a bass clef and contains a piano accompaniment with slurs and accents. The text 'ga' and 'loco' are written above the top staff. 'poco a poco cresc:' is written below the top staff. 'ten:' is written below the middle staff.

8a..... loco

8a..... loco

molto rinforz :

This system contains two measures of music. The first measure is marked '8a..... loco' and features a treble clef with a complex, rapid melodic line and a bass clef with a supporting accompaniment. The second measure is also marked '8a..... loco' and includes the instruction 'molto rinforz :'. It continues the melodic and accompanimental lines from the first measure.

8a..... loco

trem :

This system contains two measures of music. The first measure is marked '8a..... loco' and features a treble clef with a complex, rapid melodic line and a bass clef with a supporting accompaniment. The second measure is marked 'trem :'. It continues the melodic and accompanimental lines from the first measure.

accelerando

fff

Piano à 6 Oct:

This system contains two measures of music. The first measure is marked 'accelerando' and features a treble clef with a complex, rapid melodic line and a bass clef with a supporting accompaniment. The second measure is marked 'fff' and includes the instruction 'Piano à 6 Oct:'. It continues the melodic and accompanimental lines from the first measure.

precipitato

precipitato
8a.....loco

molto ener = gico e deciso
(den Takt immer sehr markiren)*

Ossia più facile.

molto ener = gico e deciso

8a.....loco
4 3 2 1 1 3 2 1 1

Ossia più facile.

8^a..... loco

Ossia più facile

This system contains two systems of music. The top system has a treble staff with a melodic line and an alto/bass staff with a more rhythmic accompaniment. The bottom system is a simplified version of the same piece, with fewer notes and some fingerings indicated (1, 2, 4). Both systems include dynamic markings like *ff* and *f*, and various articulation symbols like asterisks and circles.

il più Presto possibile

8^a..... loco

fff

molto rinforz :

This system is characterized by a very fast, dense melodic line in the treble staff, marked with *fff* and *molto rinforz*. The bass staff provides a steady accompaniment. The notation is highly detailed, with many notes and slurs.

Ossia più facile

fff

8^a..... loco

This system is a simplified version of the second system, with a more manageable melodic line in the treble staff. It includes the same dynamic markings and articulation symbols as the previous system.

gabasso

sempre più dim:

8a

8a