

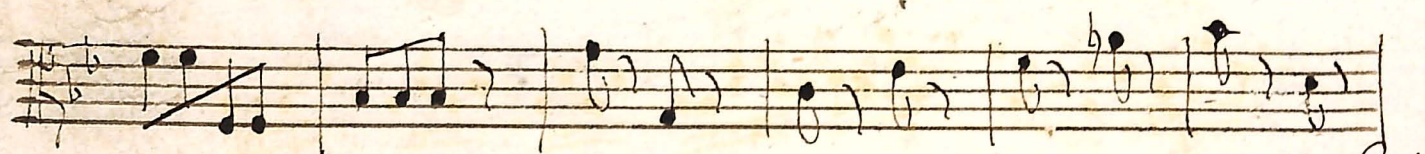
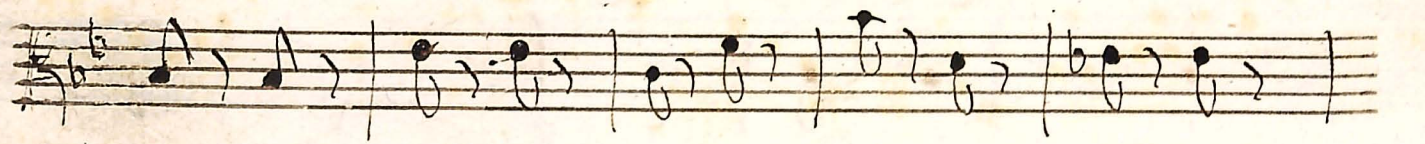
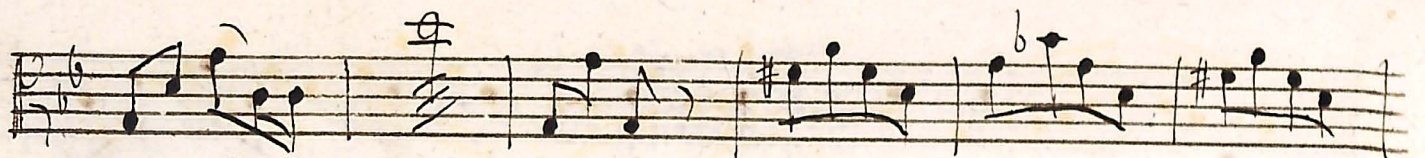
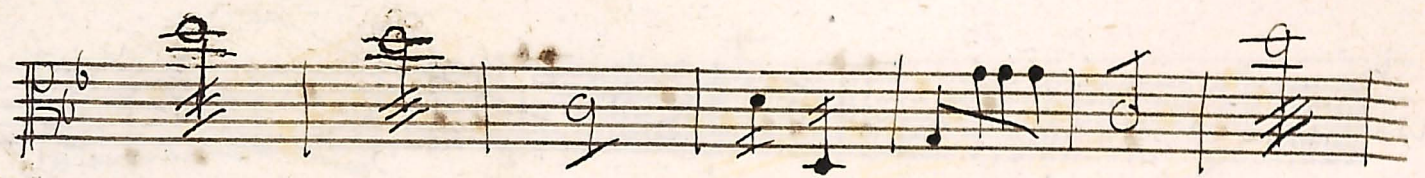
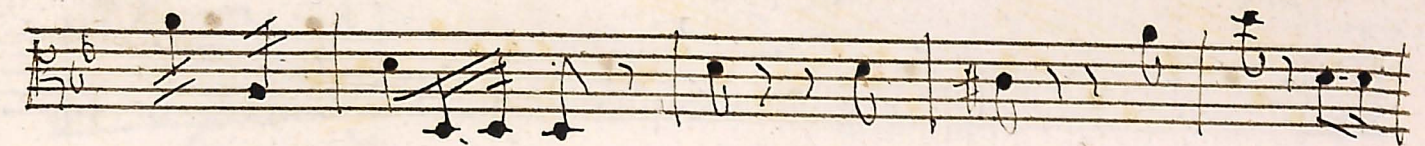
Laudate Fueros. a 3. del sig. Barbieri.

Viola, seconda.

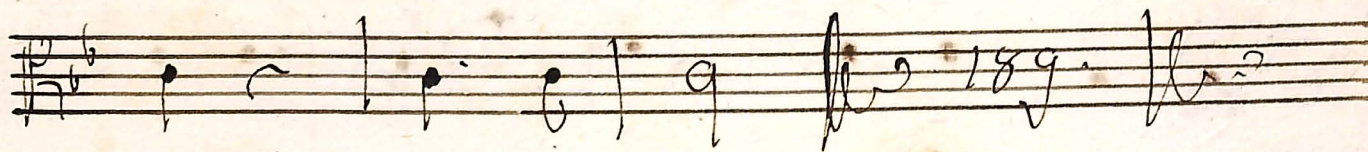
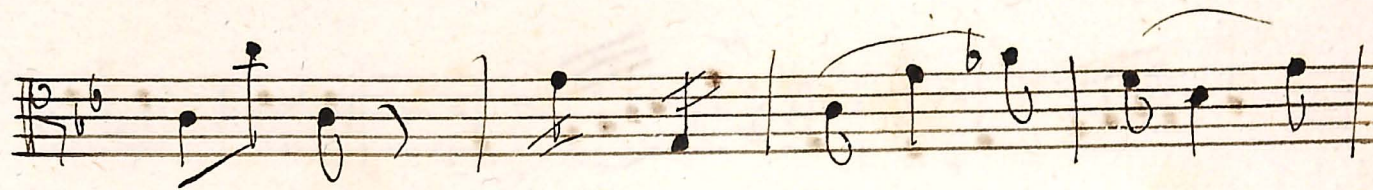
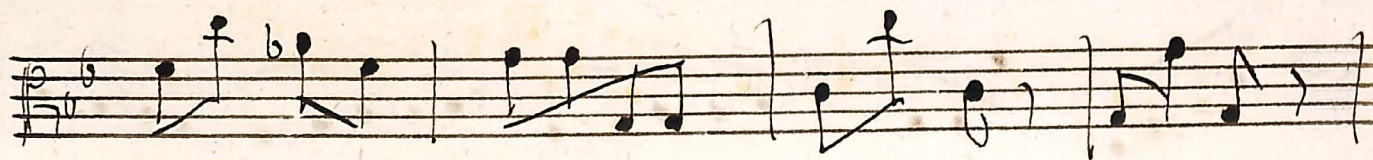
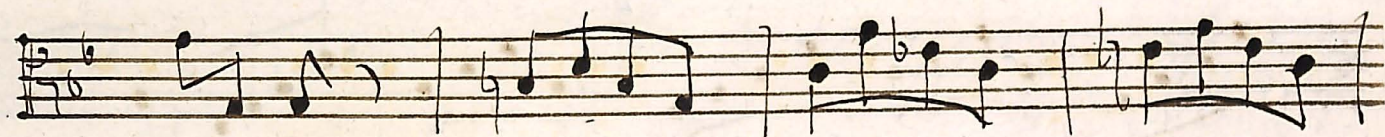
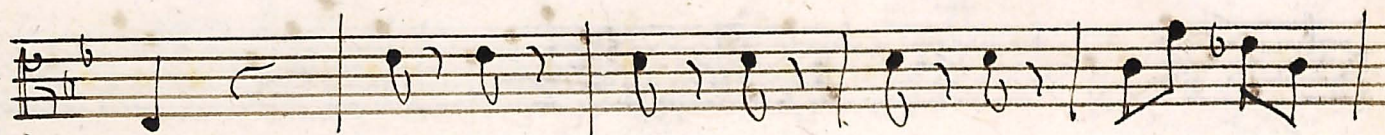
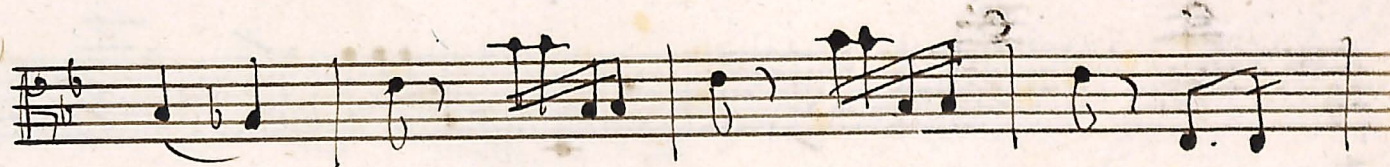
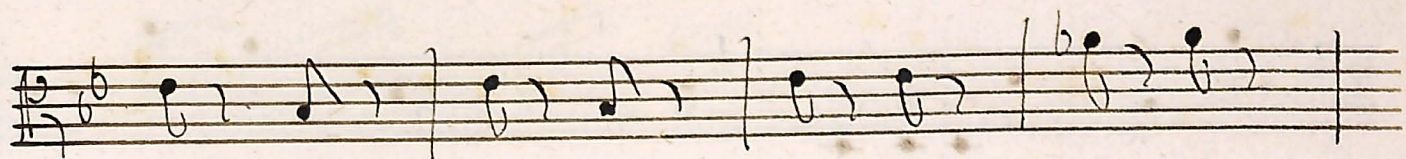
The image shows a handwritten musical score for Viola, seconda, consisting of ten staves of music. The score is written in a single system with ten staves. The first staff begins with the tempo marking 'And. sosten.' and a dynamic marking 'p'. The music is in 3/4 time and features a variety of rhythmic patterns, including eighth and sixteenth notes, and rests. There are several dynamic markings throughout, including 'p', 'mf', 'f', and 'pp'. The notation includes slurs, accents, and other performance instructions. The score concludes with a double bar line and a fermata.

14/17

Volte



Voltri
2



veque

Gloria.

And: più sosten: *f*

Handwritten musical notation on a five-line staff. It begins with a treble clef, a key signature of two flats (B-flat and E-flat), and a time signature of 2/4. The notation includes a series of eighth and quarter notes, some with slurs and accents. A handwritten *f* (forte) is written above the staff.

Handwritten musical notation on a five-line staff, continuing the piece with various rhythmic values and slurs.

Handwritten musical notation on a five-line staff, featuring eighth notes and slurs.

Handwritten musical notation on a five-line staff, including a large slur over a group of notes.

Handwritten musical notation on a five-line staff, showing a sequence of eighth notes.

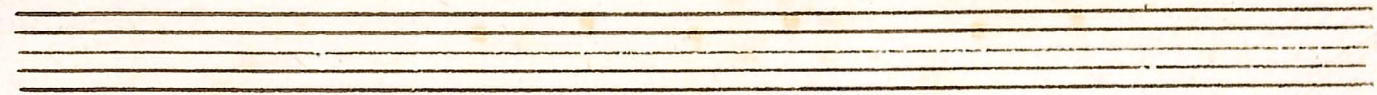
Handwritten musical notation on a five-line staff, continuing the melodic line.

Handwritten musical notation on a five-line staff, featuring a change in key signature to three flats (B-flat, E-flat, and A-flat).

Handwritten musical notation on a five-line staff. It includes dynamic markings *pp* (pianissimo) and *pmo* (piano molto). The notation consists of quarter and eighth notes.

Handwritten musical notation on a five-line staff, showing a steady melodic progression.

Handwritten musical notation on a five-line staff, ending with a key signature change to three flats and the word *Volta* written at the end of the line.



Canon Deo.

