

SIX
SONATAS

for two

VOLONCELLOS

and two

VOLINNS

with a Thorough Bass for the

HARPSICORD

Compos'd By

Sig.^r Nicolo Porpora

and

Sig.^r Gio. Batta Costanza.

LONDON. Printed for I. WALSH, in Catharine Street, in the Strand, of whom may be had,

Lanzetti's 12 Solos for 2 violoncellos
Galliard's Solos for 2 Violoncellos

II

Marcello's Solos for 2 Violoncellos
Handel's Bass Songs

VIOLINO 1^{mo}

SONATA I

Allegro

6

10

17

2

2

4

3

p

p⁰

VIOLINO

110

Tempo Giusto

Allegro

SONATA
II

Affettuoso

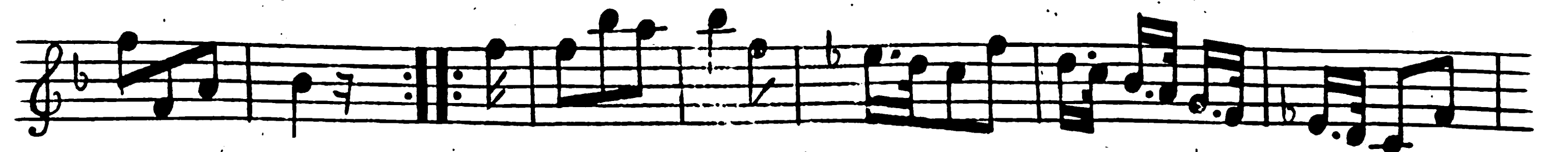
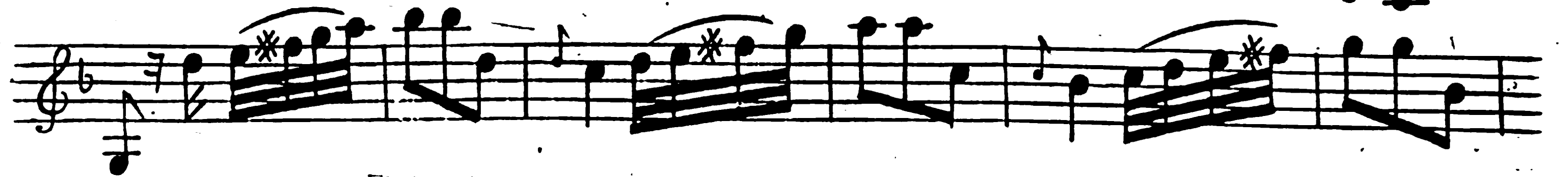
The first section of the sonata is written in treble clef with a key signature of one flat (B-flat) and a 4/4 time signature. It begins with a 3-measure rest, followed by a series of eighth and sixteenth notes. The music features several trills (tr) and a 4-measure rest. The section concludes with a 3-measure rest and a double bar line.

Allegro

The second section of the sonata is written in treble clef with a key signature of one flat (B-flat) and a common time signature (C). It begins with a series of eighth and sixteenth notes, followed by a 3-measure rest and a trill (tr). The music includes a 4-measure rest and a 3-measure rest. The section concludes with a 4-measure rest and a double bar line.

VIOLINO

ind



Violino

SONATA III

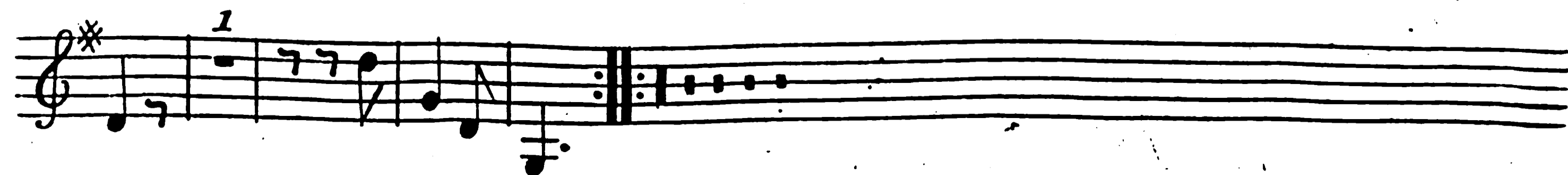
Adagio

Allegro

Violino



Adagio Staccato



VIOLINO

SONATA IV *Adg. e Staccato*

Allegro

VIOLINO

SONATA V

Adagio

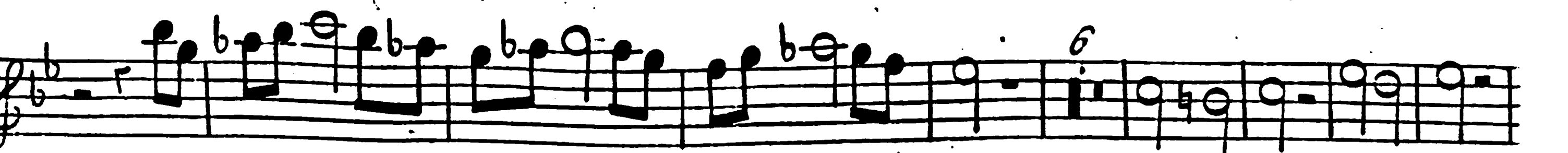
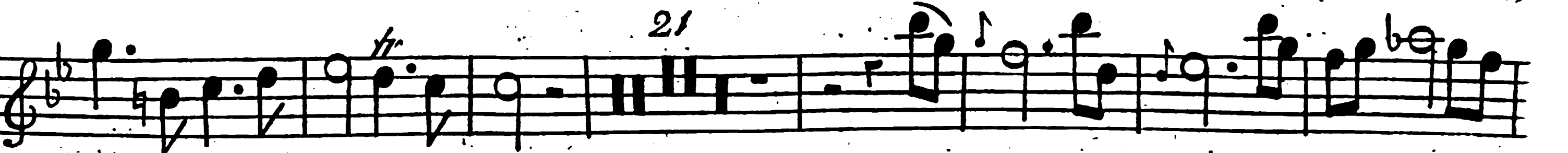
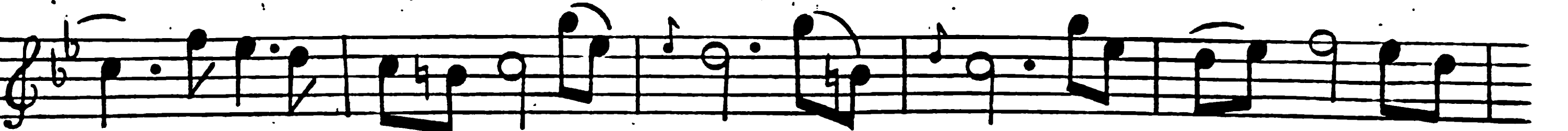
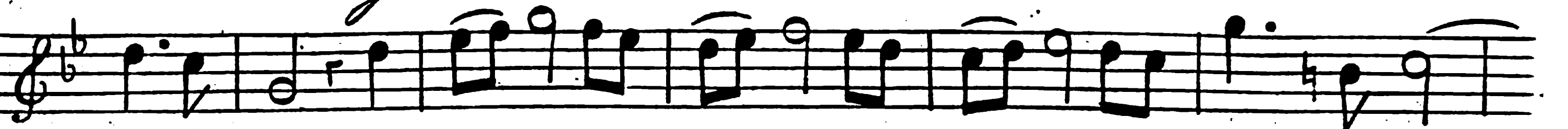
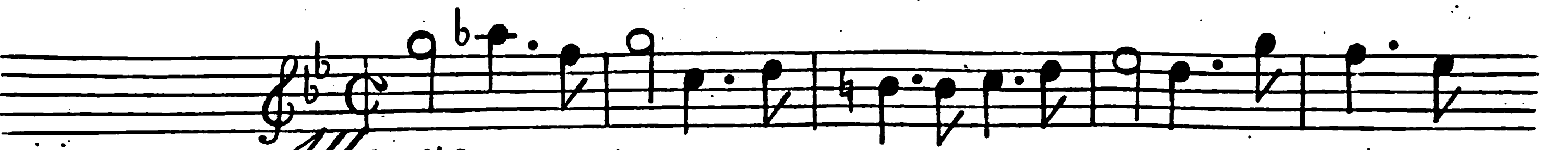
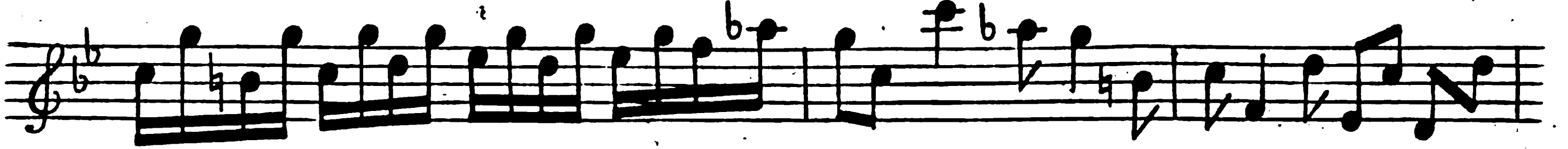
Musical notation for the Adagio section of Sonata V, measures 1-12. The score is written on five staves in G major (one flat) and 12/8 time. It features a melodic line with various ornaments and a bass line with rhythmic accompaniment. Measure numbers 5, 7, and 10 are indicated above the staves.

Allegro

Musical notation for the Allegro section of Sonata V, measures 13-24. The score is written on five staves in G major (one flat) and common time (C). It features a more rhythmic and technically demanding melodic line with frequent sixteenth notes and trills. Measure numbers 3, 4, 7, 10, and 11 are indicated above the staves.

VIOLINO

2120



Violino

SONATA VI

Adagio

Musical notation for the first system of the Adagio section, measures 1-8. The music is in G major (one sharp) and common time (C). It features a melodic line with various ornaments and trills, and a bass line with a steady eighth-note accompaniment.

Musical notation for the second system of the Adagio section, measures 9-16. The tempo remains Adagio. The melodic line continues with grace notes and trills, while the bass line maintains its rhythmic pattern.

Musical notation for the third system of the Adagio section, measures 17-24. The tempo remains Adagio. The melodic line features a trill and a grace note, and the bass line continues with eighth notes.

Musical notation for the fourth system of the Adagio section, measures 25-32. The tempo remains Adagio. The melodic line includes a trill and a grace note, and the bass line continues with eighth notes.

Musical notation for the fifth system of the Adagio section, measures 33-40. The tempo remains Adagio. The melodic line includes a trill and a grace note, and the bass line continues with eighth notes.

Musical notation for the sixth system of the Adagio section, measures 41-48. The tempo remains Adagio. The melodic line includes a trill and a grace note, and the bass line continues with eighth notes.

Allegro

Musical notation for the first system of the Allegro section, measures 1-8. The tempo changes to Allegro. The music is in G major and 3/4 time. It features a melodic line with grace notes and a bass line with a steady eighth-note accompaniment.

Musical notation for the second system of the Allegro section, measures 9-16. The tempo remains Allegro. The melodic line continues with grace notes and trills, and the bass line maintains its rhythmic pattern.

Musical notation for the third system of the Allegro section, measures 17-24. The tempo remains Allegro. The melodic line continues with grace notes and trills, and the bass line maintains its rhythmic pattern.

Musical notation for the fourth system of the Allegro section, measures 25-32. The tempo remains Allegro. The melodic line continues with grace notes and trills, and the bass line maintains its rhythmic pattern.

Musical notation for the fifth system of the Allegro section, measures 33-40. The tempo remains Allegro. The melodic line continues with grace notes and trills, and the bass line maintains its rhythmic pattern.

Violino Tacet

Allegro Staccato