

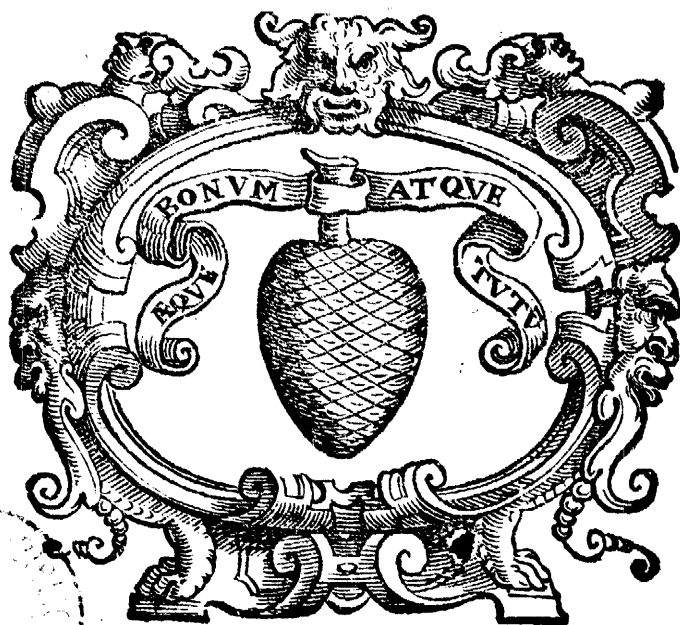
ALTO
C A N Z O N
DI DIVERSI
P E R S O N A R

CON OGNI SORTE DI STROMENTI
A Quatro Cinque , & Sei Voci.

Nouamente Stampate .

L I B R O P R I M O .

CON PRIVILEGIO.



In Venetia , Presso Giacomo Vincenzi .

M D L X X V I I I .



AL MOLTO MAGNIFICO
SIGNOR PIETRO
ANTONIO DIEDO

Signor, & Patron mio offeruandissimo.



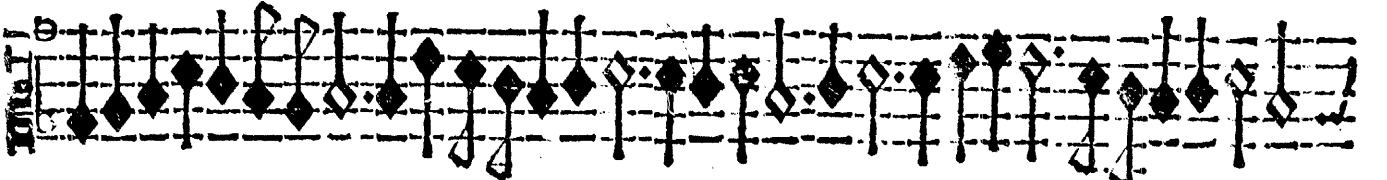
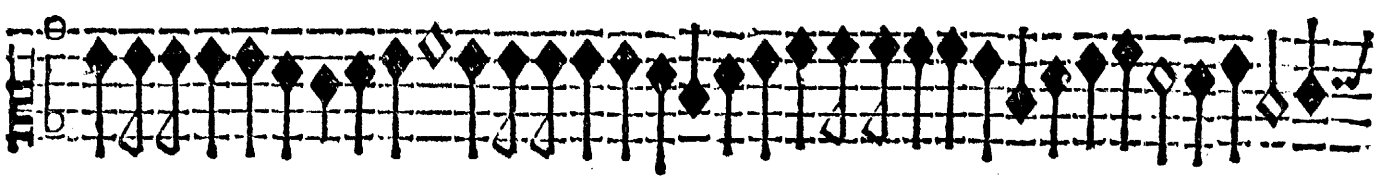
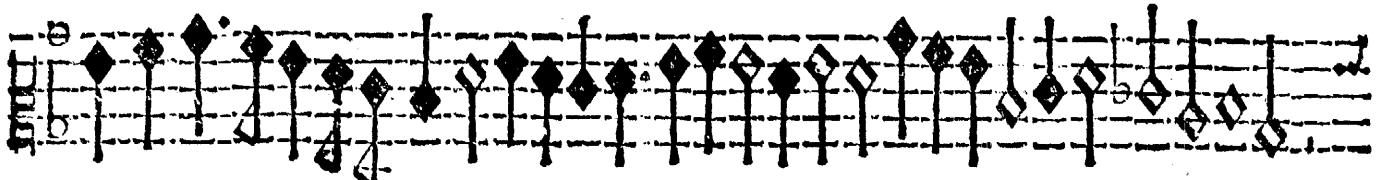
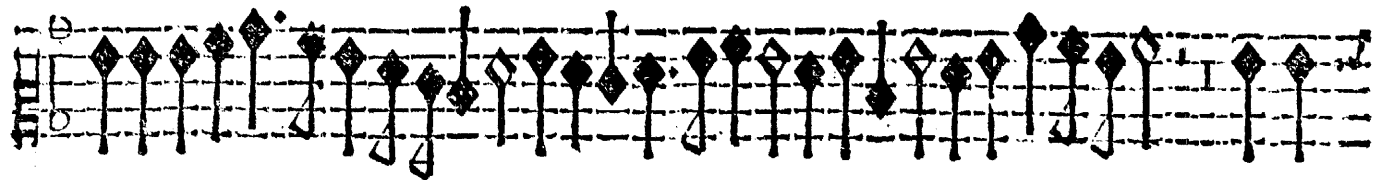
RA da molti virtuosi grandemente desiderata alcuna scelta di Canzoni Francesce per sonare, ond'io hauendone raccolto sino à quattro volumi di Autori diuersi, à quattro, cinque, sei, sette, & otto voci, mi son risoluto, co'l mezo della mia Stampa, farne partecipe cadauno, Inuiando questo Primo libro sotto il nome di V. S. molto Magnifica conoscendola vaga di sì honorato trattenimento, & vera protettrice di professori di quella, come chiaramente si vede nel suo honoratissimo ridotto fornito di perfettissimi stromenti, & frequentato da valenti Musici, & sonatori eccellentissimi oue si godono, & nobilissimi & suauissimi concerti. Per ciò non si sdegni V. S. gradir questo picciol dono, accompagnato da la molta affettione, che le porto, & conseruarmiper suo, si come le sono, & le bacio le mani.

Di Venetia li 20. Decembre 1587.

Di V. S. Molto Magnifica.

Seruitore affectionatissimo

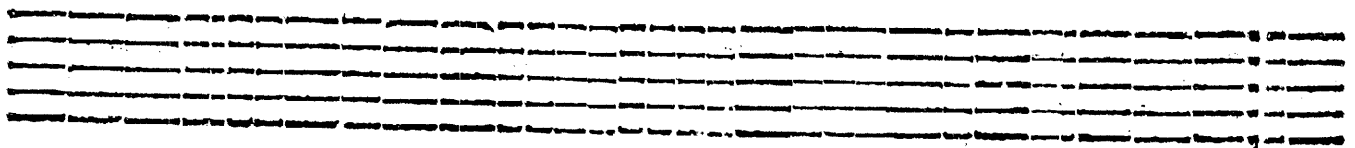
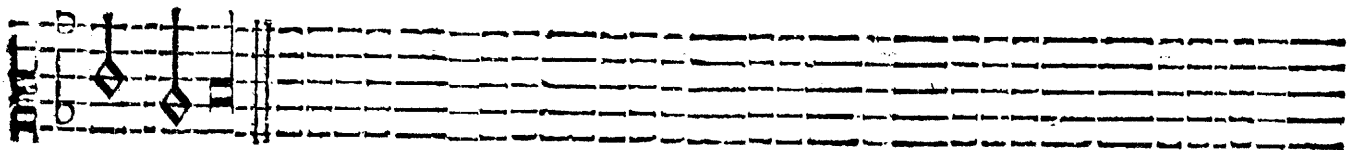
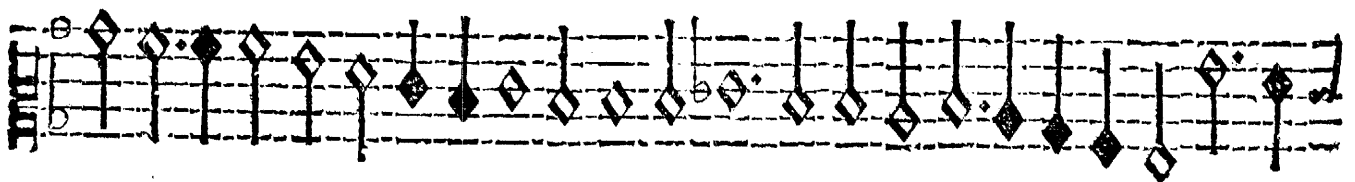
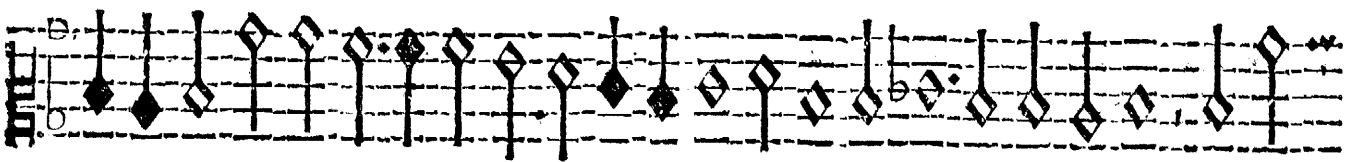
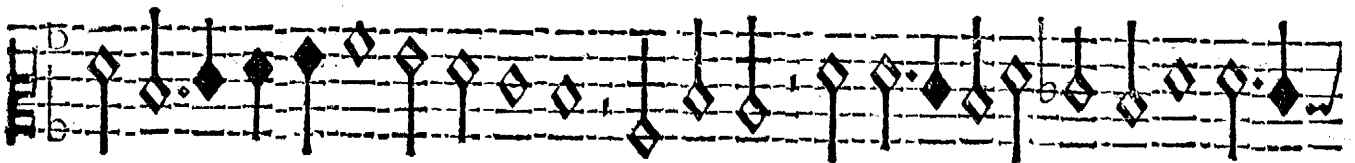
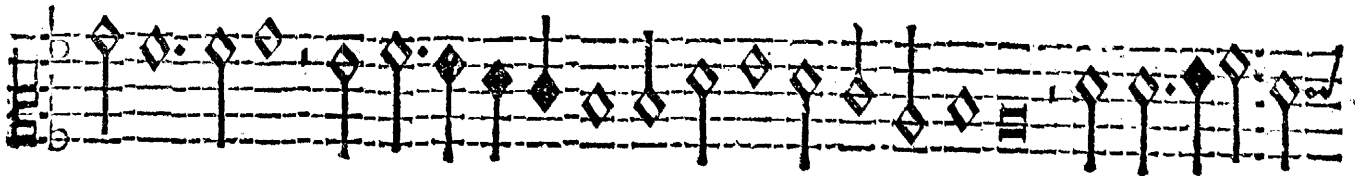
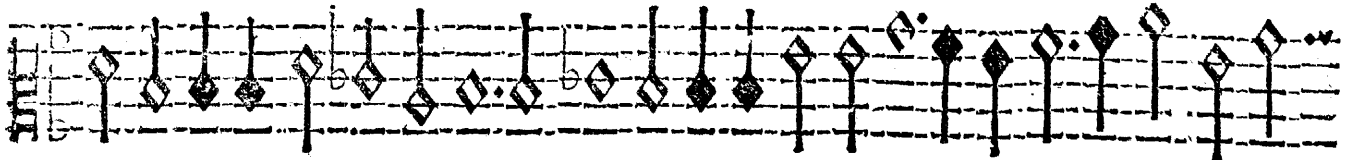
Iacomo Vincenci



Claudio da Coreggio. A 4.

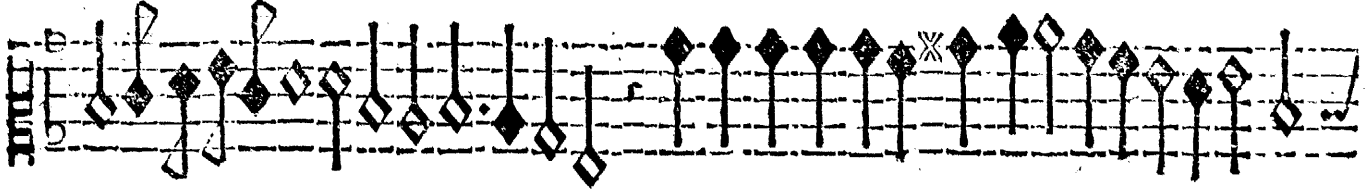
2

ALTO



Giosefo Guami. A 4



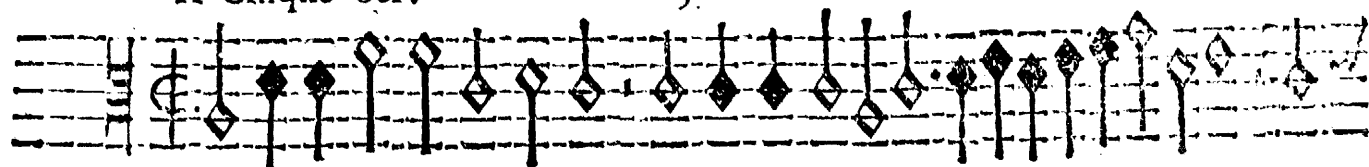


This image shows a musical score for an Alto part, consisting of ten staves of music. The notation is written on a five-line staff with a treble clef and a key signature of one flat (B-flat). The time signature is 4/4. The music is characterized by a rhythmic pattern of eighth and sixteenth notes, often beamed together. The first staff begins with a treble clef, a key signature of one flat, and a 4/4 time signature. The notation includes various note values, rests, and dynamic markings such as 'p' (piano) and 'f' (forte). The piece concludes with a double bar line and repeat dots at the end of the tenth staff.

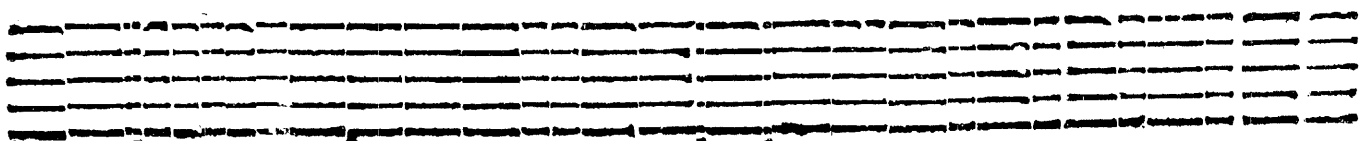
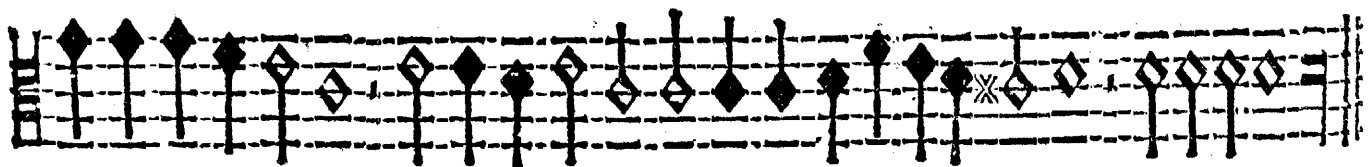
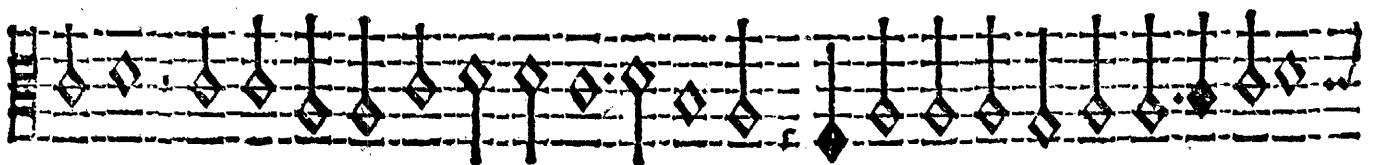
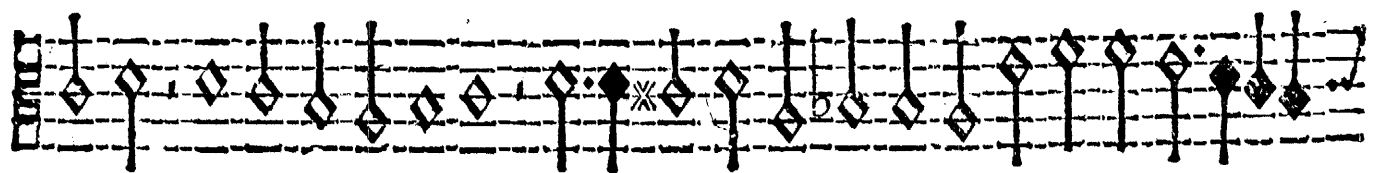
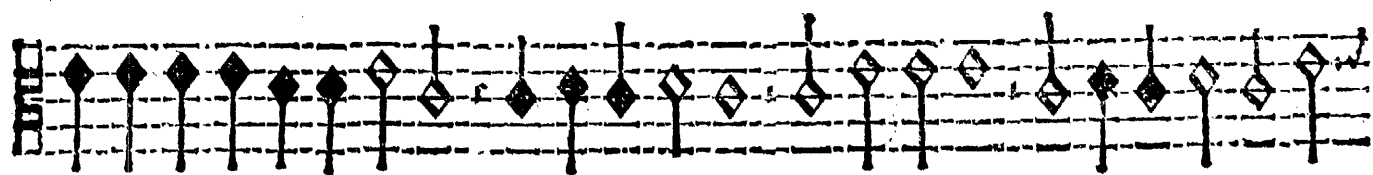
A Cinque voci.

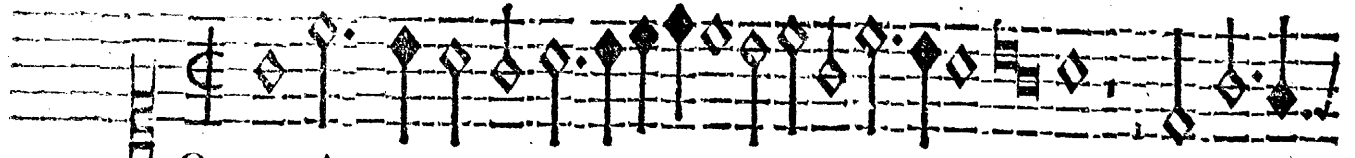
5.

ALTO

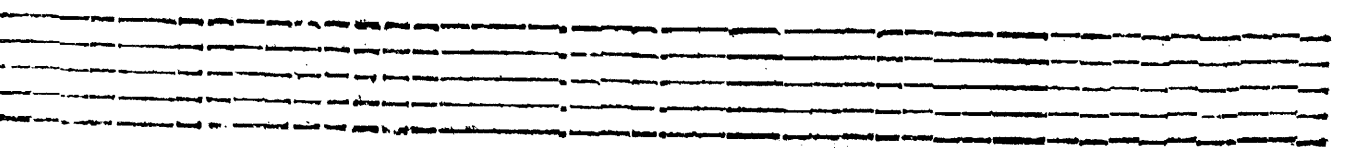
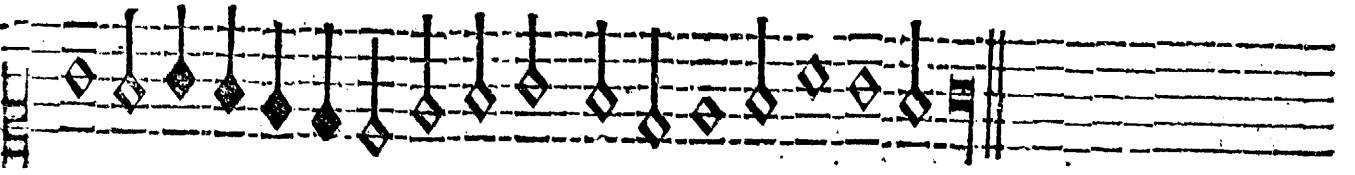
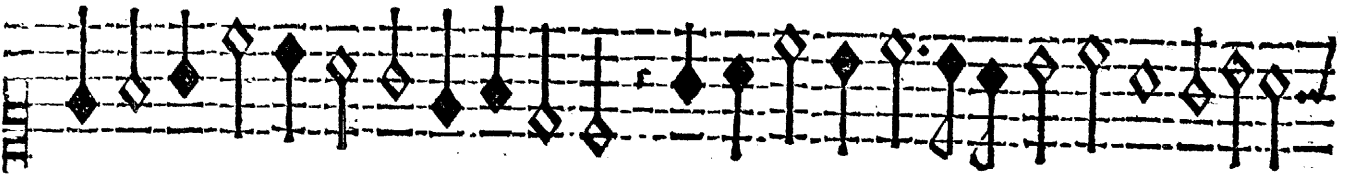
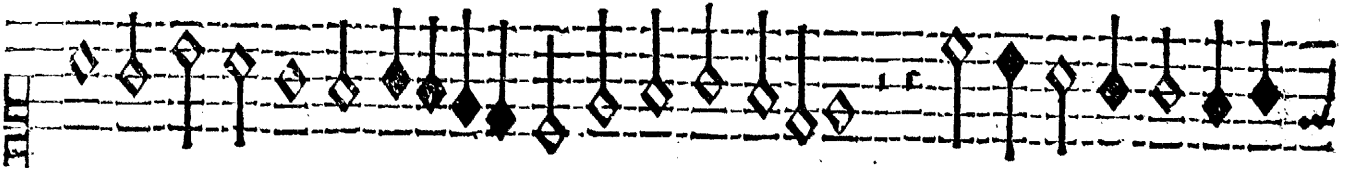
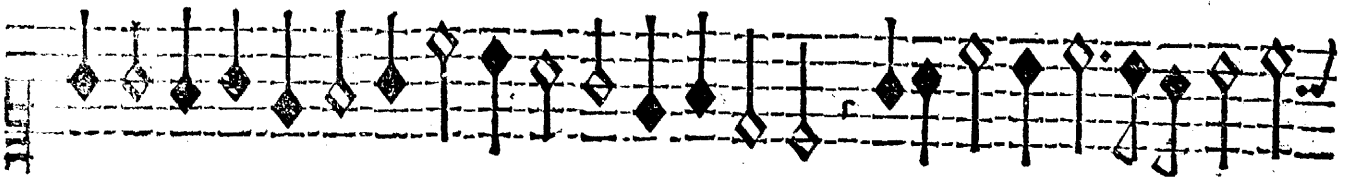
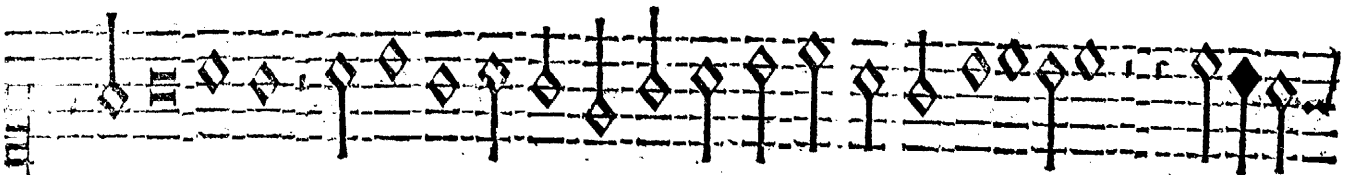
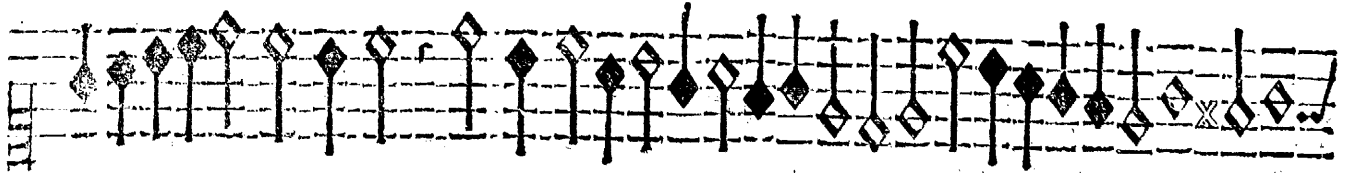


Las uoules.





On ques Amor.



A Cinq Voc.

7

ALTO

The first musical staff for the Alto part, starting with a treble clef, a key signature of one flat (B-flat), and a common time signature (C). It contains a sequence of notes, including a whole note followed by several quarter notes.

Viver ne puis.

The second musical staff, continuing the melodic line with a series of quarter notes.

The third musical staff, continuing the melodic line with a series of quarter notes.

The fourth musical staff, continuing the melodic line with a series of quarter notes.

The fifth musical staff, continuing the melodic line with a series of quarter notes.

The sixth musical staff, continuing the melodic line with a series of quarter notes.

The seventh musical staff, continuing the melodic line with a series of quarter notes.

The eighth musical staff, continuing the melodic line with a series of quarter notes.

The ninth musical staff, ending with a double bar line and a repeat sign.

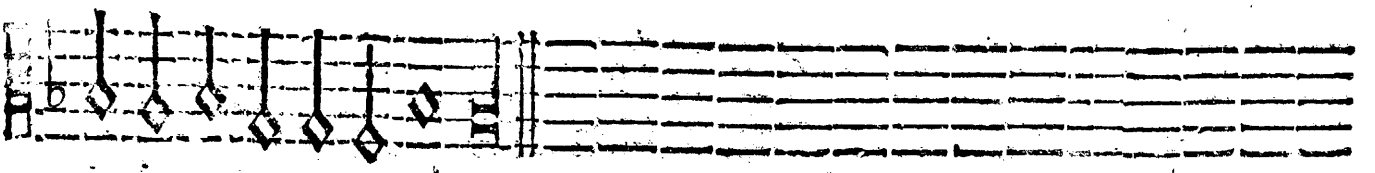
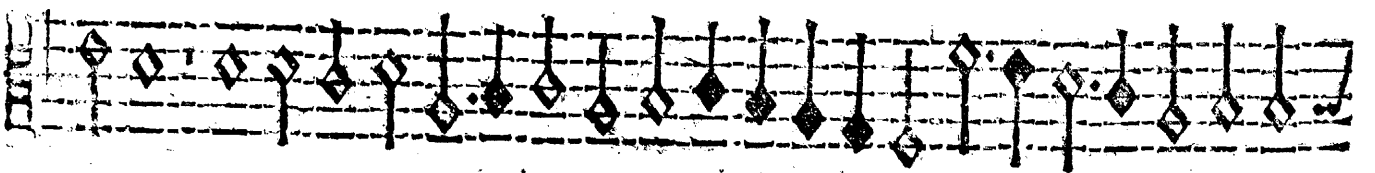
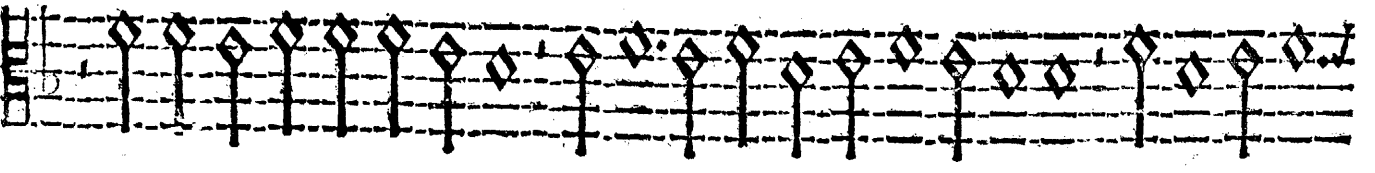
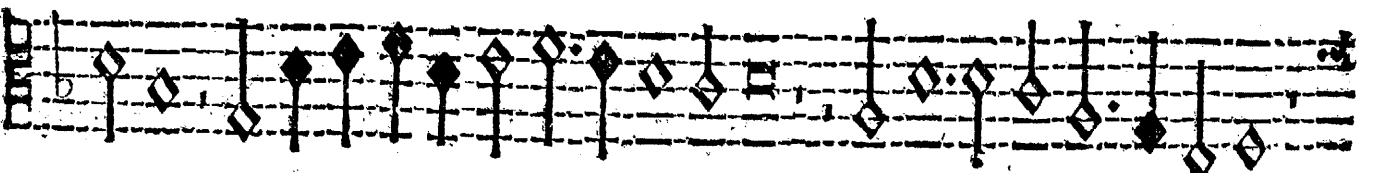
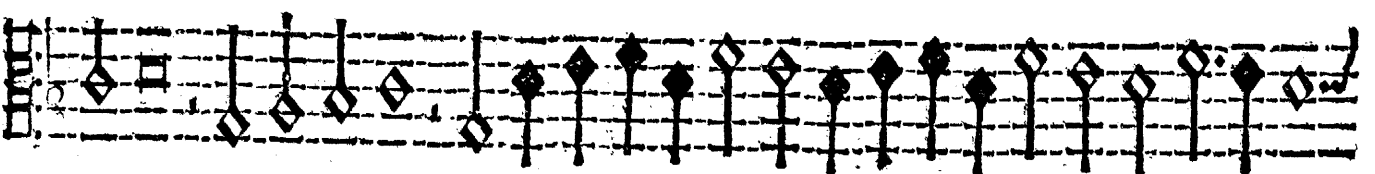
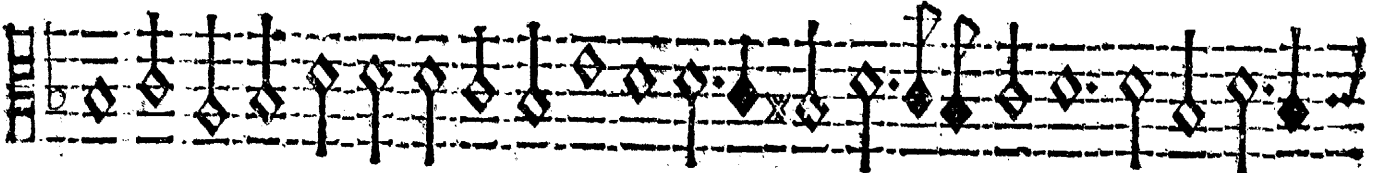
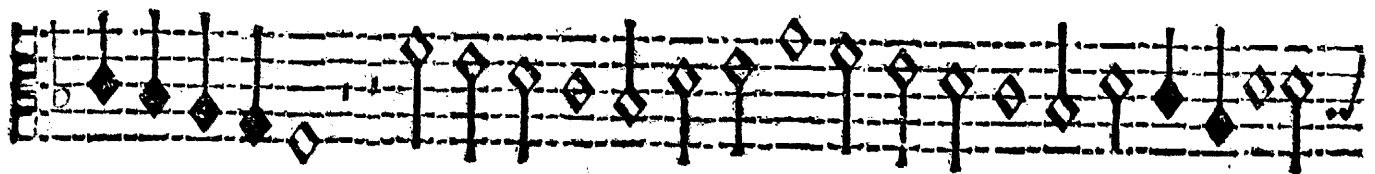
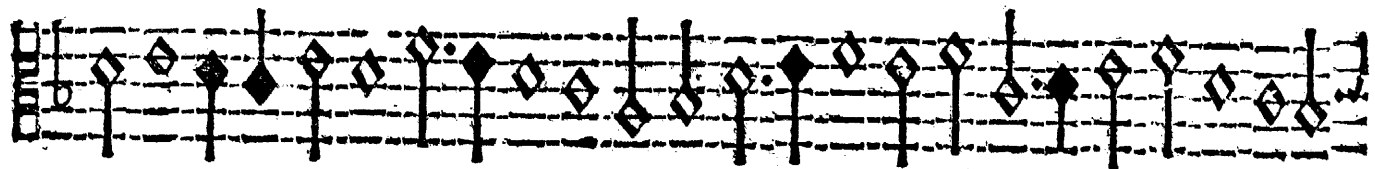
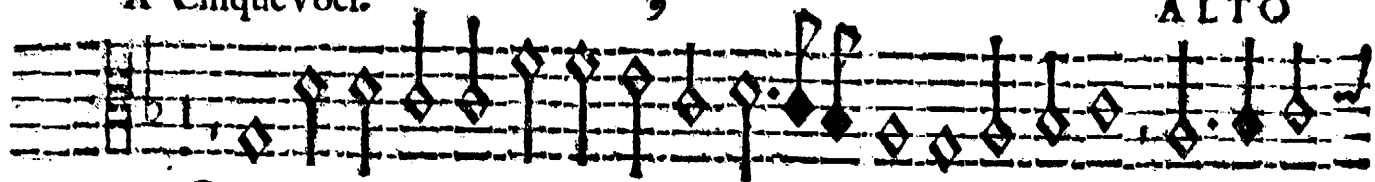
A Cinque Voci.

ALTO

Io uifans.

A CinqueVoci.

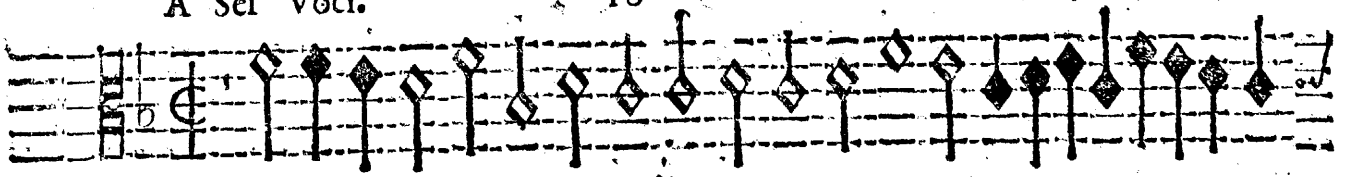
ALTO



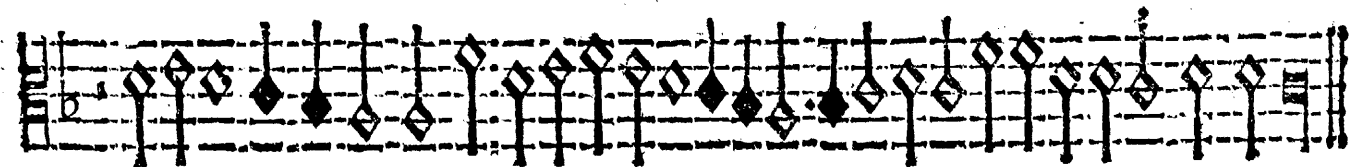
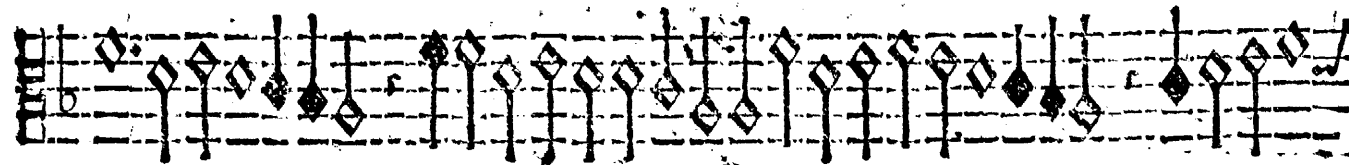
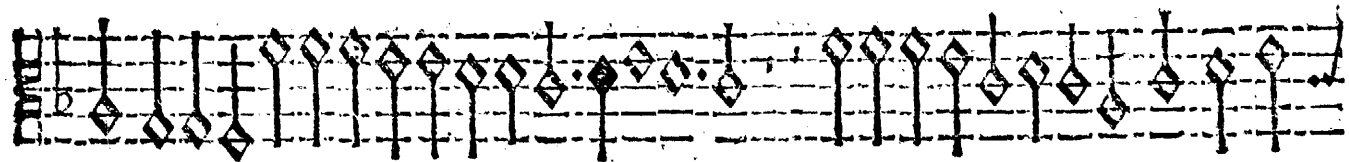
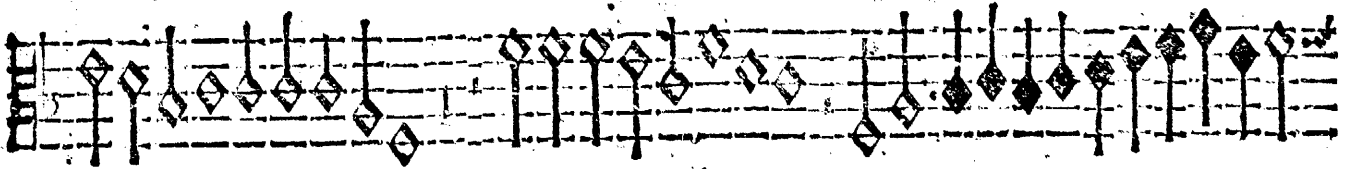
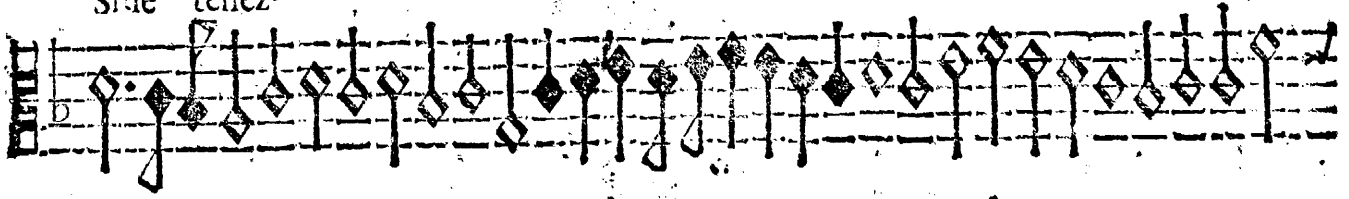
A Sei Voci.

10

ALTO



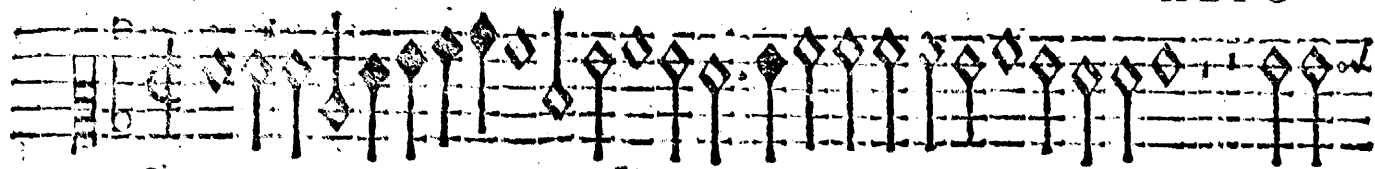
Sine tenez



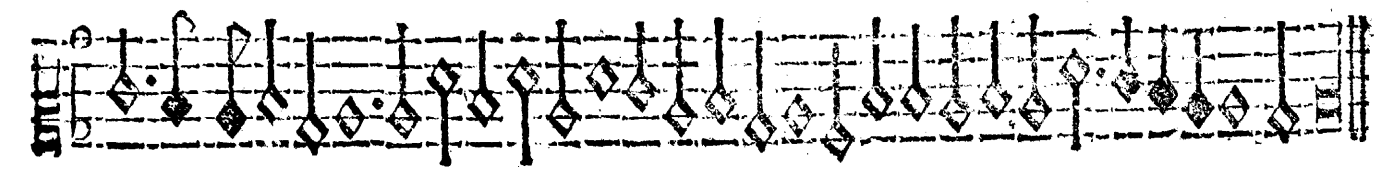
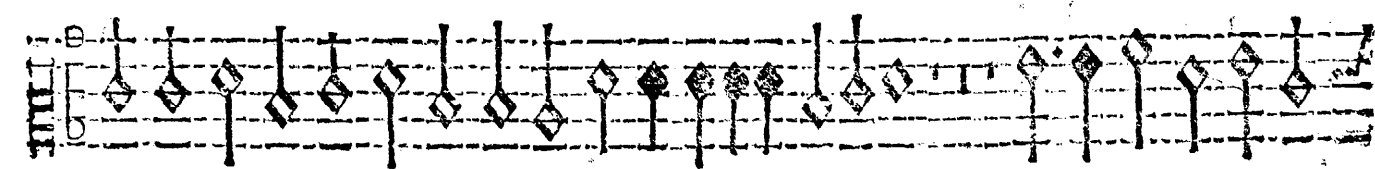
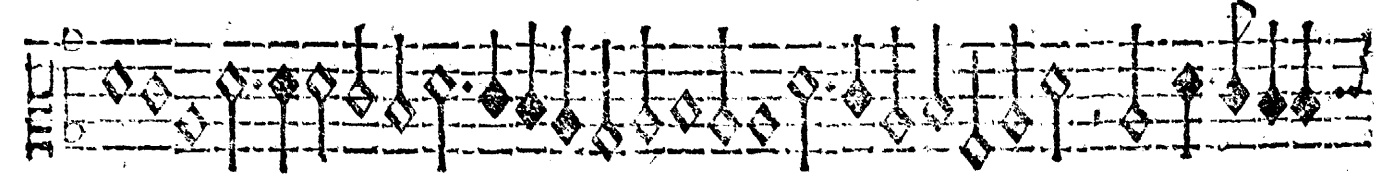
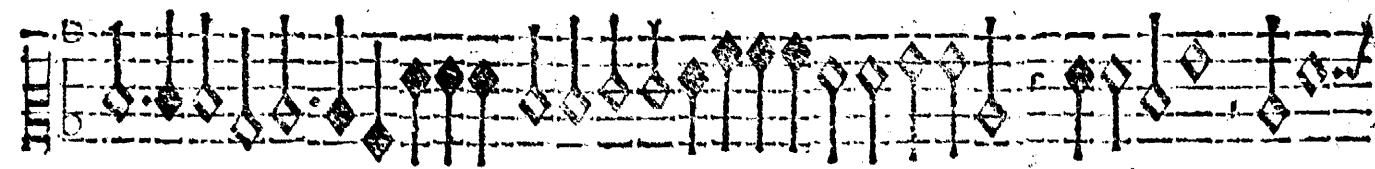
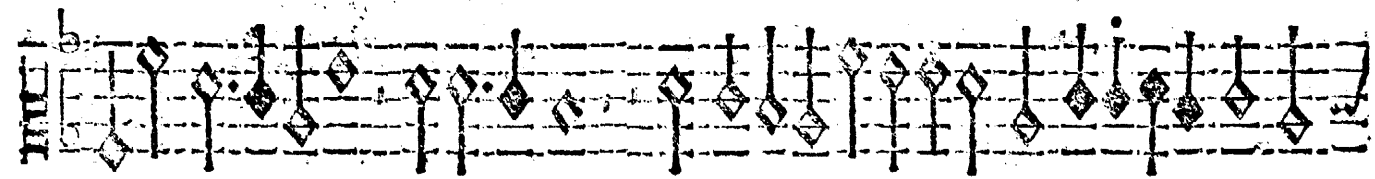
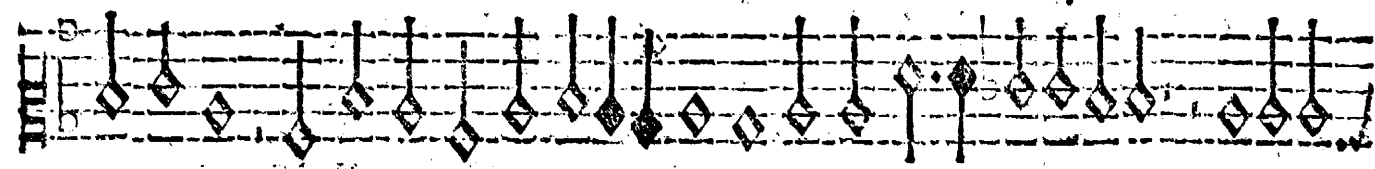
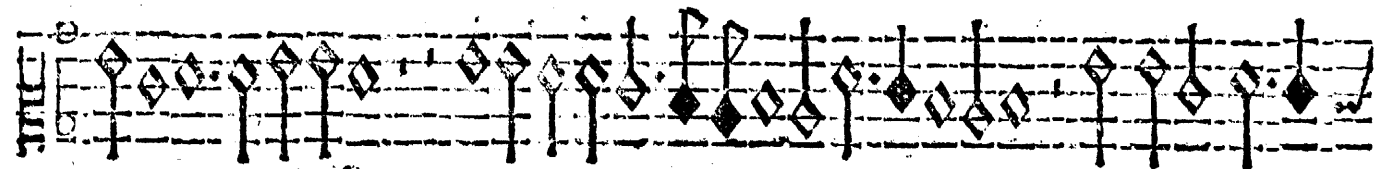
A Sei Voci.

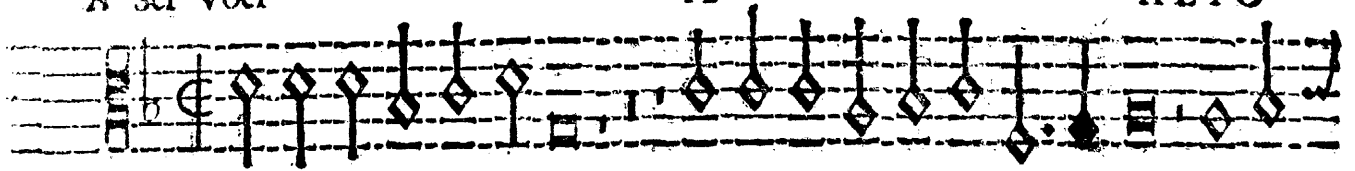
11

ALTO

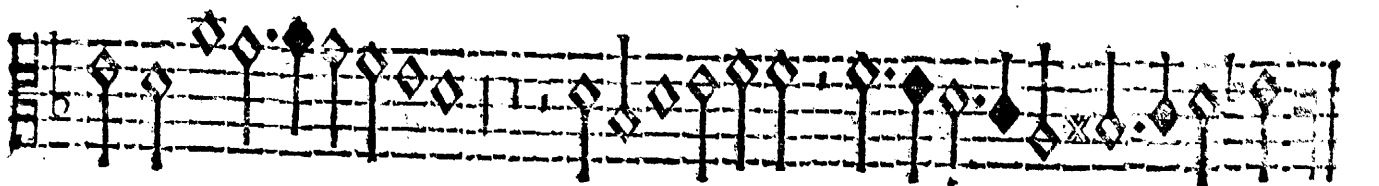
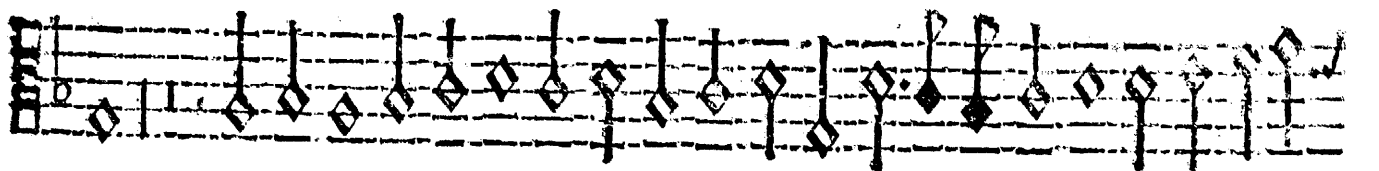
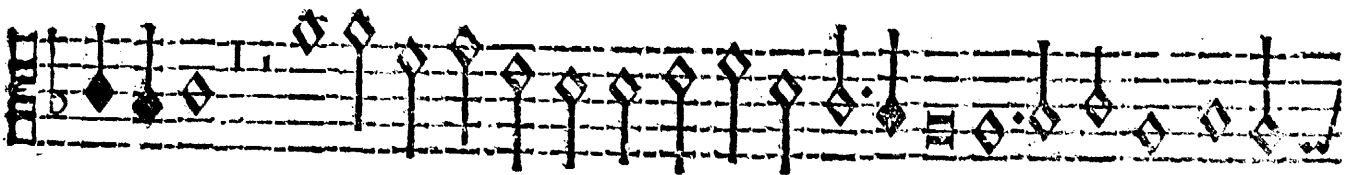
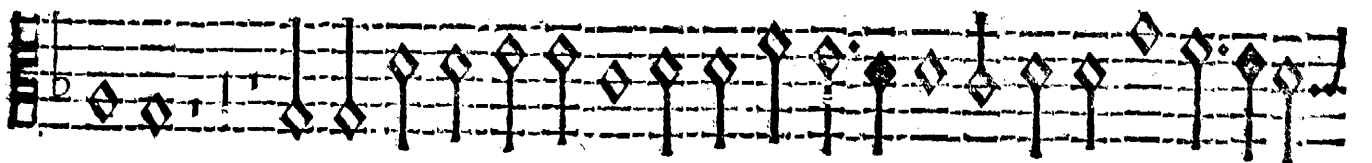
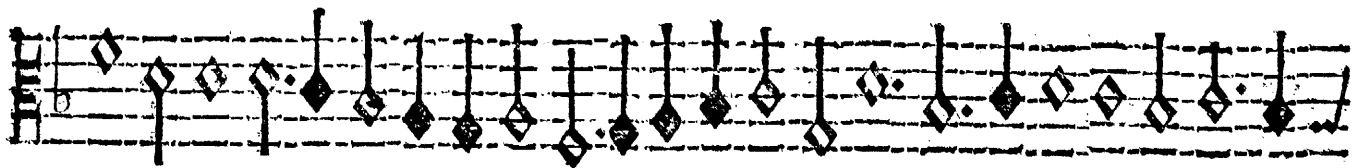
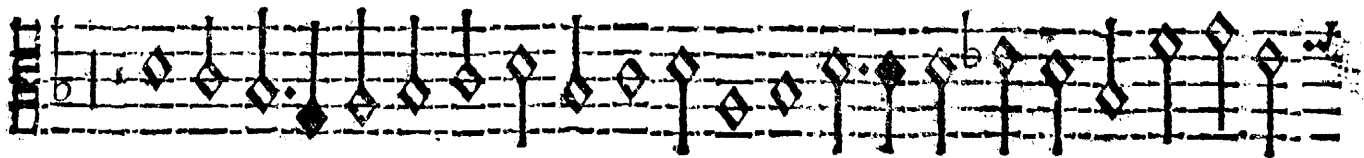
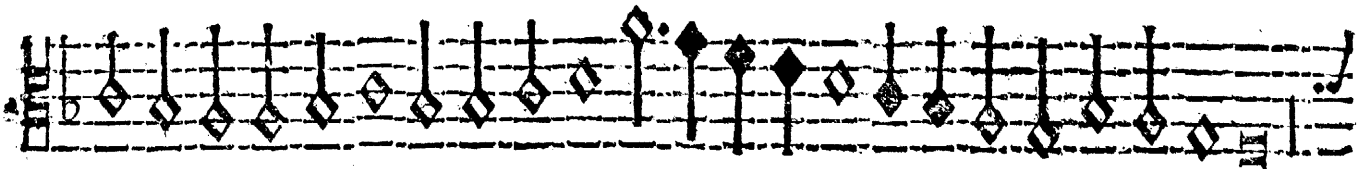
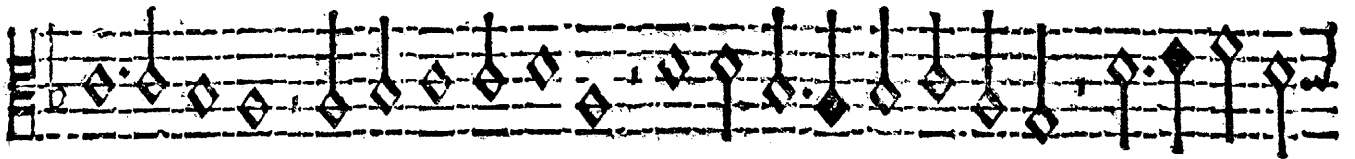


Sire





A la fontaine.



A Sei Voci.

33

ALTO

The first staff of music for the Alto voice part. It begins with a treble clef, a common time signature (C), and a key signature of one flat (B-flat). The staff contains a sequence of notes, primarily half notes, with some quarter notes and rests. The notes start on the first line (F4) and generally ascend and then descend. A first ending bracket is visible at the end of the staff.

La rose.

The second staff of music for the Alto voice part, continuing the melody. It features a mix of half and quarter notes with some rests. A first ending bracket is present at the end of the staff.

The third staff of music for the Alto voice part. It continues the melodic line with various note values and rests. A first ending bracket is at the end.

The fourth staff of music for the Alto voice part. The melody continues with similar note values and rests. A first ending bracket is at the end.

The fifth staff of music for the Alto voice part. It shows further development of the melodic line. A first ending bracket is at the end.

The sixth staff of music for the Alto voice part. The melody continues with a mix of note values. A first ending bracket is at the end.

The seventh staff of music for the Alto voice part. It continues the melodic development. A first ending bracket is at the end.

The eighth staff of music for the Alto voice part. The melody continues with various note values. A first ending bracket is at the end.

The ninth and final staff of music for the Alto voice part. It concludes the melodic phrase with a final cadence. A first ending bracket is at the end.

TAVOLA

L'oliva di Claudio da Coreggio à 4.	1
Torna Crequilon à 4	2
Giosefo Cuami à 4.	3
Giosefo ami à 4.	4
Las uoules à 5.	5
Onques Amor à 5.	6
Viuor ne puis à 5.	7
Io Visans à 5.	8
Content à 6.	9
Sine tenez à 6.	10
Sire à 6.	11
A la fontaine à 6.	12
La rose à 6.	13